

SPECIFICATIONS:

1. MOTOR INFORMATION

- MOTOR TYPE: VARIABLE SPEED AC
- FRAME SIZE: RDL1310Y
- RATING: 238 KW
- VOLTAG: 400
- ENCLOSURE: TOTALLY ENCLOSED IP54
- MOUNTING: FLANGE (350mm BOLT CIRCLE)
- COOLING: BLOWER COOLED IC416
- DRIVE METHOD: COUPLED OR BELTED
- ACCESSORIES: ENCODER & BRAKE

- 2. CONTINUOUS STALL TORQUE: 155 Nm
- MAX AT 155°C WINDING TEMPERATURE, IN A 40°C AMBIENT

- 3. OPERATING SPEED: 1500 BASE SPEED / 3000 RPM MAX.

- 4. 1024 SINUSOID/REV ENCODER, WITH MULTI-TURN ABSOLUTE POSITION DATA

- 5. FOR ADDITIONAL SPECIFICATIONS SEE 10000000368

- 6. SHAFT HEIGHT WILL NOT BE EXCEEDED SHIMS UP TO 0.5 MM IN THICKNESS USUALLY REQUIRED FOR COUPLED OR GEARED MACHINES.
- 7. SHAFT EXTENSIONS ARE ACCORDING TO DIN 748, TOLERANCES ARE BASED ON THE ISA FITTING SYSTEM USING K6 FOR DIAMETERS UP TO 50MM AND m6 FOR DIAMETERS ABOVE.

- 8. MAX SHAFT TIR .06 (0002)
- 9. MAX FACE TIR .13 (0005)

- 10. MOTOR WEIGHT 218 KG. (481 LBS) (MAY VARY 15%)
- 11. BRAKE: 400VAC 20 Nm MAX. HOLDING TORQUE, BRAKE RELEASES WHEN VOLTAGE APPLIED

BLOWER CONNECTION		SERIES		400 VOLTS	
LEAD					
11	L1				
12	L1				
13	L2				
14	L2				
15	L3				
16	L3				
17	L3				
18	L3				
19	L3				

PIN-OUT		ENCODER CONNECTOR	
PIN	FUNCTION		
A	SIN +		
B	SIN -		
C	COS +		
D	COS -		
E	DATA +		
F	DATA -		
G-M	-		
N	+9 VDC		
P	COM		
R	TS +		
S	TS -		
T-V	-		

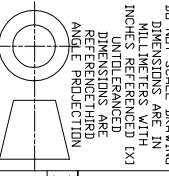
BRAKE CONNECTION		TERMINAL BOX	
LEAD	SOURCE	LEAD	SOURCE
BI	L1	U1	L1
BR	L2	V1	L2
		W1	L3
			GROUND

NOTE: ALL DRAWING MODIFICATIONS REQUIRE CUSTOMER APPROVAL

SUPPLIER PART NUMBER: L13M5E92

REFERENCES

VERSION/CHANGE NUMBER	TOLERANCES UNLESS OTHERWISE SPECIFIED
	DO NOT SCALE DRAWING DIMENSIONS ARE IN MILLIMETERS WITH INCH DIMENSIONS UNLESS OTHERWISE SPECIFIED
	DIMENSIONS ARE REFERENCED THIRD ANGLE PROJECTION



DESCRIPTION

HPK-E1310C-MC4AAA,ESM

CAD DOCUMENT

Allen-Bradley



DR. AMB DATE 09-19-06

SHEET 1 OF 1

DXF FILE AVAILABLE

10000000368