

**SPECIFICATIONS:**

**1. MOTOR INFORMATION**

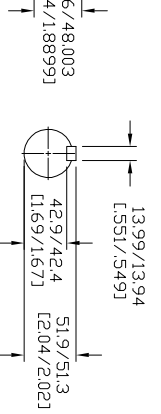
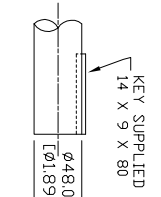
- MOTOR TYPE: VARIABLE SPEED AC
- FRAME SIZE: RDL1310Y
- RATING: 238 KW
- VOLTAG: 400
- ENCLOSURE: TOTALLY ENCLOSED IP54
- MOUNTING: FLANGE (350mm BOLT CIRCLE)
- COOLING: BLOWER COOLED IC416
- DRIVE METHOD: COUPLED OR BELTED
- ACCESSORIES: ENCODER & BRAKE
- 2. CONTINUOUS STALL TORQUE: 155 Nm
- MAX AT 155°C WINDING TEMPERATURE, IN A 40°C AMBIENT
- 3. OPERATING SPEED: 1500 BASE SPEED / 3000 RPM MAX.
- 4. 1024 SINUSOID/REV ENCODER, WITH SINGLE-TURN ABSOLUTE POSITION DATA
- 5. FOR ADDITIONAL SPECIFICATIONS SEE 10000000367
- 6. SHAFT HEIGHT WILL NOT BE EXCEEDED SHIMS UP TO 0.5 MM IN THICKNESS USUALLY REQUIRED FOR COUPLED OR GEARED MACHINES.
- 7. SHAFT EXTENSIONS ARE ACCORDING TO DIN 748, TOLERANCES ARE BASED ON THE ISA FITTING SYSTEM USING K6 FOR DIAMETERS UP TO 50MM AND m6 FOR DIAMETERS ABOVE.
- 8. MAX SHAFT TIR .06 [0.002]
- 9. MOTOR WEIGHT 218 KG. [481 LBS] (MAY VARY 15%)
- 10. BRAKE: 400VAC 20 Nm MAX. HOLDING TORQUE, BRAKE RELEASES WHEN VOLTAGE APPLIED

BLOWER CONNECTION	
LEAD	400 VOLTS
T1	L1
T2	L2
T3	L3
T4	L3
T5	L3
T6	L3
T7	L3
T8	L3
T9	L3

ENCODER CONNECTION	
PN	FUNCTION
A	SIN +
B	SIN -
C	CDS +
D	CDS -
E	DATA +
F	DATA -
G-M	-
N	+9 VDC
P	COM
R	TS +
S	TS -
T-V	-

MOTOR CONNECTION	
LEAD	TERMINAL BOX SOURCE
U1	L1
V1	L2
W1	L3
GREEN	GROUND

BRAKE CONNECTION	
LEAD	460 V 1 PHASE SOURCE
B1	L1
BR	L2



**REFERENCES**

VERSION/CHANGE NUMBER	TOLERANCES UNLESS OTHERWISE SPECIFIED
	DO NOT SCALE DRAWING DIMENSIONS ARE IN MILLIMETERS WITH UNDIMENSIONED DIMENSIONS ARE IN INCHES (DIMENSIONS ARE REFERENCE THIRD ANGLE PROJECTION)

NOTE: ALL DRAWING MODIFICATIONS REQUIRE CUSTOMER APPROVAL

SUPPLIER PART NUMBER: L13M5E82

**CAD DOCUMENT**

DESCRIPTION: HPK-E1310C-SC44AA,ESM

Allen-Bradley



DR. AMB	DATE 09-19-06	SHEET 1	OF 1
DXF FILE AVAILABLE		DWG SIZE B	10000000367