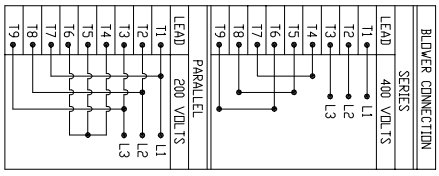


- SPECIFICATIONS:**
- MOTOR INFORMATION**  
MOTOR TYPE: VARIABLE SPEED AC  
FRAME SIZE: RDL1609Y  
RATING: 48.4 KW  
VOLTAGE: 400  
ENCLOSURE: TOTALLY ENCLOSED IP54  
MOUNTING: FLANGE (350mm BOLT CIRCLE)  
COOLING: BLOWER COOLED IC416  
DRIVE METHOD: COUPLED OR BELTED  
ACCESSORIES: ENCODER & BRAKE
  - CONTINUOUS STALL TORQUE: 156 Nm  
MAX AT 155°C WINDING TEMPERATURE, IN A 40°C AMBIENT
  - OPERATING SPEED: 3000 BASE SPEED / 5000 RPM MAX
  - 1024 SINUSOID/REV ENCODER, WITH MULTI-TURN ABSOLUTE POSITION DATA
  - FOR ADDITIONAL SPECIFICATIONS SEE 1000000380
  - SHAFT HEIGHT WILL NOT BE EXCEEDED  
SHIMS UP TO 0.5 MM IN THICKNESS USUALLY REQUIRED FOR COUPLED OR GEARED MACHINES.
  - SHAFT EXTENSIONS ARE ACCORDING TO DIN 748, TOLERANCES ARE BASED ON THE ISA FITTING SYSTEM USING H6 FOR DIAMETERS UP TO 50MM AND h6 FOR DIAMETERS ABOVE.
  - MAX SHAFT TIR .06 [0.002]  
MAX FACE TIR .13 [0.005]
  - MOTOR WEIGHT 240 KG. (530 LBS) (MAY VARY 15%)
  - BRAKE: 400VAC 20 Nm MAX. HOLDING TORQUE, BRAKE RELEASES WHEN VOLTAGE APPLIED



PIN-DUT	ENCODER CONNECTOR	FUNCTION
A	SIN +	
B	SIN -	
C	DDS +	
D	DDS -	
E	DATA +	
F	DATA -	
G-M		+9 VDC
N		CM
P		TS +
R		TS -
T-V		

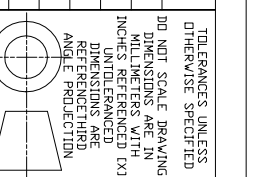
TERMINAL BOX	LEAD	SOURCE
U1	L1	
V1	L2	
W1	L3	
		GREEN GROUND

BRAKE CONNECTION	LEAD	SOURCE
B1	L1	
B2	L2	

**REFERENCES**

VERSION/CHANGE NUMBER	TOLERANCES UNLESS OTHERWISE SPECIFIED
	DO NOT SCALE DRAWING DIMENSIONS ARE IN MILLIMETERS WITH INCH DIMENSIONS ARE UNLESS OTHERWISE SPECIFIED



NOTE: ALL DRAWING MODIFICATIONS REQUIRE CUSTOMER APPROVAL

SUPPLIER PART NUMBER: L16MS299

DESCRIPTION	HPK-E1609E-MC4AAA,ESM	CAD DOCUMENT
DR.	AMB	DATE 09-19-06
DXF FILE AVAILABLE	SHEET 1 OF 1	DWG. DOCUMENT NUMBER 10000000400