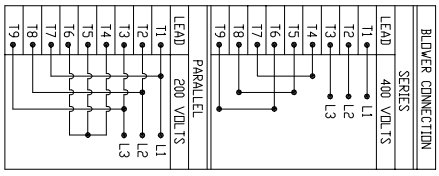


- SPECIFICATIONS:**
- MOTOR INFORMATION**  
MOTOR TYPE: VARIABLE SPEED AC  
FRAME SIZE: RDL1609Y  
RATING: 48.4 KW  
VOLTAGE: 400  
ENCLOSURE: TOTALLY ENCLOSED IP54  
MOUNTING: FLANGE (350mm BOLT CIRCLE)  
COOLING: BLOWER COOLED IC416  
DRIVE METHOD: COUPLED OR BELTED  
ACCESSORIES: ENCODER & BRAKE
  - CONTINUOUS STALL TORQUE: 156 Nm  
MAX AT 155°C WINDING TEMPERATURE, IN A 40°C AMBIENT
  - OPERATING SPEED: 3000 BASE SPEED / 5000 RPM MAX.
  - 1024 SINUSOID/REV ENCODER, WITH SINGLE-TURN ABSOLUTE POSITION DATA
  - FOR ADDITIONAL SPECIFICATIONS SEE 1000000379
  - SHAFT HEIGHT WILL NOT BE EXCEEDED SHIMS UP TO 0.5 MM IN THICKNESS USUALLY REQUIRED FOR COUPLED OR GEARED MACHINES.
  - SHAFT EXTENSIONS ARE ACCORDING TO DIN 748, TOLERANCES ARE BASED ON THE ISA FITTING SYSTEM USING H6 FOR DIAMETERS UP TO 50MM AND h6 FOR DIAMETERS ABOVE.
  - MAX SHAFT TIR .06 L002J  
MAX FACE TIR .13 L005J
  - MOTOR WEIGHT 240 KG. (530 LBS) (MAY VARY 15%)
  - BRAKE: 400VAC 20 Nm MAX. HOLDING TORQUE, BRAKE RELEASES WHEN VOLTAGE APPLIED



BLOWER CONNECTION	ENCODER CONNECTOR
LEAD	400 VOLTS
T1	L1
T2	L2
T3	L3
T4	COM
T5	TS +
T6	TS -
T7	TS -
T8	TS -
T9	TS -

PIN-OUT	ENCODER CONNECTOR	MOTOR CONNECTION
PIN	FUNCTION	TERMINAL BOX
A	SIN +	LEAD U1
B	SIN -	LEAD U2
C	COM	LEAD V1
D	COM +	LEAD V2
E	DATA +	LEAD V3
F	DATA -	LEAD V4
G	DATA -	LEAD V5
H	DATA -	LEAD V6
I	DATA -	LEAD V7
J	DATA -	LEAD V8
K	DATA -	LEAD V9
L	DATA -	LEAD V10
M	DATA -	LEAD V11
N	DATA -	LEAD V12
O	DATA -	LEAD V13
P	COM	LEAD V14
Q	TS +	LEAD V15
R	TS -	LEAD V16
S	TS -	LEAD V17
T	TS -	LEAD V18
U	TS -	LEAD V19
V	TS -	LEAD V20



REFERENCES	DESCRIPTION	CAD DOCUMENT
VERSION/ CHANGE NUMBER	HPK-E1609E-SC44AA,ESM	
TOLERANCES UNLESS OTHERWISE SPECIFIED		
DO NOT SCALE DRAWING DIMENSIONS ARE IN MILLIMETERS WITH INCH DIMENSIONS IN PARENTHESES UNLESS OTHERWISE SPECIFIED		
DIMENSIONS ARE REFERENCE THIRD ANGLE PROJECTION		
DR. AMB	DATE 09-19-06	SHEET 1 OF 1
DXF FILE AVAILABLE		DWG. DOCUMENT NUMBER 10000000379

**Rockwell Automation**

Allen-Bradley

CAD DOCUMENT

SUPPLIER PART NUMBER: L16MS289