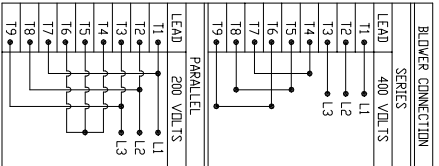


- SPECIFICATIONS:**
- MOTOR INFORMATION**  
MOTOR TYPE: VARIABLE SPEED AC  
FRAME SIZE: RDL1611Y  
RATING: 57 KW  
VOLTAGE: 400  
ENCLOSURE: TOTALLY ENCLOSED IP54  
MOUNTING: FLANGE (350mm BOLT CIRCLE)  
COOLING: BLOWER COOLED IC416  
DRIVE METHOD: COUPLED OR BELTED  
ACCESSORIES: ENCODER & BRAKE
  - CONTINUOUS STALL TORQUE: 183 Nm  
MAX AT 155°C WINDING TEMPERATURE, IN A 40°C AMBIENT
  - OPERATING SPEED: 3000 BASE SPEED / 5000 RPM MAX.
  - 1024 SINUSOID/REV ENCODER, WITH SINGLE-TURN ABSOLUTE POSITION DATA
  - FOR ADDITIONAL SPECIFICATIONS SEE 1000000381
  - SHAFT HEIGHT WILL NOT BE EXCEEDED SHIMS UP TO 0.5 MM IN THICKNESS USUALLY REQUIRED FOR COUPLED OR GEARED MACHINES.
  - SHAFT FITTINGS ARE ACCORDING TO DIN 748, TOLERANCES ARE BASED ON THE ISA EXTENSION SYSTEM USING K6 FOR DIAMETERS UP TO 50MM AND M6 FOR DIAMETERS ABOVE.
  - MAX SHAFT TIR .06 (0.002)
  - MAX FACE TIR .13 (0.005)
  - MOTOR WEIGHT 270 KG. (595 LBS) (MAY VARY 15%)
  - BRAKE: 400VAC 20 Nm MAX. HOLDING TORQUE, BRAKE RELEASES WHEN VOLTAGE APPLIED



| BLOWER CONNECTION |           | SERIES |           | PARALLEL |           |
|-------------------|-----------|--------|-----------|----------|-----------|
| LEAD              | 400 VOLTS | LEAD   | 200 VOLTS | LEAD     | 200 VOLTS |
| T1                | L1        | T1     | L1        | T1       | L1        |
| T2                | L2        | T2     | L2        | T2       | L2        |
| T3                | L3        | T3     | L3        | T3       | L3        |
| T4                | L3        | T4     | L3        | T4       | L3        |
| T5                | L3        | T5     | L3        | T5       | L3        |
| T6                | L3        | T6     | L3        | T6       | L3        |
| T7                | L3        | T7     | L3        | T7       | L3        |
| T8                | L3        | T8     | L3        | T8       | L3        |
| T9                | L3        | T9     | L3        | T9       | L3        |

| PIN-OUT ENCODER CONNECTOR |          | MOTOR CONNECTION TERMINAL BOX |        |
|---------------------------|----------|-------------------------------|--------|
| PIN                       | FUNCTION | LEAD                          | SOURCE |
| A                         | SIN +    | U1                            | L1     |
| B                         | SIN -    | V1                            | L2     |
| C                         | COS +    | W1                            | L3     |
| D                         | COS -    | GREEN                         | GROUND |
| E                         | DATA +   |                               |        |
| F                         | DATA -   |                               |        |
| G-M                       | -        |                               |        |
| N                         | +9 VDC   |                               |        |
| P                         | CDM      |                               |        |
| R                         | TS +     |                               |        |
| S                         | TS -     |                               |        |
| T-V                       | -        |                               |        |

| BRAKE CONNECTION |        |
|------------------|--------|
| LEAD             | SOURCE |
| B1               | L1     |
| B2               | L2     |

| REFERENCES            |   |
|-----------------------|---|
| VERSION/CHANGE NUMBER | TOLERANCES UNLESS OTHERWISE SPECIFIED   |
|                       | DO NOT SCALE DRAWING DIMENSIONS WITH INCH DIMENSIONS ARE IN MILLIMETERS WITH UNDIMENSIONED DIMENSIONS ARE IN INCHES |
|                       | ANGLE PROJECTION  |

DESCRIPTION: HPK-E1611E-SC44AA,ESM

NOTE: ALL DRAWING MODIFICATIONS REQUIRE CUSTOMER APPROVAL

SUPPLIER PART NUMBER: L16MS310

CAD DOCUMENT

Rockwell Automation

Allen-Bradley

DR. AMB DATE 09-19-06 SHEET 1 OF 1

DXF FILE AVAILABLE

DWG. DOCUMENT NUMBER 10000000401