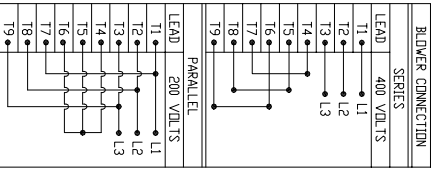


SPECIFICATIONS:

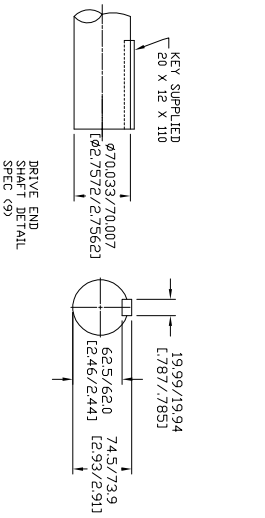
1. MOTOR INFORMATION

- MOTOR TYPE: VARIABLE SPEED AC
- FRAME SIZE: DL1815
- RATING: 55.9 KW
- VOLTAGE: 400
- ENCLOSURE: TOTALLY ENCLOSED IP54
- MOUNTING: F001
- COOLING: BLOWER COOLED IC416
- DRIVE METHOD: COUPLED OR BELTED
- ACCESSORIES: ENCODER & BRAKE
- 2. CONTINUOUS STALL TORQUE: 360 Nm  
MAX AT 155°C WINDING TEMPERATURE, IN A 40°C AMBIENT
- 3. OPERATING SPEED: 1500 BASE SPEED / 3000 RPM MAX.
- 4. 1024 SINUSOID/REV ENCODER, WITH MULTI-TURN ABSOLUTE POSITION DATA
- 5. FOR ADDITIONAL SPECIFICATIONS SEE 1000000332
- 6. SHAFT HEIGHT WILL NOT BE EXCEEDED SHIMS UP TO 0.5 MM IN THICKNESS USUALLY REQUIRED FOR COUPLED OR GEARED MACHINES.
- 7. SHAFT EXTENSIONS ARE ACCORDING TO DIN 748, TOLERANCES ARE BASED ON FDR DIAMETERS ABOVE.
- 8. MAX SHAFT TIR .06 L00521
- 9. MOTOR WEIGHT 497 KG. I096 LB53 (MAY VARY 15%)
- 10. BRAKE: 400VAC 48 Nm MAX. HOLDING TORQUE, BRAKE RELEASES WHEN VOLTAGE APPLIED



BLOWER CONNECTION	SERIES	ENCODER CONNECTOR PIN	FUNCTION
T1	L1	A	SIN +
T2	L2	B	SIN -
T3	L3	C	CDS +
T4	L3	D	CDS -
T5	L3	E	DATA +
T6	L3	F	DATA -
T7	L3	G-M	-
T8	L3	N	+9 VDC
T9	L3	P	COM
PARALLEL		R	TS +
200 VOLTS		S	TS -
		T-V	-

MOTOR CONNECTION	TERMINAL BOX LEAD	SOURCE
A	L1	L1
B	L1	L2
C	L2	L3
D	L2	W1
E	L2	W1
F	L2	L3
G-M	L2	L3
N	L2	W1
P	L2	W1
R	L2	W1
S	L2	W1
T-V	L2	W1



NOTE: ALL DRAWING MODIFICATIONS REQUIRE CUSTOMER APPROVAL

SUPPLIER PART NUMBER: L18MS273

REFERENCES		DESCRIPTION		CAD DOCUMENT	
VERSION/CHANGE NUMBER	TOLERANCES UNLESS OTHERWISE SPECIFIED	HPK-E1815C-MB44BA.ESM		Allen-Bradley	
DO NOT SCALE DRAWING DIMENSIONS ARE IN INCHES REFERENCED UNLESS OTHERWISE INDICATED	UNLESS OTHERWISE SPECIFIED	DATE 09-19-06		SHEET 1 OF 1	
UNLESS OTHERWISE SPECIFIED	ANGLE PRODUCTION	DXF FILE AVAILABLE		10000000332	
Rockwell Automation		Allen-Bradley		A/B	