

**SPECIFICATIONS:**

**1. MOTOR INFORMATION**

MOTOR TYPE: VARIABLE SPEED AC

FRAME SIZE: D1.1815

RATING: 55.9 KW

VOLTAGE: 400

ENCLOSURE: TOTALLY ENCLOSED IP54

MOUNTING: FOOT

COOLING: BLOWER COOLED IC416

DRIVE METHOD: COUPLED OR BELTED

ACCESSORIES: ENCODER & BRAKE

2. CONTINUOUS STALL TORQUE: 360 Nm

MAX AT 155°C WINDING TEMPERATURE, IN A 40°C AMBIENT

3. OPERATING SPEED: 1500 BASE SPEED / 3000 RPM MAX

4. 1024 SINUSOID/REV ENCODER, WITH MULTI-TURN ABSOLUTE POSITION DATA

5. FOR ADDITIONAL SPECIFICATIONS SEE 1000000372

6. SHAFT HEIGHT WILL NOT BE EXCEEDED SHIMS UP TO 0.5 MM IN THICKNESS USUALLY REQUIRED FOR COUPLED OR GEARED MACHINES.

7. SHAFT EXTENSIONS ARE ACCORDING TO DIN 748, TOLERANCES ARE BASED ON IFR DIAMETERS ABOVE.

8. MAX SHAFT TIR .06 I.002J

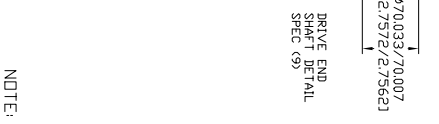
9. MOTOR WEIGHT 497 KG. I.096 LB53 (MAY VARY 15%)

10. BRAKE: 400VAC 48 Nm MAX. HOLDING TORQUE, BRAKE RELEASES WHEN VOLTAGE APPLIED

BLOWER CONNECTION	
LEAD	400 VOLTS
T1	L1
T2	L2
T3	L3
T4	L3
T5	L3
T6	L3
T7	L3
T8	L3
T9	L3

PIN-OUT ENCODER CONNECTOR	
PIN	FUNCTION
A	SIN +
B	SIN -
C	CDS +
D	CDS -
E	DATA +
F	DATA -
G-M	-
N	+9 VDC
P	CDM
R	TS +
S	TS -
T-V	-

MOTOR CONNECTION TERMINAL BOX	
LEAD	SOURCE
U1	L1
V1	L2
W1	L3
GREEN	GROUND



NOTE: ALL DRAWING MODIFICATIONS REQUIRE CUSTOMER APPROVAL

SUPPLIER PART NUMBER: L18W5294

REFERENCES		DESCRIPTION	CAD DOCUMENT
VERSION/ CHANGE NUMBER	TOLERANCES UNLESS OTHERWISE SPECIFIED		
	DO NOT SCALE DRAWING DIMENSIONS ARE IN INCHES REFERENCED TO UNITS REFERENCED IN REPRESENTATION ANGLE PROJECTION		
DR.	AMB	DATE 09-19-06	SHEET 1 OF 1
DXF FILE AVAILABLE			
DWG SIZE	DECUMENT NUMBER	10000000392	