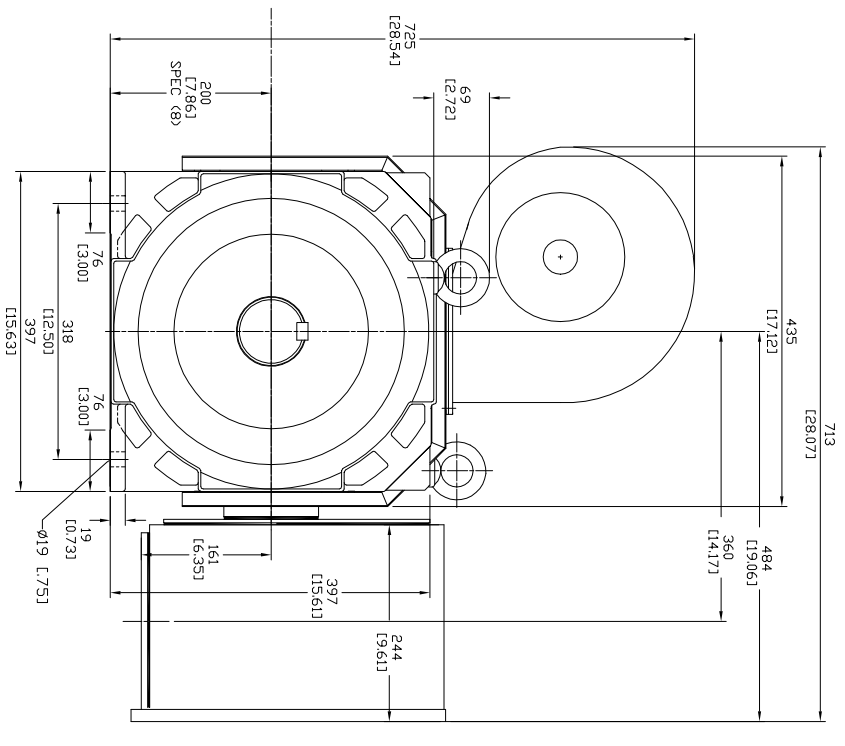


1. MOTOR INFORMATION

- MOTOR TYPE: VARIABLE SPEED AC
 FRAME SIZE: DL 2010
 RATING: 75 KW
 VOLTAGE: 400
 ENCLDURE: TOTALLY ENCLOSED IP54
 MOUNTING: FOOT
 COOLING: BLOWER COOLED IC416
 DRIVE METHOD: COUPLED OR BELTED
 ACCESSORIES: ENCODER & BRAKE
2. CONTINUOUS STALL TORQUE: 482 Nm
 MAX AT 155°C WINDING TEMPERATURE, IN A 40°C AMBIENT
3. OPERATING SPEED: 1500 BASE SPEED / 3000 RPM MAX
4. 1024 SINUSOID/REV ENCODER, WITH SINGLE-TURN ABSOLUTE POSITION DATA
5. FOR ADDITIONAL SPECIFICATIONS SEE 1000000373
6. SHAFT HEIGHT WILL NOT BE EXCEEDED SHIMS UP TO 0.5 MM IN THICKNESS USUALLY REQUIRED FOR COUPLED OR GEARED MACHINES.
7. SHAFT EXTENSIONS ARE ACCORDING TO DIN 748, TOLERANCES ARE BASED ON THE ISA FITTING SYSTEM USING K6 FOR DIAMETERS UP TO 50MM AND M6 FOR DIAMETERS ABOVE.
8. MAX SHAFT TIR .06 L002J
 MAX FACE TIR .13 L005J
9. MOTOR WEIGHT 565 KG, 1246 LBST (MAY VARY 15%)
10. BRAKE: 400VAC 48 Nm MAX. HOLDING TORQUE, BRAKE RELEASES WHEN VOLTAGE APPLIED

BLOWER CONNECTION		ENCODER CONNECTION		MOTOR CONNECTION	
LEAD	SERIES	PIN	FUNCTION	LEAD	TERMINAL BOX SOURCE
T1	L1	A	SIN +	U1	L1
T2	L2	B	SIN -	V1	L2
T3	L3	C	COS +	W1	L3
T4		D	COS -		GROUND
T5		E	DATA +		
T6		F	DATA -		
T7		G-M	-		
T8		N	+9 VDC		
T9		P	COM		
	PARALLEL	R	TS +		
	200 VOLTS	S	TS -		
		T-V	-		



NOTE: ALL DRAWING MODIFICATIONS REQUIRE CUSTOMER APPROVAL

SUPPLIER PART NUMBER: L20W5285

DRIVE END
 SHAFT DETAIL
 SPEC (9)

REFERENCES	DESCRIPTION	CAD DOCUMENT
VERSION/ CHANGE NUMBER	TOLERANCES UNLESS OTHERWISE SPECIFIED	HPK-E2010C-SC44BA.ESM
	DO NOT SCALE DRAWING DIMENSIONS ARE IN INCHES REFERENCED TO UNITS UNLESS OTHERWISE SPECIFIED	Allen-Bradley
	ANGLE PRODUCTION	AB
DR	AMB	DATE 09-19-06
		SHEET 1
		OF 1
		DWG NUMBER 1000000393
		SIZE B

DXF FILE AVAILABLE