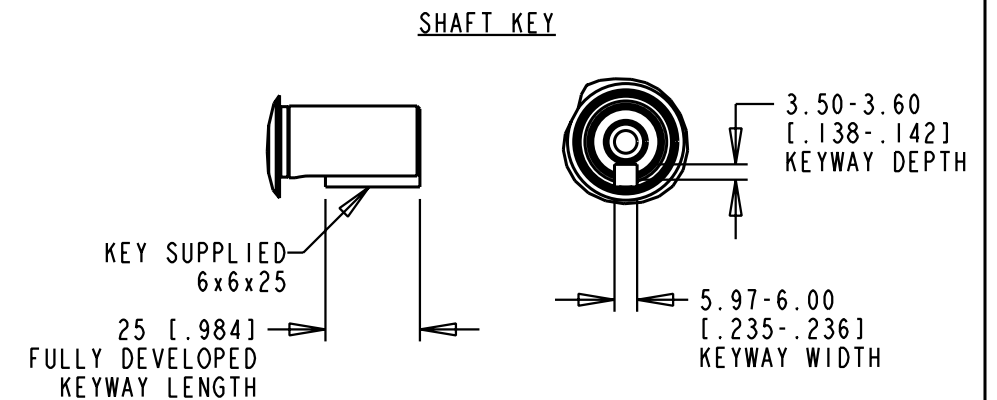
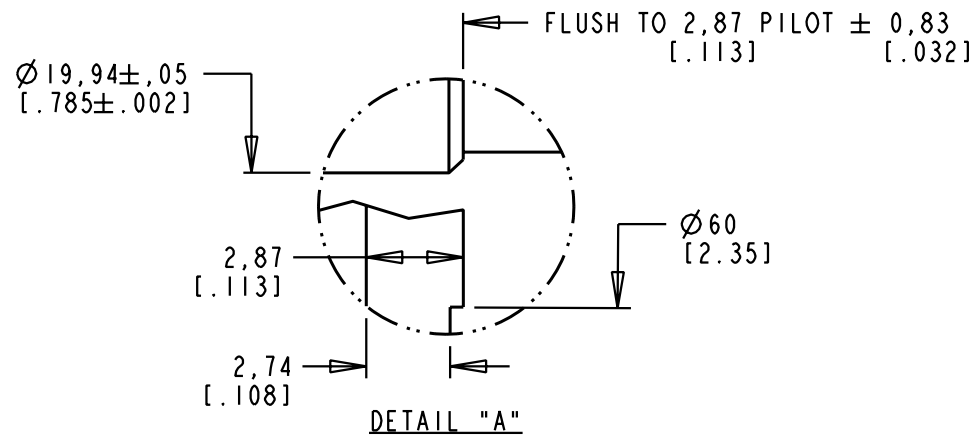


MODEL	L1	L2	L3
430	224 [8.81]	158 [6.22]	198 [7.80]

PIN-OUT POWER CONNECTOR		PIN-OUT ENCODER CONNECTOR	
PIN	FUNCTION	PIN	FUNCTION
A	U	1	SIN +
B	V	2	SIN -
C	W	3	COS +
D	GND	4	COS -
E	-	5	DATA +
F	MBRK+	6	DATA -
G	MBRK-	7-8	-
H	-	9-10	-
L	-	11	EPWR 9V
		12	ECOM
		13	TS +
		14	TS -
		15-17	-



NOTE:

- MODEL SHOWN IS MPF-x430x-xJ74BA.
- 3D STEP (.stp) FILES AVAILABLE AT ALL LENGTHS.
- COVERS SINGLE AND MULTI-TURN ABSOLUTE ENCODER 460V MODELS (i.e., MPF-B4xxx-MJ74BA and MPF-B4xxx-SJ74BA).

REFERENCES		DESCRIPTION	CAD DOCUMENT	
VERSION/ CHANGE NUMBER	UNLESS OTHERWISE SPECIFIED DO NOT SCALE DRAWING DIMENSIONS ARE IN MILLIMETERS WITH INCHES REFERENCED (X) UNTOLERANCED DIMENSIONS ARE REFERENCE 3RD ANGLE PROJECTION	MPF-B4xxx-xJ74BA, ESM	Allen-Bradley	
00	10005711	DR. D. HECKSEL	DATE 05/27/08	SHEET 1 OF 1
		DXF 2D OR STEP 3D FILE AVAILABLE		DWG. SIZE DOCUMENT NUMBER B 10000020831

Rockwell Automation

