

EYE-BOLT TAPPED HOLES ALSO ON OPPOSITE SIDE OF MOTOR

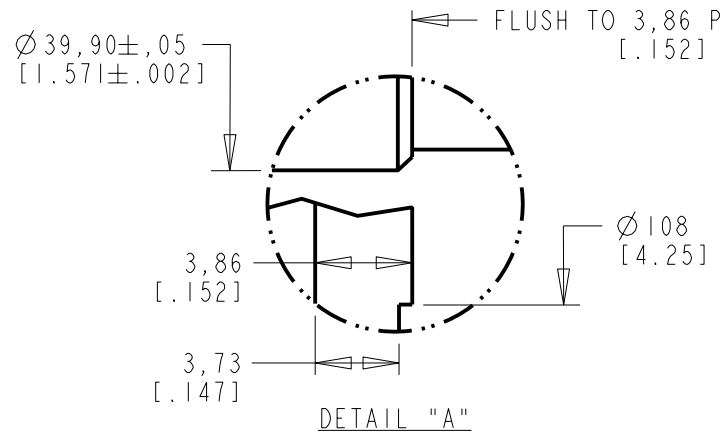
CONNECTOR HOUSINGS MAY BE ROTATED FOR REARWARD CONNECTOR ORIENTATION

KEY SUPPLIED 10 X 8 X 59
 M12 X 1,75-6H X 28 MIN DP
 SEE DETAIL "A" ENCODER CONNECTOR INTERCONTEC AEDC 113 NN00 00 0202 000
 OPTIONAL SHAFT SEAL Ø40 X Ø90 X 8

POWER CONNECTOR INTERCONTEC CEDE 271 NN00 00 0051 000

MODEL	LB	LD	LE
MPL-x640	223,8 [8.81]	183,6 [7.23]	112,5 [4.43]
MPL-x660	274,6 [10.81]	234,4 [9.23]	163,3 [6.43]
MPL-x680	325,4 [12.81]	285,2 [11.23]	214,1 [8.43]
MPM-x2152	274,6 [10.81]	234,4 [9.23]	163,3 [6.43]
MPM-x2153	325,4 [12.81]	285,2 [11.23]	214,1 [8.43]
MPM-x2154	376,2 [14.81]	336 [13.23]	264,9 [10.43]

PIN-OUT		ENCODER CONNECTOR	
PIN	FUNCTION	PIN	FUNCTION
U	U	1	SIN +
V	V	2	SIN -
W	W	3	COS +
⊕	GND	4	COS -
+	-	5	DATA +
-	-	6	DATA -
1	-	7-8	-
2	-	9-10	-
		11	EPWR 9V
		12	ECOM
		13	TS +
		14	TS -
		15-17	-



- NOTE:
- DXF FILE OF THIS DRAWING MUST BE SCALED TO LENGTH, SEE CHART ABOVE. MODEL SHOWN IS MPL-B680x-xJ72AA.
 - 3D STEP (.stp) FILES AVAILABLE AT ALL LENGTHS.
 - THIS DRAWING COVERS SINGLE AND MULTI-TURN ABSOLUTE ENCODER MODELS (i.e. MPx-xxxxx-MJ72AA and MPx-xxxxx-SJ72AA)

REFERENCES		DESCRIPTION	CAD DOCUMENT	
VERSION	UNLESS OTHERWISE SPECIFIED	ESM, MPL-x6xxx-xJ72AA; MPM-x215xx-xJ72AA	Allen-Bradley 	
01	DO NOT SCALE DRAWING DIMENSIONS ARE IN MILLIMETERS WITH INCHES REFERENCED [X] UNTOLERANCED DIMENSIONS ARE REFERENCE 3RD ANGLE PROJECTION			
		DR. EQ	DATE 1-9-09	SHEET 1 OF 1
		DXF 2D OR STEP 3D FILE AVAILABLE		DWG. SIZE B
				DOCUMENT NUMBER 10000042292