

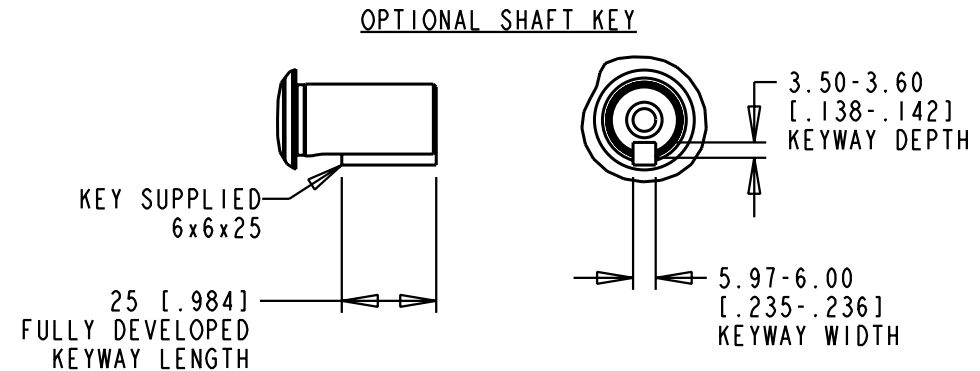
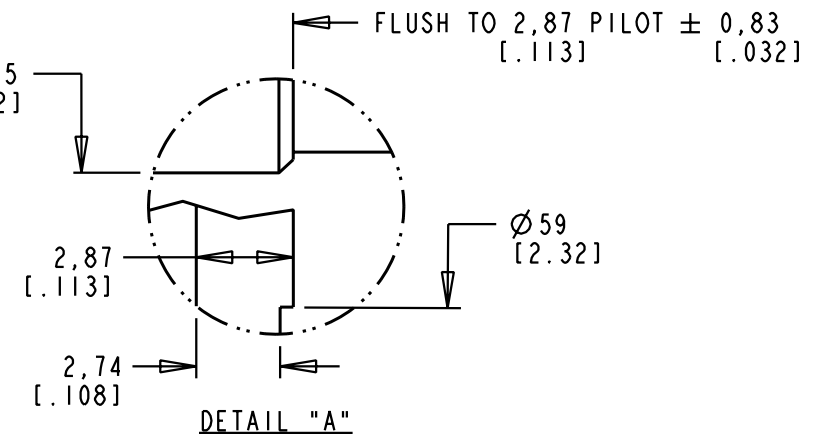
MODEL	L1	L2	L3
420	150 [5.90]	84 [3.31]	124 [4.89]
430	175 [6.90]	110 [4.31]	150 [5.89]

PIN-OUT	
PIN	FUNCTION
A	U
B	V
C	W
D	GND
E-H	-
L	-

PIN-OUT	
PIN	FUNCTION
1	SIN +
2	SIN -
3	COS +
4	COS -
5	DATA +
6	DATA -
7-8	-
9	EPWR 5V
10	ECOM
11-12	-
13	TS +
14	TS -
15-17	-

- NOTE:
- DXF OF THIS DRAWING MUST BE SCALED TO LENGTH ON CHART (420). MODEL SHOWN IS MPL-A430x-xx72AA.
  - 3D STEP (.stp) FILES AVAILABLE AT ALL LENGTHS.
  - COVERS SINGLE AND MULTI-TURN ABSOLUTE ENCODER 230V MODELS (i.e., MPL-A4xxx-Mx72AA and MPL-A4xxx-Sx72AA).

CONNECTOR HOUSING MAY BE ROTATED FOR REARWARD CONNECTOR ORIENTATION.



REFERENCES		DESCRIPTION	CAD DOCUMENT	
VERSION/ CHANGE NUMBER	UNLESS OTHERWISE SPECIFIED DO NOT SCALE DRAWING DIMENSIONS ARE IN MILLIMETERS WITH INCHES REFERENCED [X] UNTOLERANCED DIMENSIONS ARE REFERENCE 3RD ANGLE PROJECTION	MPL-A4xxx-xx72AA, ESM	<b>Allen-Bradley</b> 	
00	10005711			
		DR. D. HECKSEL	DATE 05/23/08	SHEET 1 OF 1
		DXF 2D OR STEP 3D FILE AVAILABLE	DWG. SIZE <b>B</b>	DOCUMENT NUMBER 10000020739