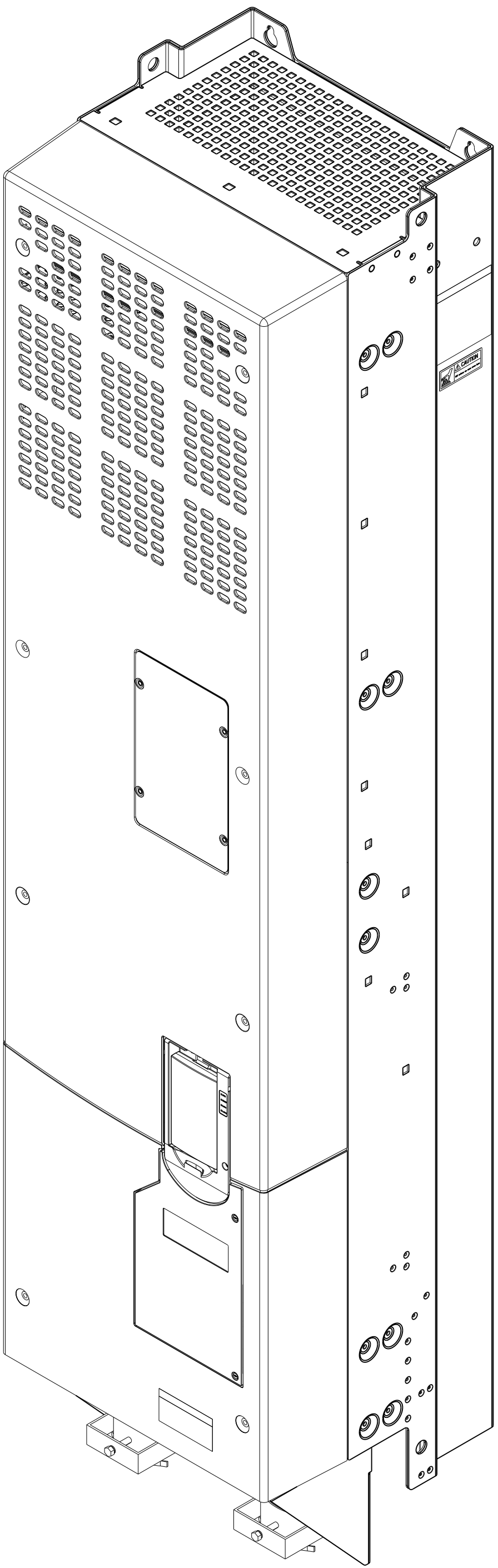


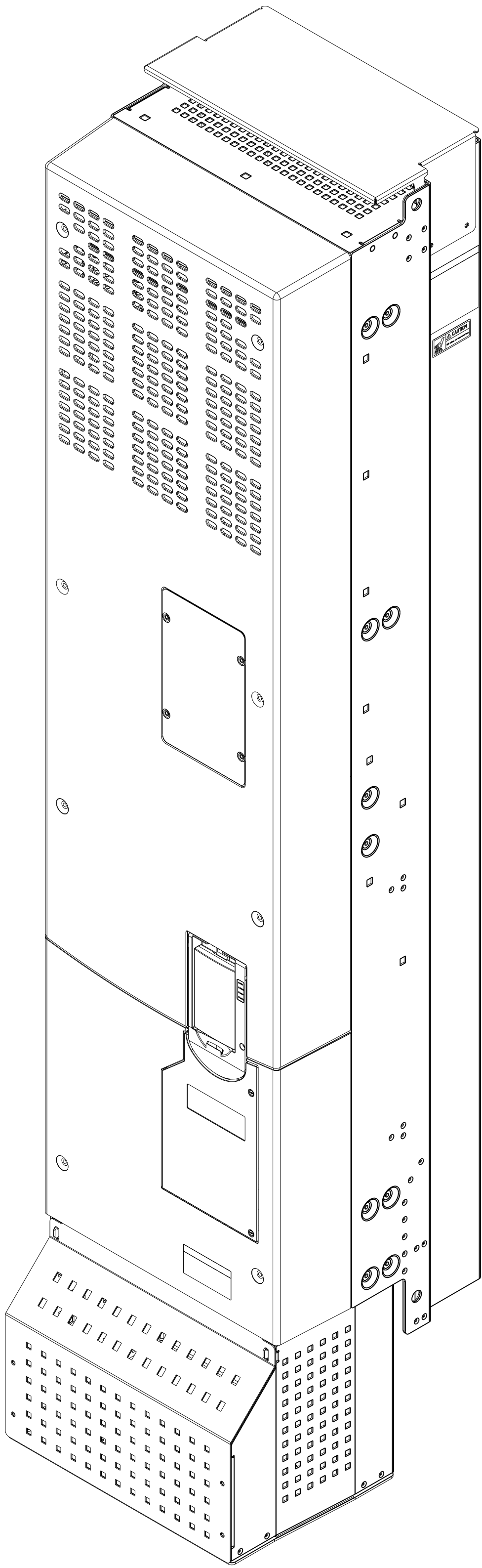
UL OPEN TYPE /  
IP00

ESTIMATED WEIGHT MAX:  
150 KG (330 LBS)



UL OPEN TYPE /  
IP00 WITH GROUNDING  
PLATE

ESTIMATED WEIGHT MAX:  
155 KG (341 LBS)



UL TYPE 1 /  
IP20

ESTIMATED WEIGHT MAX:  
160 KG (352 LBS)

ALL UNDIMENSIONED GEOMETRIES ARE CONTROLLED BY THE CAD MODEL. IN CASE OF DIMENSION DISCREPANCY, CAD MODEL OVERRIDES.		<b>Rockwell Automation</b>		CONFIDENTIAL AND PROPRIETARY INFORMATION. THIS DOCUMENT CONTAINS CONFIDENTIAL AND PROPRIETARY INFORMATION OF ROCKWELL AUTOMATION, INC. AND MAY NOT BE USED, COPIED OR DISCLOSED TO OTHERS, EXCEPT WITH THE AUTHORIZED WRITTEN PERMISSION OF ROCKWELL AUTOMATION, INC.	
THIRD ANGLE PROJECTION 		DESCRIPTION <b>PF755T,AFE6,INSTALLATION SPECIFICATION</b>		DATE: 2018-10-24	SHEET 1 OF 4
CREATED BY: SMARCIN		CHANGED BY: SMARCIN		SIZE: D1R <b>D</b>	VER: 01

UL OPEN TYPE / IP00

A

B

C

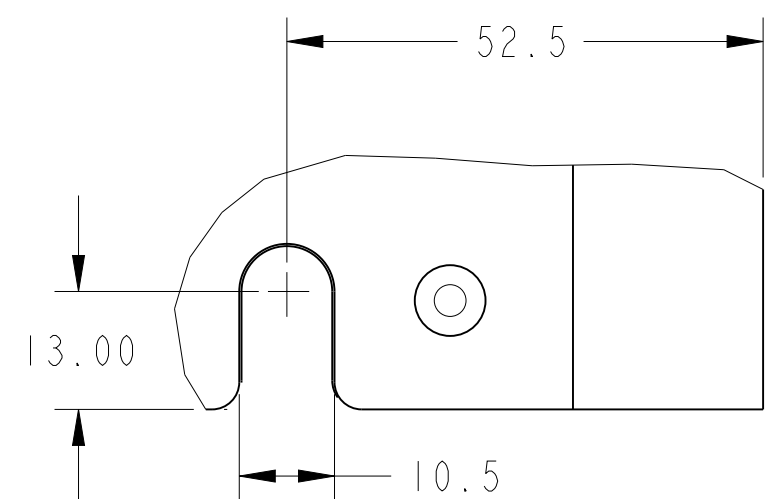
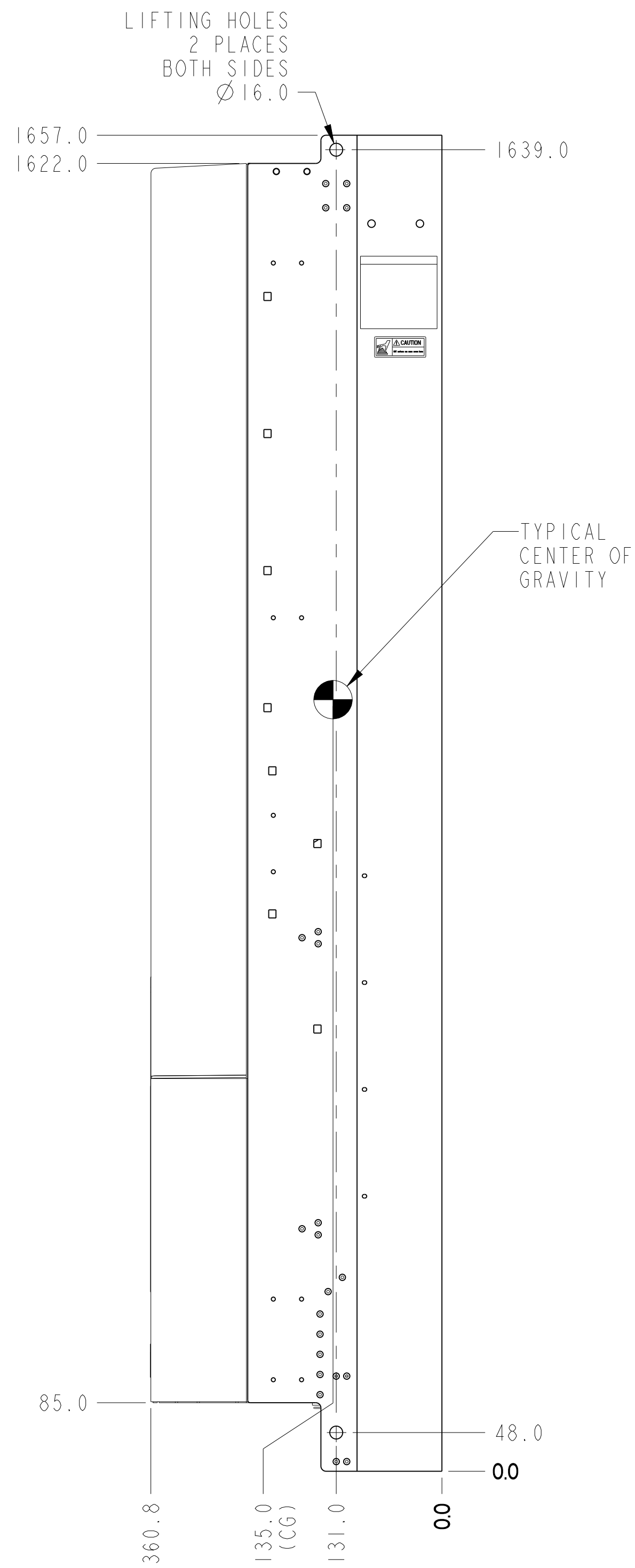
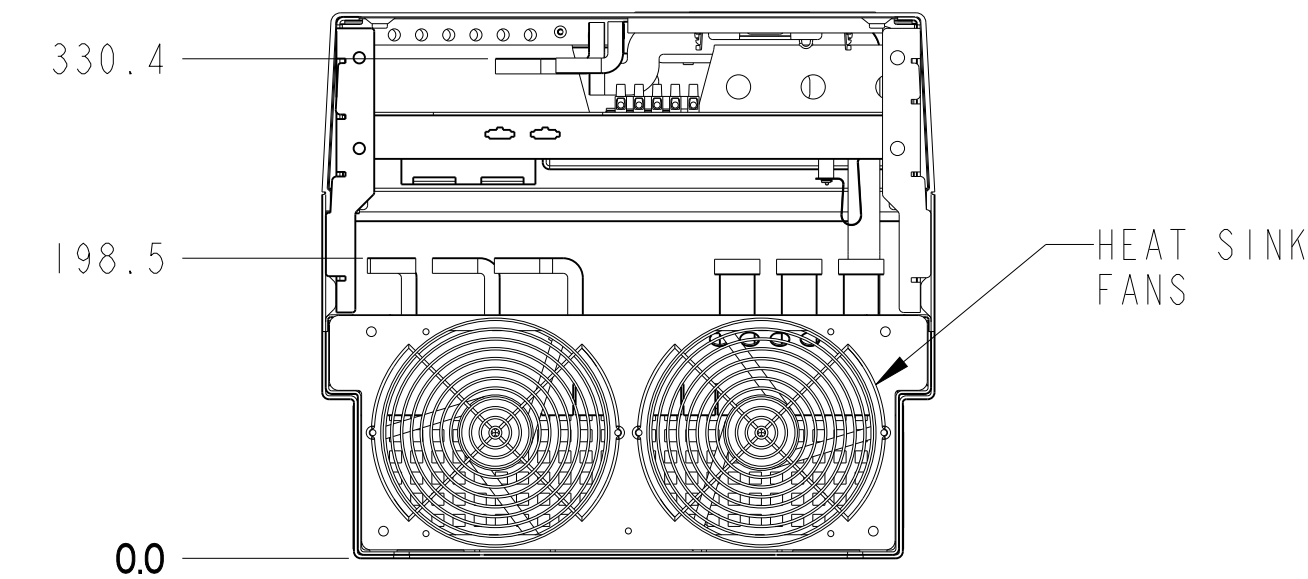
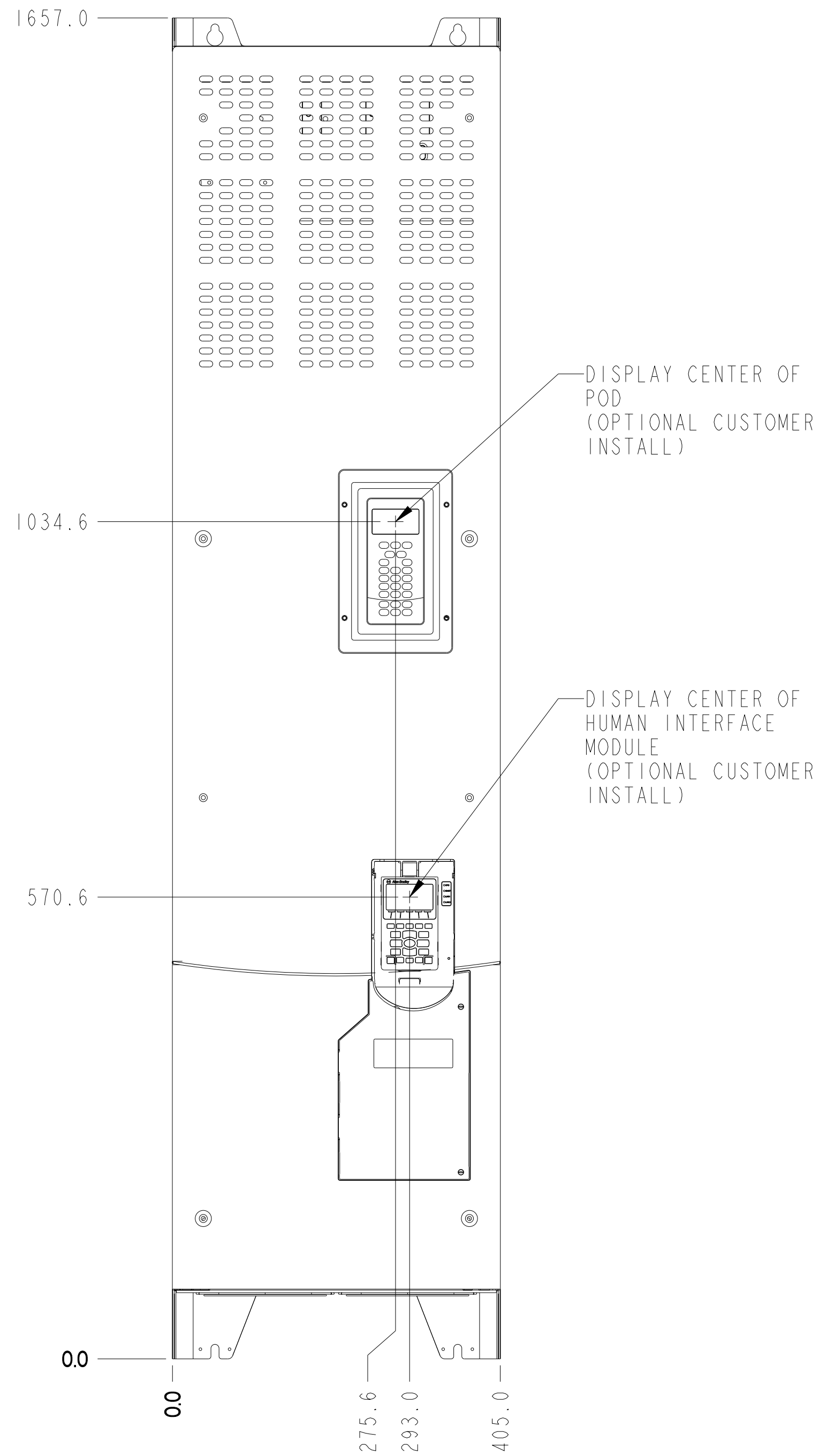
D

E

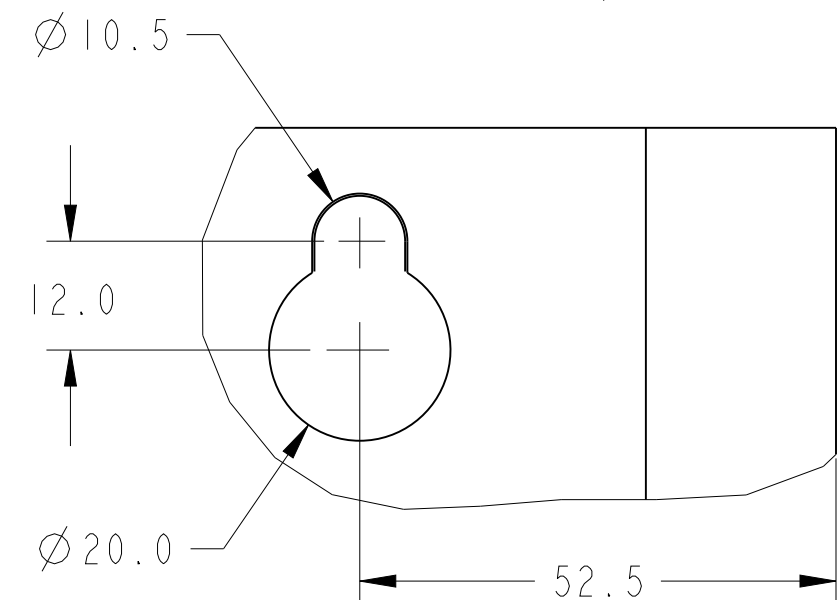
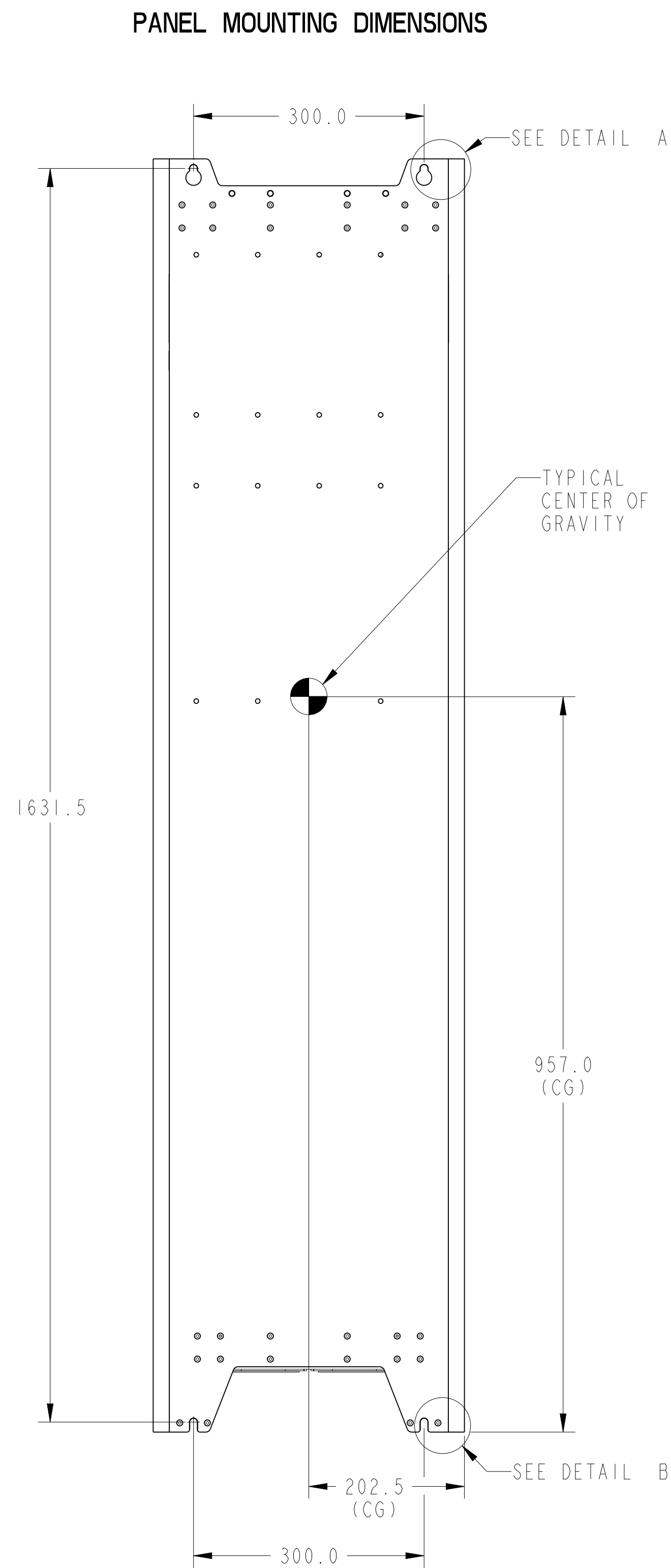
F

G

H

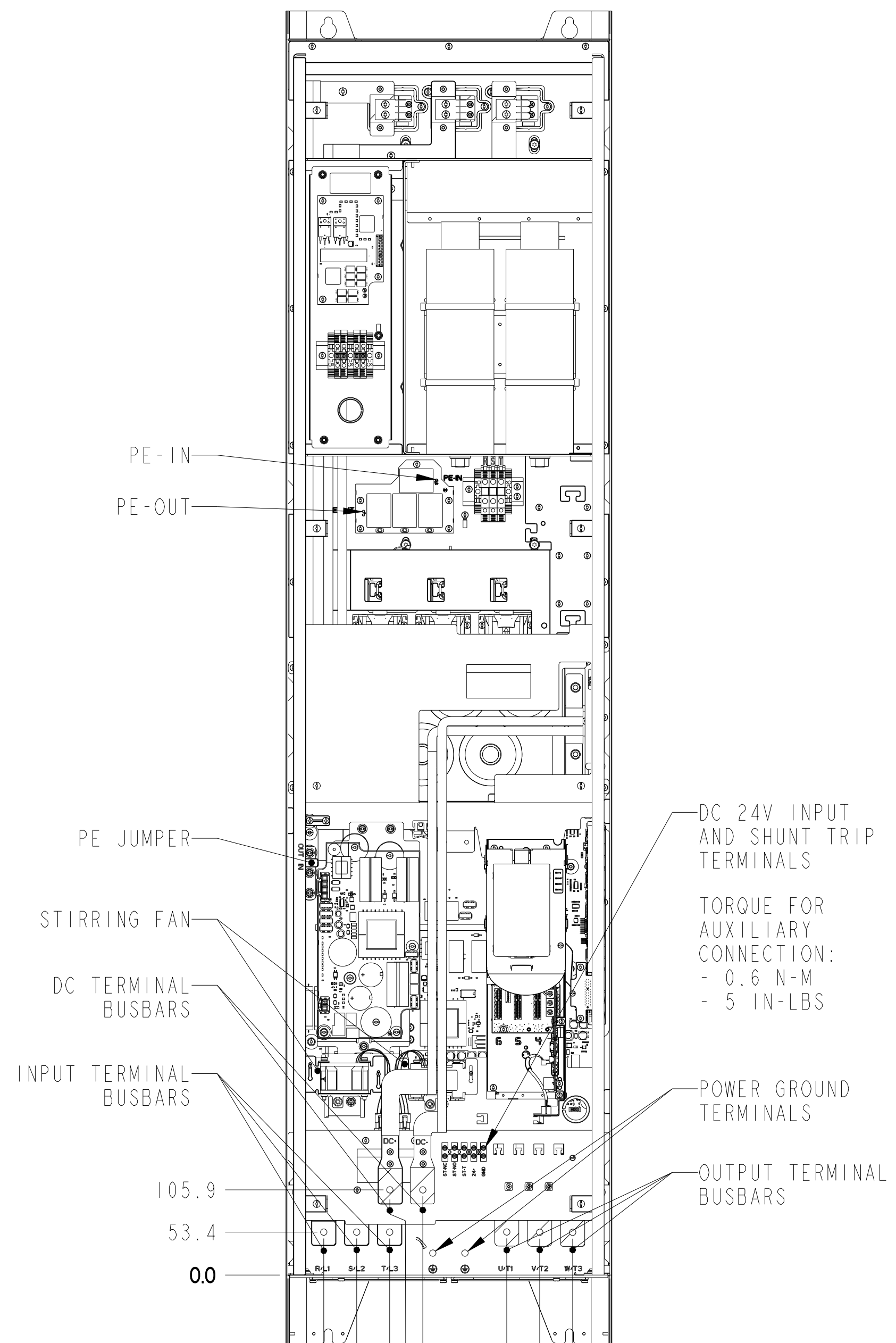


DETAIL B  
DRIVE LOWER MOUNTING  
HOLES 2 PLACES  
SCALE 1.200



DETAIL A  
DRIVE UPPER MOUNTING  
HOLES 2 PLACES  
SCALE 1.200

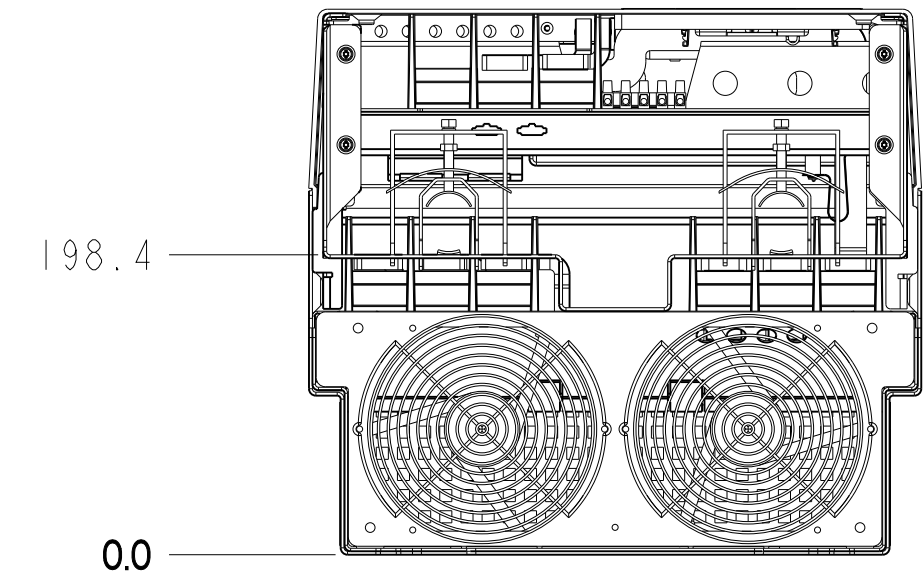
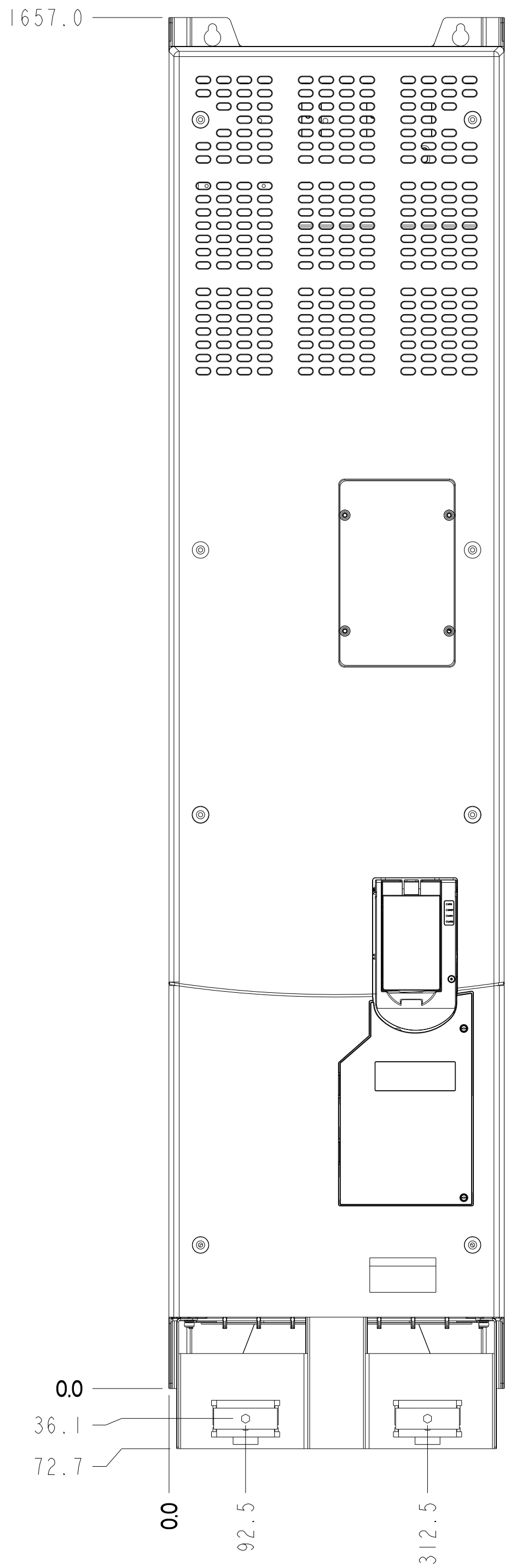
COVER & HIM BEZEL REMOVED



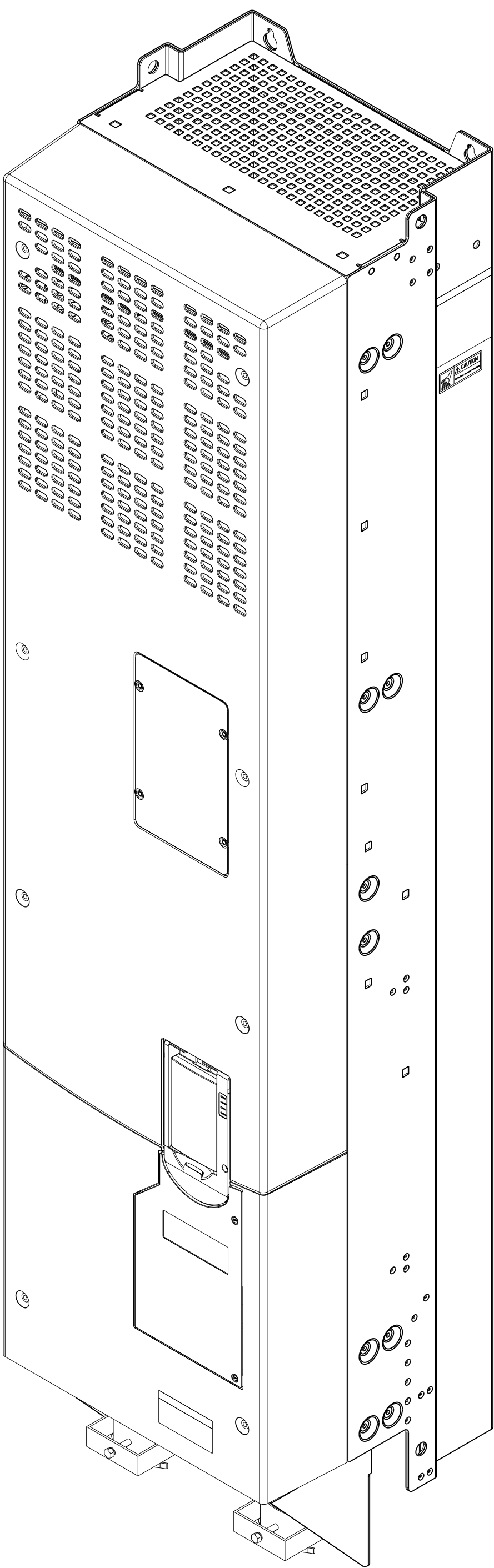
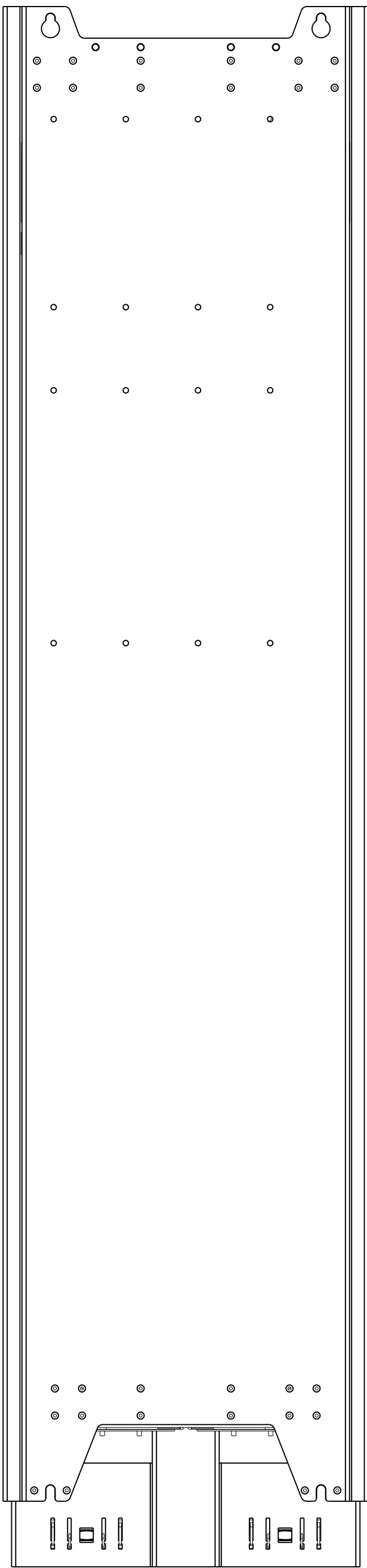
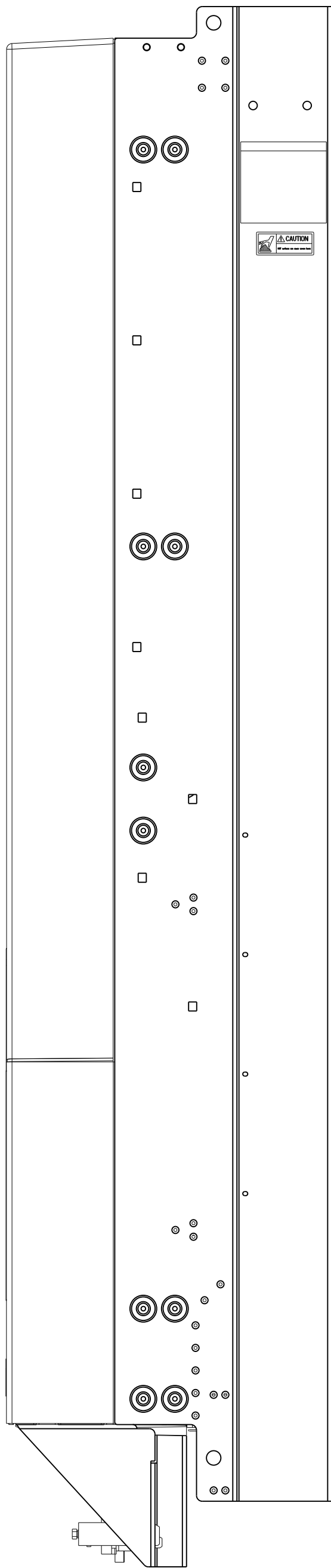
TORQUE FOR POWER CONNECTIONS:  
- 11.3 N-M  
- 100 IN-LBS

ALL UNDIMENSIONED GEOMETRIES ARE CONTROLLED BY THE CAD MODEL. IN CASE OF DIMENSION DISCREPANCY, CAD MODEL OVERRIDES.		<b>Rockwell Automation</b>		CONFIDENTIAL AND PROPRIETARY INFORMATION. THIS DOCUMENT CONTAINS CONFIDENTIAL AND PROPRIETARY INFORMATION OF ROCKWELL AUTOMATION, INC. AND MAY NOT BE USED, COPIED OR DISCLOSED TO OTHERS, EXCEPT WITH THE AUTHORIZED WRITTEN PERMISSION OF ROCKWELL AUTOMATION, INC.	
THIRD ANGLE PROJECTION		DESCRIPTION		DATE: 2018-10-24	SHEET 2 OF 4
		PF755T, AFEF6, INSTALLATION SPECIFICATION		SIZE D1R	VER
CREATED BY: SMARCIN		CHANGED BY: SMARCIN		D	10003954593
					01

UL OPEN TYPE / IP00  
(WITH GROUND PLATE FOR EMC C3 COMPLIANCE)

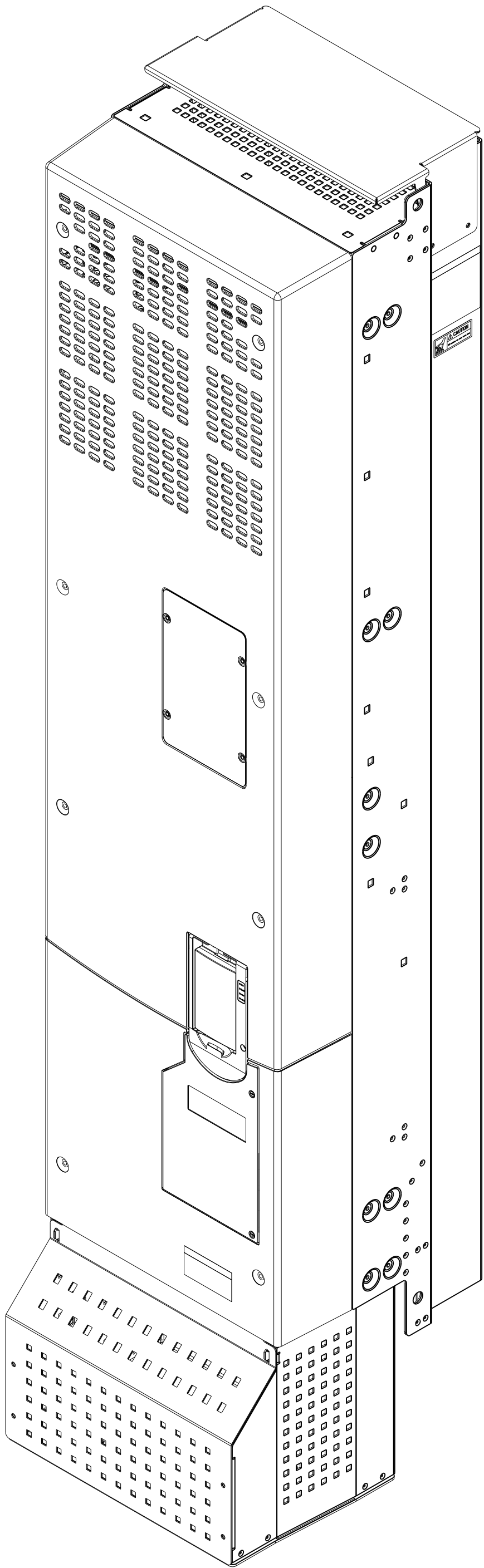
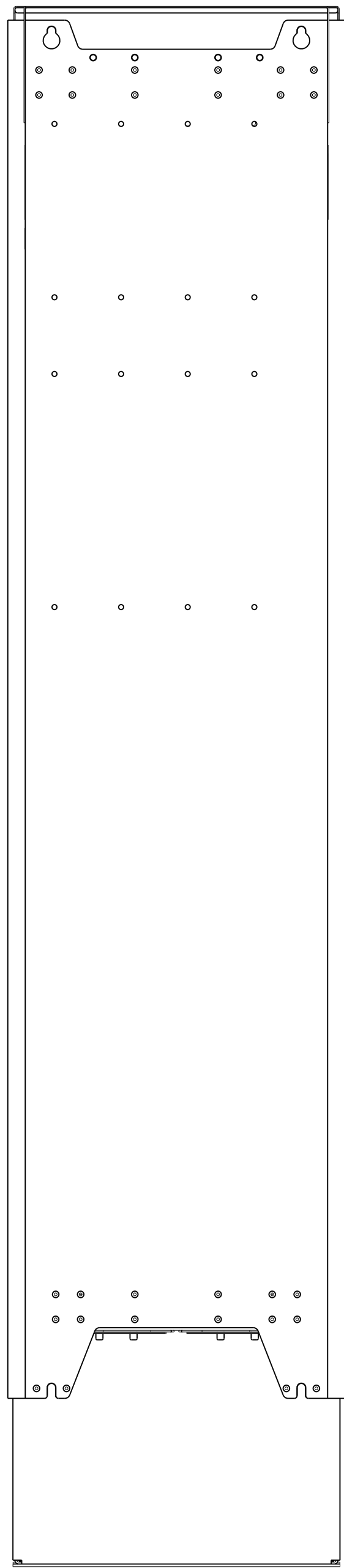
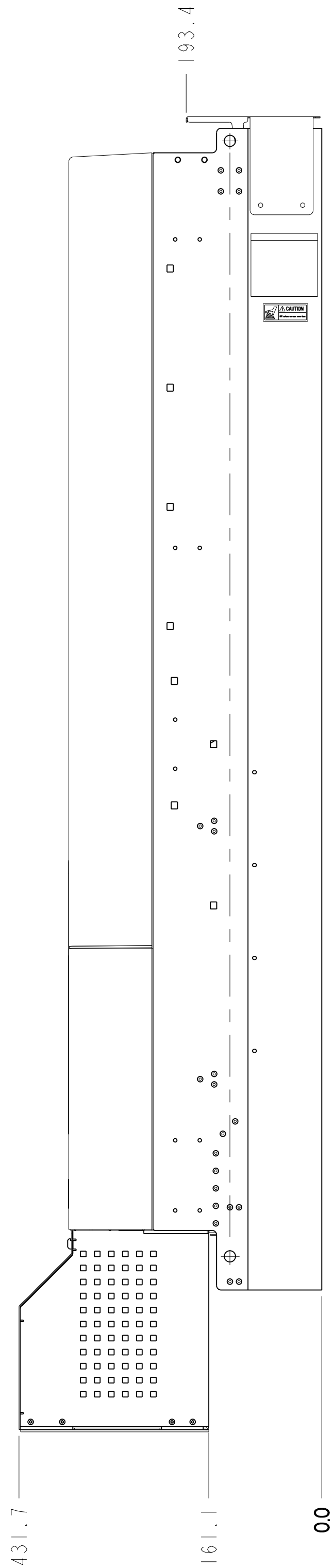
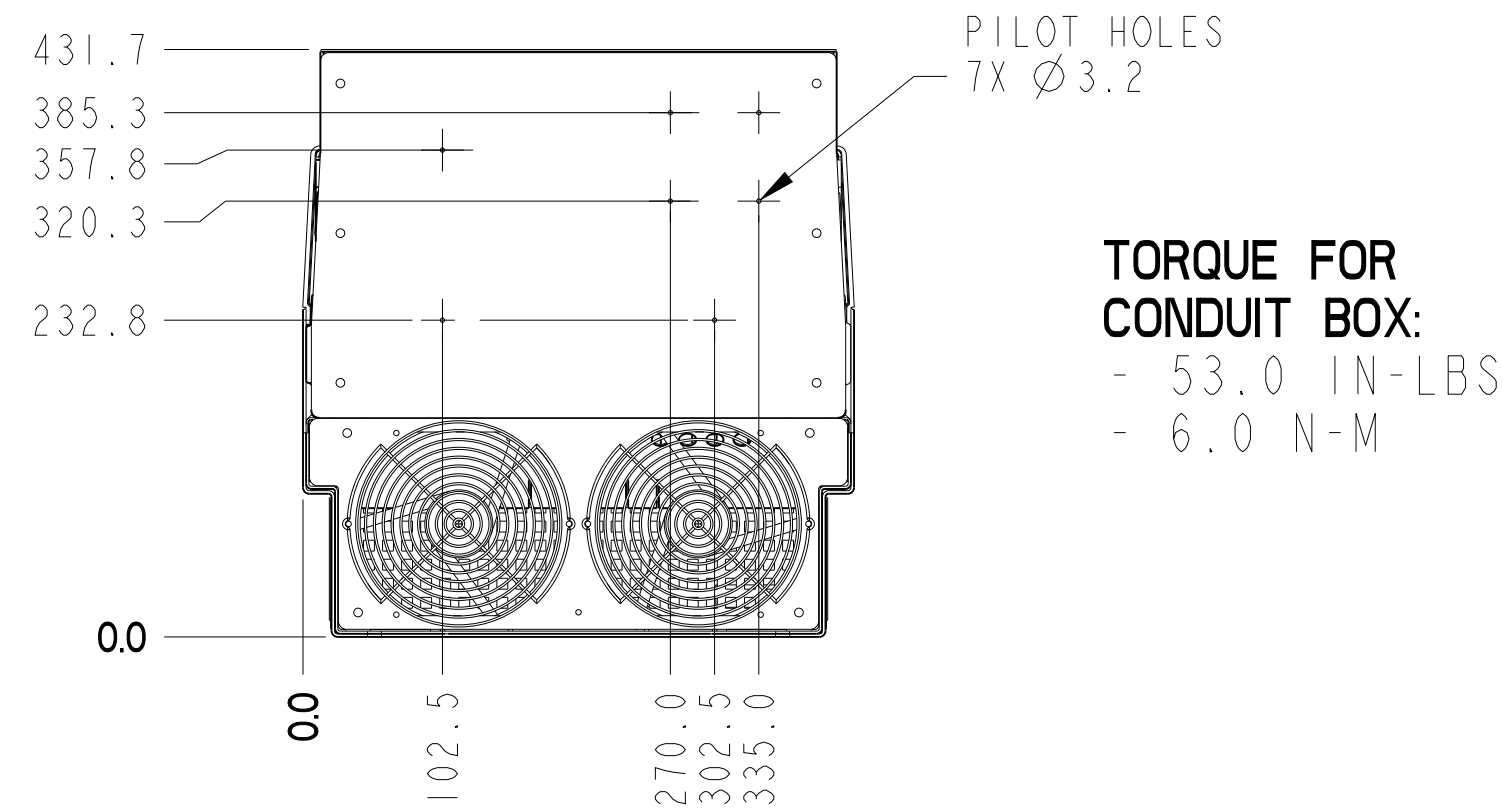
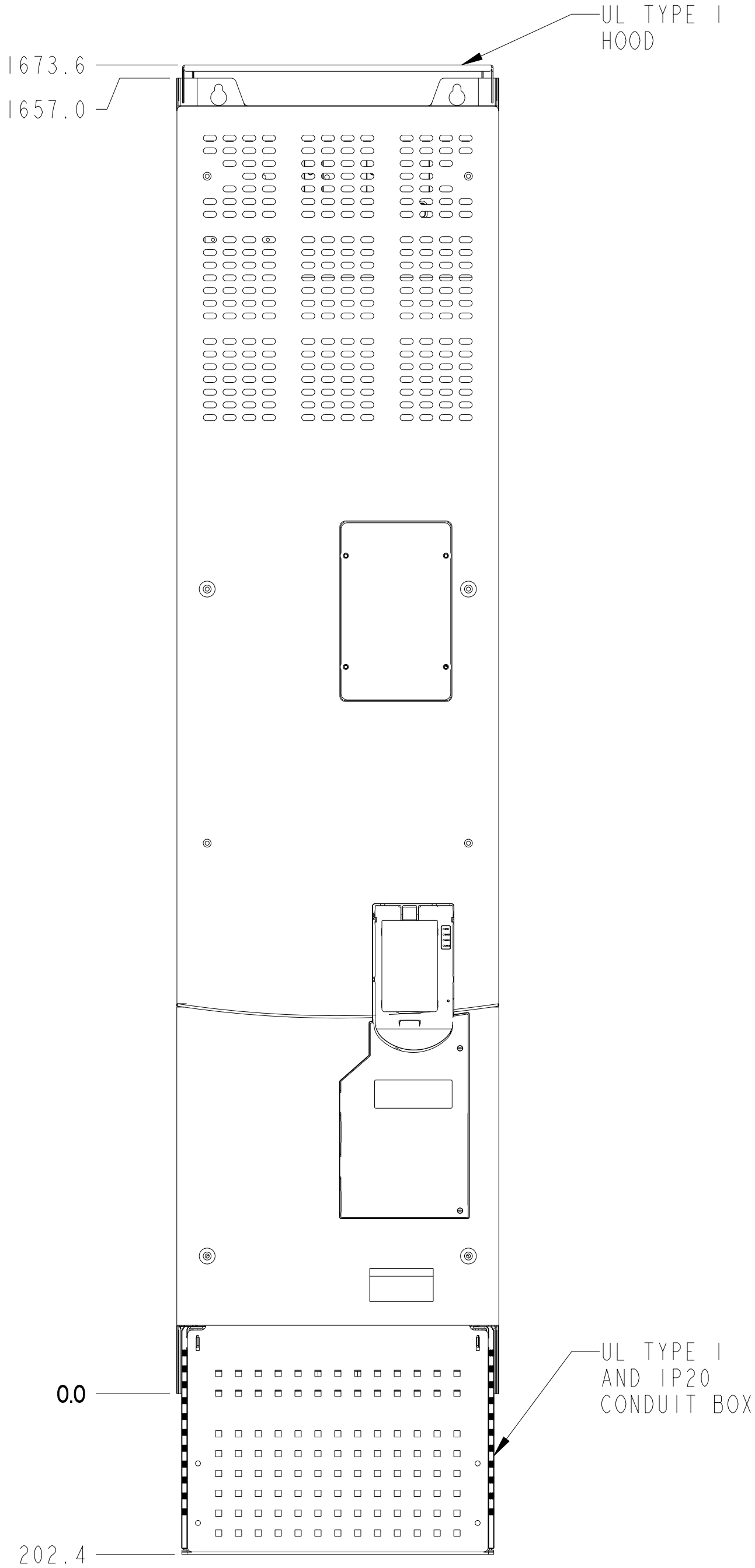


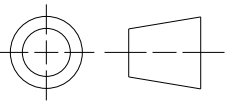
TORQUE FOR  
GROUNDING PLATE:  
- 53.0 IN-LBS  
- 6.0 N-M



<b>Rockwell Automation</b>	CONFIDENTIAL AND PROPRIETARY INFORMATION THIS DOCUMENT CONTAINS CONFIDENTIAL AND PROPRIETARY INFORMATION OF ROCKWELL AUTOMATION, INC. AND MAY NOT BE USED, COPIED OR DISCLOSED TO OTHERS, EXCEPT WITH THE AUTHORIZED WRITTEN PERMISSION OF ROCKWELL AUTOMATION, INC.	
	DATE: 2018-10-24	SHEET 3 OF 4
DESCRIPTION PF755T, AFEF6, INSTALLATION SPECIFICATION		SIZE D1R VER
D 10003954593		01
CREATED BY: SMARCIN		CHANGED BY: SMARCIN

UL TYPE 1 / IP20



ALL UNDIMENSIONED GEOMETRIES ARE CONTROLLED BY THE CAD MODEL. IN CASE OF DIMENSION DISCREPANCY, CAD MODEL OVERRIDES.		<b>Rockwell Automation</b>		CONFIDENTIAL AND PROPRIETARY INFORMATION. THIS DOCUMENT CONTAINS CONFIDENTIAL AND PROPRIETARY INFORMATION OF ROCKWELL AUTOMATION, INC. AND MAY NOT BE USED, COPIED OR DISCLOSED TO OTHERS, EXCEPT WITH THE AUTHORIZED WRITTEN PERMISSION OF ROCKWELL AUTOMATION, INC.	
THIRD ANGLE PROJECTION 		DESCRIPTION <b>PF755T.AFEF6,INSTALLATION SPECIFICATION</b>		DATE: 2018-10-24	SHEET 4 OF 4
CREATED BY: SMARCIN		CHANGED BY: SMARCIN		SIZE: D1R <b>10003954593</b>	VER: 01