

TYPE 1 DRIVE
AFTER TYPE 1 KIT
INSTALLATION

OPEN DRIVE

ALL UNDIMENSIONED GEOMETRIES
SHOWN IN THIS DRAWING ARE FOR
MODELING PURPOSES ONLY. IN THE
MODEL, IN CASE OF DIMENSION
DISCREPANCY, CAD MODEL
OVERRIDES.

THIRD ANGLE PROJECTION



STANDARD-SUBMITTAL_FF75TS-F-7A

CREATED BY:MMUR

CHANGED BY:MMUR

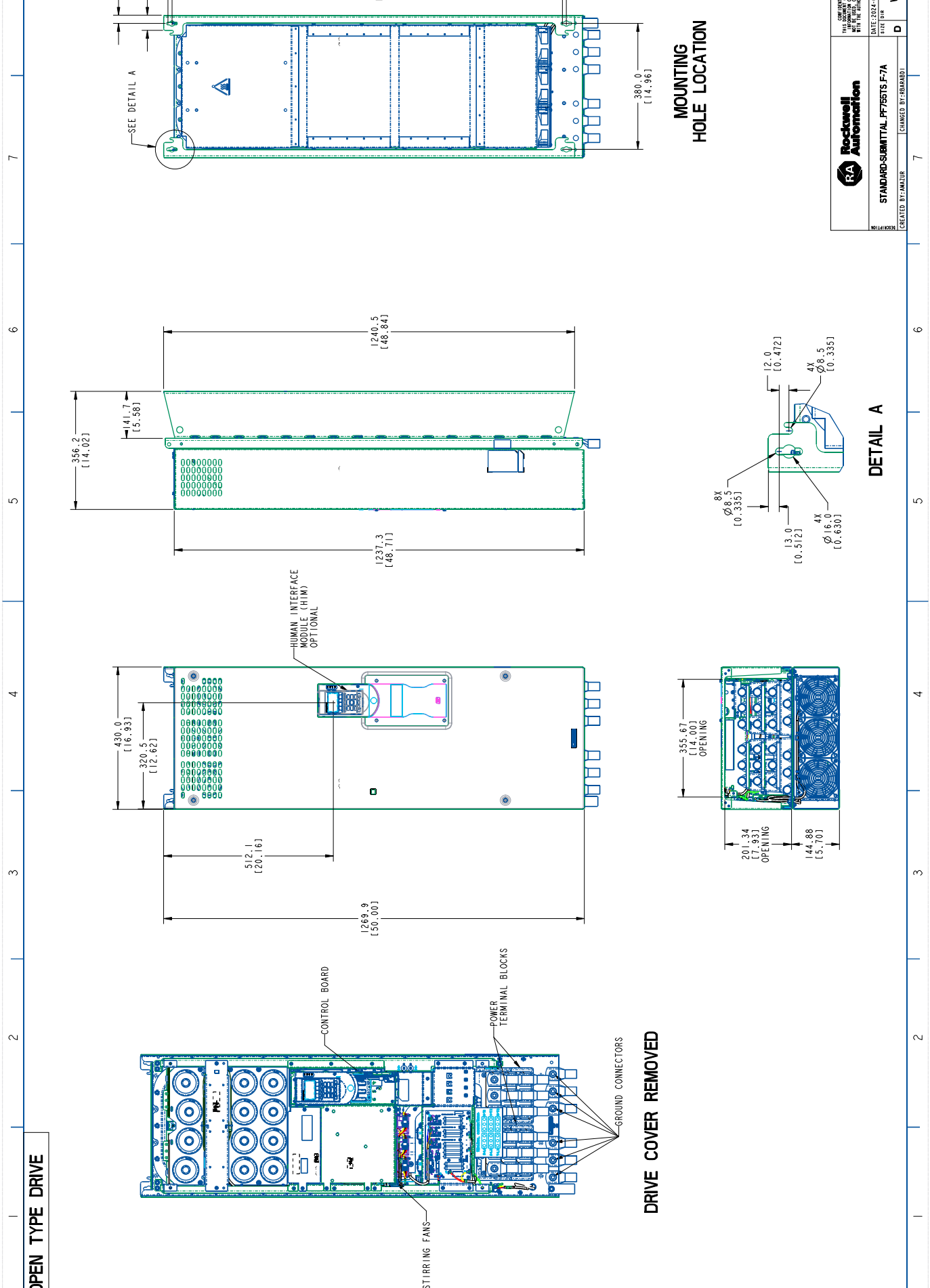
DATE: 2024-08-02

SHEET 1 OF 3

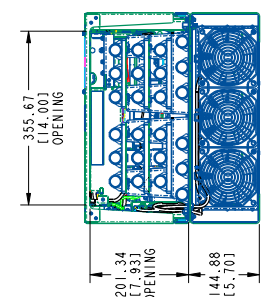
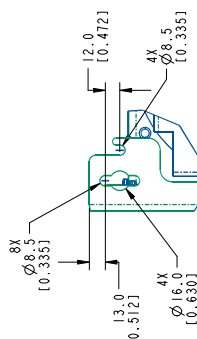
W000164797

00

COMPLIANCE AND PROPERTY INFORMATION:
THIS DOCUMENT IS UNCLASSIFIED INFORMATION.
IT IS THE PROPERTY OF ROCKWELL AUTOMATION. IT IS TO BE
CONTROLLED AND NOT TO BE RELEASED OR DISSEMINATED
WITHOUT THE AUTHORIZATION OF ROCKWELL AUTOMATION.



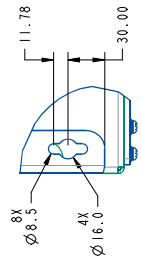
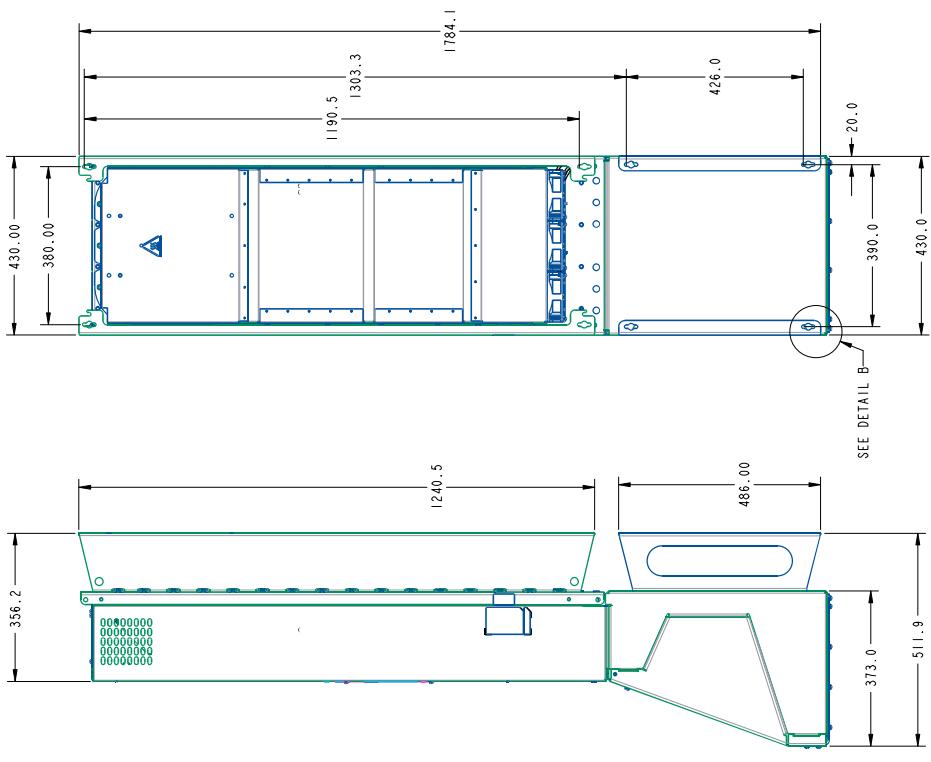
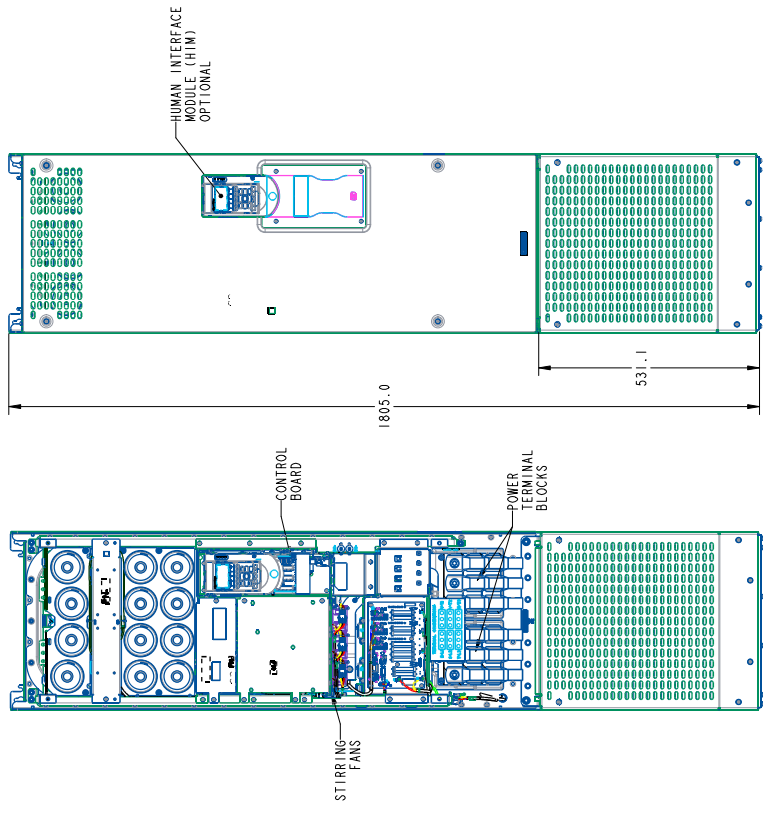
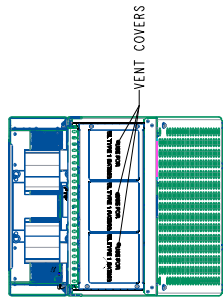
MOUNTING HOLE LOCATION



		DATE: 2024-08-02 SHEET 2 OF 3
STANDARD-SUBMITTAL_FF765TS-F-7A		SIZE: DIR D
CREATED BY: MUR	CHANGED BY: MUR	WOOD0164797 00

8 7 6 5 4 3 2 1

TYPE 1 DRIVE



DETAIL B

MOUNTING HOLE LOCATION
FOR DRIVE MOUNTING HOLE LOCATION
SEE PAGE 2
DETAIL A

Rockwell Automation

STANDARD-SUBMITTAL_FF75TS-F-7A

DATE: 2024-08-02

SHEET 3 OF 3

VER 00

W000164797

CHANGED BY: PBA4B1

CREATED BY: MATOR

8 7 6 5 4 3 2 1