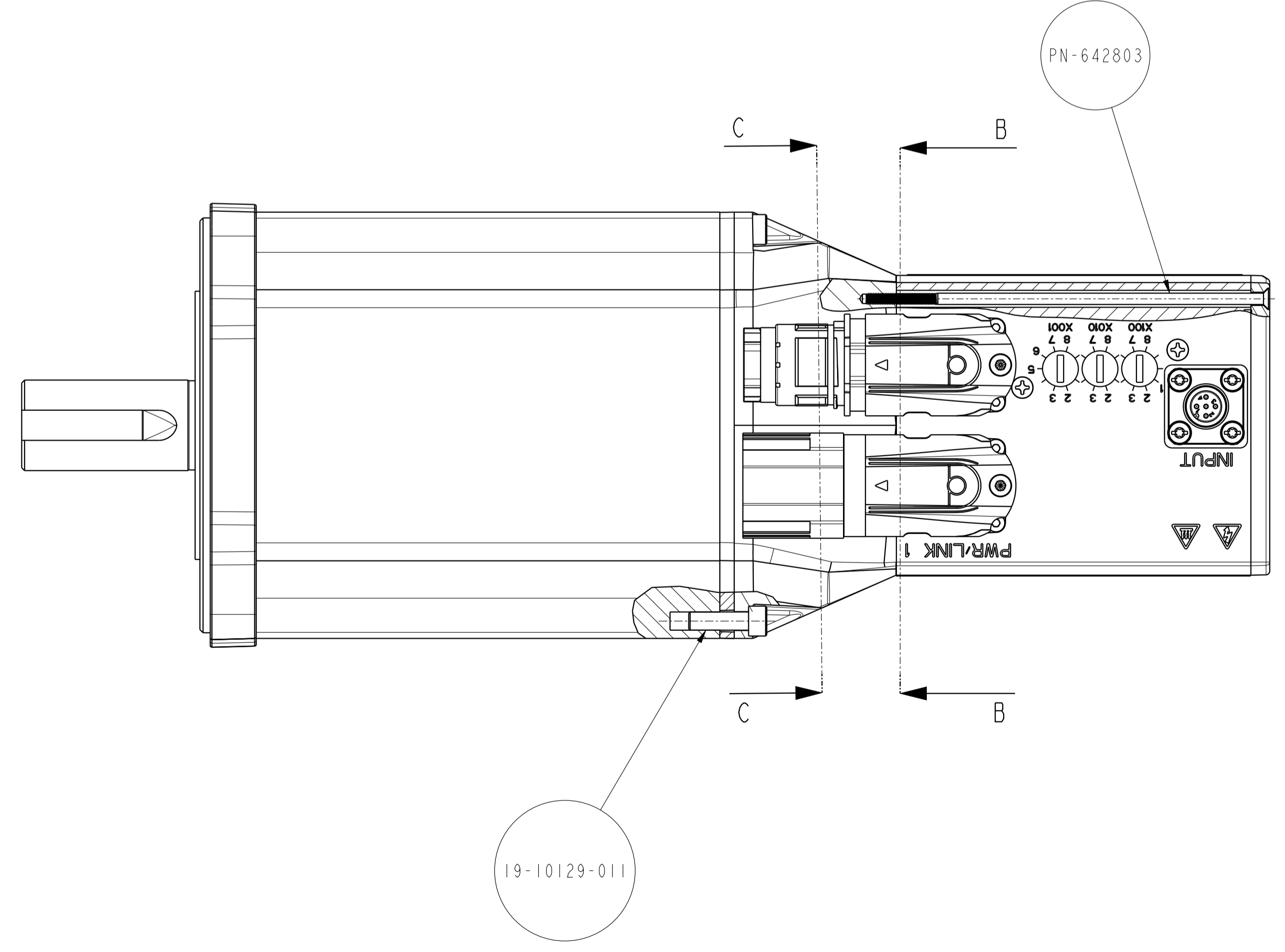
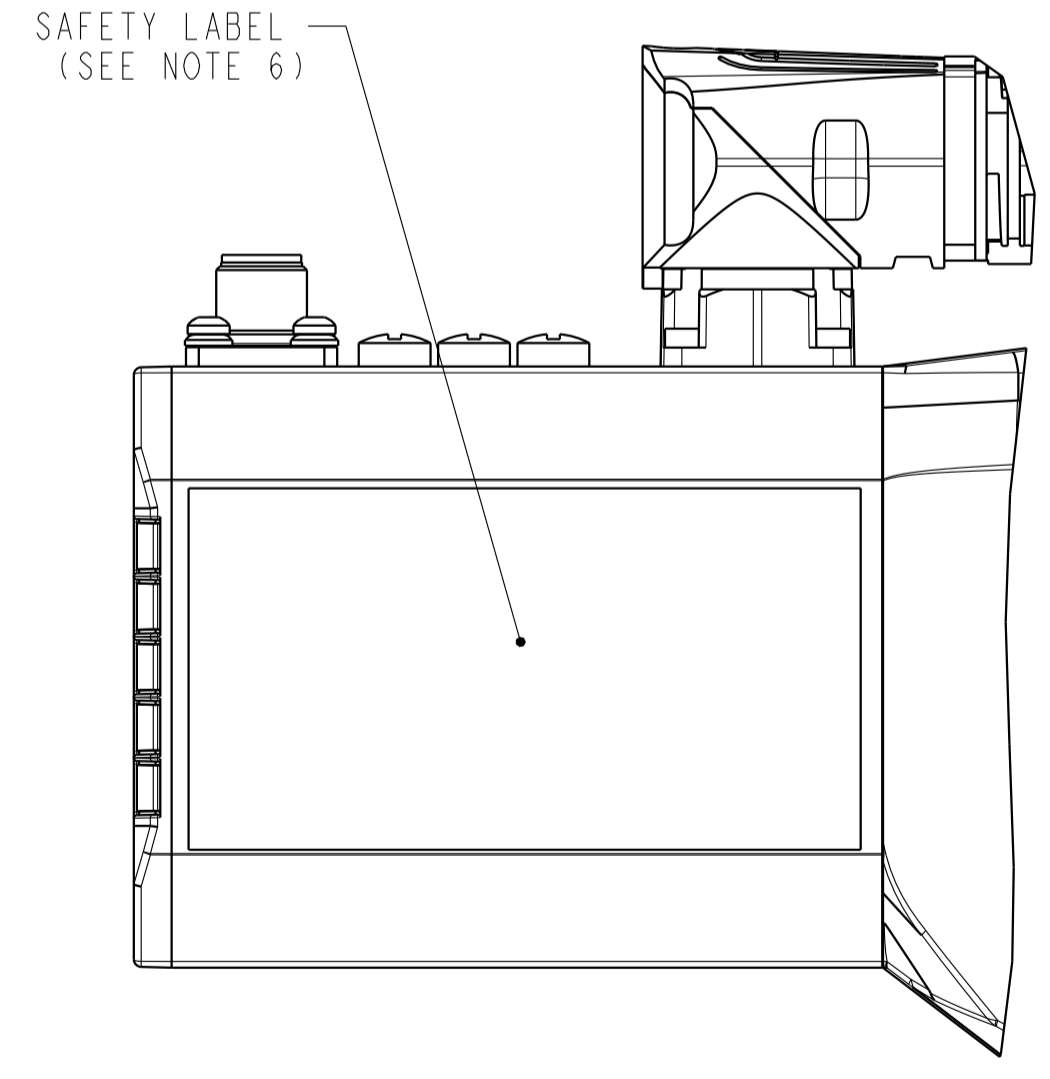
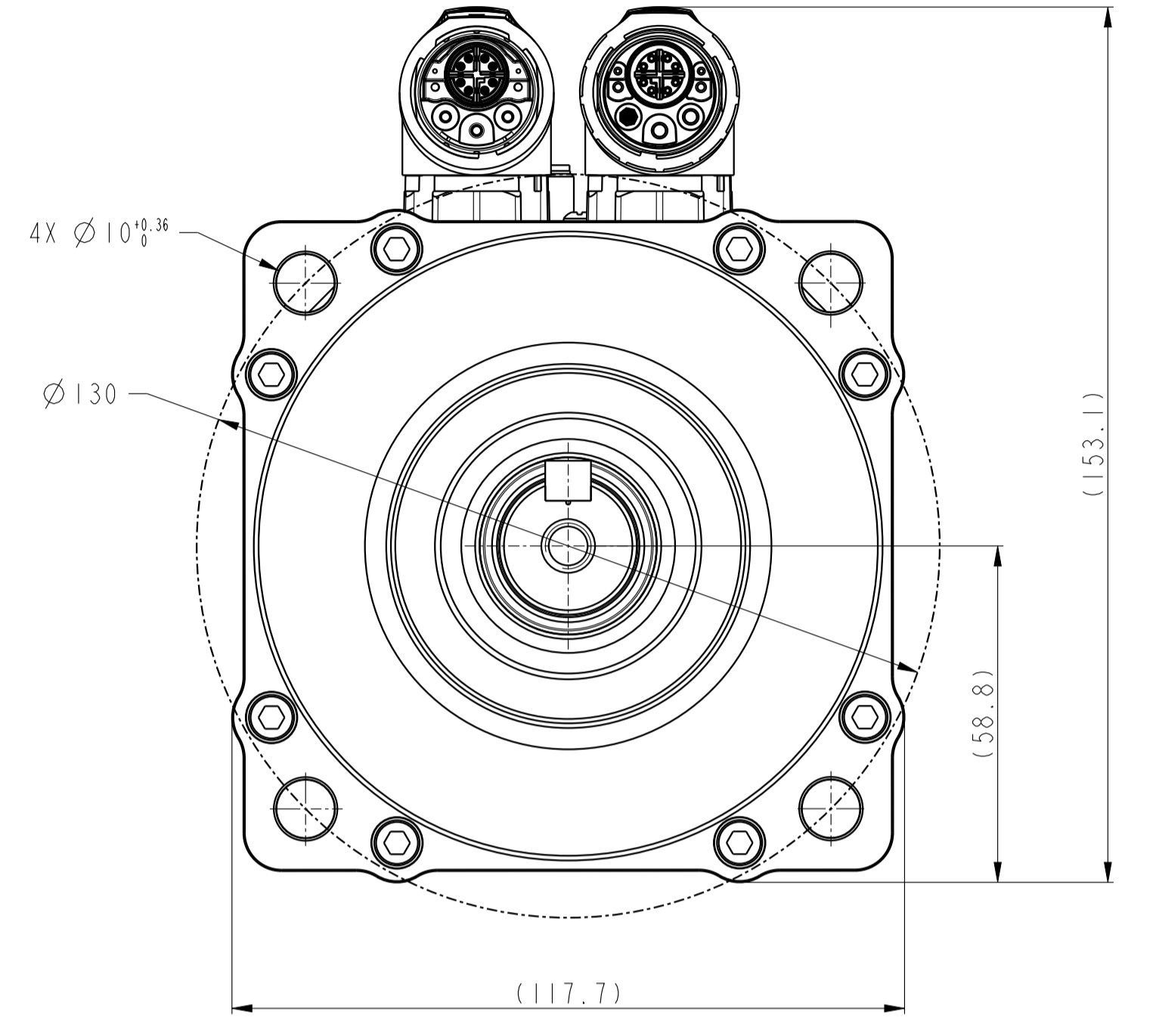
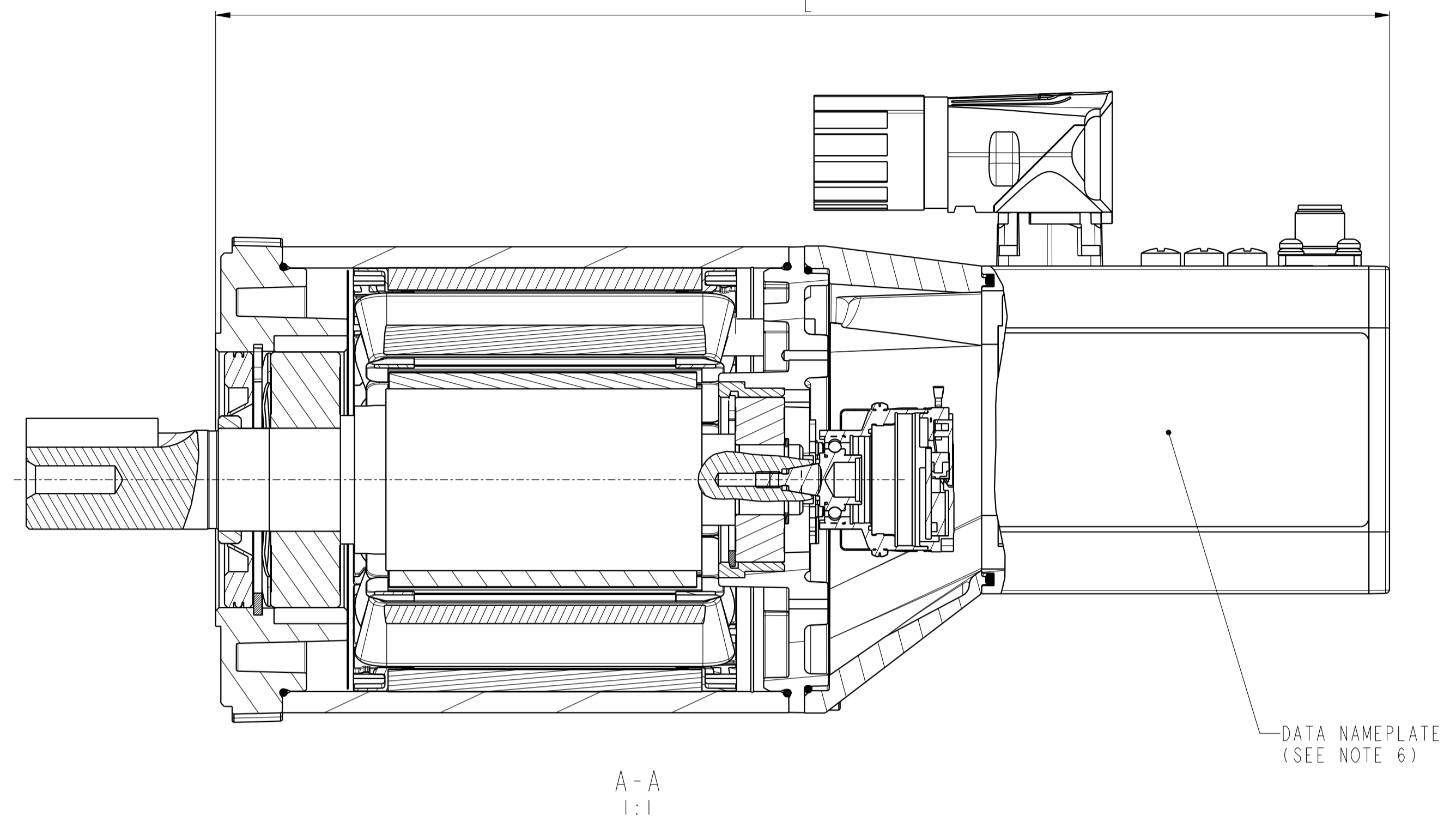
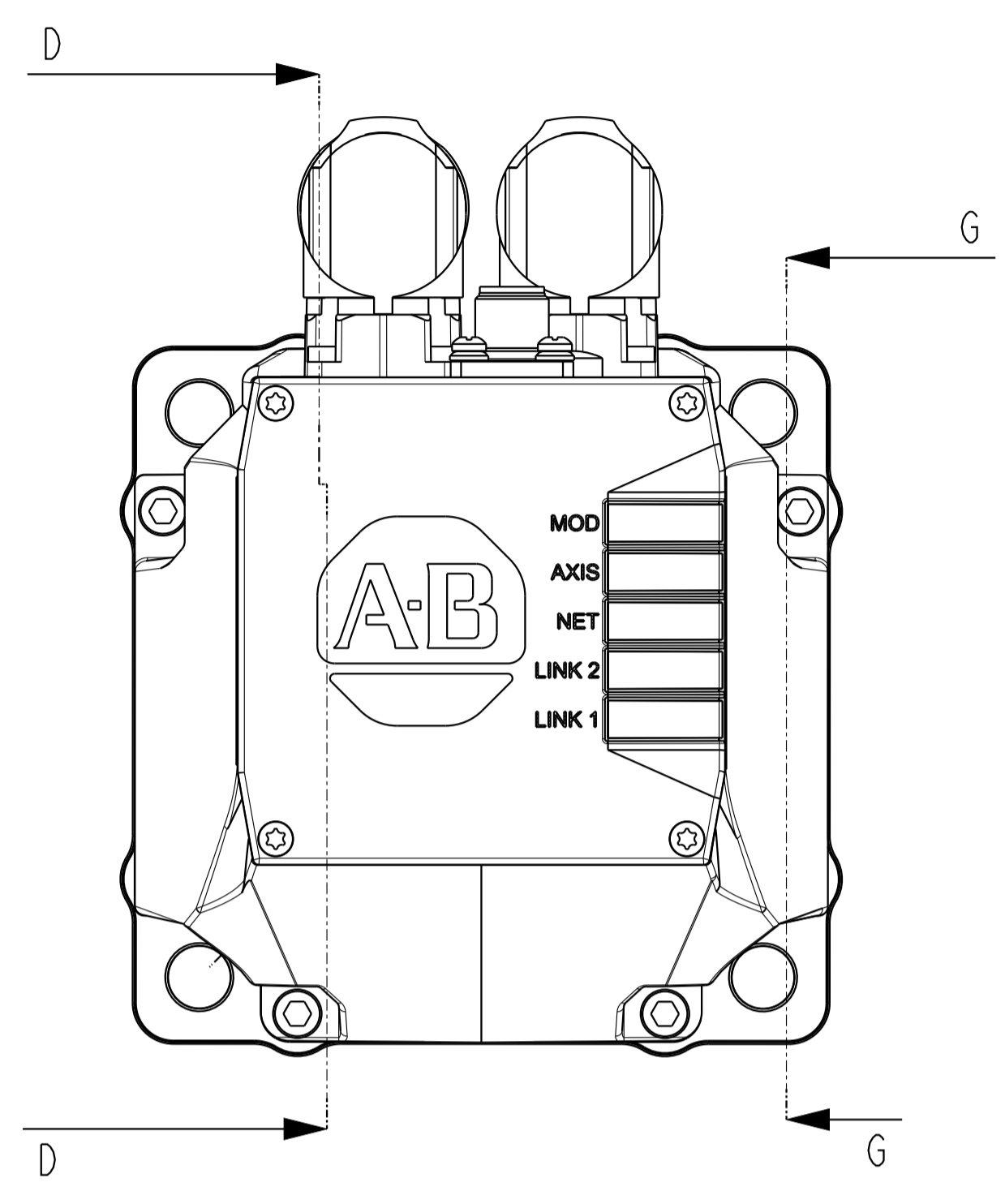


TORQUE TABLE					
PART NO	DESCRIPTION	TORQUE (N-M)	TORQUE (IN-LBS)	TOL ±	QTY
19-10129-011	SCREW,CAP,SOC,HEX,ST,10-32x0.75,CHMK	6.78	60	10%	4
PN-642803	SCREW,FLAT,6LOBE,ST,M3x0.5x107,ZN PLATE	1.3	11.5	10%	4

MOTOR MAGNET STACK LENGTH	L
3	280.9
4	306.3
6	357.1

CRITICAL TO QUALITY CLASSIFICATION TABLE				
P=PERFORMANCE, F=FIT, A=ASSEMBLY X=IDENTIFIES APPLICABLE CLASSIFICATION(S) ⊕=ENGINEERING AND/OR MANUFACTURING REQUIREMENT Ⓜ=REGULATORY REQUIREMENT-CONFORMANCE IS MANDATORY				
COMMENTS	DRAWING ZONE	P	F	A
ROHS	H1			X



- NOTES:
- ASSEMBLE USING FIXTURE DIR 10006509034
 - PACKAGE: PN-638986
 - SHORTEST MOTOR STACK LENGTH SHOWN, SEE TABLE (ZONE A7) FOR ALL LENGTH VARIANTS
 - VPL DRAWING: 10000182307
 - DSx DRAWING: 10006487275
 - LABELS AND MARKINGS PRINTED WITH DIGITAL INK JET

MUST COMPLY WITH ROCKWELL AUTOMATION ENVIRONMENTAL SPECIFICATION 970-20-01

ALL UNDIMENSIONED GEOMETRIES ARE CONTROLLED BY THE CAD MODEL. IN CASE OF DIMENSION DISCREPANCY, CAD MODEL OVERRIDES.



CONFIDENTIAL AND PROPRIETARY INFORMATION. THIS DOCUMENT CONTAINS CONFIDENTIAL AND PROPRIETARY INFORMATION OF ROCKWELL AUTOMATION, INC. AND MAY NOT BE USED, COPIED OR DISCLOSED TO OTHERS, EXCEPT WITH THE AUTHORIZED WRITTEN PERMISSION OF ROCKWELL AUTOMATION, INC.

FIRST ANGLE PROJECTION	INSTR.DSM-130	DATE: 2023-02-17	SHEET 1 OF 2
CREATED BY: JZDONEK	CHANGED BY: FMACIEJOWSKI	SIZE DIR	VER
		A1	10006790052
			02

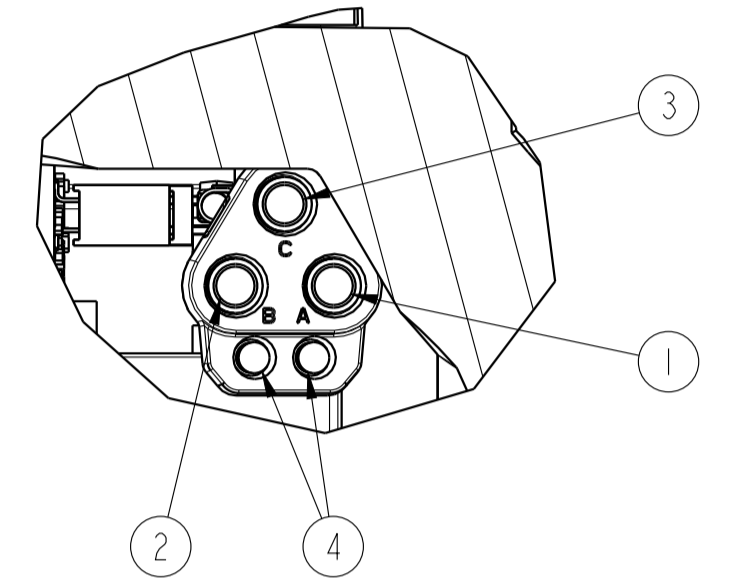
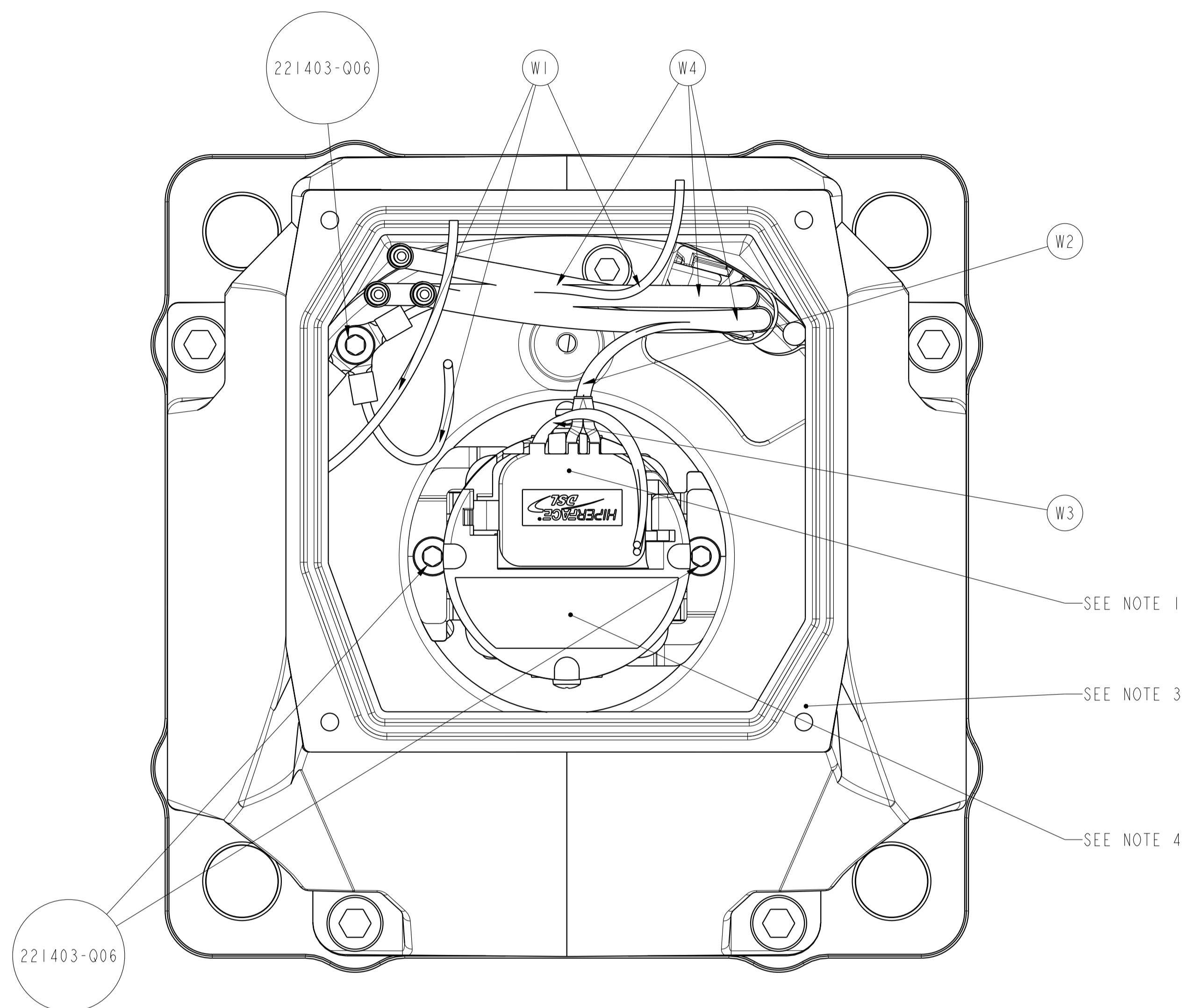
10006653759
MODEL DIR NO

TORQUE TABLE					
PART NO	DESCRIPTION	TORQUE (N-M)	TORQUE (IN-LBS)	TOL ±	QTY
221403-Q06	SCREW,CAP,SOC,6LOBE,CS,M3x0.5x6,THLK	0.8	7.1	10%	3
PN-434221	ENCODER 'P'/'C' SHAFT MOUNTING THREAD	4.0	35.4	5%	1
PN-W03597	ENCODER 'T' SCREW,MACH,Cap,HEXALOB (TORX),SS	3.1	27.4	10%	1
PN-W03560	ENCODER 'T' CAP SCREW T08	0.5	4.4	10%	1

DSM WIRES CONNECTIONS			
DESCRIPTION	FROM	TO	MARKING
GROUND WIRES	DSX	MOTOR	W1
THERMISTOR WIRES	MOTOR	ENCODER	W2
FEEDBACK WIRES	DSX	ENCODER	W3
UVW WIRES	MOTOR	PN-W01465	W4

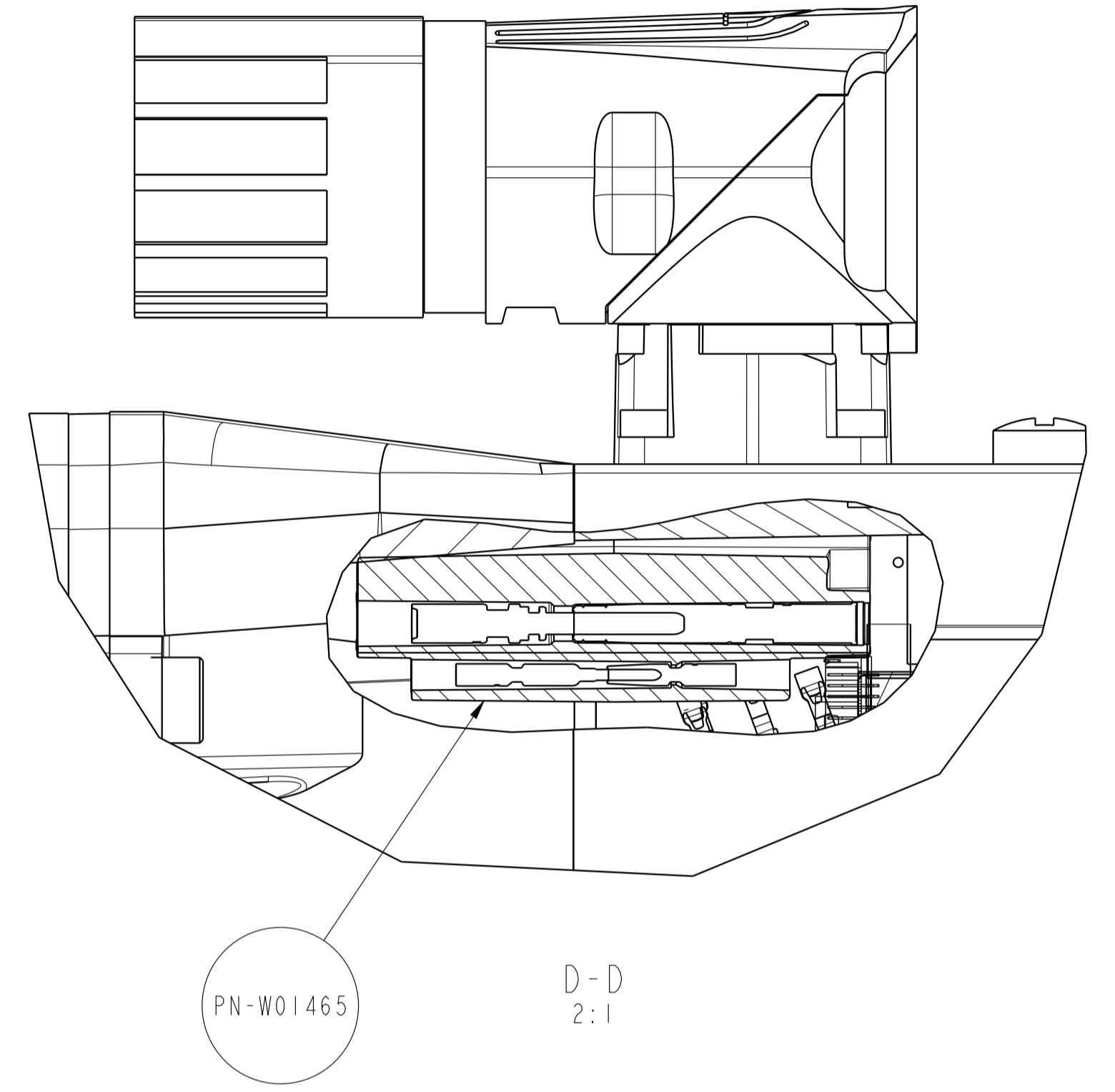
ENCODER SYMBOL	STANDARD/SAFETY	ENCODER PN
C	STANDARD	PN-434221
P	STANDARD	PN-434220
T	SAFETY	PN-W03560

CRITICAL TO QUALITY CLASSIFICATION TABLE				
P=PERFORMANCE, F=FIT, A=ASSEMBLY X=IDENTIFIES APPLICABLE CLASSIFICATION(S) ⊕=ENGINEERING AND/OR MANUFACTURING REQUIREMENT Ⓢ=REGULATORY REQUIREMENT-CONFORMANCE IS MANDATORY				
COMMENTS	DRAWING ZONE	P	F	A
ROHS	H1			X
NOTE 3	G6	X		

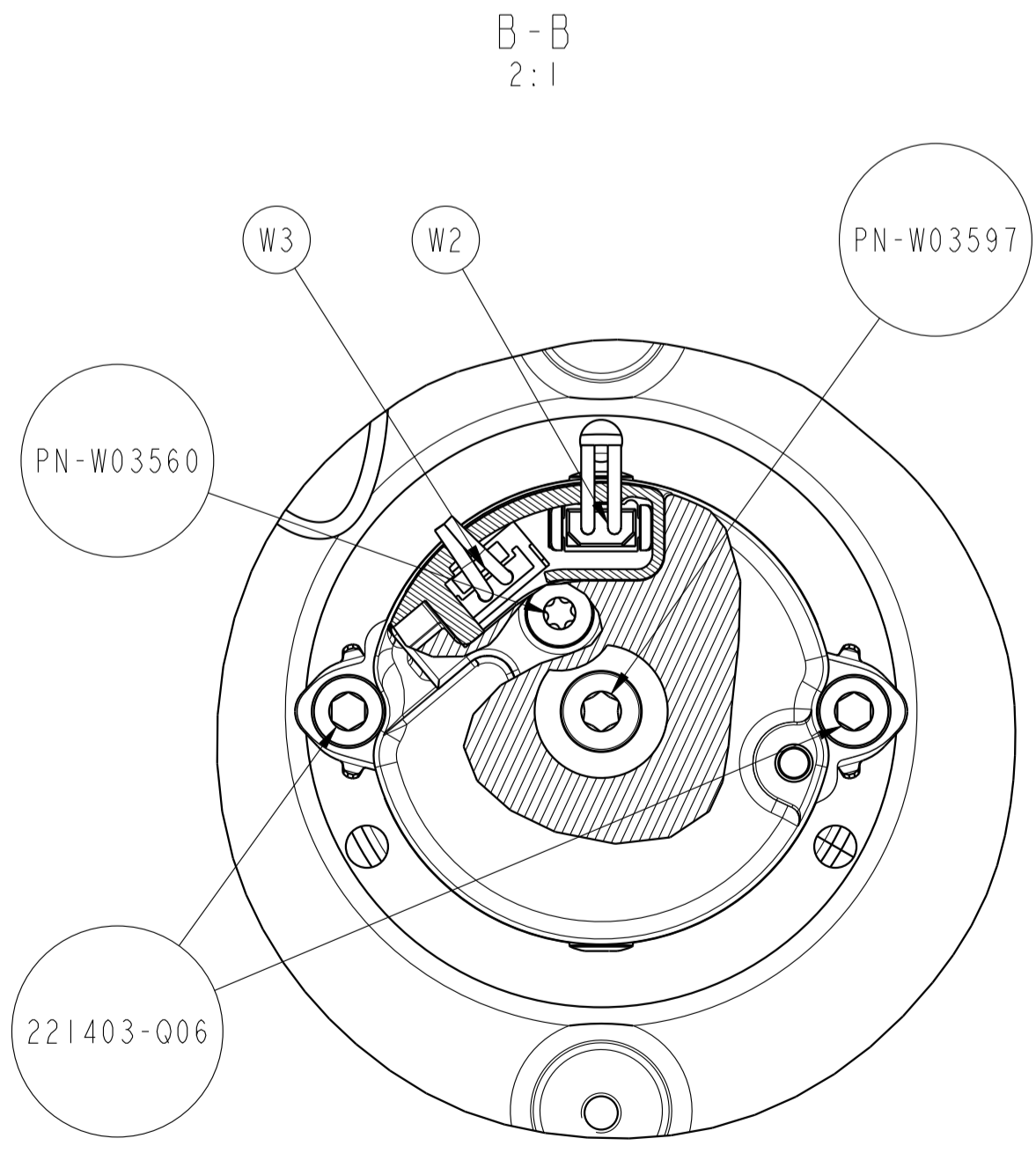


C-C
2:1

PN-W01465 CONNECTIONS			
NO	FUNCTION	COLOR	SLOT MARKING
1	U	RED	A
2	V	BLACK	B
3	W	BLUE	C
4	NONE	NONE	NONE



D-D
2:1



B-B
2:1

ENCODER 'T'
2:1

- NOTES:
- 1) OPEN ENCODER COVER AND CONNECT THERMISTOR WIRES (W2) AND FEEDBACK WIRES (W3)
 - 2) INSERT WIRES TO ENCODER SLOT CAREFULLY, DO NOT BEND
 - 3) PAINT SHALL NOT BE ON THIS SURFACE
 - 4) ENCODER 'C'/'P' SHOWN, SEE TABLE (ZONE A7) FOR ALL ENCODER MODELS

		<small>CONFIDENTIAL AND PROPRIETARY INFORMATION. THIS DOCUMENT CONTAINS CONFIDENTIAL AND PROPRIETARY INFORMATION OF ROCKWELL AUTOMATION, INC. AND MAY NOT BE USED, COPIED OR DISCLOSED TO OTHERS, EXCEPT WITH THE AUTHORIZED WRITTEN PERMISSION OF ROCKWELL AUTOMATION, INC.</small>	
		INSTR.DSM-130 *****	DATE: 2023-02-17 SIZE: D1R SHEET 2 OF 2
CREATED BY: JZDONEK	CHANGED BY: FMACIEJOWSKI	A1	10006790052
			02