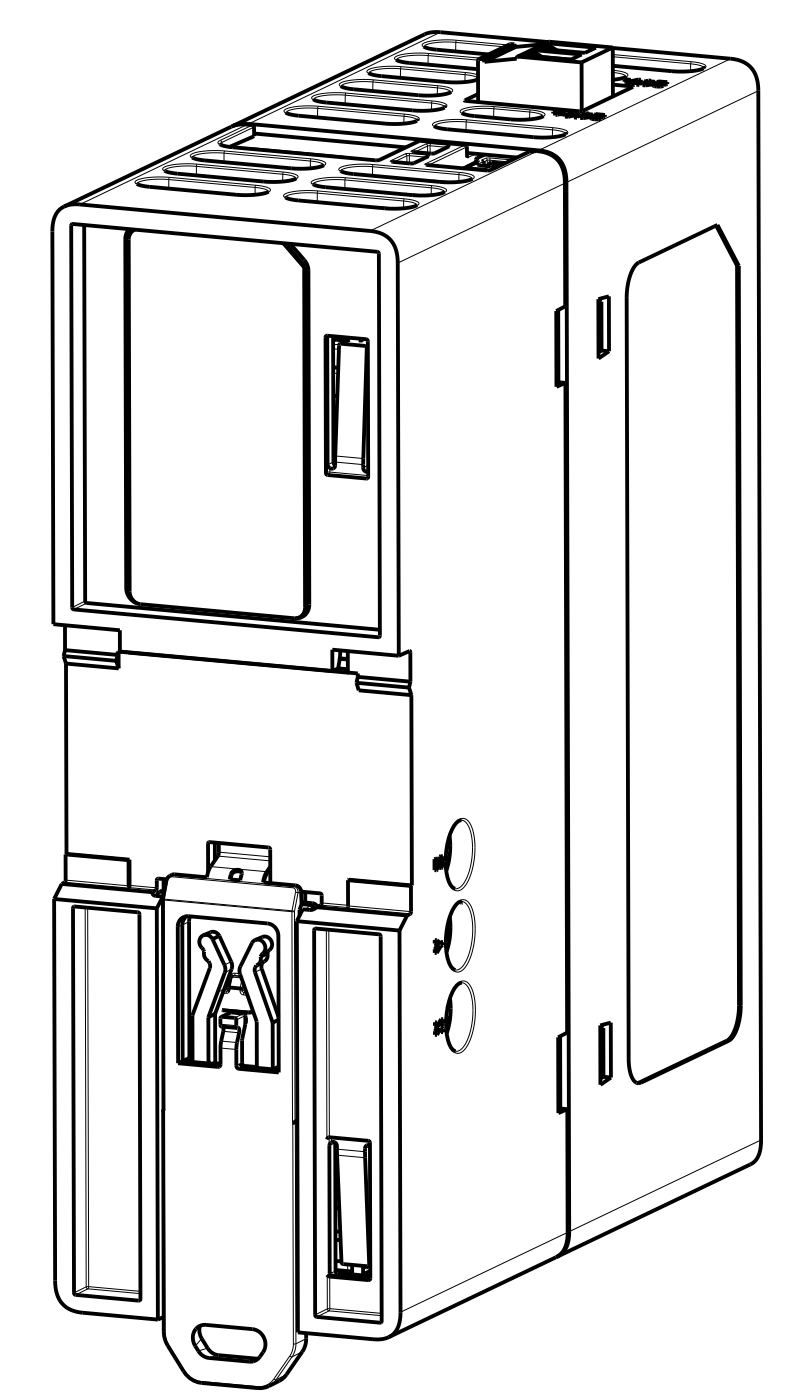
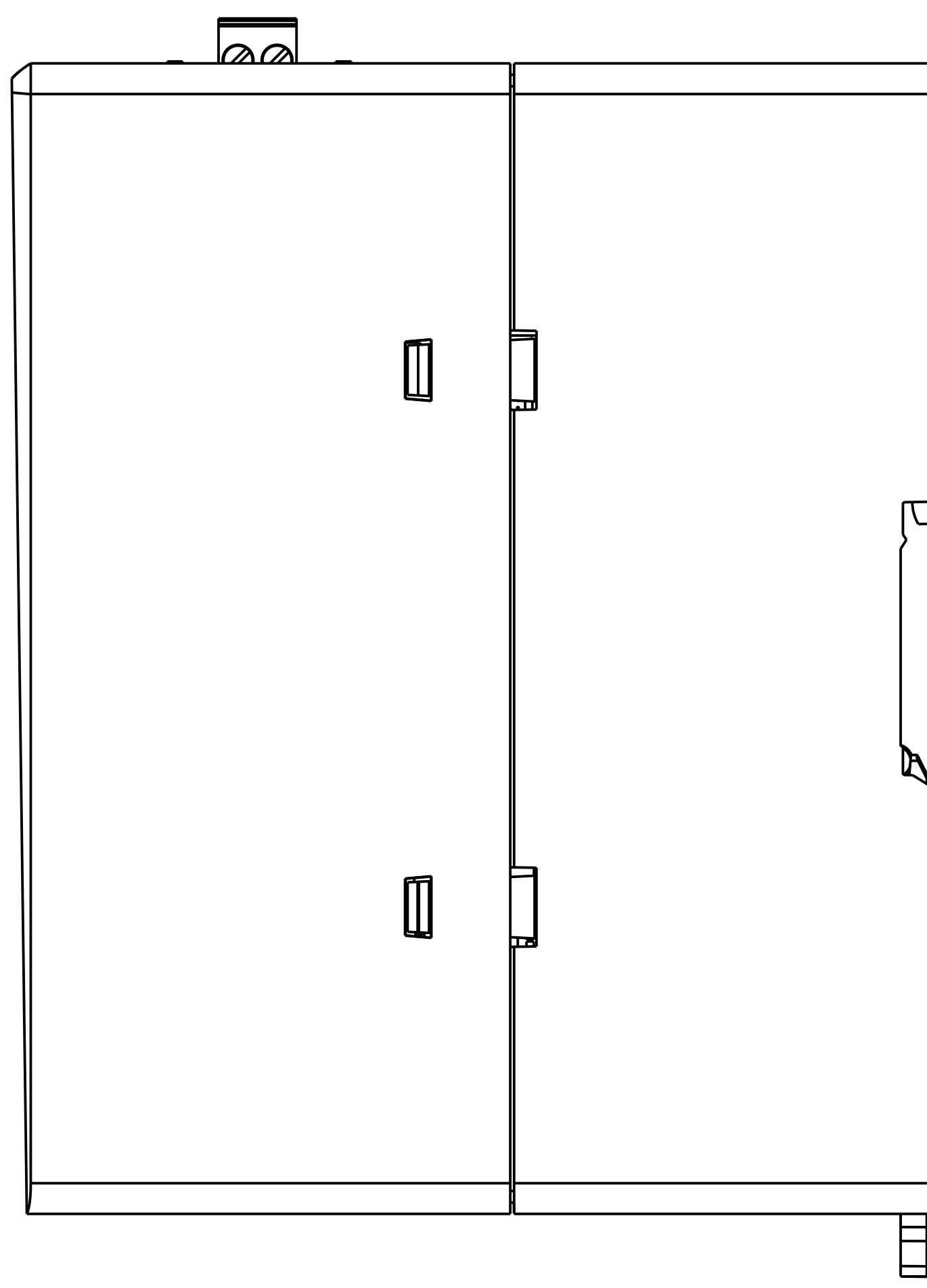
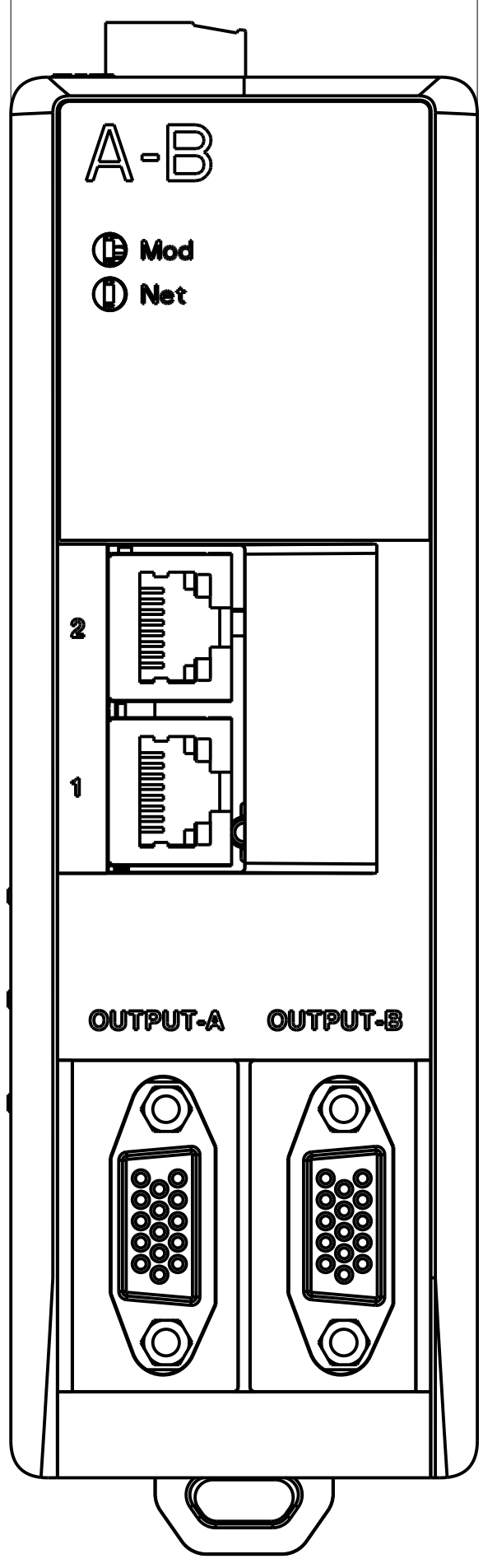
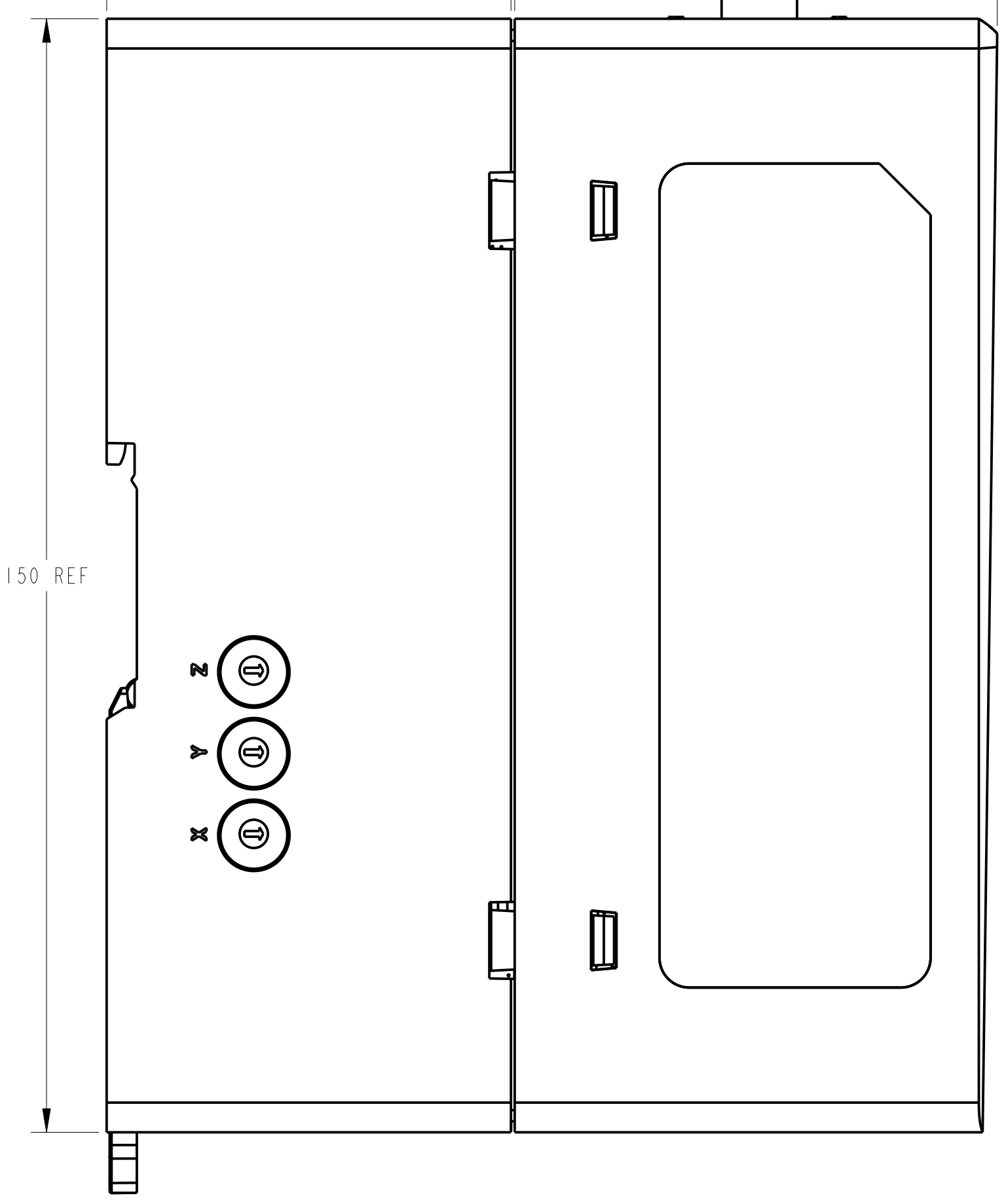
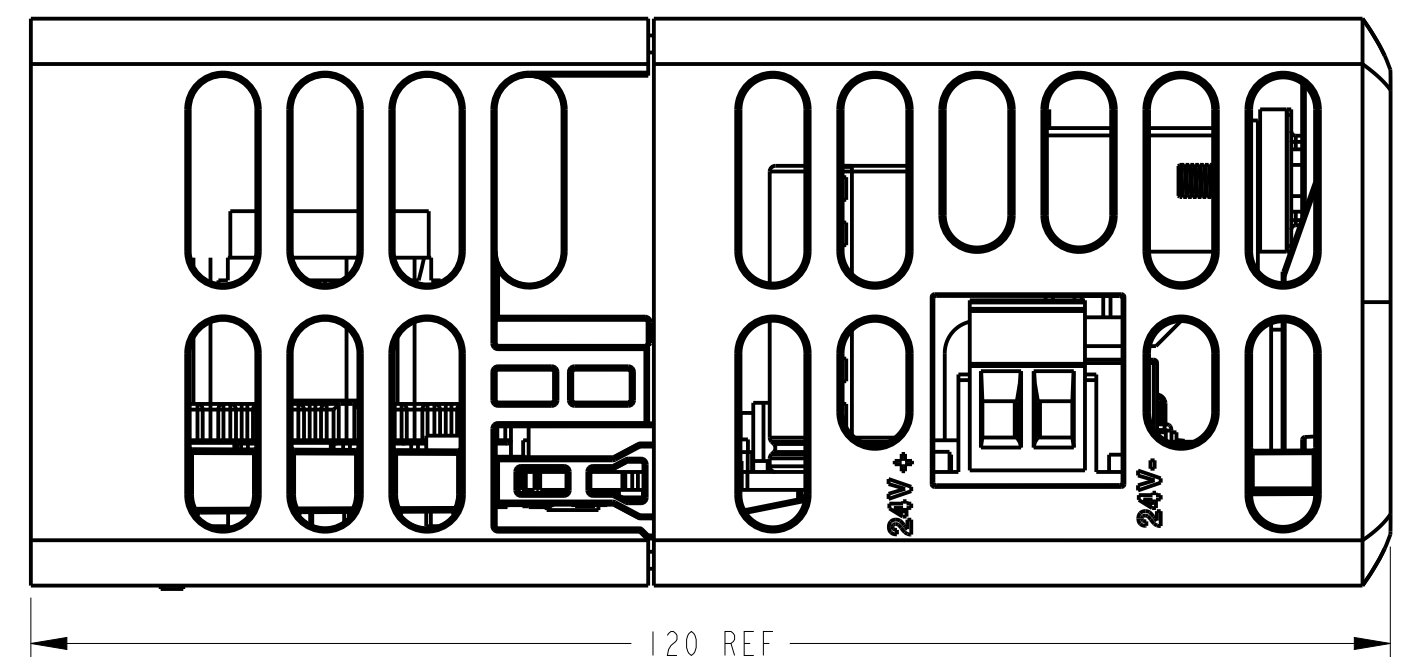
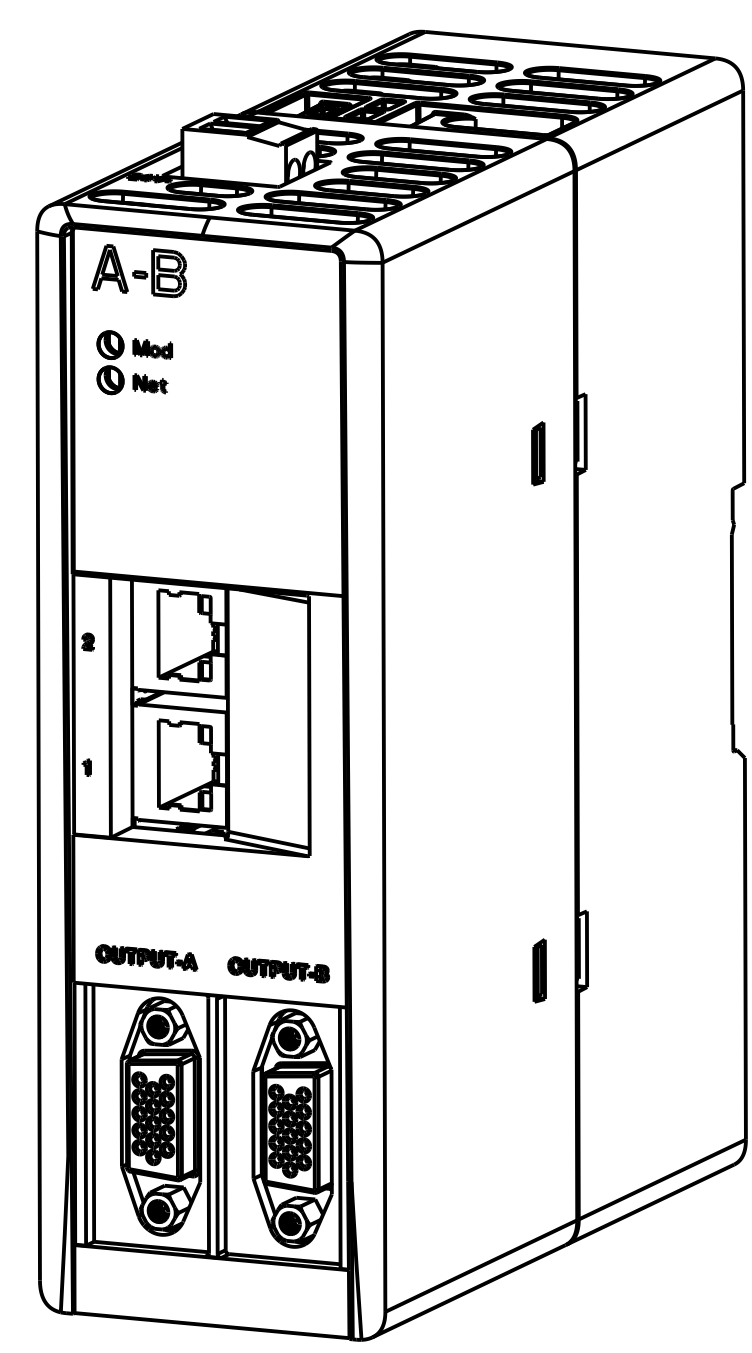


CLASSIFICATION TABLE						
P=PERFORMANCE, F=FIT, A=ASSEMBLY (USE ONLY WITH ◊ SYMBOL)						
X=IDENTIFIES APPLICABLE CLASSIFICATION(S)						
◊=REQUIRED BY ENGINEERING AND/OR MANUFACTURING						
⊙=STRICT CONFORMANCE TO SPECIFICATION REQUIRED AND IS NOT NEGOTIABLE (MAY BE REQUIRED BY REGULATORY AGENCY)						
CHARACTERISTIC -OR- DIMENSION	COMMENT	DRAWING LOCATION (ZONE)	P	F	A	R



SCALE 1.000



SCALE 1.000

NOTE: ALL DIMENSIONS ARE IN MM

PART NUMBER	MODEL DIR
PN-332679	10001861461

		<small>CONFIDENTIAL AND PROPRIETARY INFORMATION. THIS DOCUMENT CONTAINS CONFIDENTIAL AND PROPRIETARY INFORMATION OF ROCKWELL AUTOMATION, INC. AND MAY NOT BE USED, COPIED OR DISCLOSED TO OTHERS, EXCEPT WITH THE AUTHORIZED WRITTEN PERMISSION OF ROCKWELL AUTOMATION, INC.</small>	
		1799 ENCODER OUTPUT EMULATOR ASSEMBLY	Sheet 1 Of 5
Drawn by: SKATAKA	Date: MAR-22-2016	Size D	Ver 10001861462 00

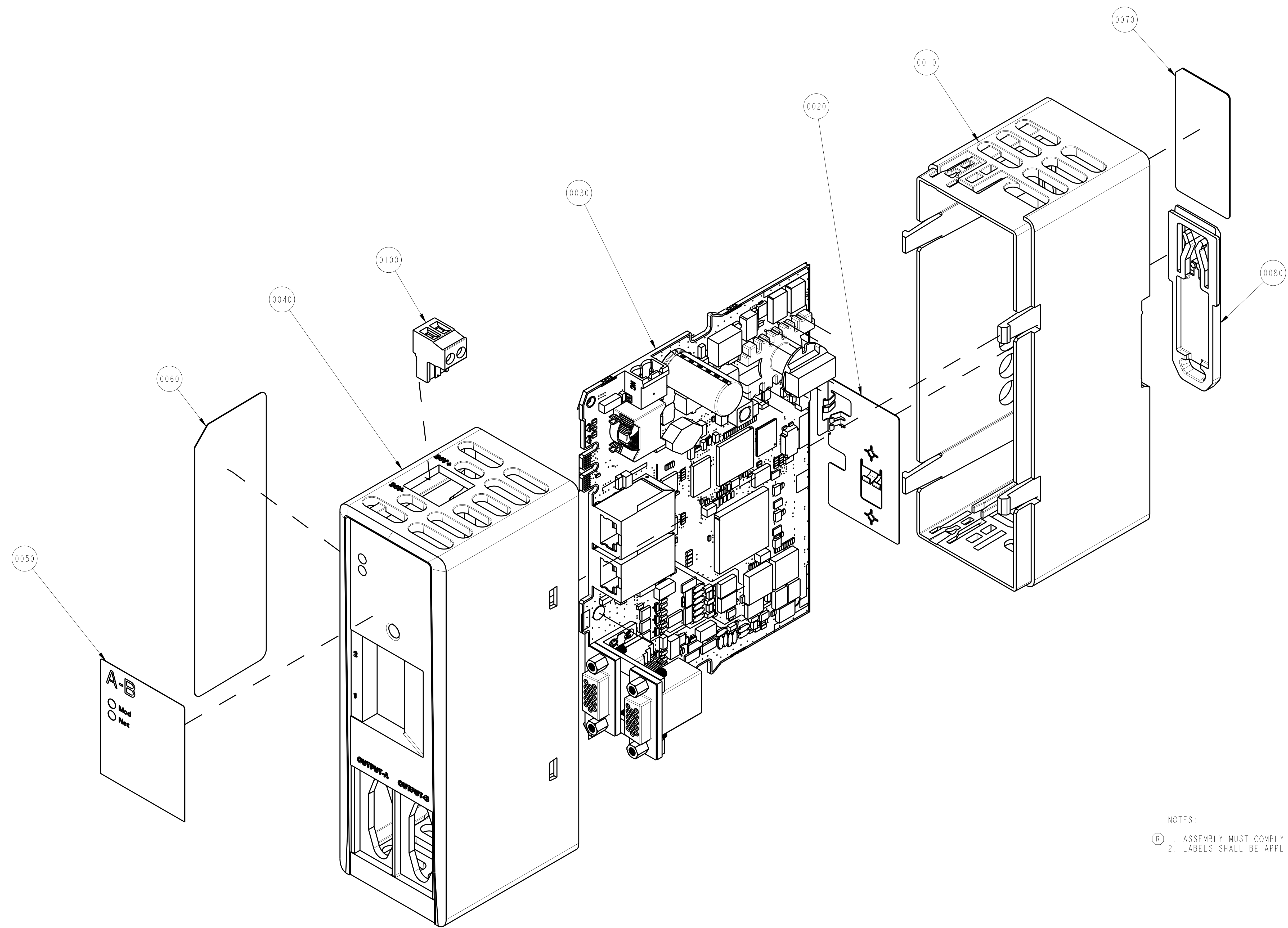
1 2 3 4 5 6 7 8

A
B
C
D
E
F
G
H

CLASSIFICATION TABLE

P=PERFORMANCE, F=FIT, A=ASSEMBLY (USE ONLY WITH Ø SYMBOL)
 X=IDENTIFIES APPLICABLE CLASSIFICATION(S)
 Ø=REQUIRED BY ENGINEERING AND/OR MANUFACTURING
 ⊕=STRICT CONFORMANCE TO SPECIFICATION REQUIRED AND IS NOT NEGOTIABLE (MAY BE REQUIRED BY REGULATORY AGENCY)

CHARACTERISTIC -OR- DIMENSION	COMMENT	DRAWING LOCATION (ZONE)	P	F	A	R
NOTE 1		G6				X



NOTES:

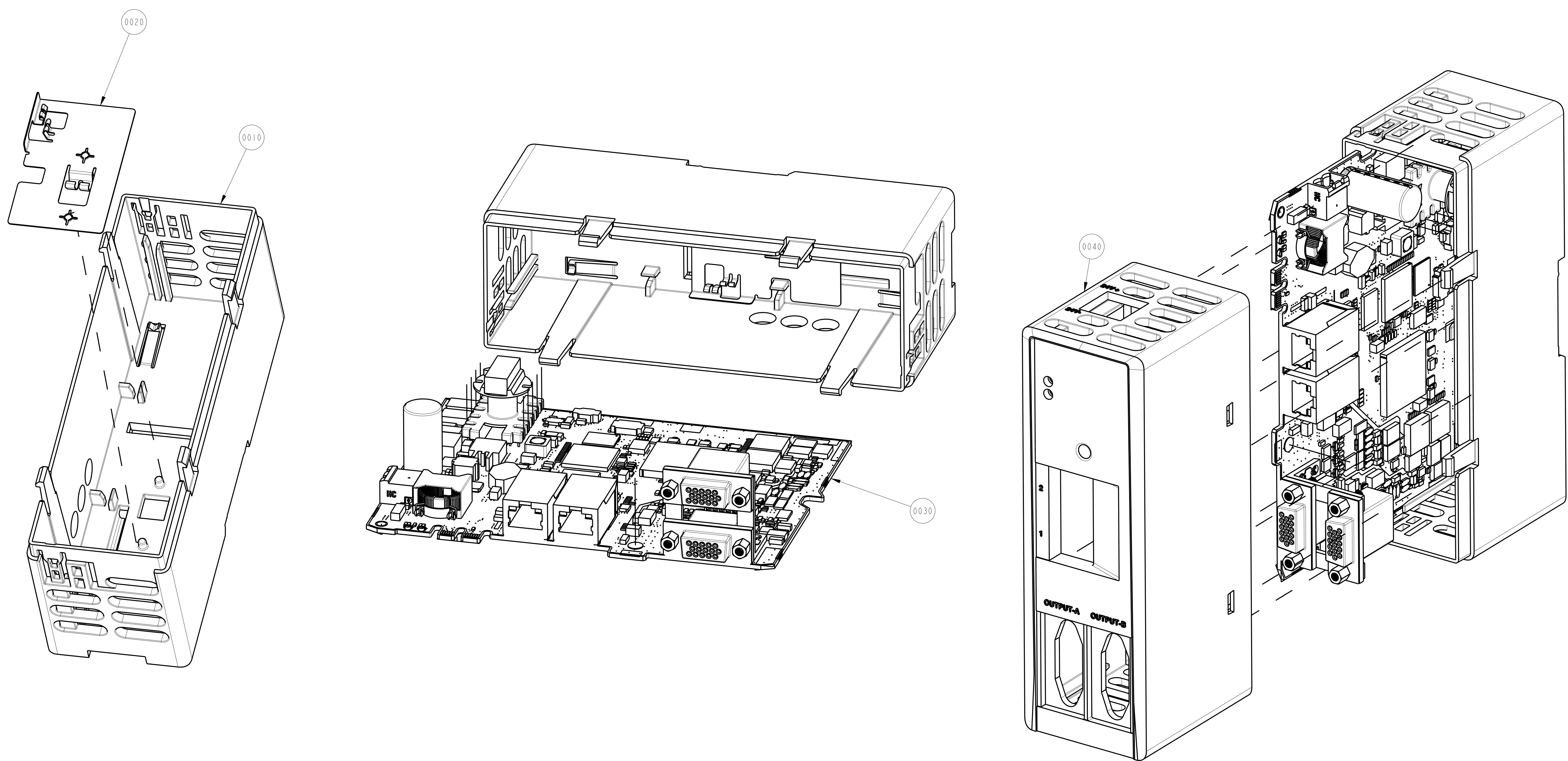
- ① ASSEMBLY MUST COMPLY WITH ROCKWELL AUTOMATION ENVIRONMENT SPECIFICATION 970-20-01.
- ② LABELS SHALL BE APPLIED WITHIN THE BOUNDARIES OF RECESSED AREA.

Rockwell Automation		CONFIDENTIAL AND PROPRIETARY INFORMATION. THIS DOCUMENT CONTAINS CONFIDENTIAL AND PROPRIETARY INFORMATION OF ROCKWELL AUTOMATION, INC. AND MAY NOT BE USED, COPIED OR DISCLOSED TO OTHERS, EXCEPT WITH THE AUTHORIZED WRITTEN PERMISSION OF ROCKWELL AUTOMATION, INC.	
1799 ENCODER OUTPUT EMULATOR ASSEMBLY		Sheet 2 Of 5	
Drawn by: SKATAKA	Date: MAR-22-2016	Size D	Ver 00
		10001861462	

1 2 3 4 5 6 7 8

CLASSIFICATION TABLE						
P=PERFORMANCE, F=FIT, A=ASSEMBLY (USE ONLY WITH Ø SYMBOL) X=IDENTIFIES APPLICABLE CLASSIFICATION(S) Ø=REQUIRED BY ENGINEERING AND/OR MANUFACTURING ⊕=STRICT CONFORMANCE TO SPECIFICATION REQUIRED AND IS NOT NEGOTIABLE (MAY BE REQUIRED BY REGULATORY AGENCY)						
CHARACTERISTIC -OR- DIMENSION	COMMENT	DRAWING LOCATION (ZONE)	P	F	A	R

A
B
C
D
E
F
G
H

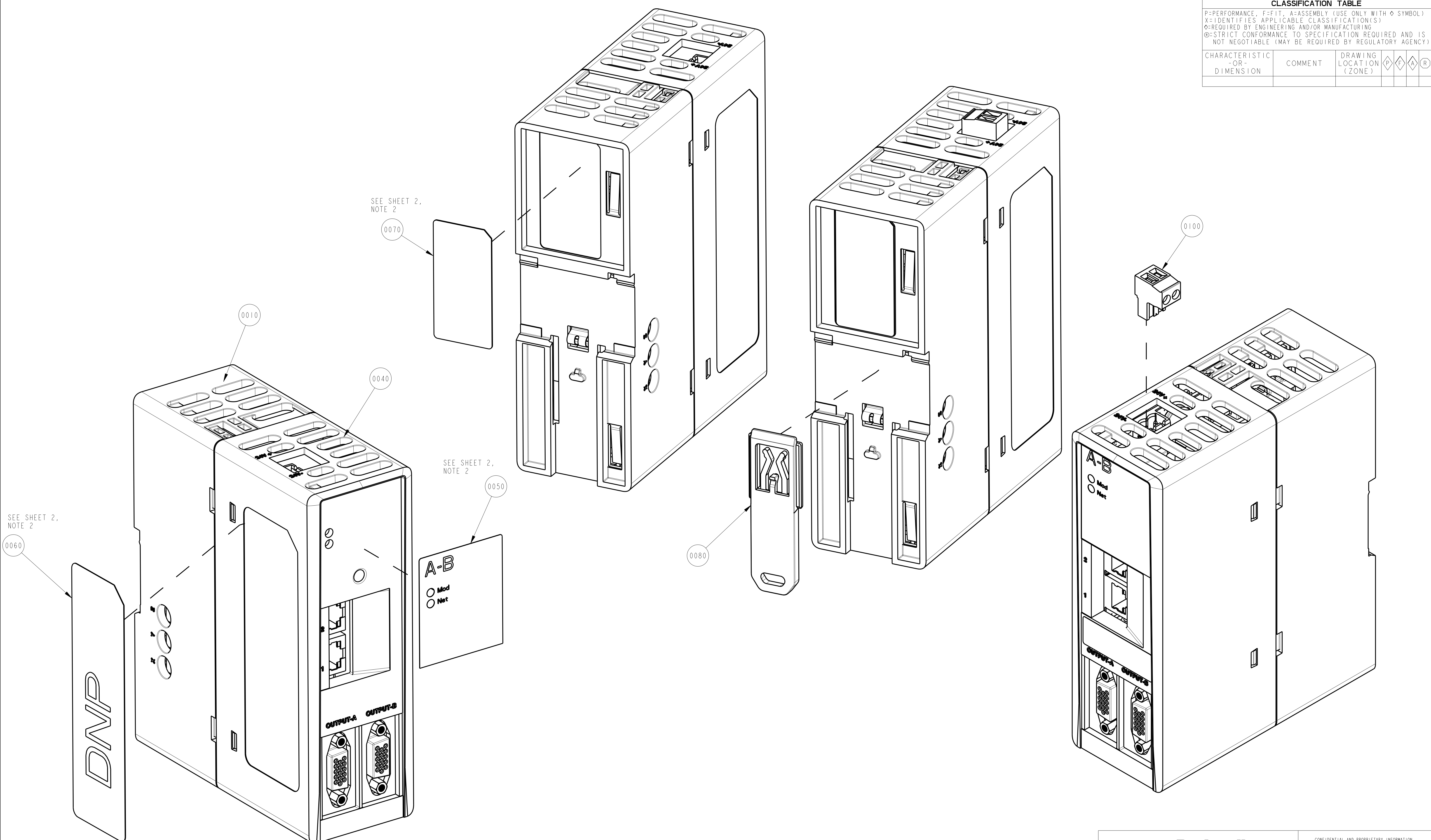


		<small>CONFIDENTIAL AND PROPRIETARY INFORMATION THIS DOCUMENT CONTAINS CONFIDENTIAL AND PROPRIETARY INFORMATION OF ROCKWELL AUTOMATION, INC. AND MAY NOT BE USED, COPIED OR DISCLOSED TO OTHERS, EXCEPT WITH THE AUTHORIZED WRITTEN PERMISSION OF ROCKWELL AUTOMATION, INC.</small>	
		1799 ENCODER OUTPUT EMULATOR ASSEMBLY	Sheet 3 Of 5
Drawn by: SKATAKA	Date: MAR-22-2016	Size D	Ver 1001861462 00

1 2 3 4 5 6 7 8

A
B
C
D
E
F
G
H

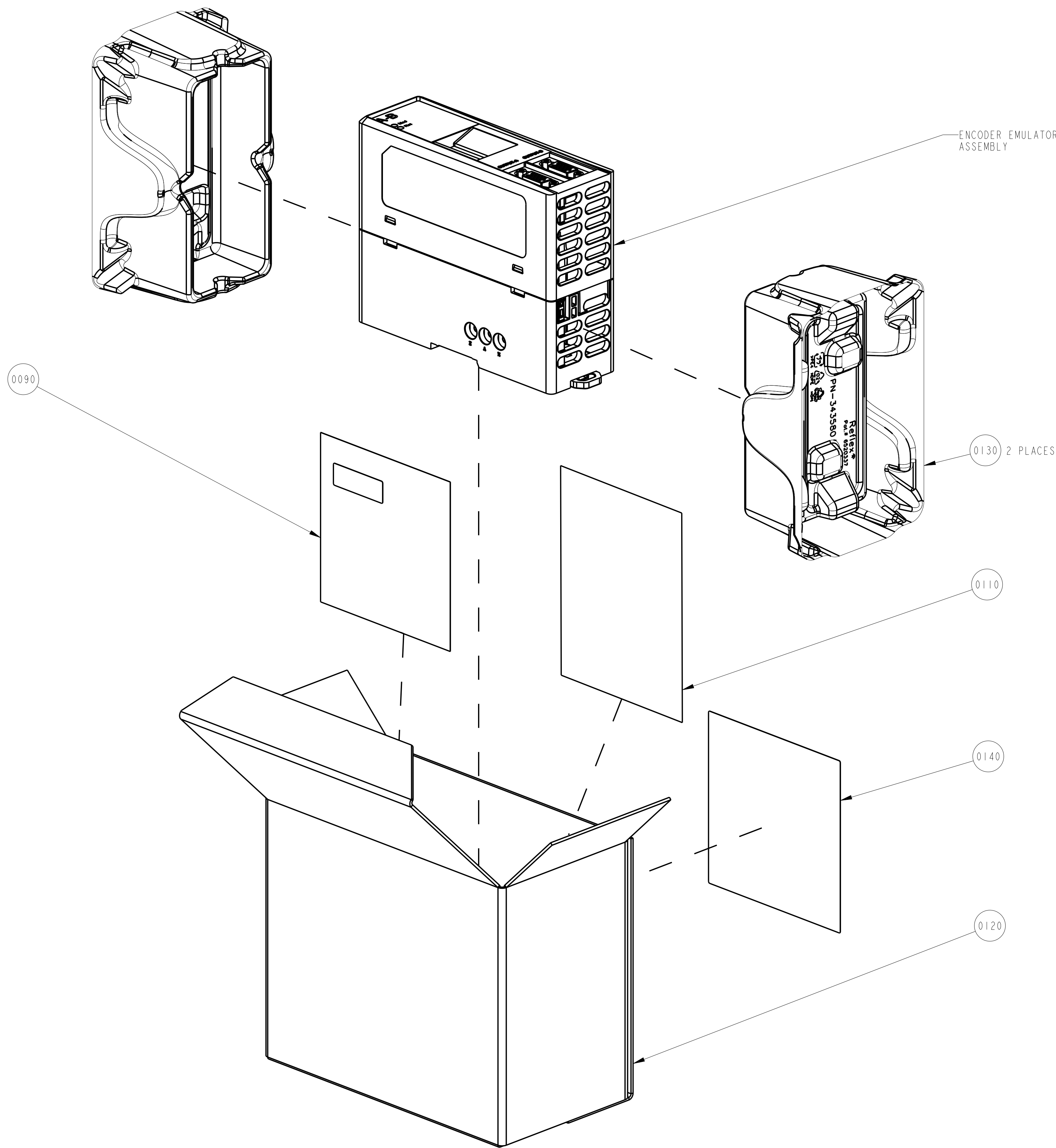
CLASSIFICATION TABLE						
P=PERFORMANCE, F=FIT, A=ASSEMBLY (USE ONLY WITH Ø SYMBOL) X=IDENTIFIES APPLICABLE CLASSIFICATION(S) Ø=REQUIRED BY ENGINEERING AND/OR MANUFACTURING ⊕=STRICT CONFORMANCE TO SPECIFICATION REQUIRED AND IS NOT NEGOTIABLE (MAY BE REQUIRED BY REGULATORY AGENCY)						
CHARACTERISTIC -OR- DIMENSION	COMMENT	DRAWING LOCATION (ZONE)	P	F	A	R



		<small>CONFIDENTIAL AND PROPRIETARY INFORMATION THIS DOCUMENT CONTAINS CONFIDENTIAL AND PROPRIETARY INFORMATION OF ROCKWELL AUTOMATION, INC. AND MAY NOT BE USED, COPIED OR DISCLOSED TO OTHERS, EXCEPT WITH THE AUTHORIZED WRITTEN PERMISSION OF ROCKWELL AUTOMATION, INC.</small>	
		1799 ENCODER OUTPUT EMULATOR ASSEMBLY	Sheet 4 Of 5
Drawn by: SKATAKA	Date: MAR-22-2016	Size D	Ver 1001861462 00

1 2 3 4 5 6 7 8

CLASSIFICATION TABLE						
P=PERFORMANCE, F=FIT, A=ASSEMBLY (USE ONLY WITH Ø SYMBOL) X=IDENTIFIES APPLICABLE CLASSIFICATION(S) Ø=REQUIRED BY ENGINEERING AND/OR MANUFACTURING ⊕=STRICT CONFORMANCE TO SPECIFICATION REQUIRED AND IS NOT NEGOTIABLE (MAY BE REQUIRED BY REGULATORY AGENCY)						
CHARACTERISTIC -OR- DIMENSION	COMMENT	DRAWING LOCATION (ZONE)	P	F	A	R



SCALE 0.750

		<small>CONFIDENTIAL AND PROPRIETARY INFORMATION THIS DOCUMENT CONTAINS CONFIDENTIAL AND PROPRIETARY INFORMATION OF ROCKWELL AUTOMATION, INC. AND MAY NOT BE USED, COPIED OR DISCLOSED TO OTHERS, EXCEPT WITH THE AUTHORIZED WRITTEN PERMISSION OF ROCKWELL AUTOMATION, INC.</small>	
		1799 ENCODER OUTPUT EMULATOR ASSEMBLY	Sheet 5 Of 5
Drawn by: SKATAKA	Date: MAR-22-2016	D	10001861462
			Ver 00

A
B
C
D
E
F
G
H