

Date of Issue: May 8, 2023

OMRON CORPORATION
OMRON SWITCH & DEVICES Corporation

Product outline drawing

Handled by

Distribution	Copy
Customer	
Sales ()	

OMRON

Terms and Conditions Agreement

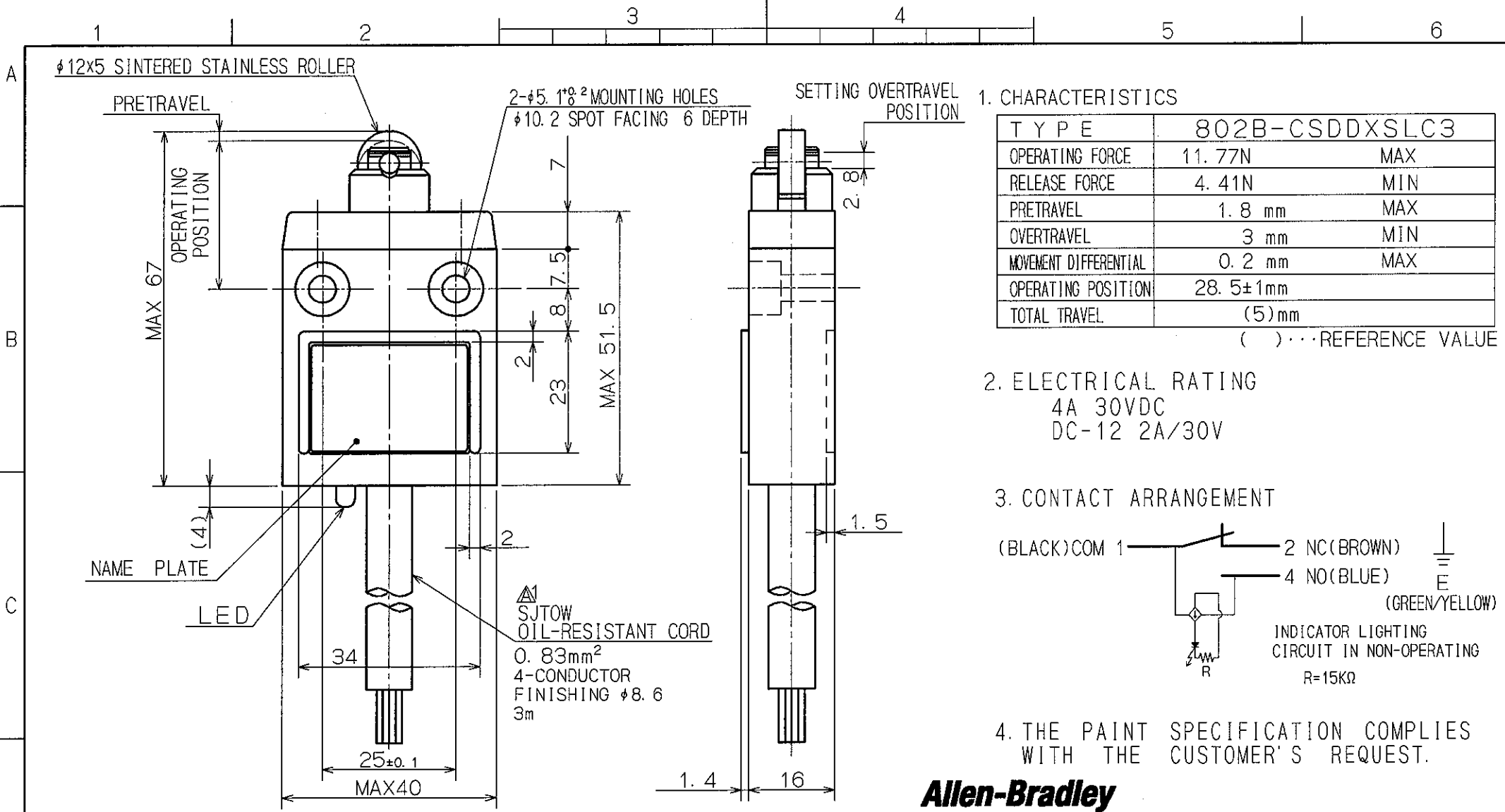
The *Omron* products are designed and manufactured as general-purpose products for use in general industrial applications. They are not intended to be used in the following critical applications. If you are using the products in the following applications, *Omron* shall not provide any warranty for such the products, unless otherwise specifically agreed or unless the specific applications are intended by *Omron*.

- (a) Applications with stringent safety requirements, including but not limited to nuclear power control equipment, combustion equipment, aerospace equipment, vehicles, railway equipment, elevator/lift equipment, amusement park equipment, medical equipment, safety devices and other applications that could cause danger/harm to people's body and life.
- (b) Applications that require high reliability, including but not limited to supply systems for gas, water and electricity, etc., 24 hour continuous operating systems, financial settlement systems and other applications that handle rights and property.
- (c) Applications under severe condition or in severe environment, including but not limited to outdoor equipment, equipment exposed to chemical contamination, equipment exposed to electromagnetic interference and equipment exposed to vibration and shocks
- (d) Applications under conditions and environment not described in *Catalogues*

Please understand the following points if there are descriptions of rating, performance, etc.

- (a) Rated values and performance values are the product of tests performed for separate single conditions, including but not limited to temperature and humidity. *Omron* does not warrant rated values and performance values for multiple combined conditions.
- (b) Reference data are provided for reference only. *Omron* does NOT warrant that the products work properly at all times in the range of reference data.
- (c) *Omron* may discontinue the production of the products or change the specifications of them for the purpose of improving such products or other reasons entirely at its own discretion.

The above are some of the conditions for fit application. Before using the product, please understand the information on warranty and limitation of liability described on the latest version of the catalogues, including those on Omron website, general catalogues and data sheets, as well as manuals.



1. CHARACTERISTICS

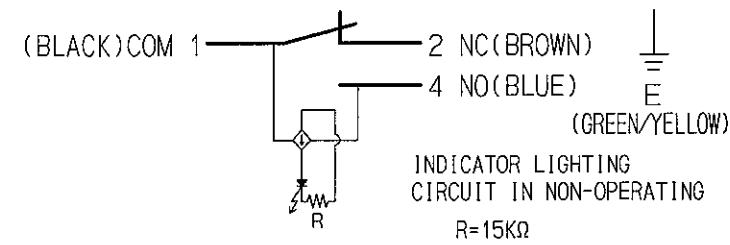
TYPE	802B-CSDDXSLC3	
OPERATING FORCE	11.77N	MAX
RELEASE FORCE	4.41N	MIN
PRETRAVEL	1.8 mm	MAX
OVERTRAVEL	3 mm	MIN
MOVEMENT DIFFERENTIAL	0.2 mm	MAX
OPERATING POSITION	28.5 ± 1 mm	
TOTAL TRAVEL	(5)mm	

()...REFERENCE VALUE

2. ELECTRICAL RATING

4A 30VDC
DC-12 2A/30V

3. CONTACT ARRANGEMENT



4. THE PAINT SPECIFICATION COMPLIES WITH THE CUSTOMER'S REQUEST.

Allen-Bradley

					MATERIAL	SCALE		TYPE 802B-CSDDXSLC3		
					FINISH	1:1		COMPACT LIMIT SWITCH		
					TOLERANCES UNLESS SPECIFIED	DESIGNED FEB. 07. '01	CHECKED	APPROVED Mar. 7. '01	OUTLINE DRAWING	
A1	Mar. 05. 01	CHANGE OF CORD	# 4010036	M. KODANI	± 0.4	M. KODANI		3RD ANGLE	DRWG NO. 7452780-3 A1	
SYM	DATE	E/C CONTENTS	E/C NO.	SIGN				SHEET 1/1	DESIGNED FOR D4C-3R02-RA	