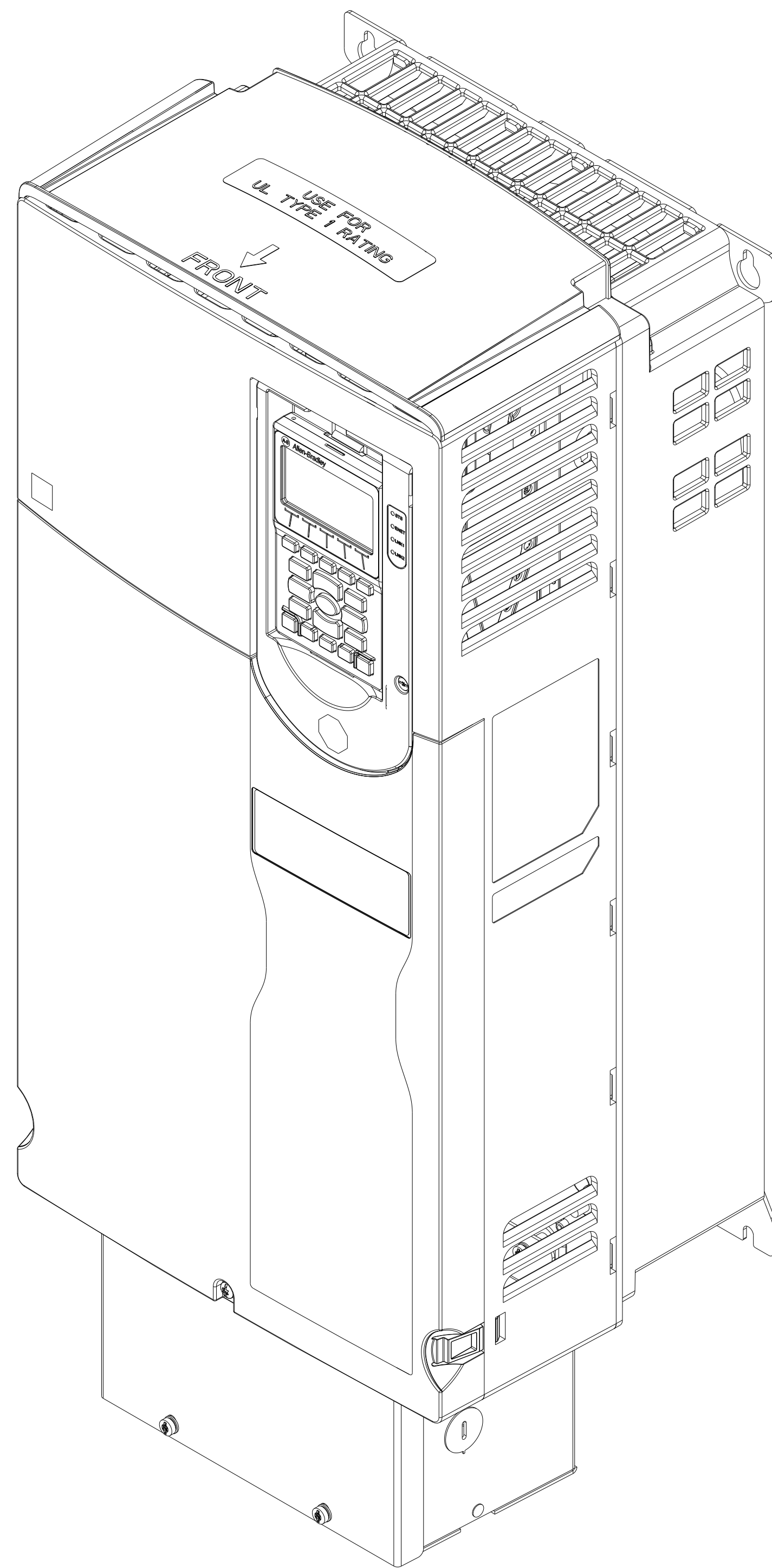
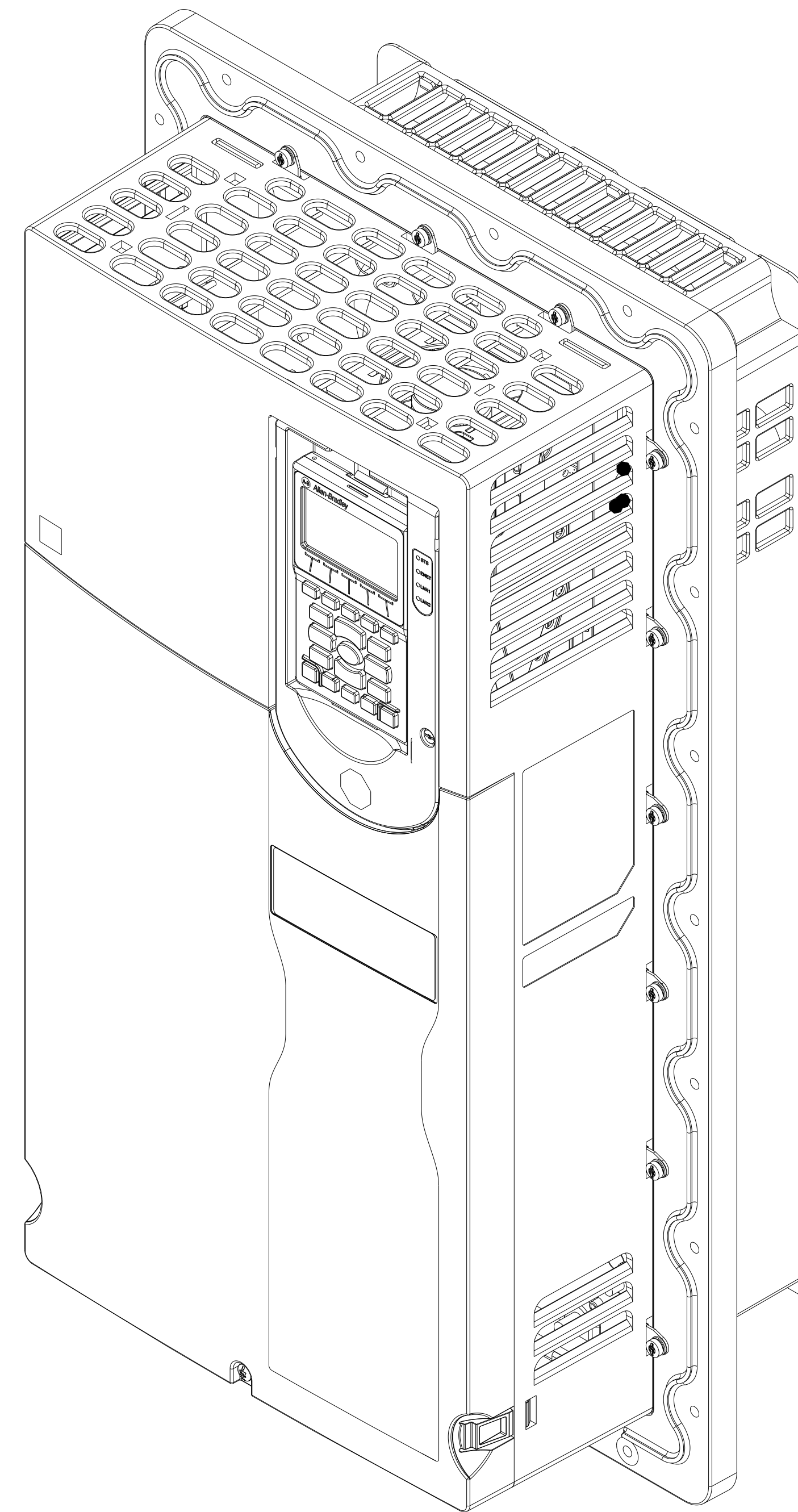


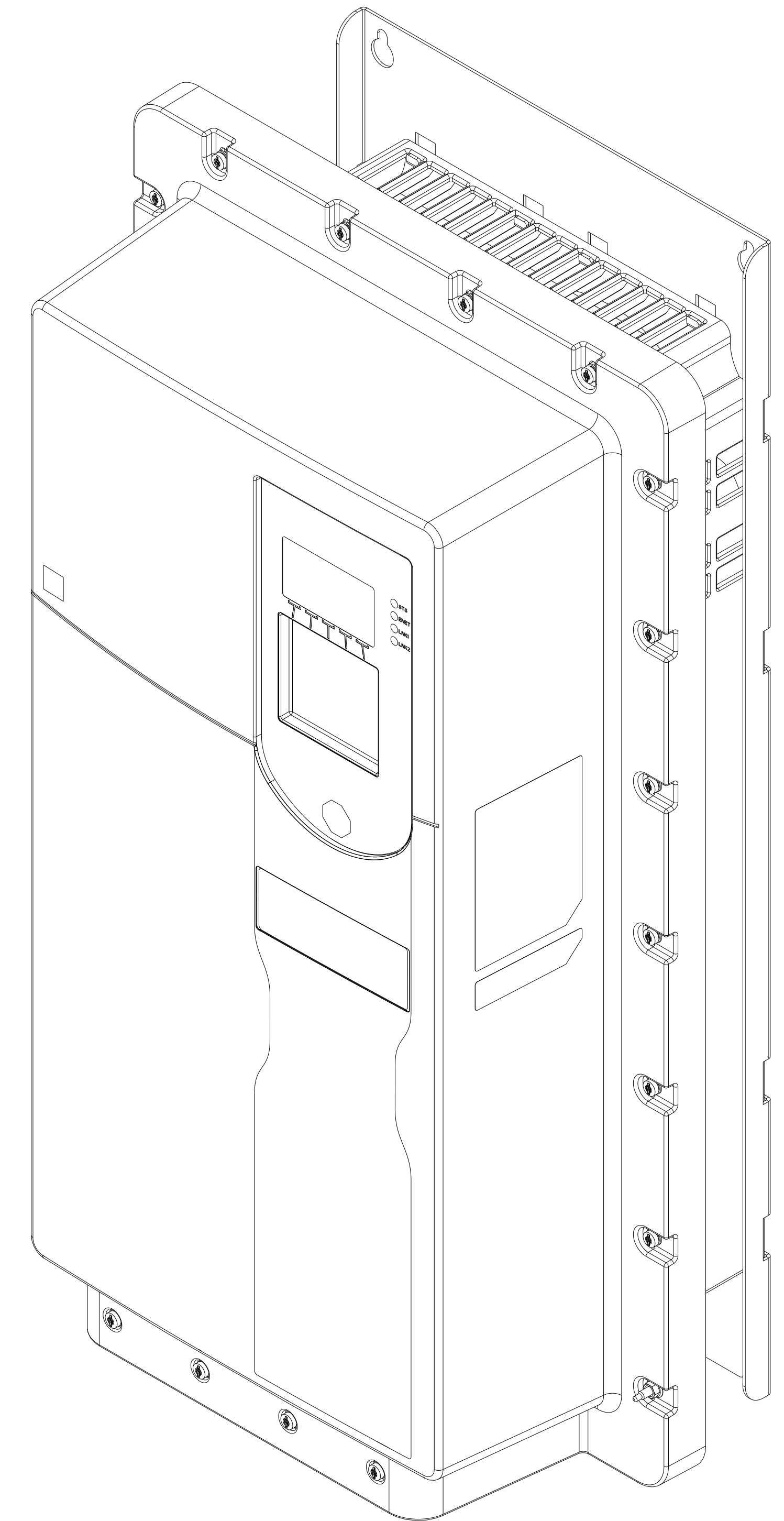
OPEN DRIVE



TYPE 1 DRIVE
AFTER INSTALLATION
OF THE TYPE 1 KIT



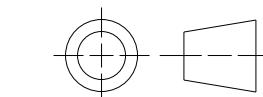
**TYPE 4X
FLANGE DRIVE**



TYPE 12 DRIVE

ALL UNDIMENSIONED GEOMETRIES ARE CONTROLLED BY THE CAD MODEL. IN CASE OF DIMENSION DISCREPANCY, CAD MODEL OVERRIDES.

THIRD ANGLE PROJECTION



STANDARD-SUBMITTAL PF755TS F-5

CREATED BY: NDELEO

CHANGED BY: BMACURA

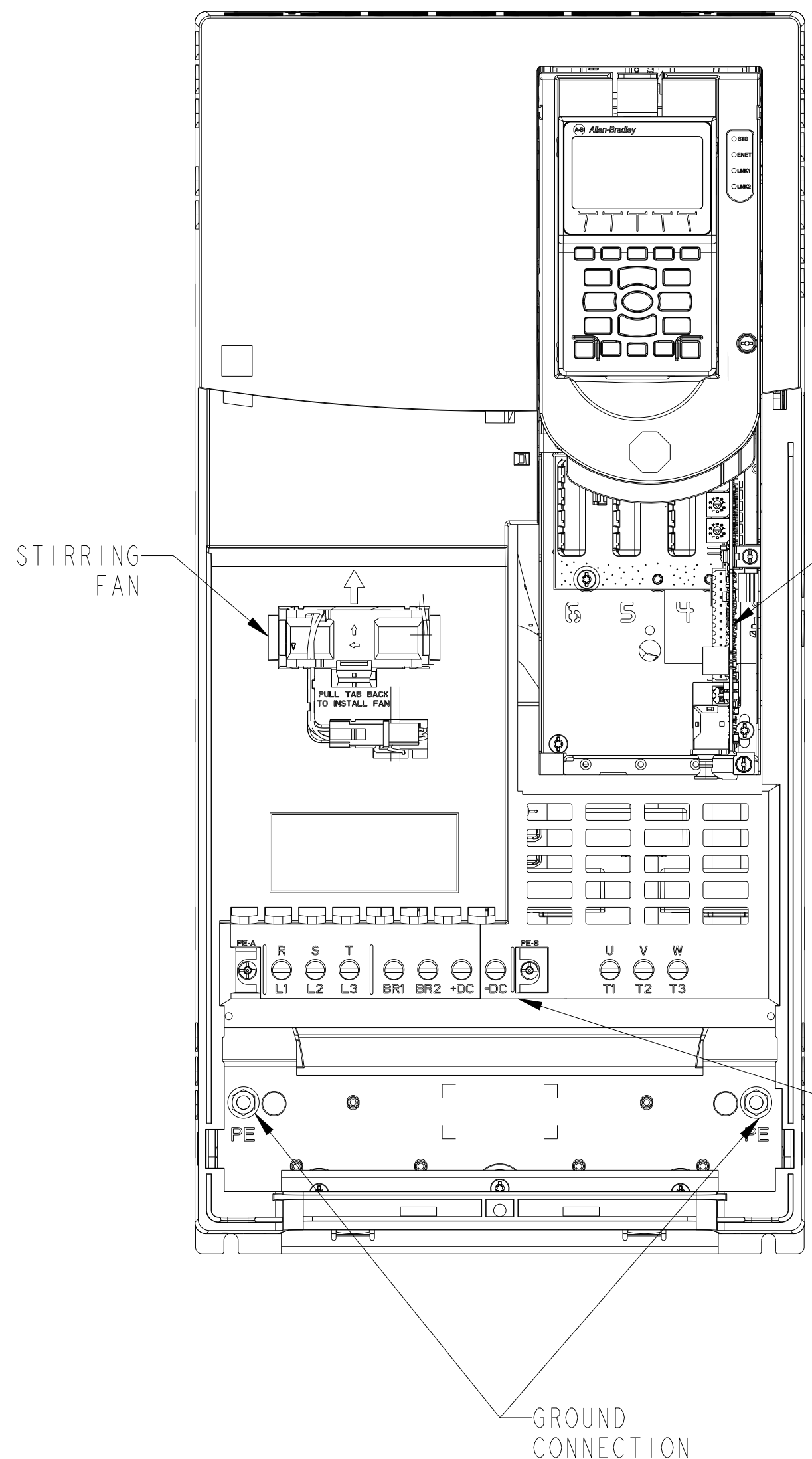
CONFIDENTIAL AND PROPRIETARY INFORMATION. THIS DOCUMENT CONTAINS CONFIDENTIAL AND PROPRIETARY INFORMATION OF ROCKWELL AUTOMATION, INC. AND MAY NOT BE USED, COPIED OR DISCLOSED TO OTHERS, EXCEPT WITH THE AUTHORIZED WRITTEN PERMISSION OF ROCKWELL AUTOMATION, INC.

DATE: 2022-04-21 SHEET 1 OF 5

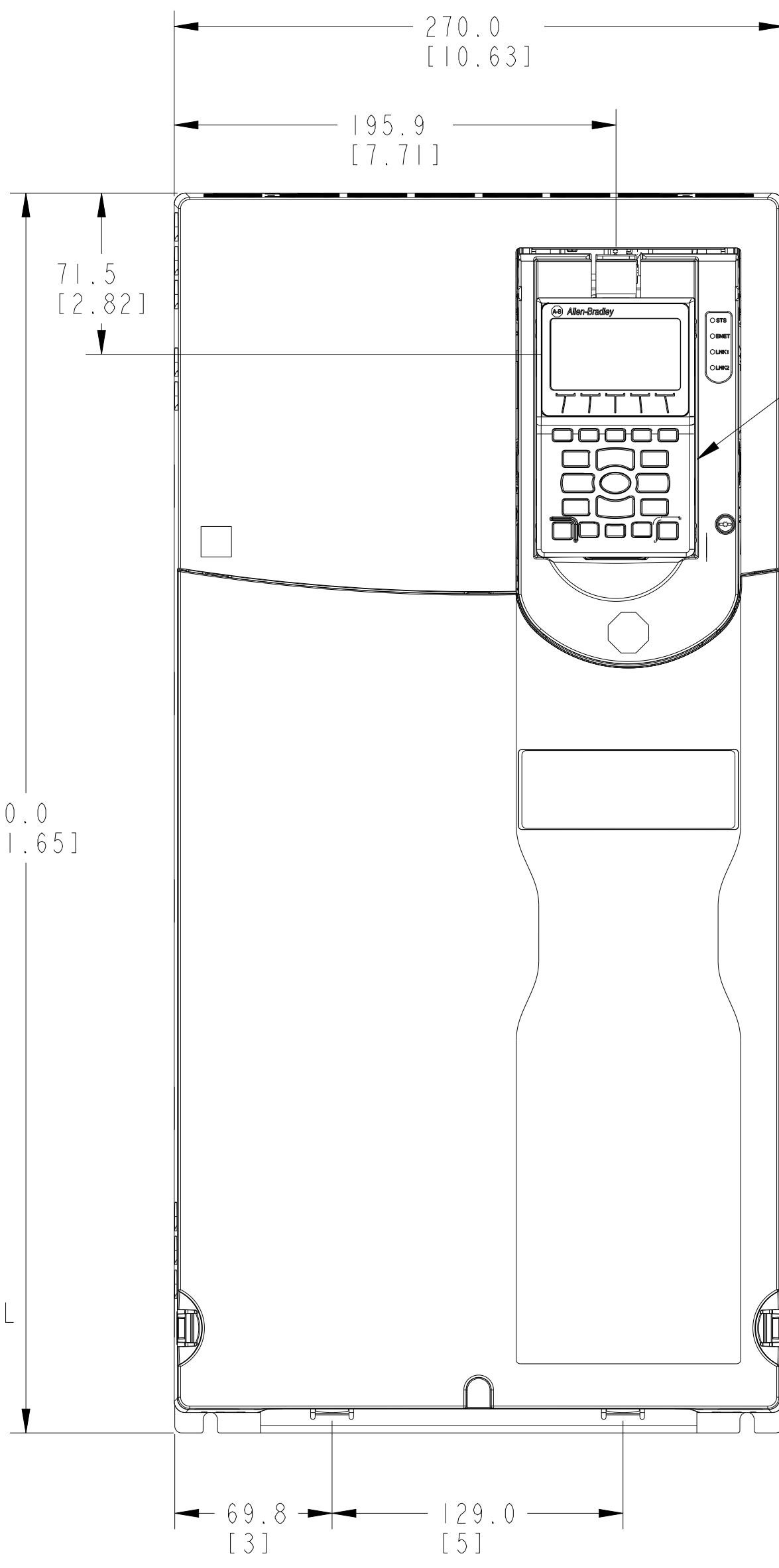
SIZE D1R VER

D 10005343992 03

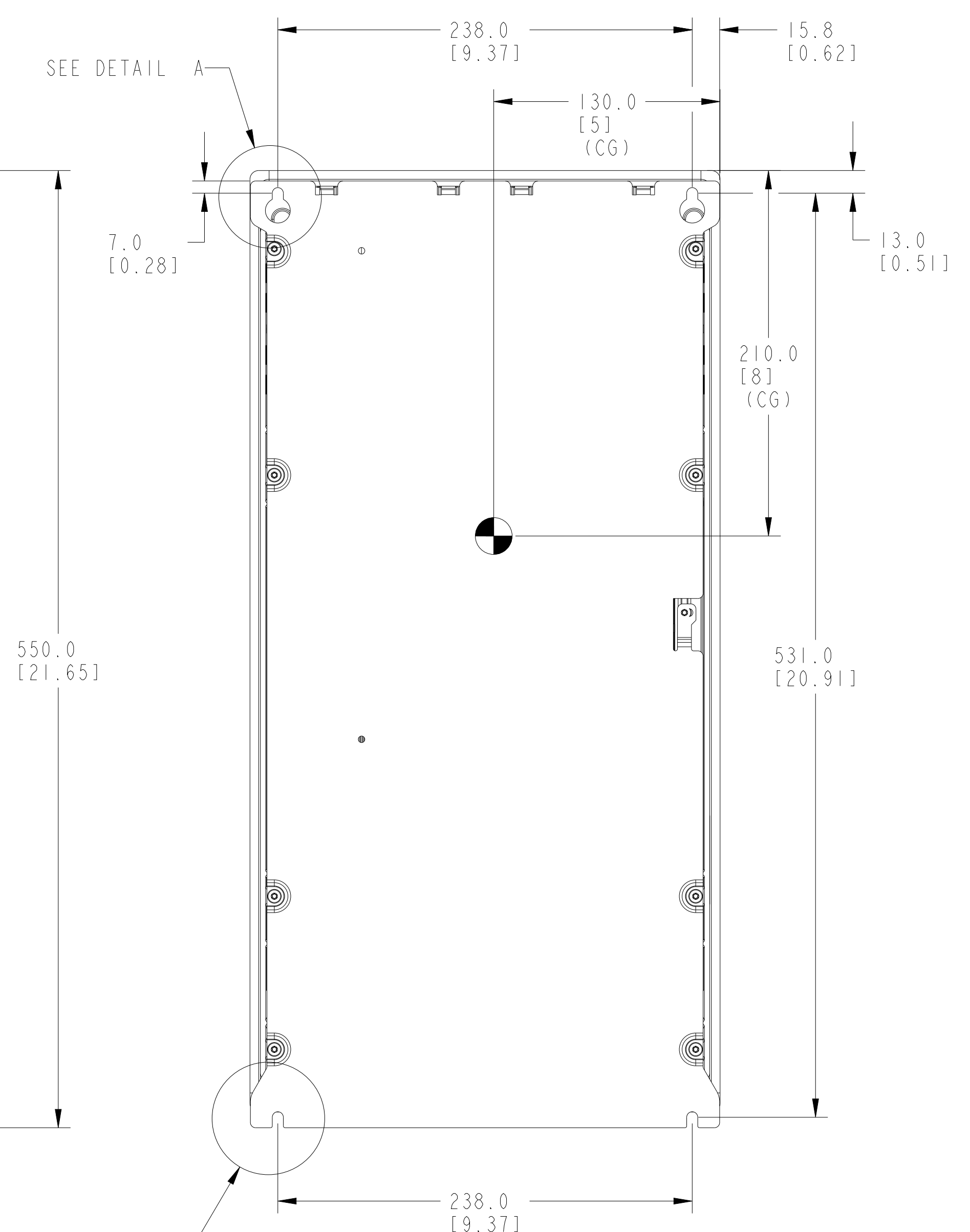
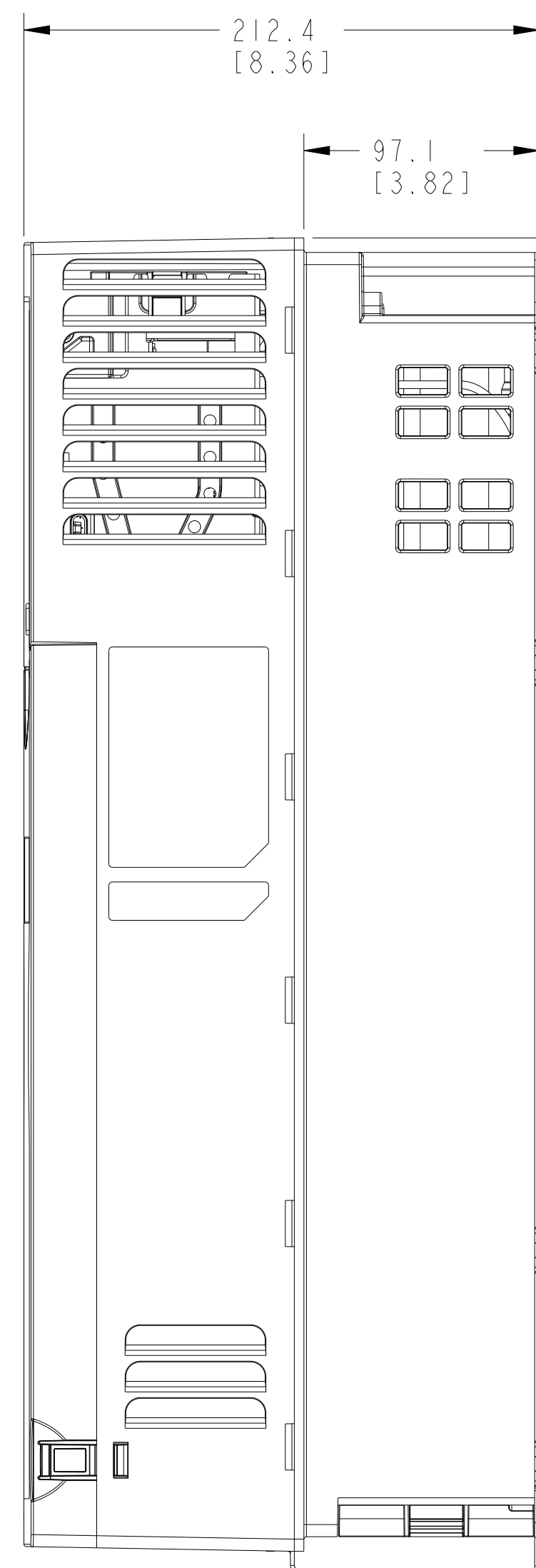
OPEN DRIVE



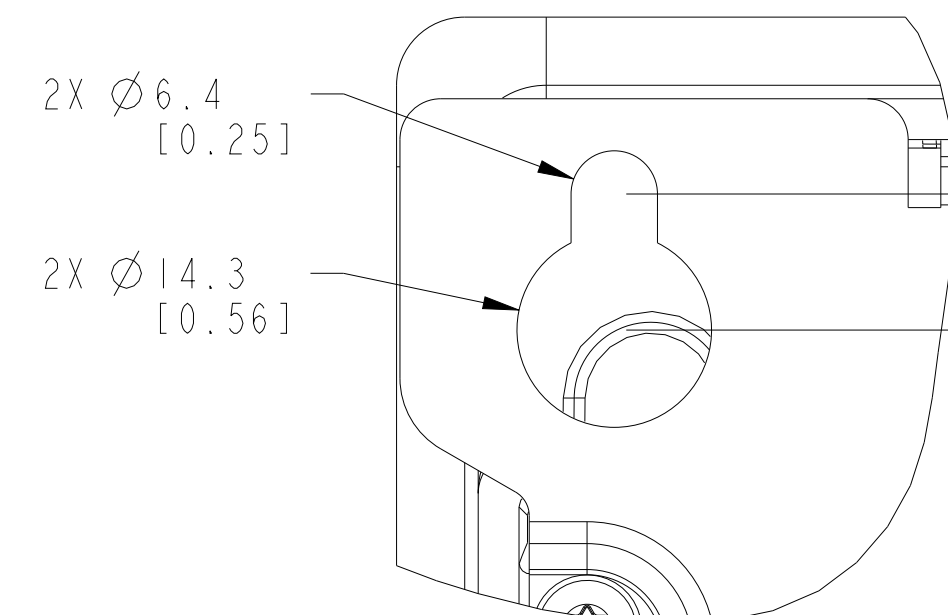
DRIVE COVER REMOVED



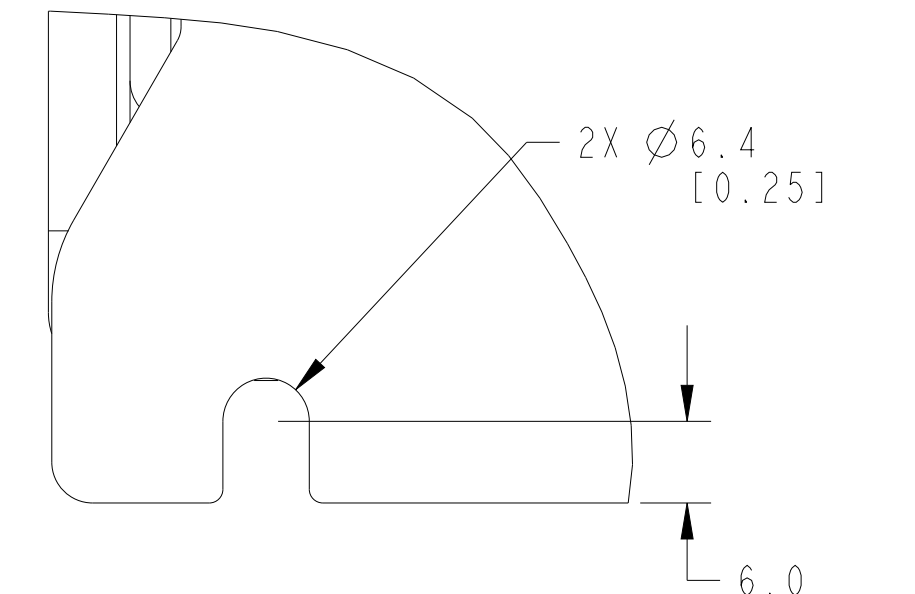
HUMAN INTERFACE MODULE (HIM) OPTIONAL



MOUNTING HOLE LOCATION



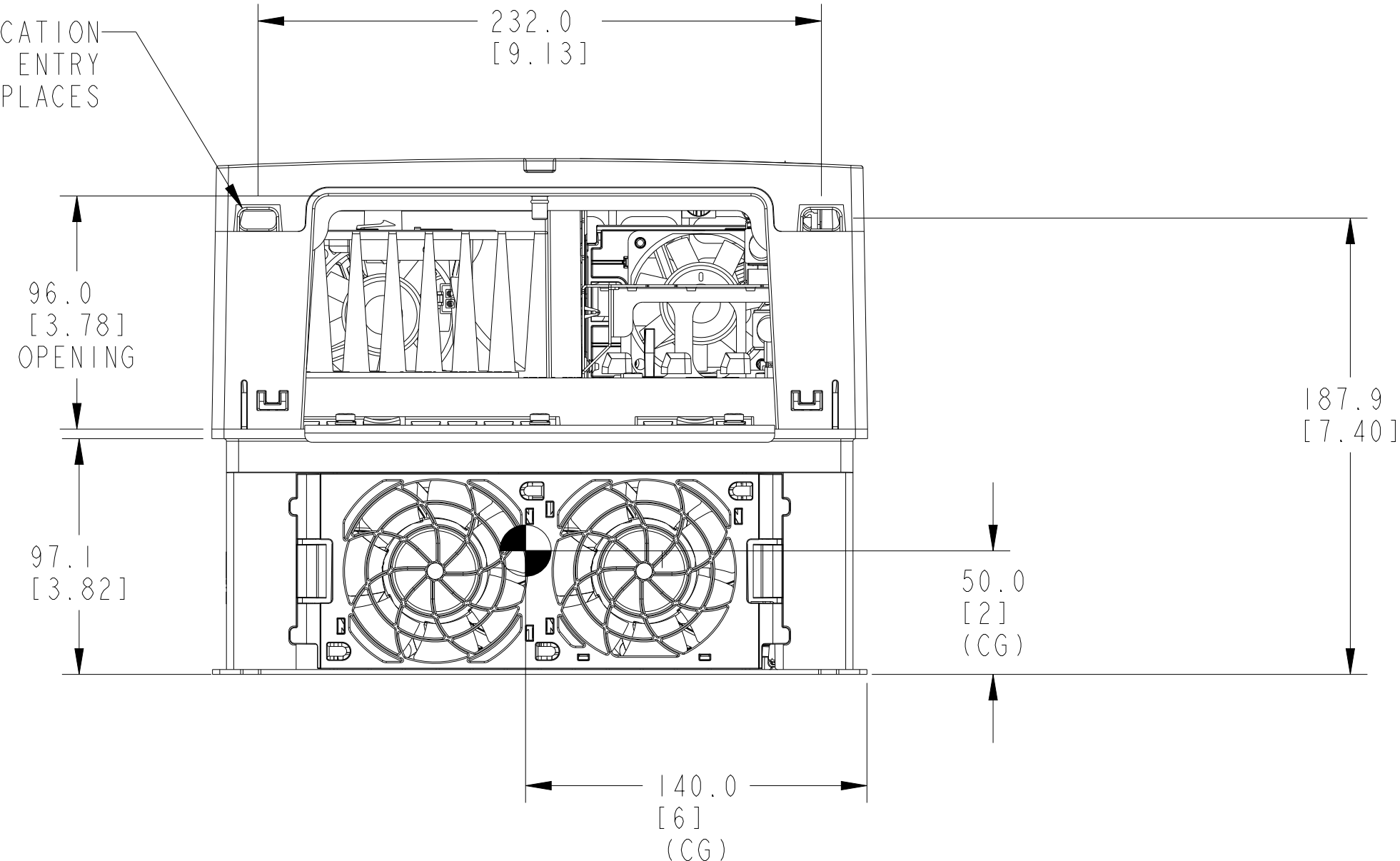
DETAIL A



DETAIL B

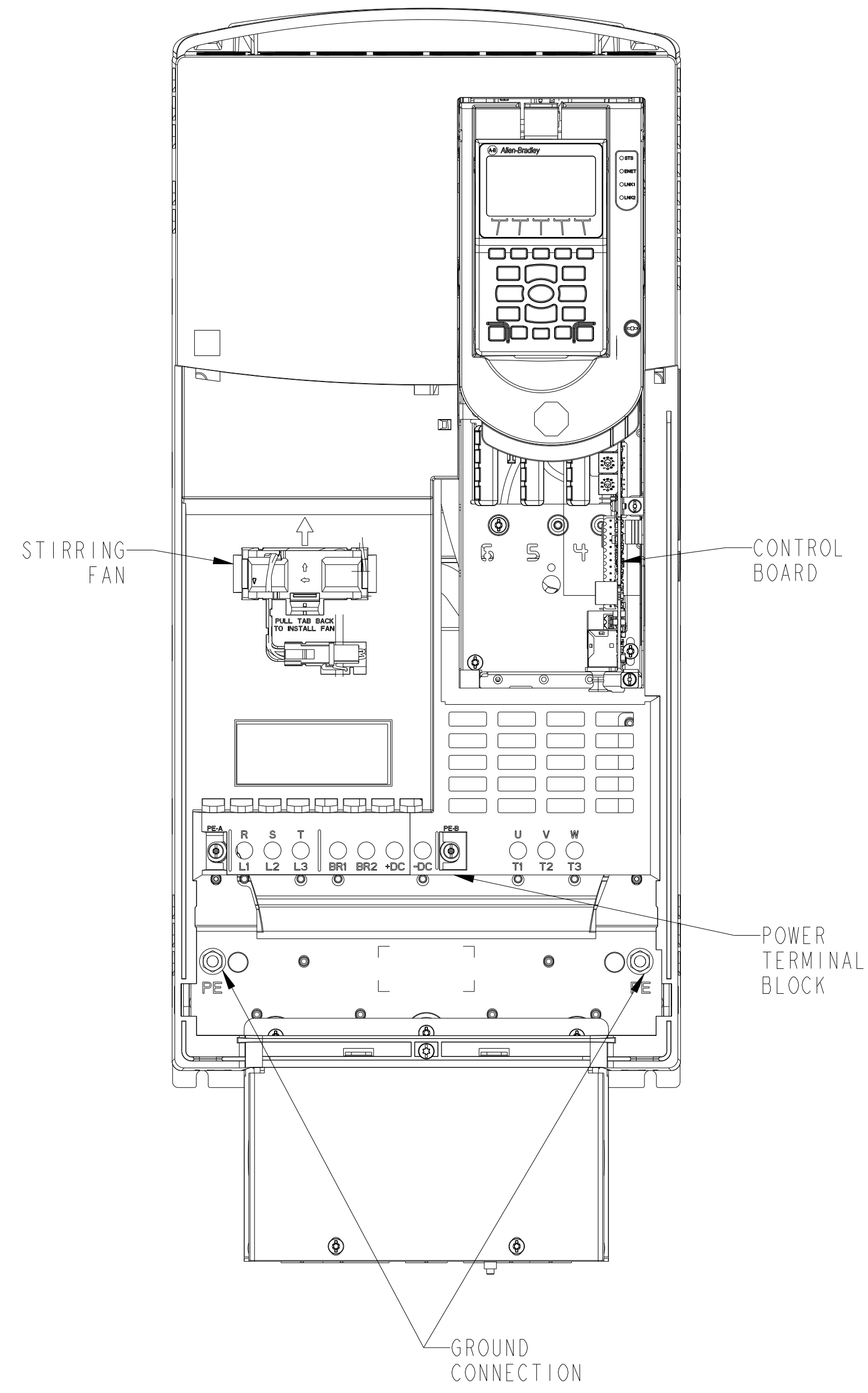
NOTES:

1. DIMENSIONS WITH "CG" REPRESENT THE CENTER OF GRAVITY LOCATION.

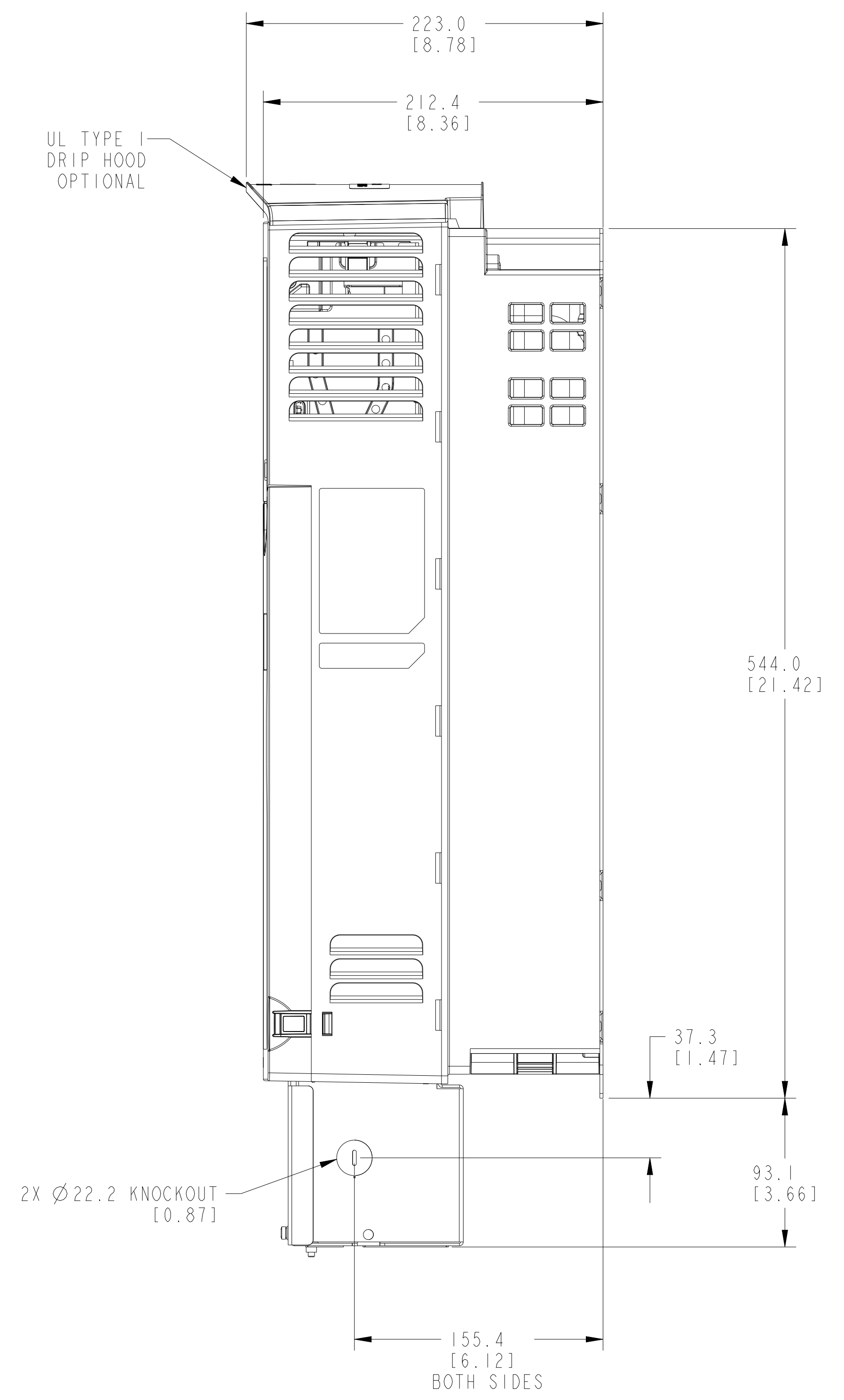
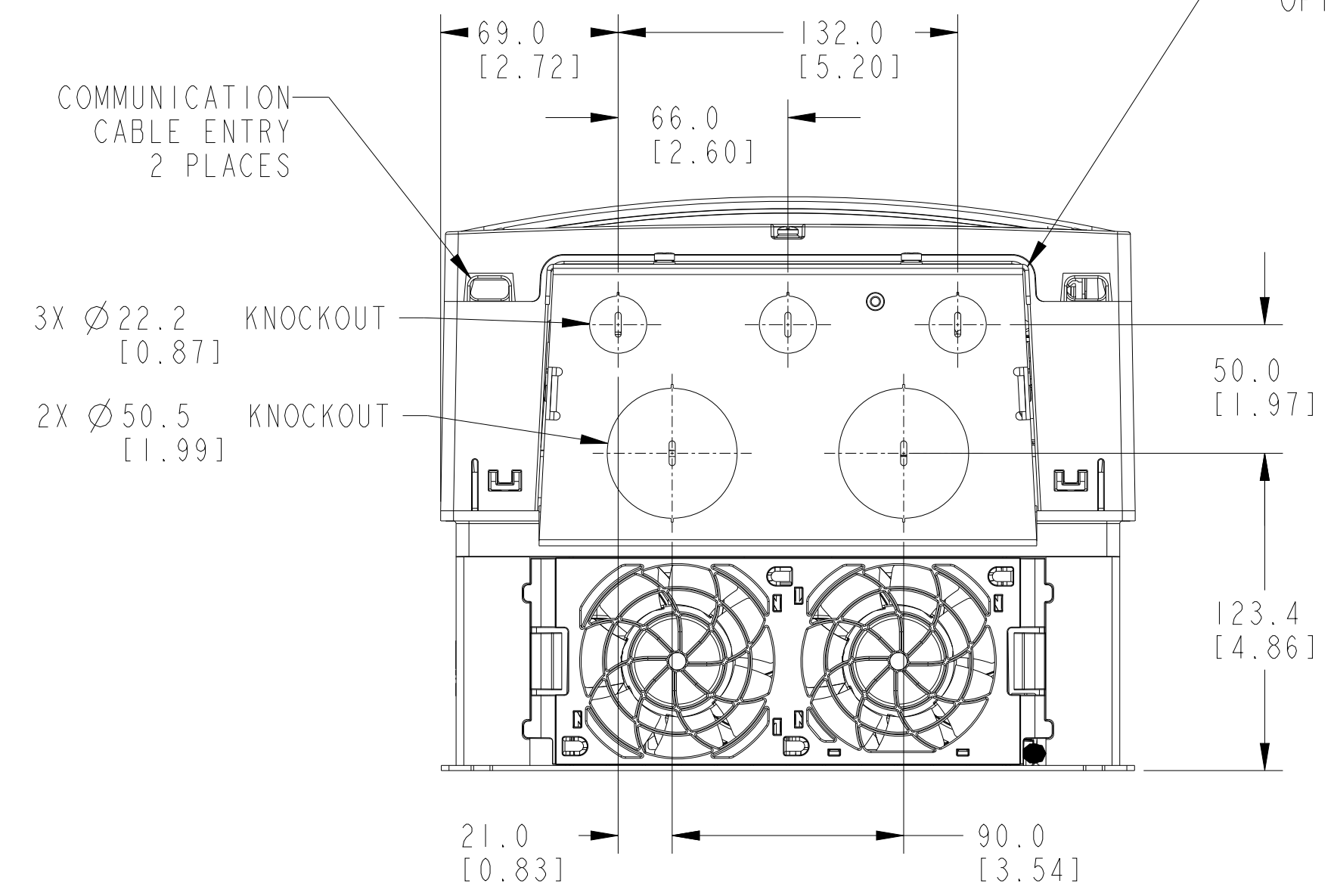
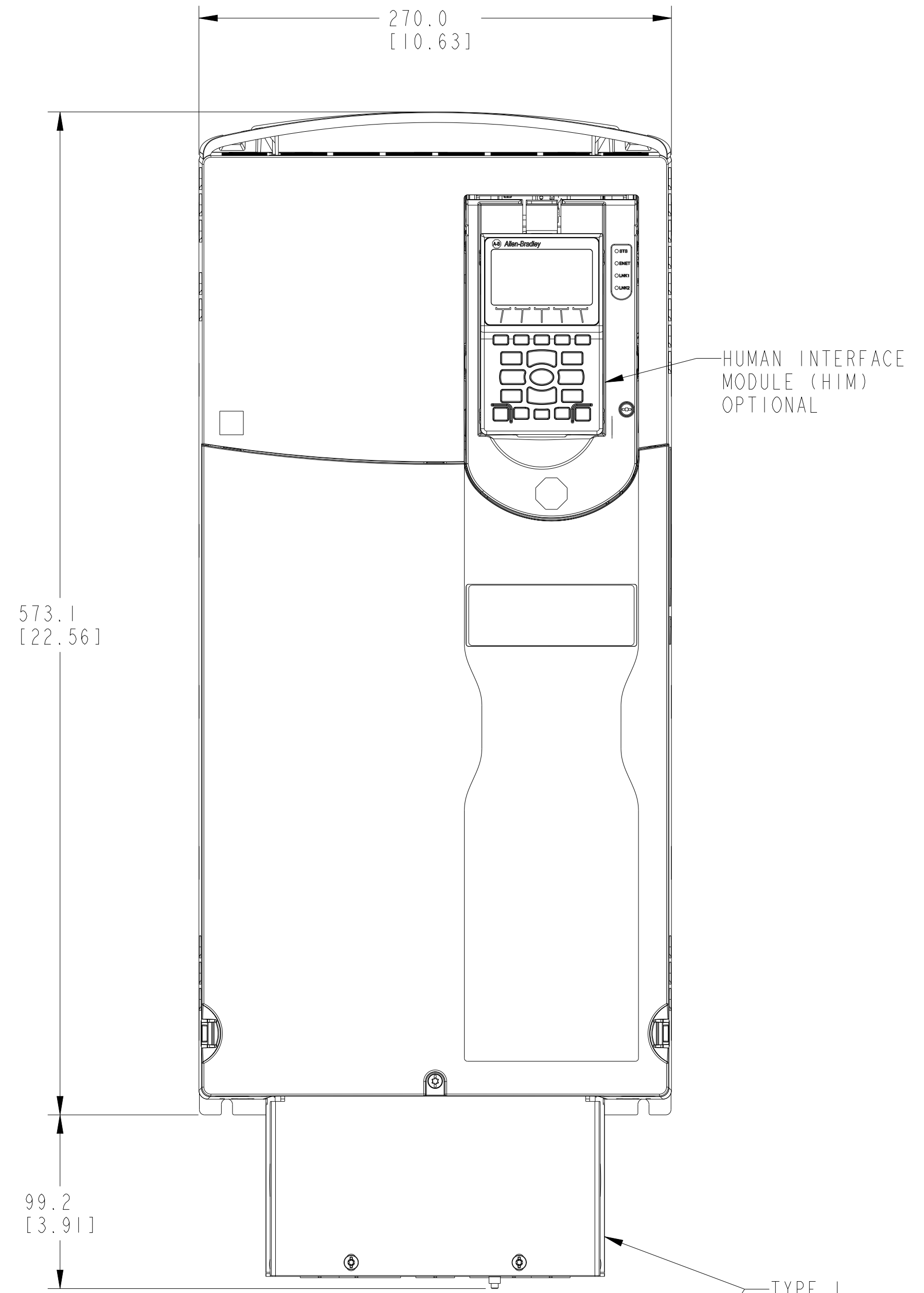


		<small>CONFIDENTIAL AND PROPRIETARY INFORMATION. THIS DOCUMENT CONTAINS CONFIDENTIAL AND PROPRIETARY INFORMATION OF ROCKWELL AUTOMATION, INC. AND MAY NOT BE USED, COPIED OR DISCLOSED TO OTHERS, EXCEPT WITH THE AUTHORIZED WRITTEN PERMISSION OF ROCKWELL AUTOMATION, INC.</small>	
		DATE: 2022-04-21	SHEET 2 OF 5
DESCRIPTION	STANDARD-SUBMITTAL PF755TS F-5	SIZE	D1R
CREATED BY: NDELEO	CHANGED BY: BMACURA	D	10005343992
			03

TYPE I DRIVE

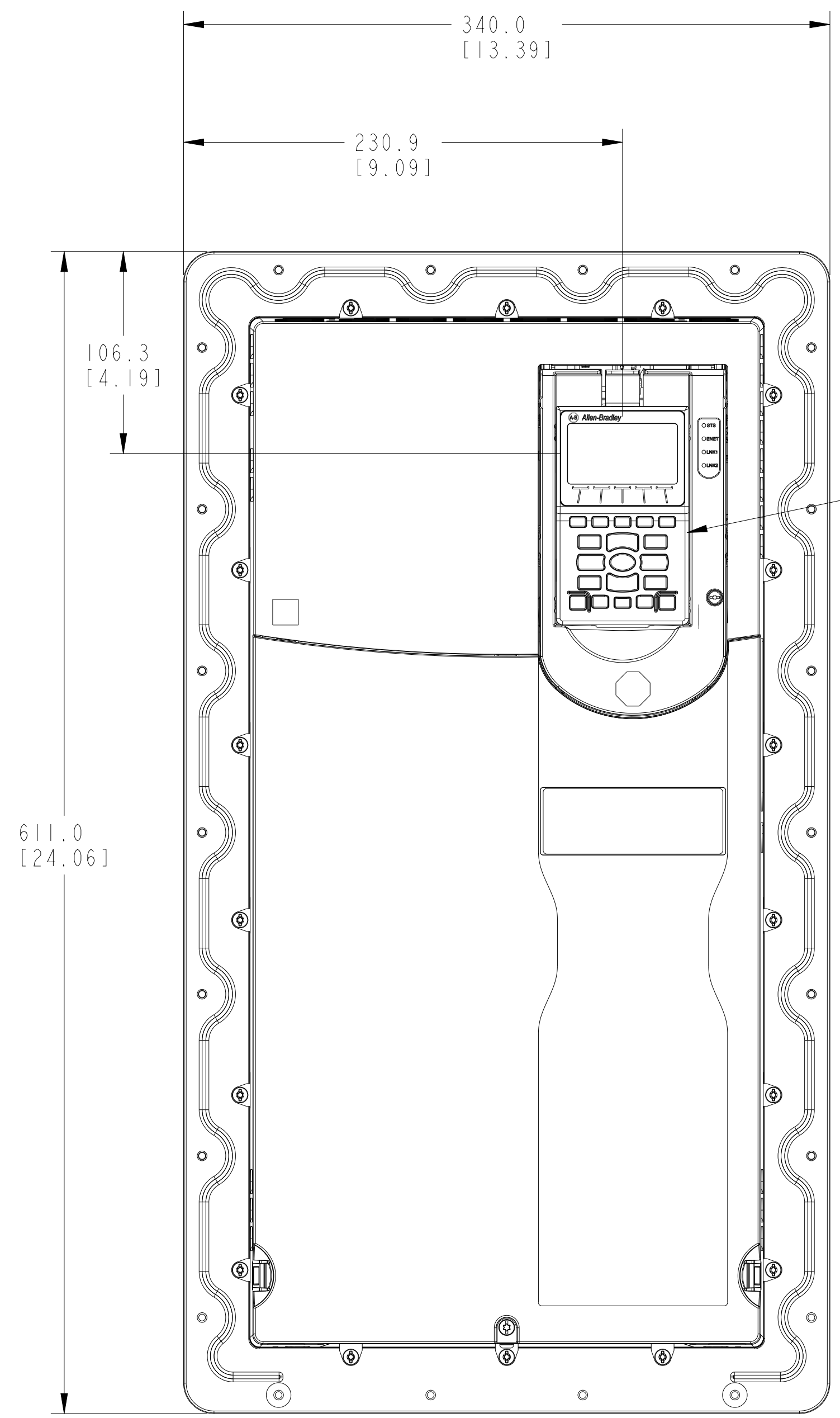
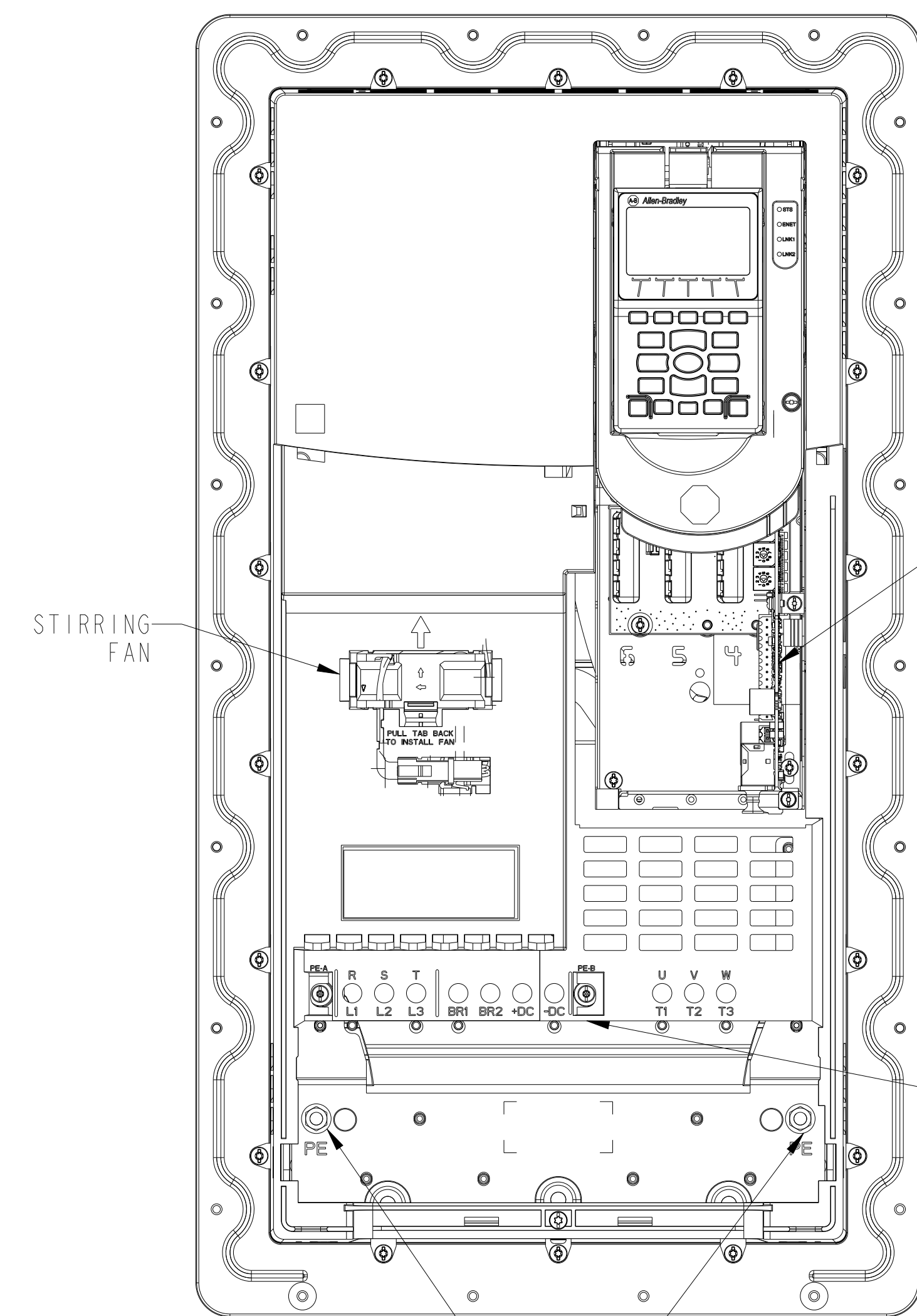


DRIVE COVER REMOVED

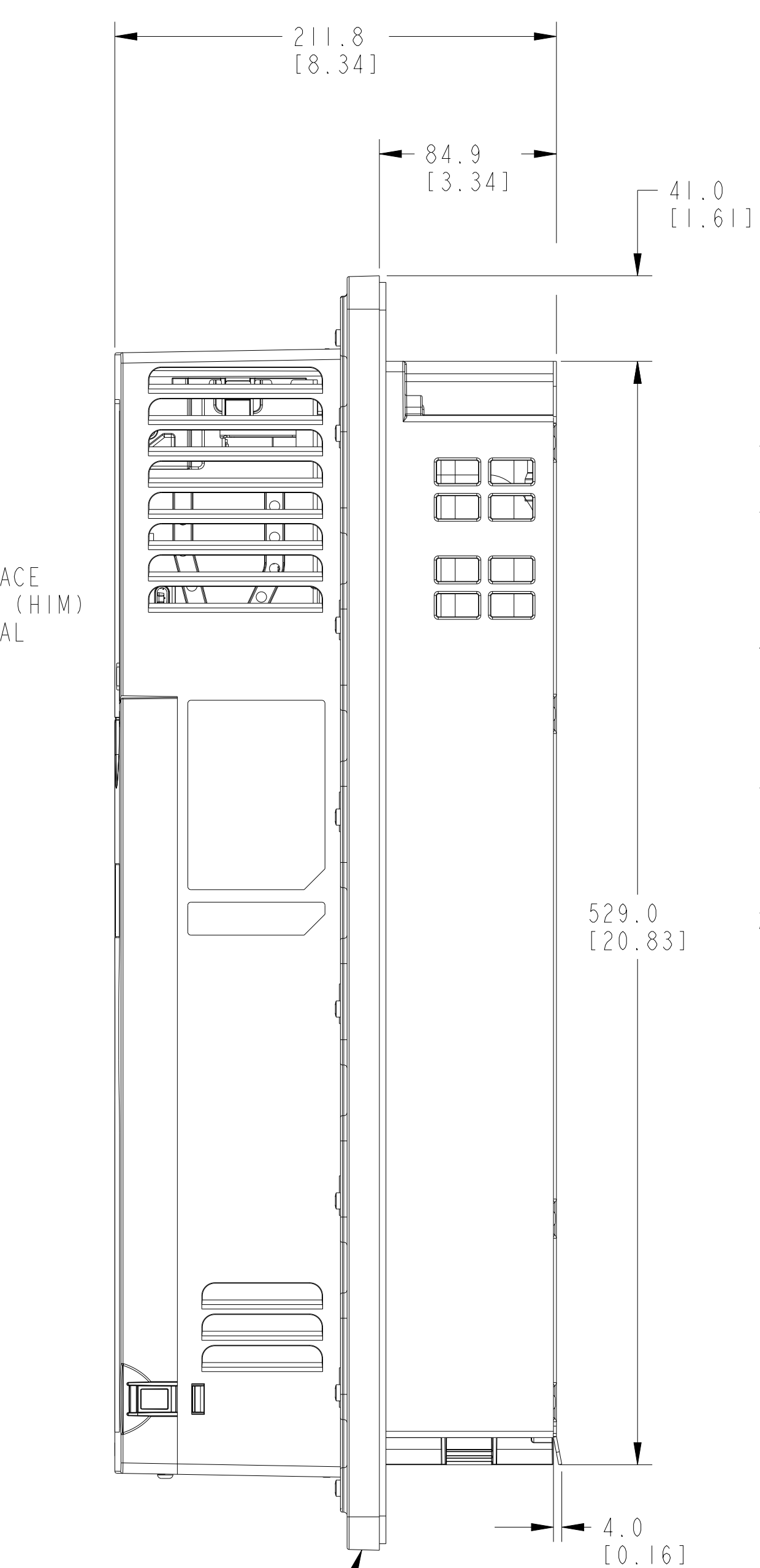


		<small>CONFIDENTIAL AND PROPRIETARY INFORMATION. THIS DOCUMENT CONTAINS CONFIDENTIAL AND PROPRIETARY INFORMATION OF ROCKWELL AUTOMATION, INC. AND MAY NOT BE USED, COPIED OR DISCLOSED TO OTHERS, EXCEPT WITH THE AUTHORIZED WRITTEN PERMISSION OF ROCKWELL AUTOMATION, INC.</small>	
		DATE: 2022-04-21	SHEET 3 OF 5
DESCRIPTION	STANDARD-SUBMITTAL PF755TS F-5	SIZE	VER
CREATED BY: NDELEO	CHANGED BY: BMACURA	D	10005343992 03

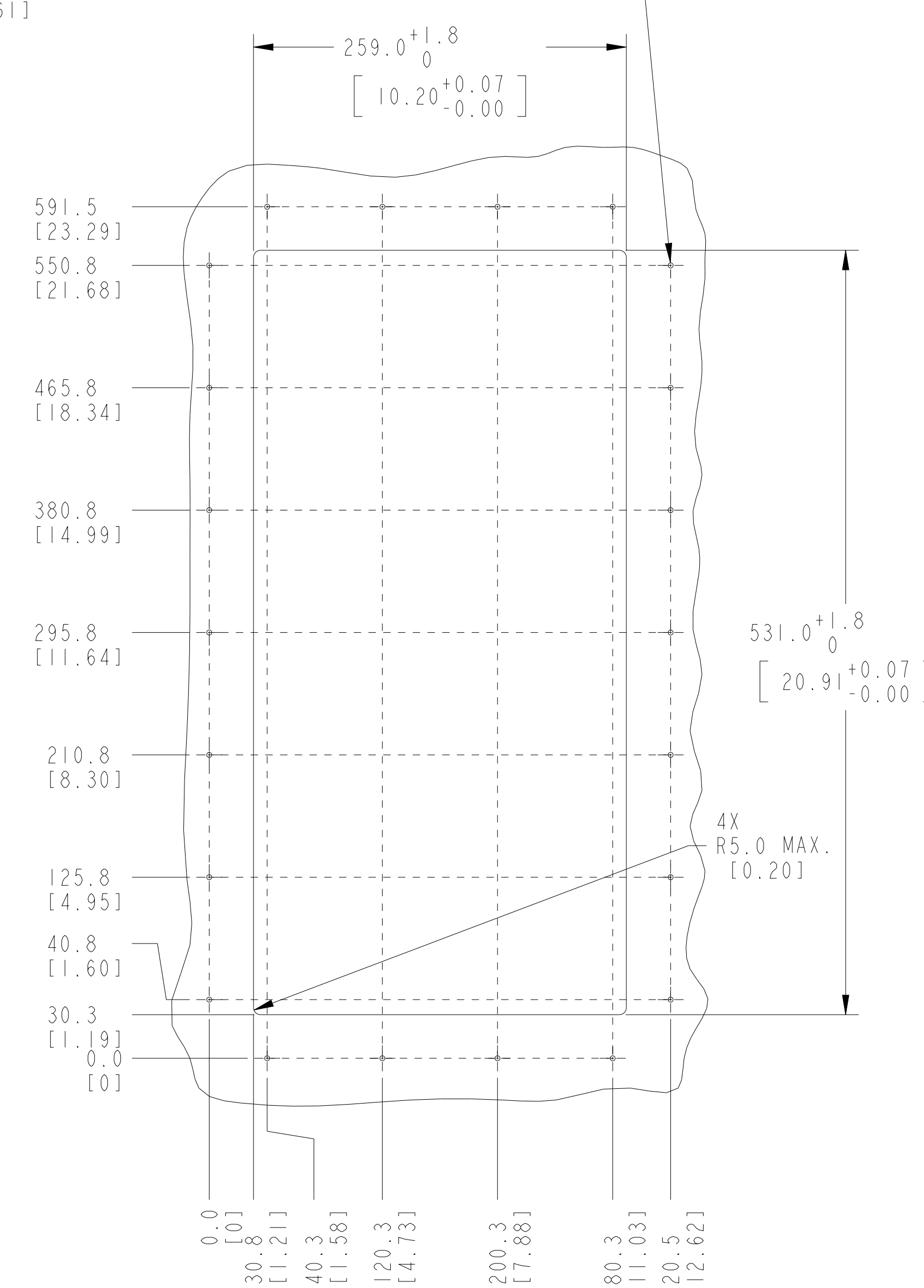
TYPE 4X FLANGE DRIVE



HUMAN INTERFACE MODULE (HIM) OPTIONAL

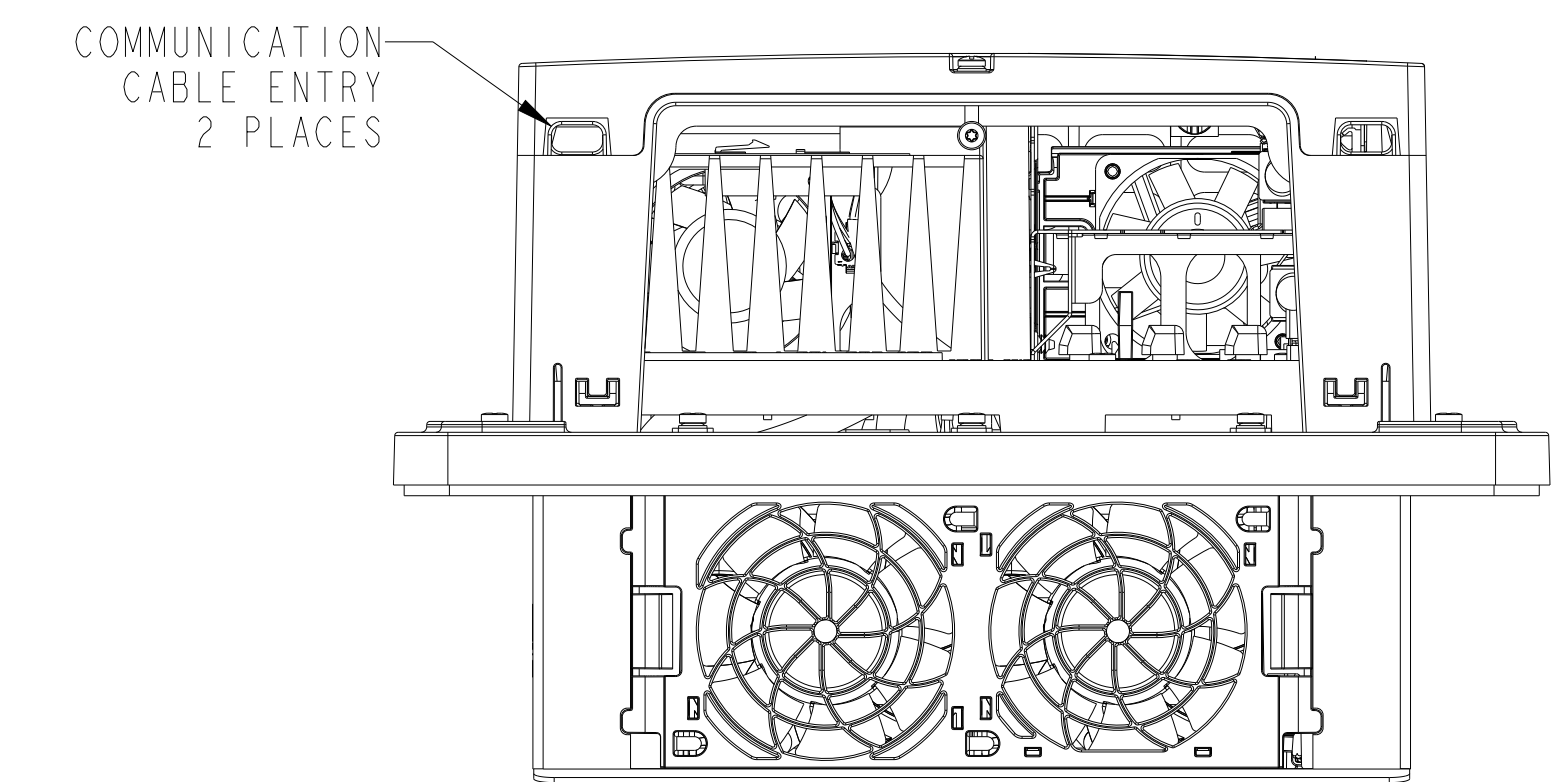


22 HOLES AT Ø4.0 [0.16] IN MINIMUM 14 GA STEEL MOUNTING SURFACE. DEBURR PILOT HOLES AND DRIVE OPENING.



PANEL CUTOUT

DRIVE COVER REMOVED

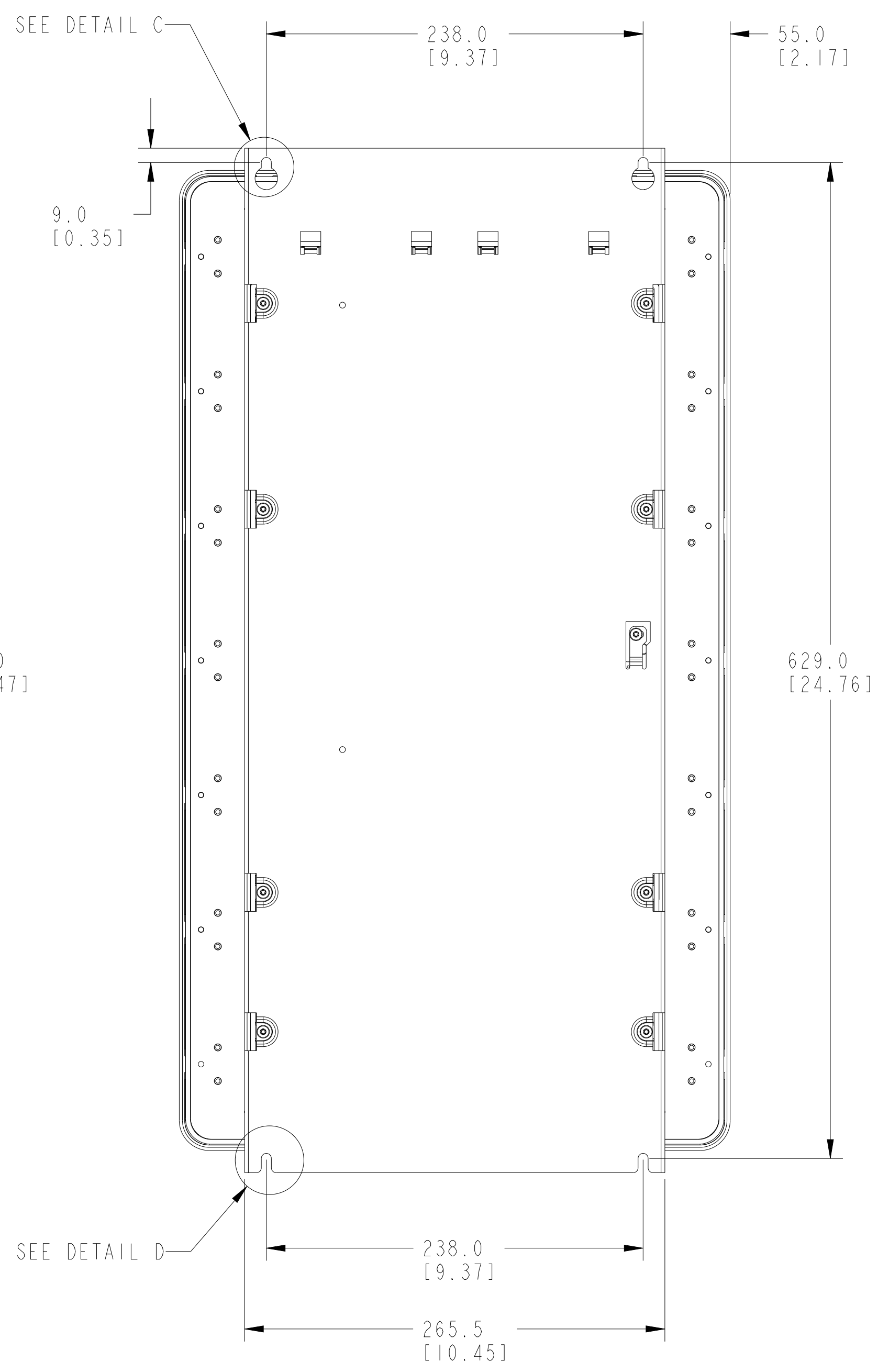
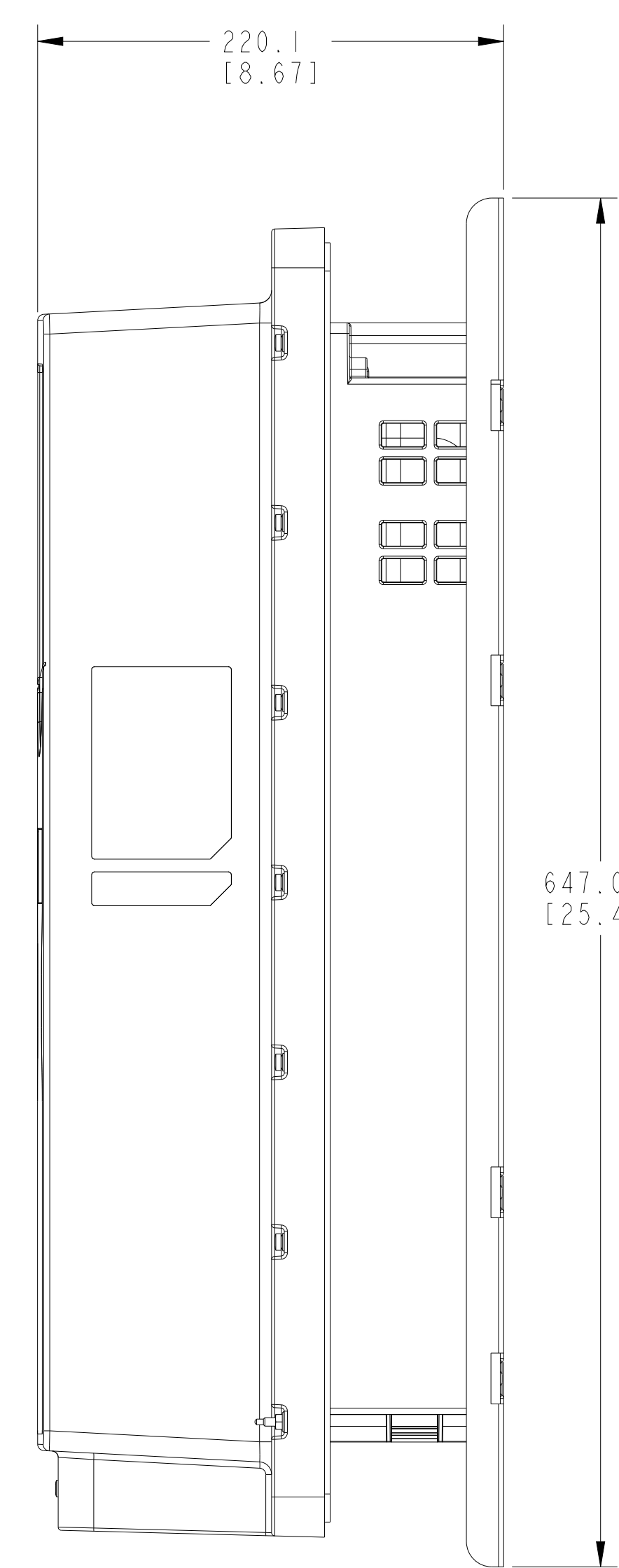
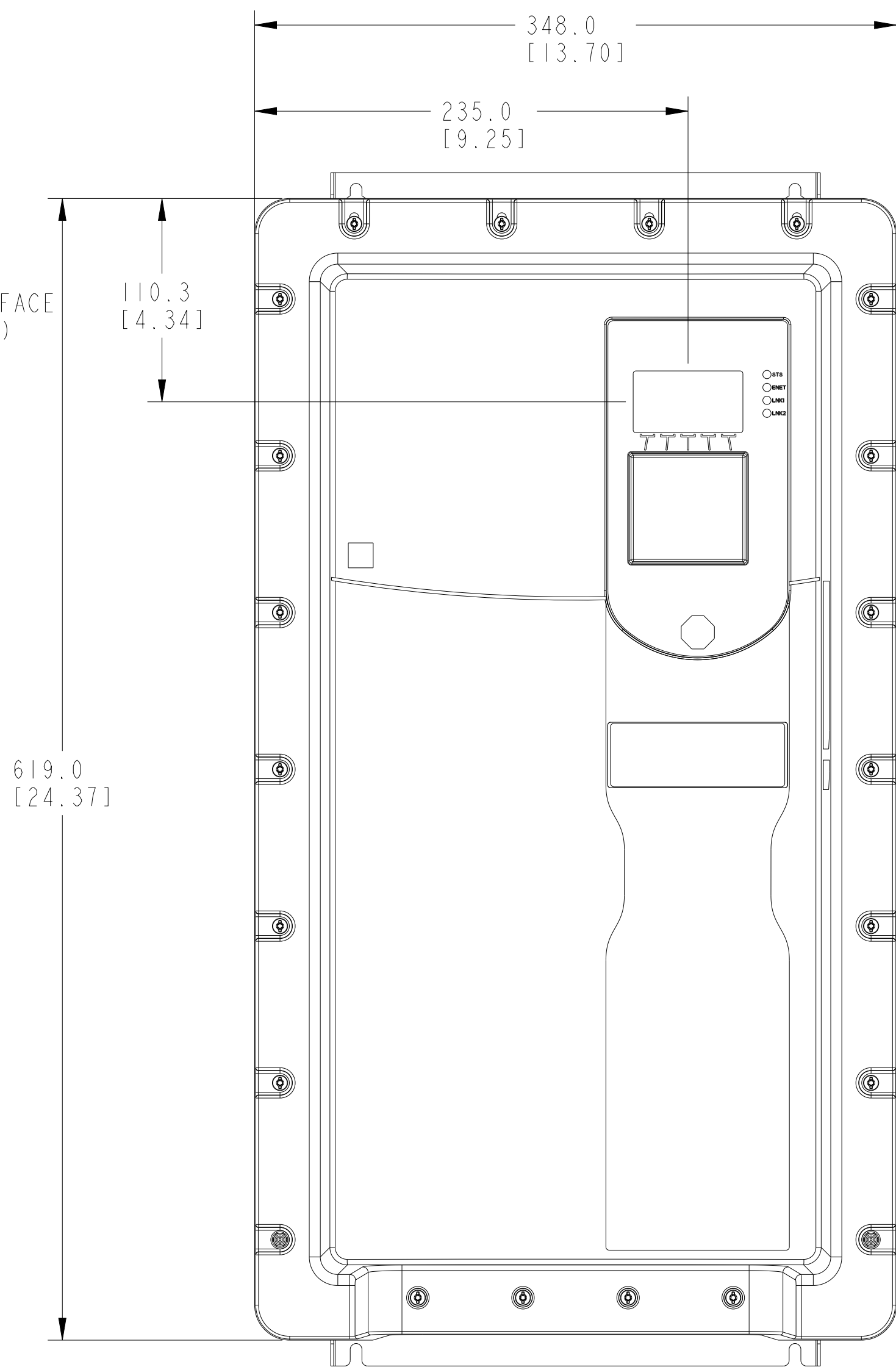
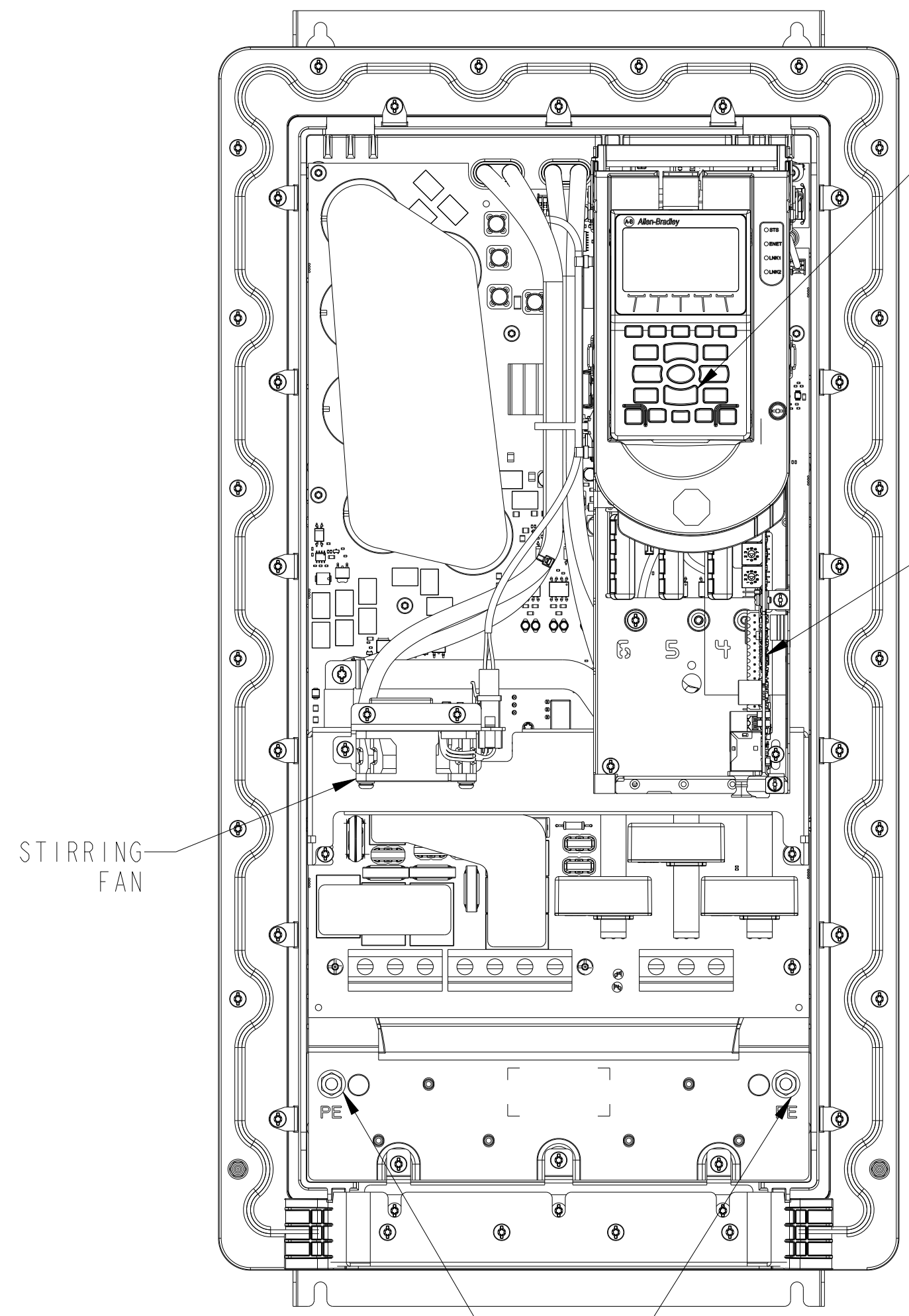


NOTES:

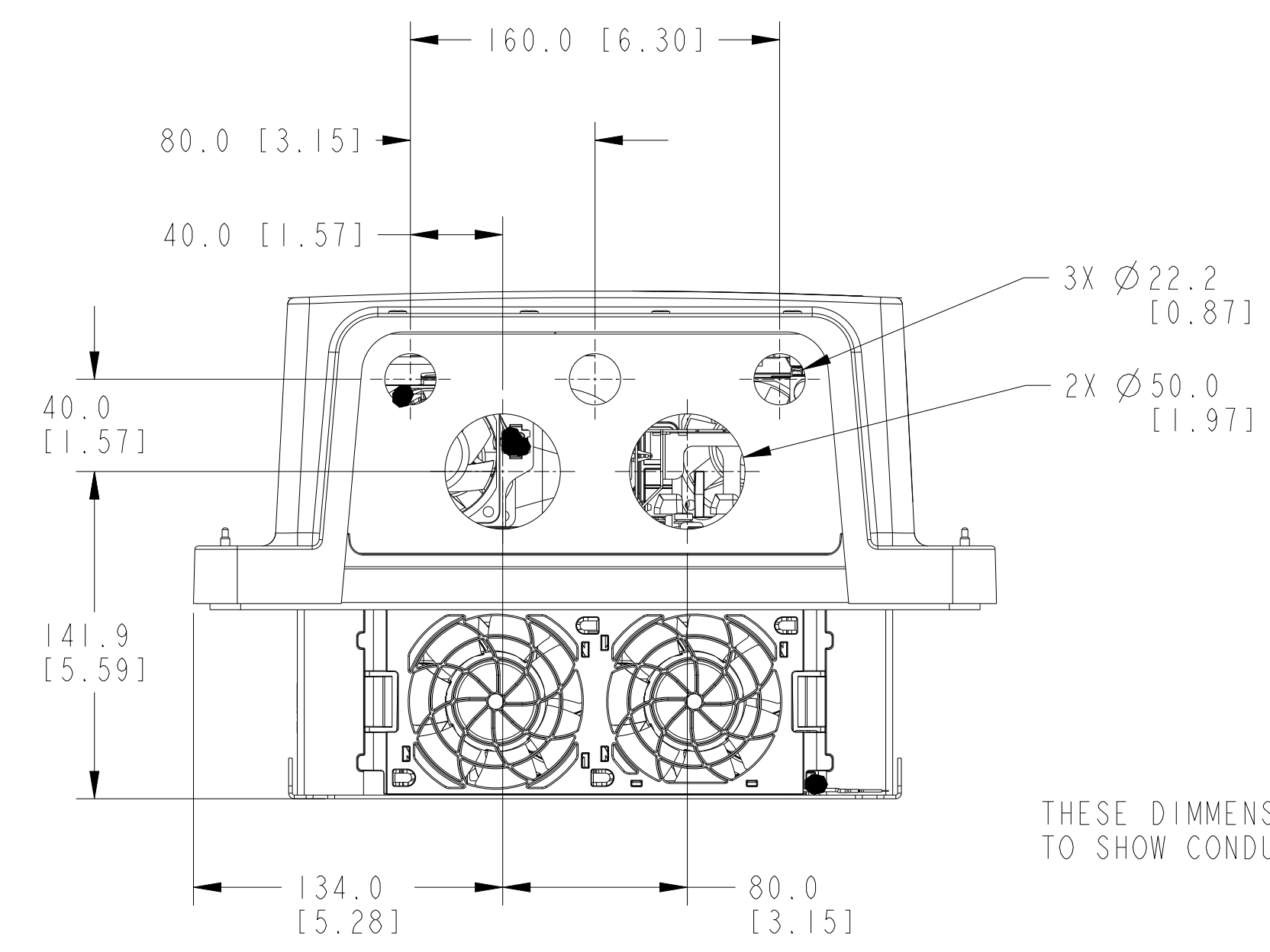
1. MOUNTING HARDWARE SHIPPED WITH FLANGE MOUNT DRIVE.

		<small>CONFIDENTIAL AND PROPRIETARY INFORMATION. THIS DOCUMENT CONTAINS CONFIDENTIAL AND PROPRIETARY INFORMATION OF ROCKWELL AUTOMATION, INC. AND MAY NOT BE USED, COPIED OR DISCLOSED TO OTHERS, EXCEPT WITH THE AUTHORIZED WRITTEN PERMISSION OF ROCKWELL AUTOMATION, INC.</small>	
		DATE: 2022-04-21	SHEET 4 OF 5
DESCRIPTION	STANDARD-SUBMITTAL PF755TS F-5	SIZE D1R	VER
CREATED BY: NDELEO	CHANGED BY: BMACURA	D	10005343992 03

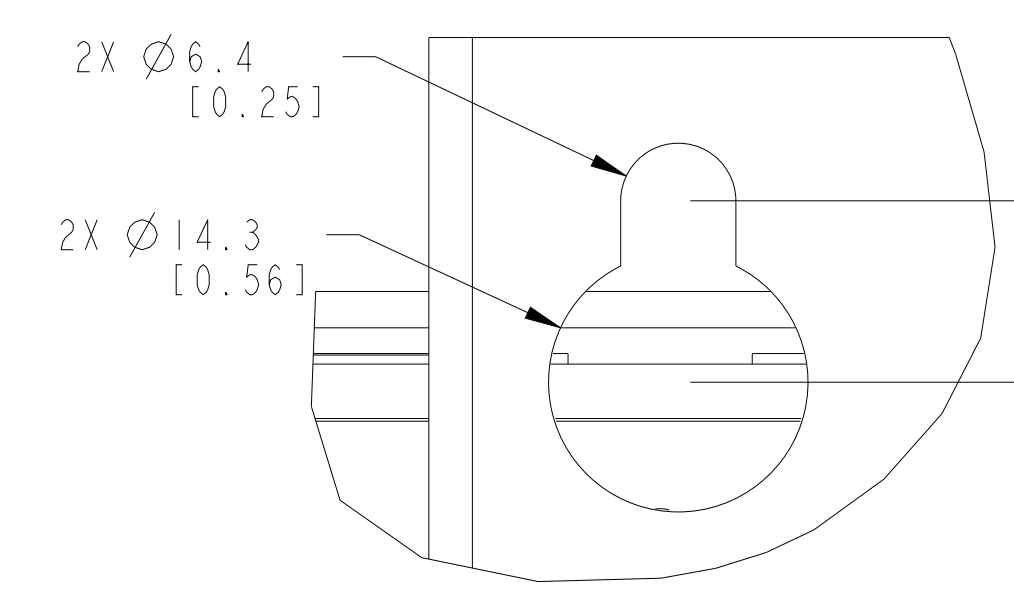
TYPE 12



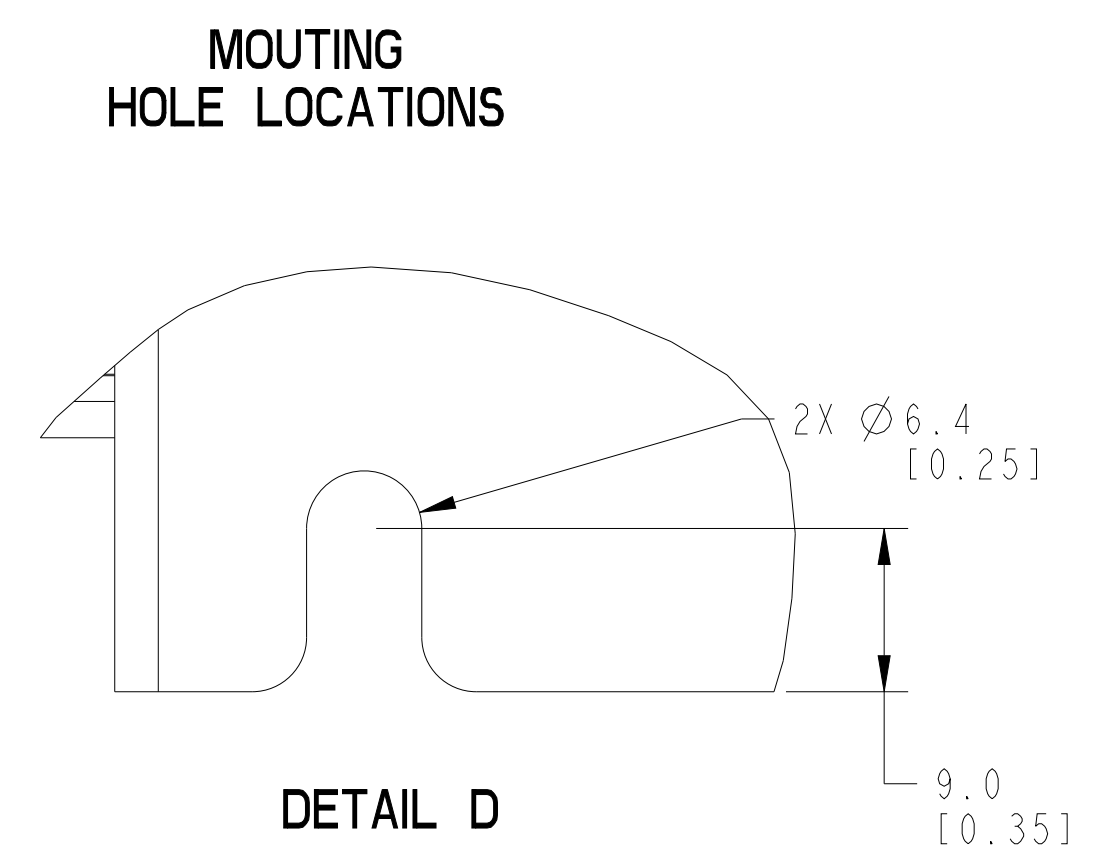
DRIVE COVER REMOVED



THESE DIMMENSIONS ADDED TO SHOW CONDUIT FITTING OPENINGS



DETAIL C



DETAIL D

MOUNTING HOLE LOCATIONS

		<small>CONFIDENTIAL AND PROPRIETARY INFORMATION. THIS DOCUMENT CONTAINS CONFIDENTIAL AND PROPRIETARY INFORMATION OF ROCKWELL AUTOMATION, INC. AND MAY NOT BE USED, COPIED OR DISCLOSED TO OTHERS, EXCEPT WITH THE AUTHORIZED WRITTEN PERMISSION OF ROCKWELL AUTOMATION, INC.</small>	
		DATE: 2022-04-21	SHEET 5 OF 5
DESCRIPTION	STANDARD-SUBMITTAL PF755TS F-5	SIZE D1R	VER
CREATED BY: NDELEO	CHANGED BY: BMACURA	D	10005343992 03