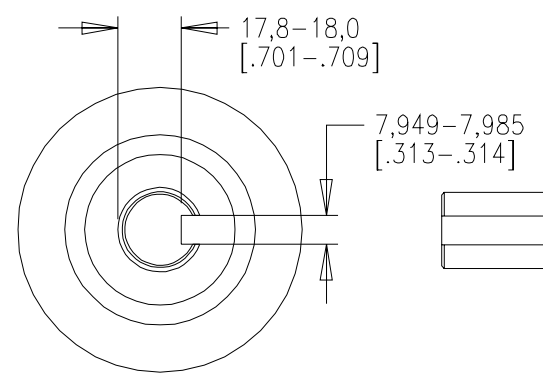


KEY SUPPLIED
 8+0, -0.036 x 25
 7+0, -0.036 x 25

OPTIONAL SHAFT SEAL
 ø40xø24x10



SHAFT DETAIL (NO SCALE)

- SPECIFICATIONS:
- MOTOR TYPE: 8 POLE, 3 PHASE, WYE WINDING, PERMANENT MAGNET ROTOR, TOTALLY ENCLOSED, NON VENTILATED.
 - CONTINUOUS STALL TORQUE: 4.86 Nm (43 LB-IN) MAX AT 155°C WINDING TEMPERATURE, IN A 40°C AMBIENT, WHEN MOUNTED ON A 12 INCH SQUARE X 1/2 INCH THICK ALUMINUM HEAT SINK.
 - OPERATING SPEED: 4500 RPM MAX.
 - Ke: 47±10% V/KRPM 0-PEAK (PHASE TO PHASE) AT 20-30°C.
 - SERIAL ENCODER, WITH 16 BIT MULTI-TURN AND 17 BIT SINGLE TURN ABSOLUTE POSITION DATA.
 - BRAKE: 24VDC, 9.3 Nm (82 LB-IN) MAX HOLDING TORQUE. BRAKE RELEASES WHEN VOLTAGE APPLIED, EITHER POLARITY.
 - FOR ADDITIONAL SPECIFICATIONS SEE TLA410MBJ34AAESE.

PIN-OUT		
ENCODER CONNECTOR		
PIN	FUNCTION	COLOR
1-6	-	-
7	EPWR	RED
8	ECOM + BAT-	BROWN/BLACK + BLACK
9	SHIELD	BLACK SHRINK
10-11	-	-
12	SD+	BLUE
13	SD-	BLUE/BLACK
14	BAT+	BROWN
15	-	-

PIN-OUT		
POWER CONNECTOR		
PIN	FUNCTION	COLOR
1	U	RED
2	V	WHITE
3	W	BLACK
4	GROUND	YELLOW/GREEN

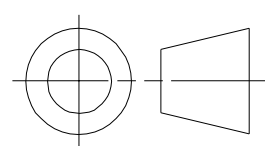
PIN-OUT		
BRAKE CONNECTOR		
PIN	FUNCTION	COLOR
1	BR+	YELLOW
2	BR-	BLUE

AMP 170359-1 PIN CONTACTS
 AMP 172165-1 BRAKE CONNECTOR
 AMP 172171-1 ENCODER CONNECTOR
 AMP 770835-1 PIN CONTACTS
 AMP 350779-1 HOUSING POWER CONNECTOR
 AMP 350218-3 PIN CONTACTS (U,V,W)
 AMP 350654-1 PIN CONTACT (GROUND)

ProE Version 0 Modified 0

DXF FILE AVAILABLE

01	1007016	SJ	RELEASED		
REV	ECN	BY	REVISION DESCRIPTION	DATE	CHKR
UNLESS OTHERWISE SPECIFIED			DRAWN BY	DATE	DESIGN ENGR
DO NOT SCALE DRAWING			SJ	4-20-04	
DIMENSIONS ARE IN MILLIMETERS			DATE		
WITH INCHES REFERENCED [X.X]			DATE		
UNTOLERANCED DIMENSIONS ARE REFERENCE			DATE		
THIRD ANGLE PROJECTION			TLA410MBJ34AA,ESM		



PART NO.
 TLA410MBJ34AAESM

SCALE : 1 0.500	DWG SIZE B	SHEET 1 OF 1
--------------------	---------------	-----------------