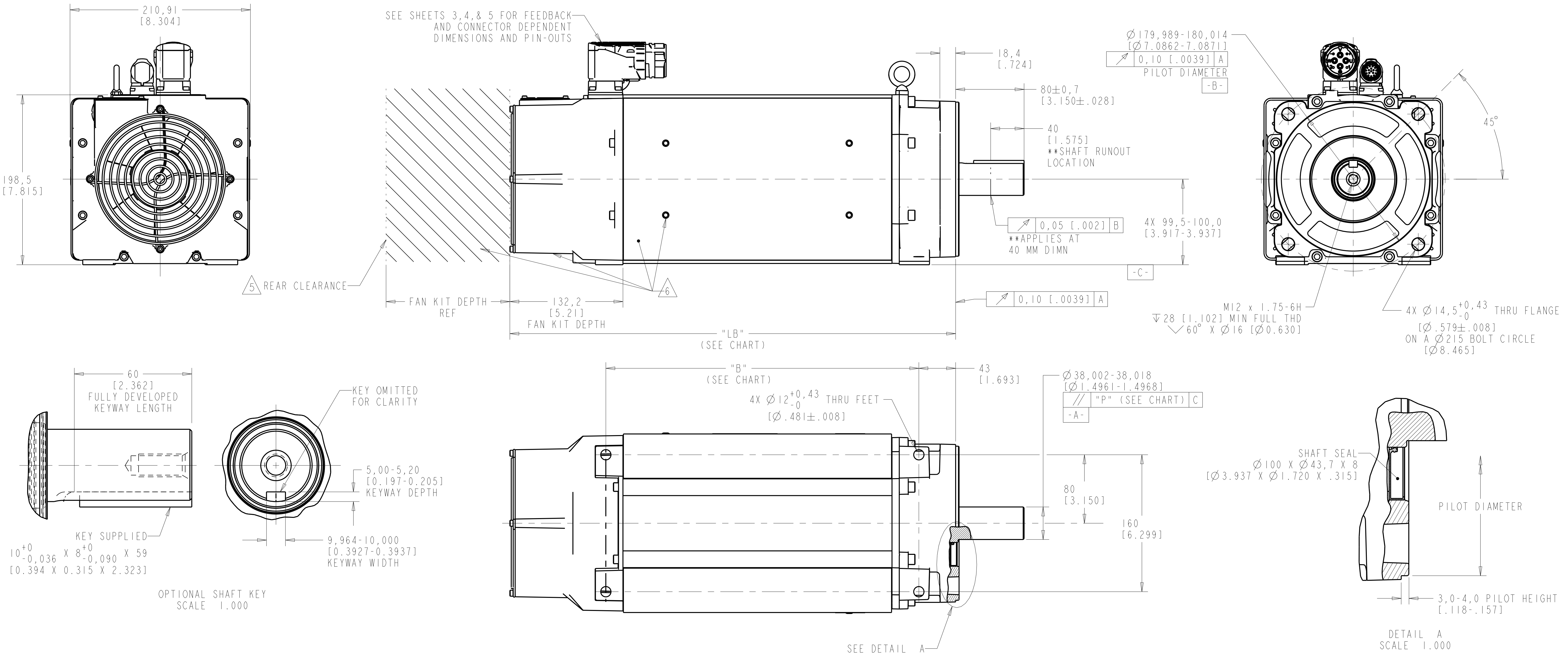


MODEL SHOWN ON THIS SHEET IS VPC-B2153x-xJ74FS



| FRAME-STACKS | BRAKE OPTION | MOTOR DIMENSIONS | | | | RATED SPEED | FEEDBACK TYPE | | |
|--------------|--------------|------------------|----------------|---------------|------------|-------------|--------------------|--------------------|--------------------|
| | | LB | LB-FANLESS | B | P | | S | Q | Y |
| 215-3 | 2 | 440,1 [17.33] | 354,03 [13.93] | 284,9 [11.22] | 0,8 [0.03] | 9 | SEE FIGURE 3, SH 4 | SEE FIGURE 1, SH 3 | SEE FIGURE 3, SH 4 |
| | 4 | 521,1 [20.52] | 435,03 [17.13] | 365,9 [14.41] | 1,0 [0.04] | 9 | SEE FIGURE 3, SH 4 | SEE FIGURE 1, SH 3 | N/A |
| 215-4 | 2 | 480,6 [18.92] | 394,53 [15.53] | 325,4 [12.81] | 1,0 [0.04] | 9 | SEE FIGURE 3, SH 4 | SEE FIGURE 1, SH 3 | SEE FIGURE 3, SH 4 |
| | | | | | | A | SEE FIGURE 4, SH 5 | SEE FIGURE 2, SH 3 | SEE FIGURE 4, SH 5 |
| | 4 | 561,6 [22.11] | 475,53 [18.72] | 406,4 [16.00] | 1,0 [0.04] | 9 | SEE FIGURE 3, SH 4 | SEE FIGURE 1, SH 3 | N/A |
| | | | | | | A | SEE FIGURE 4, SH 5 | SEE FIGURE 2, SH 3 | |
| 215-5 | 2 | 521,1 [20.52] | 435,03 [17.13] | 365,9 [14.41] | 1,0 [0.04] | D | SEE FIGURE 4, SH 5 | SEE FIGURE 2, SH 3 | SEE FIGURE 4, SH 5 |
| | 4 | 642,6 [25.30] | 556,53 [21.91] | 487,4 [19.19] | | | | | N/A |
| 215-6 | 2 | 561,6 [22.11] | 475,53 [18.72] | 406,4 [16.00] | 1,0 [0.04] | D | SEE FIGURE 4, SH 5 | SEE FIGURE 2, SH 3 | SEE FIGURE 4, SH 5 |
| | 4 | 642,6 [25.30] | 556,53 [21.91] | 487,4 [19.19] | | | | | N/A |

NOTES:

- DXF OF THIS DRAWING MUST BE SCALED TO LENGTH. SEE MOTOR DIMENSIONS CHART.
- 3D STEP (.stp) FILES ARE AVAILABLE FOR ALL MOTOR CONFIGURATIONS.
- FOR ADDITIONAL SPECIFICATIONS SEE ESE DRAWING DIR 10001892617.
- VPC CATALOG STRING CODES:

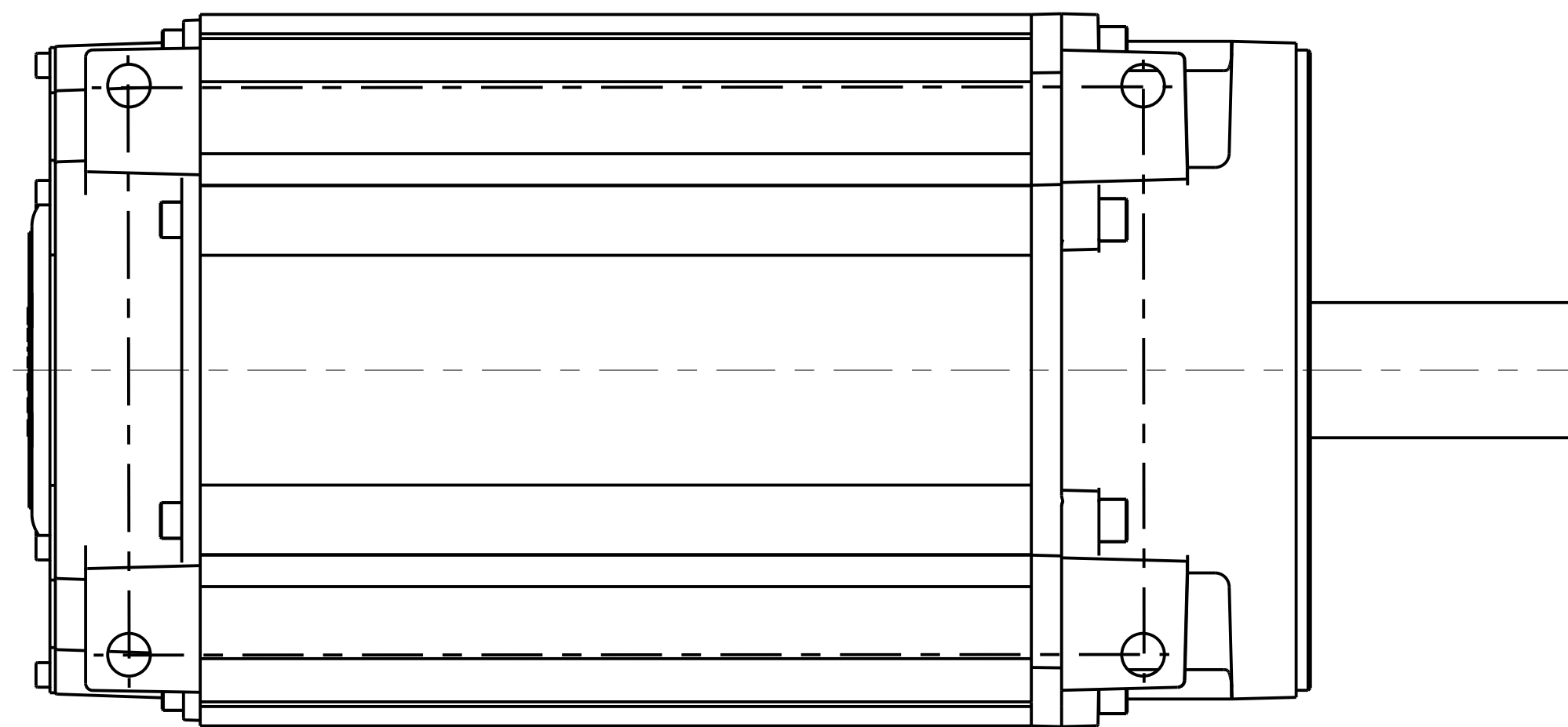
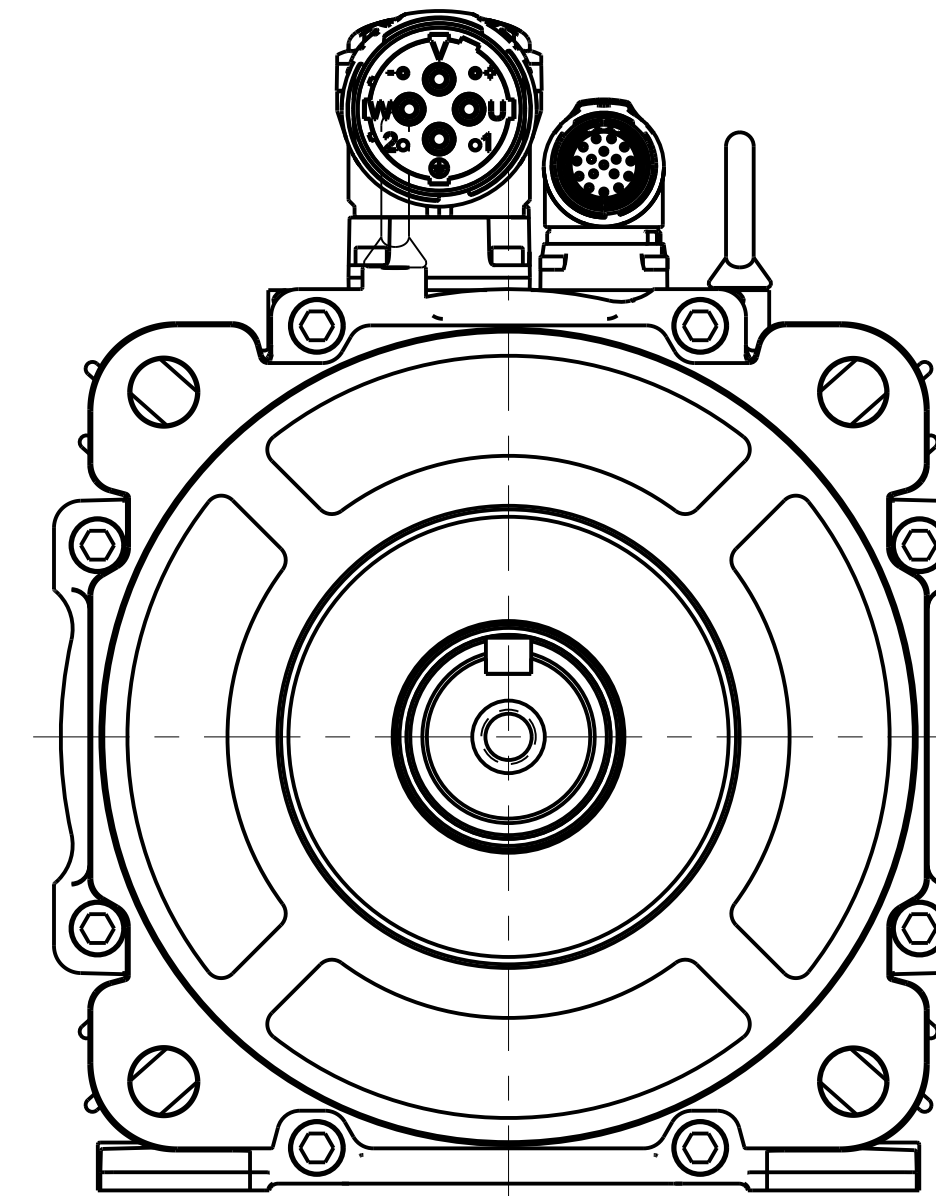
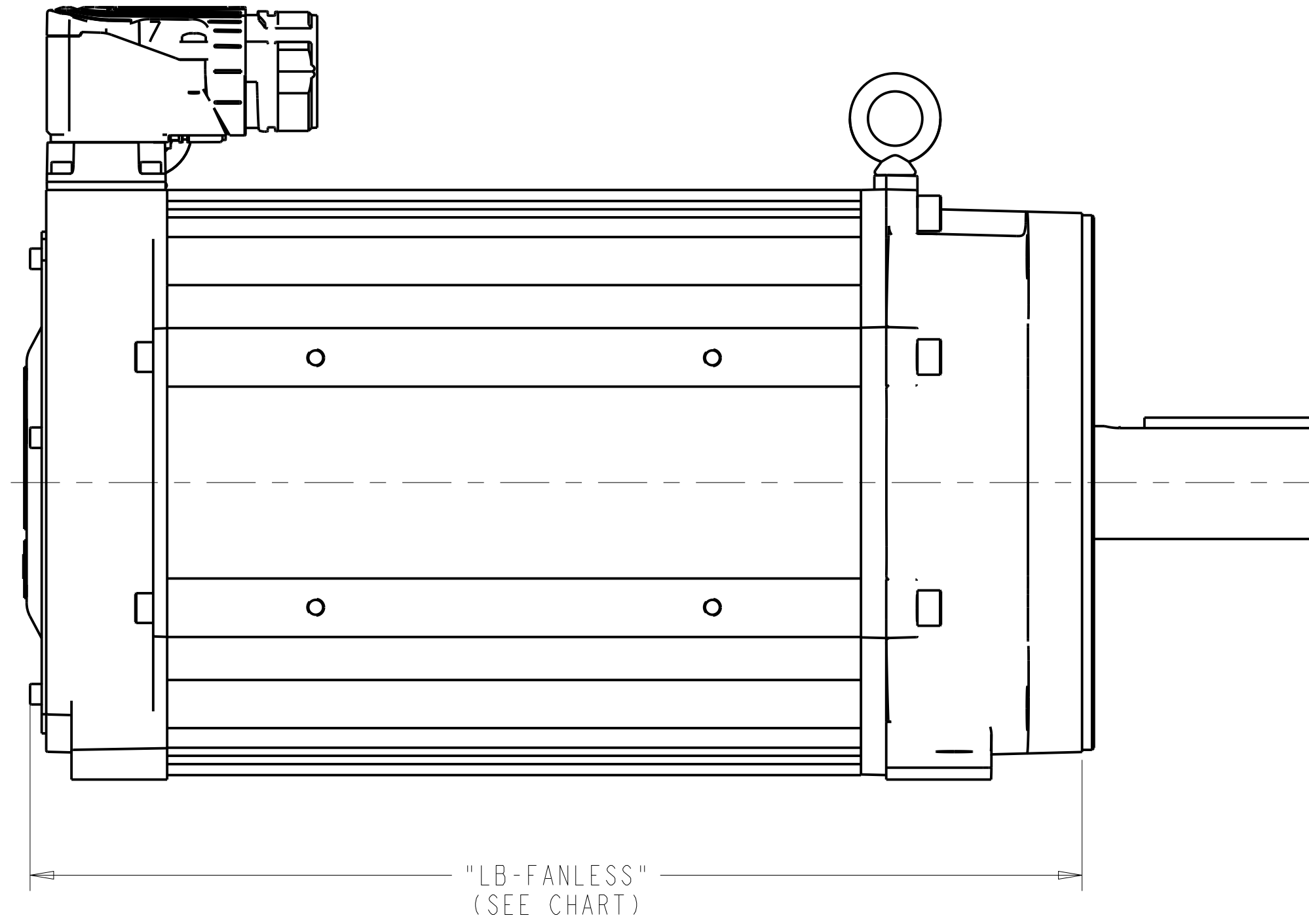
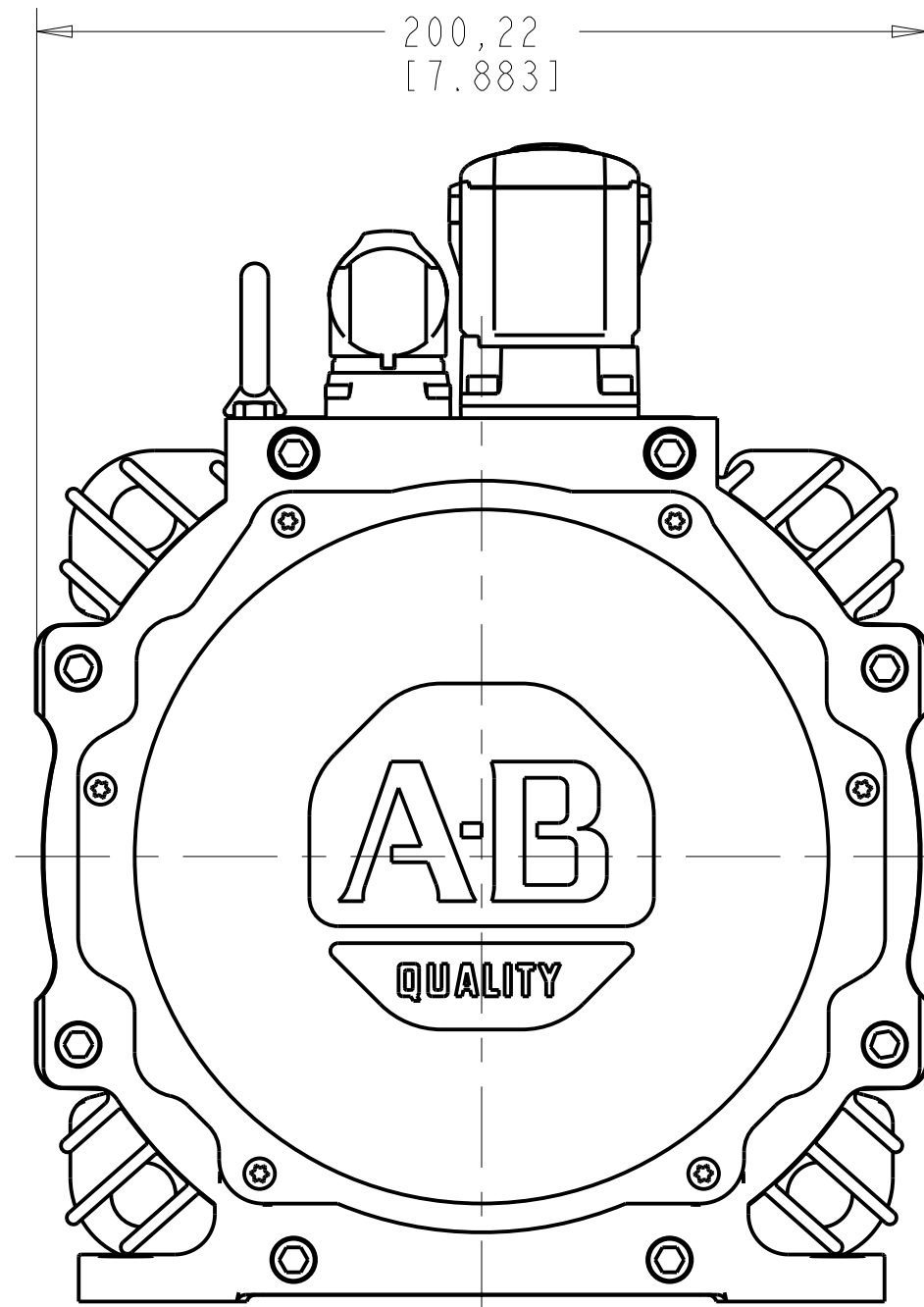
| | | | |
|--------------|--------------|---------------------------------------|---------------------------------------|
| BRAKE: | RATED SPEED: | FEEDBACK TYPE: | COOLING: |
| 2 = NO BRAKE | 9 = 1000 RPM | S = 21 BIT SINGLE-TURN (HIPERFACE) | A = NATURAL CONVECTION (FAN-LESS) |
| 4 = BRAKE | A = 1500 RPM | Q = 23 BIT MULTI-TURN (HIPERFACE DSL) | F = FORCED VENTILATION (WITH FAN-KIT) |
| | D = 3000 RPM | Y = 25 BIT MULTI-TURN (ENDAT 2.2) | |

5. FOR SUFFICIENT AIRFLOW AND SPACE FOR FAN KIT REMOVAL AND INSTALLATION, ENSURE THERE IS SPACE GREATER THAN OR EQUAL TO THAT OF THE FAN KIT DEPTH BEYOND THE REAR OF THE MOTOR (SHOWN). ONLY APPLICABLE FOR CATALOGS WITH FAN-KIT.
6. DIMENSIONS AND PARTS NOT APPLICABLE FOR FANLESS CATALOG CONFIGURATIONS.

| | | | |
|---|------------------------------------|--|--|
| <small>UNLESS OTHERWISE SPECIFIED</small> <small>DO NOT SCALE DRAWING DIMENSIONS ARE IN MILLIMETERS WITH INCHES REFERENCED EXCEPT WHERE NOTED</small> <small>UNLESS OTHERWISE SPECIFIED DIMENSIONS ARE REFERENCED TO 3RD ANGLE PROJECTION</small> | | <small>CONFIDENTIAL AND PROPRIETARY INFORMATION. THIS DOCUMENT CONTAINS CONFIDENTIAL AND PROPRIETARY INFORMATION OF ROCKWELL AUTOMATION, INC. AND MAY NOT BE USED, COPIED OR DISCLOSED TO OTHERS, EXCEPT WITH THE AUTHORIZED WRITTEN PERMISSION OF ROCKWELL AUTOMATION, INC.</small> | |
| | | VPC,215,ESM | <small>DATE: 12-13-2019</small> <small>SHEET 1 OF 5</small> <small>SIZE: D1R</small> <small>VER: 03</small> 10002385595 |
| <small>CREATED BY: SWLARSON</small> | <small>CHANGED BY: VTHIMMA</small> | | |

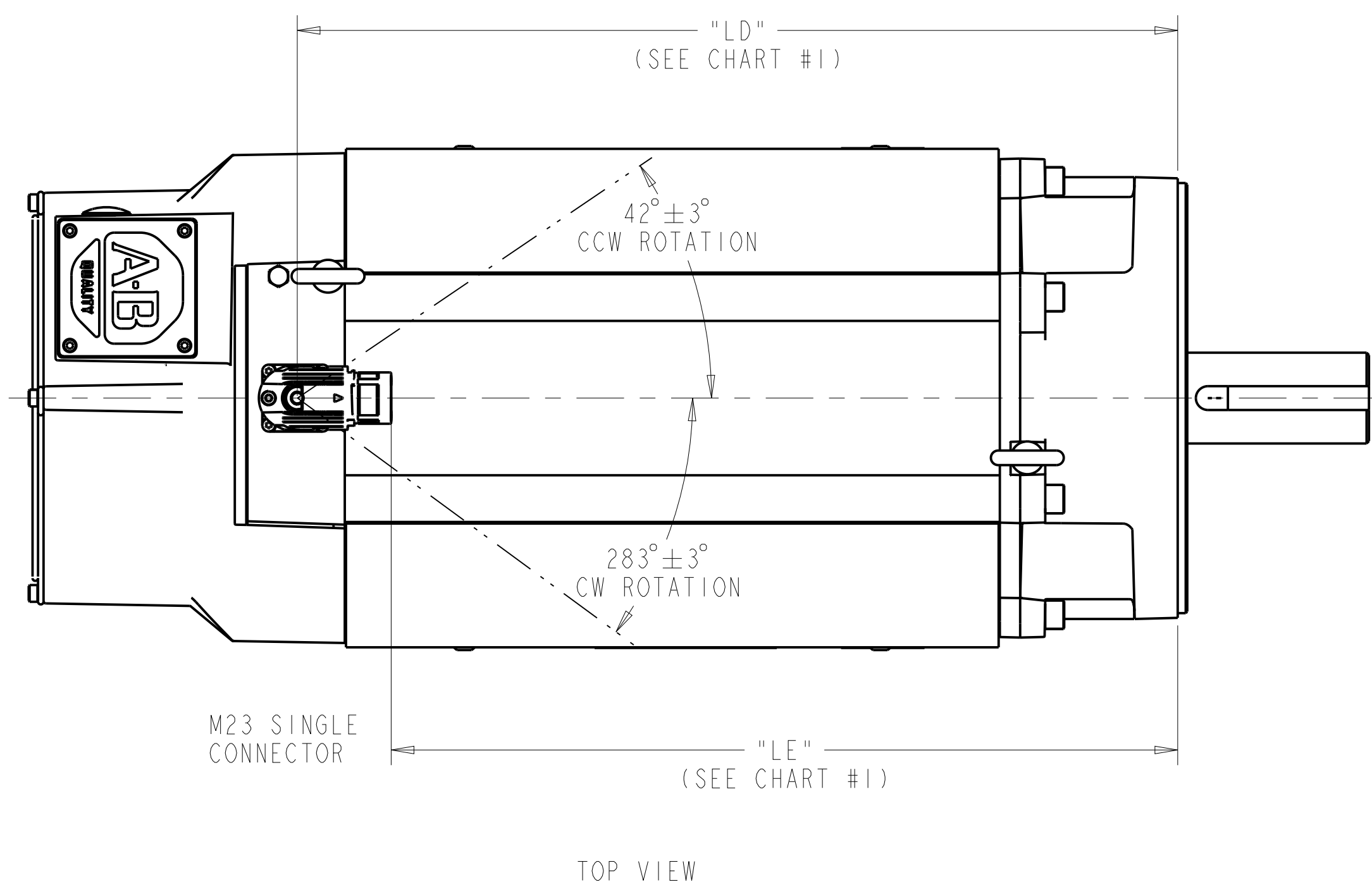
FAN-LESS MOTOR CONFIGURATIONS

MODEL SHOWN ON THIS SHEET IS VPC-B2153x-xJ74AS



| | | | |
|--|---------|---|----------------------------------|
| | | <small>CONFIDENTIAL AND PROPRIETARY INFORMATION THIS DOCUMENT CONTAINS CONFIDENTIAL AND PROPRIETARY INFORMATION OF ROCKWELL AUTOMATION, INC. AND MAY NOT BE USED, COPIED OR DISCLOSED TO OTHERS, EXCEPT WITH THE AUTHORIZED WRITTEN PERMISSION OF ROCKWELL AUTOMATION, INC.</small> | |
| | | VPC,215,ESM | DATE: 12-13-2019 SHEET 2 OF 5 |
| DESCRIPTION CREATED BY: SWLARSON CHANGED BY: VTHIMMA | SIZE: D | VER: 10002385595 | VER: 03 |

FIGURE #1



MODEL SHOWN IN FIGURE #1 IS VPC-B2154x-QJ12FS

CHART #1 (FOR FIGURE #1)

| FRAME-STACKS | BRAKE OPTION | MOTOR DIMENSIONS | |
|--------------|--------------|------------------|---------------|
| | | LD | LE |
| 215-3 | 2 | 328,4 [12.93] | 288,5 [11.36] |
| | 4 | 409,4 [16.12] | 369,5 [14.55] |
| 215-4 | 2 | 368,9 [14.52] | 329,0 [12.95] |
| | 4 | 449,9 [17.71] | 410,0 [16.14] |

SINGLE M23 CONNECTOR PIN-OUTS (FIGURE #1)

NON-BRAKE MOTOR
BRAKE OPTION "2"

M923 SINGLE CONNECTOR

| PIN ID | FUNCTION |
|--------|----------|
| A | U |
| B | V |
| C | W |
| ⊥ | GND |
| E | DSL + |
| F | - |
| G | - |
| H | DSL - |
| L | - |

APPLICABLE CATALOG STRINGS

VPC-B2153x-Qx12Fx
VPC-B21549-Qx12Fx

BRAKE MOTOR
BRAKE OPTION "4"

M923 SINGLE CONNECTOR

| PIN ID | FUNCTION |
|--------|----------|
| A | U |
| B | V |
| C | W |
| ⊥ | GND |
| E | DSL + |
| F | MBRK + |
| G | MBRK - |
| H | DSL - |
| L | - |

APPLICABLE CATALOG STRINGS

VPC-B2153x-Qx14Fx
VPC-B21549-Qx14Fx

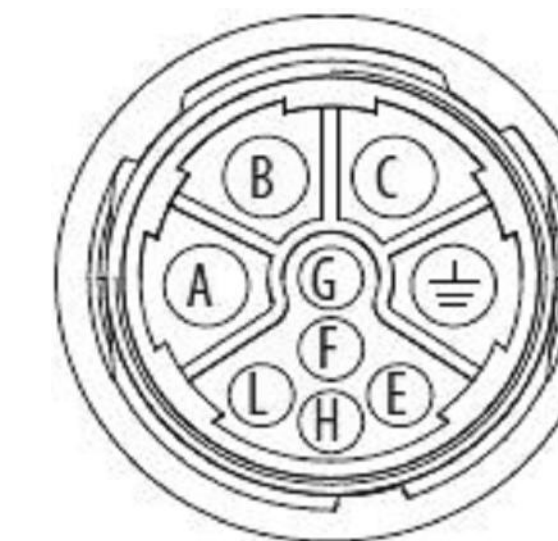
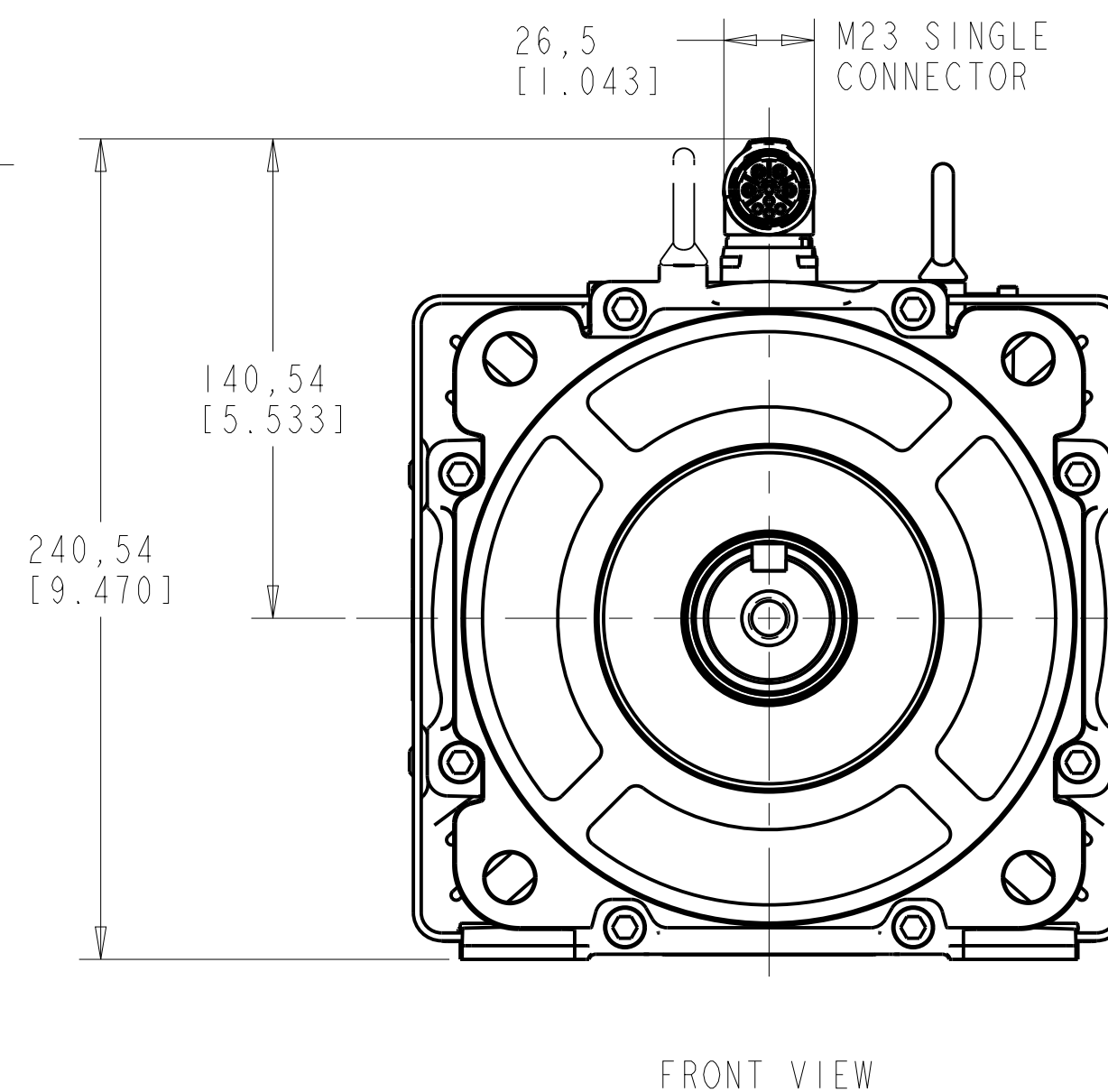
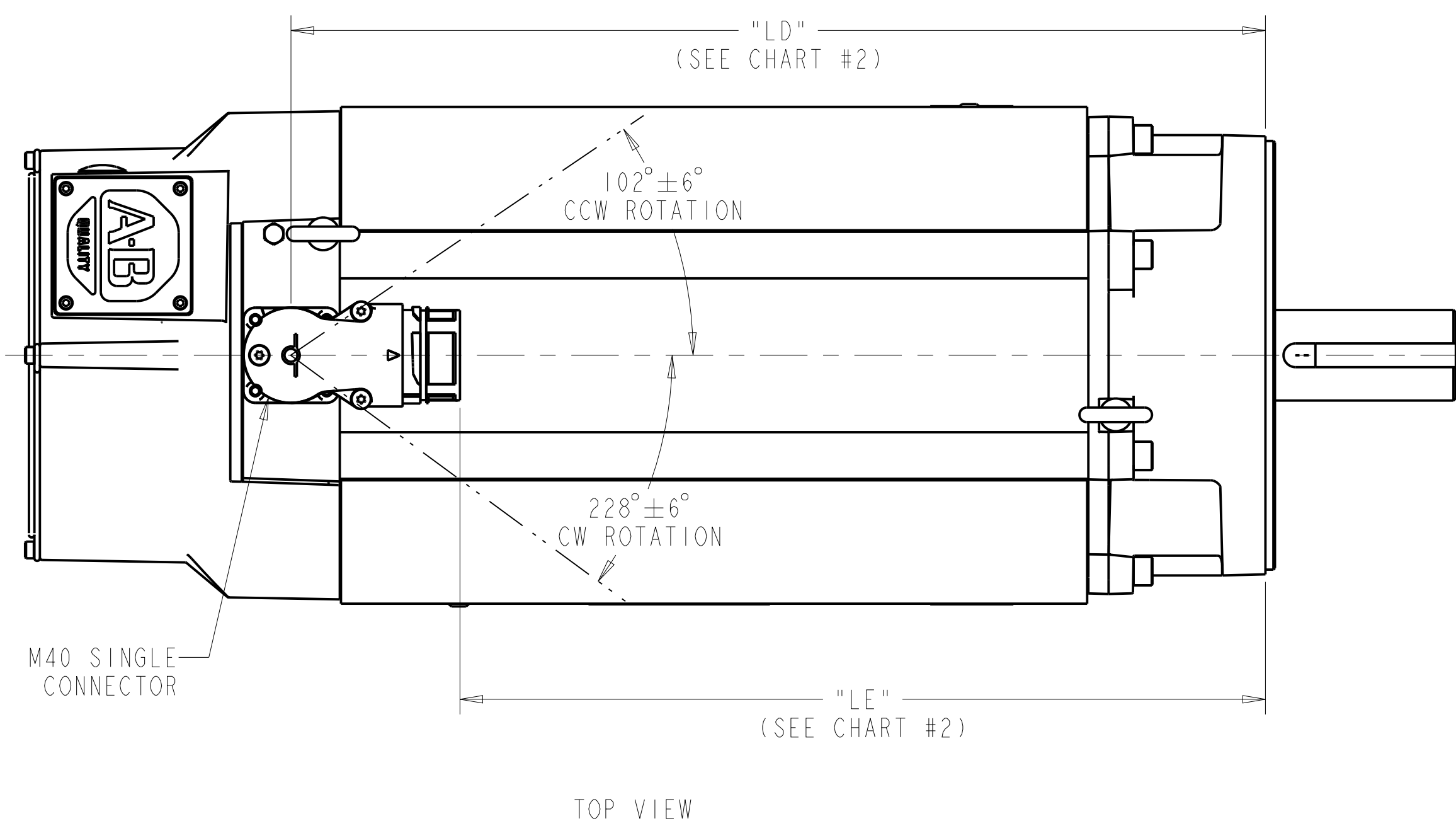


FIGURE #2



MODEL SHOWN IN FIGURE #2 IS VPC-B2155x-QJ12FS

CHART #2 (FOR FIGURE #2)

| FRAME-STACKS | BRAKE OPTION | MOTOR DIMENSIONS | |
|--------------|--------------|------------------|---------------|
| | | LD | LE |
| 215-4 | 2 | 368,9 [14.52] | 297,9 [11.73] |
| | 4 | 449,9 [17.71] | 378,9 [14.92] |
| 215-5 | 2 | 409,4 [16.12] | 338,4 [13.32] |
| | 4 | 530,9 [20.90] | 459,9 [18.11] |
| 215-6 | 2 | 449,9 [17.71] | 378,9 [14.92] |
| | 4 | 530,9 [20.90] | 459,9 [18.11] |

SINGLE M40 CONNECTOR PIN-OUTS (FIGURE #2)

NON-BRAKE MOTOR
BRAKE OPTION "2"

M740 SINGLE CONNECTOR

| PIN ID | FUNCTION |
|--------|----------|
| U | U |
| V | V |
| W | W |
| ⊥ | GND |
| I | - |
| 2 | - |
| L | DSL + |
| H | DSL - |
| + | - |
| - | - |
| N | - |

APPLICABLE CATALOG STRINGS

VPC-B2154A-Qx12Fx
VPC-B2154D-Qx12Fx
VPC-B2155D-Qx12Fx
VPC-B2156D-Qx12Fx

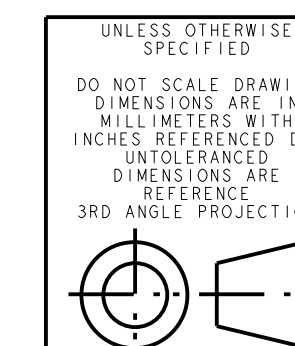
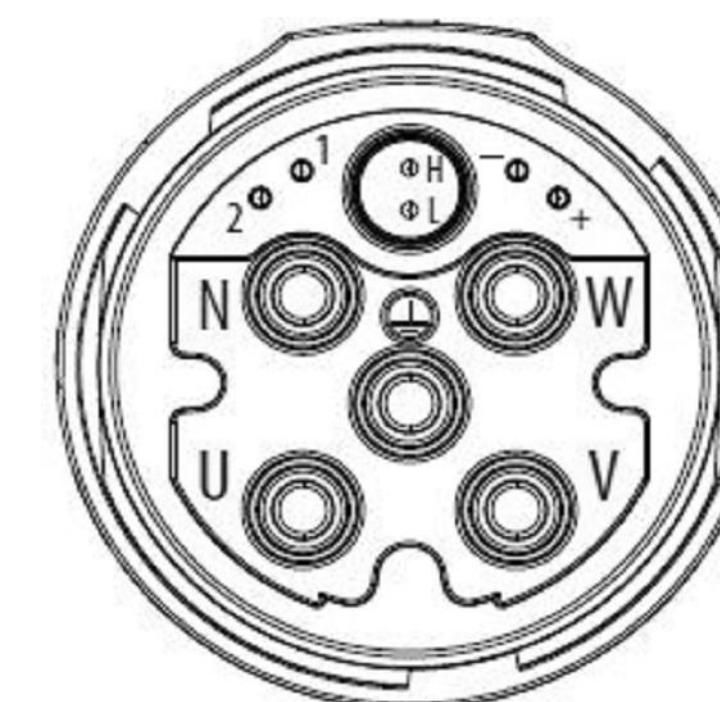
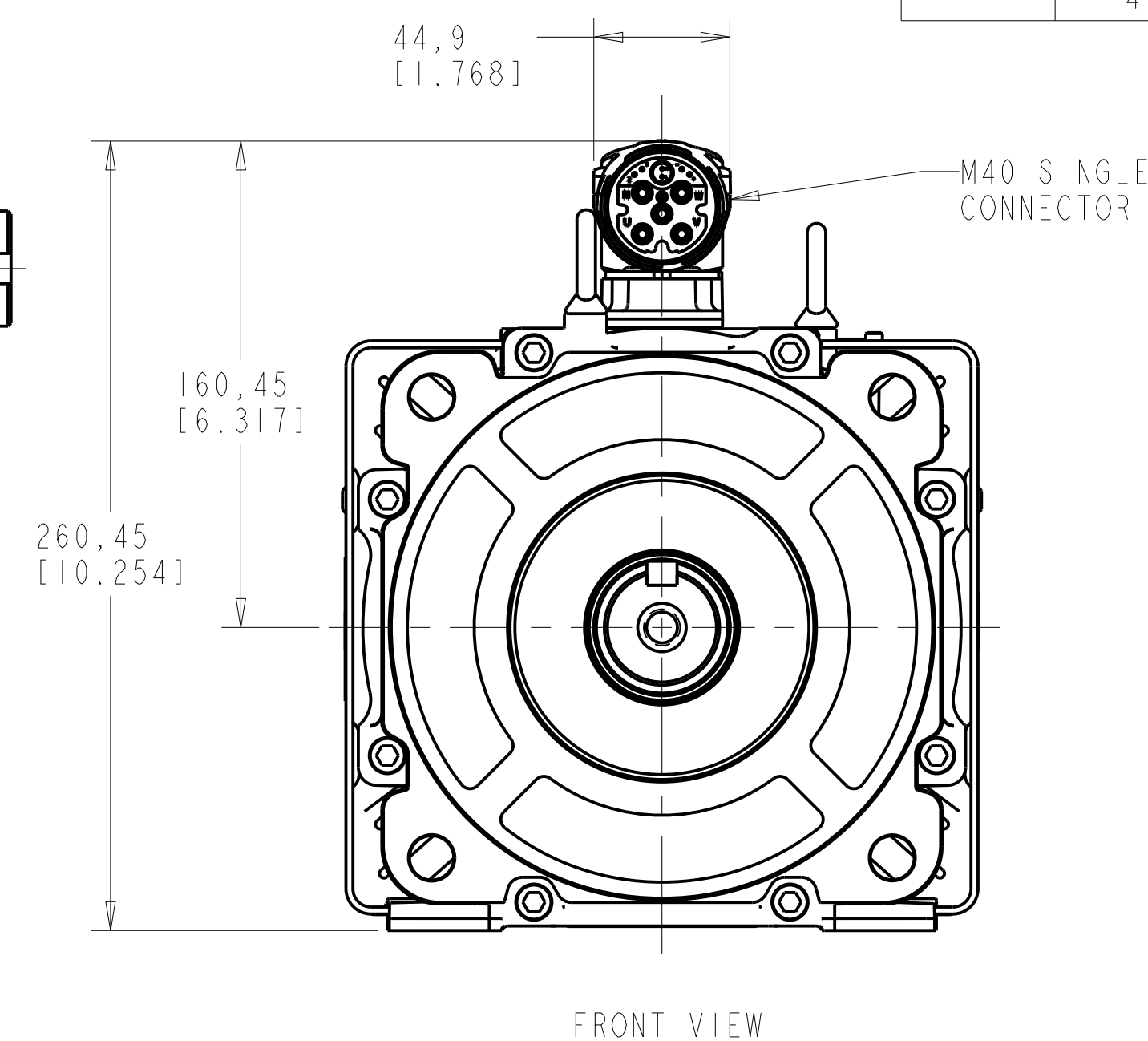
BRAKE MOTOR
BRAKE OPTION "4"

M740 SINGLE CONNECTOR

| PIN ID | FUNCTION |
|--------|----------|
| U | U |
| V | V |
| W | W |
| ⊥ | GND |
| I | MBRK + |
| 2 | MBRK - |
| L | DSL + |
| H | DSL - |
| + | - |
| - | - |
| N | - |

APPLICABLE CATALOG STRINGS

VPC-B2154A-Qx14Fx
VPC-B2154D-Qx14Fx
VPC-B2155D-Qx14Fx
VPC-B2156D-Qx14Fx



UNLESS OTHERWISE SPECIFIED
DO NOT SCALE DRAWING DIMENSIONS ARE IN MILLIMETERS WITH INCHES REFERENCED (X1) UNLESS OTHERWISE SPECIFIED
DIMENSIONS ARE REFERENCE
3RD ANGLE PROJECTION



VPC,215,ESM

DESCRIPTION
CREATED BY: SWLARSON

CHANGED BY: VTHIMMA

CONFIDENTIAL AND PROPRIETARY INFORMATION
THIS DOCUMENT CONTAINS CONFIDENTIAL AND PROPRIETARY INFORMATION OF ROCKWELL AUTOMATION, INC. AND MAY NOT BE USED, COPIED OR DISCLOSED TO OTHERS, EXCEPT WITH THE AUTHORIZED WRITTEN PERMISSION OF ROCKWELL AUTOMATION, INC.

DATE: 12-13-2019 SHEET 3 OF 5
SIZE: D1R
D 10002385595 03

FIGURE #3

MODEL SHOWN IN FIGURE #3 IS VPC-B2154x-xJ72FS

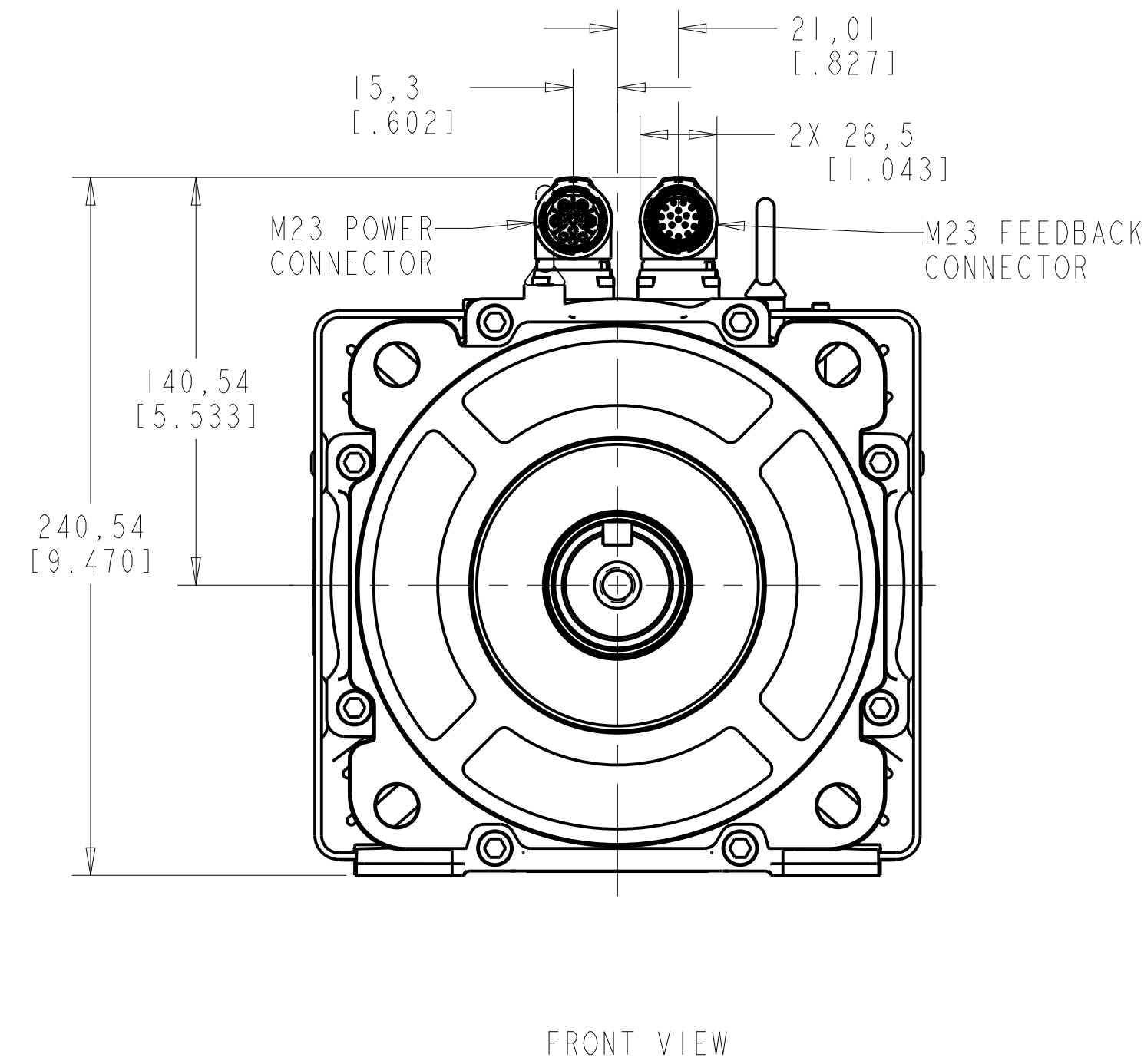
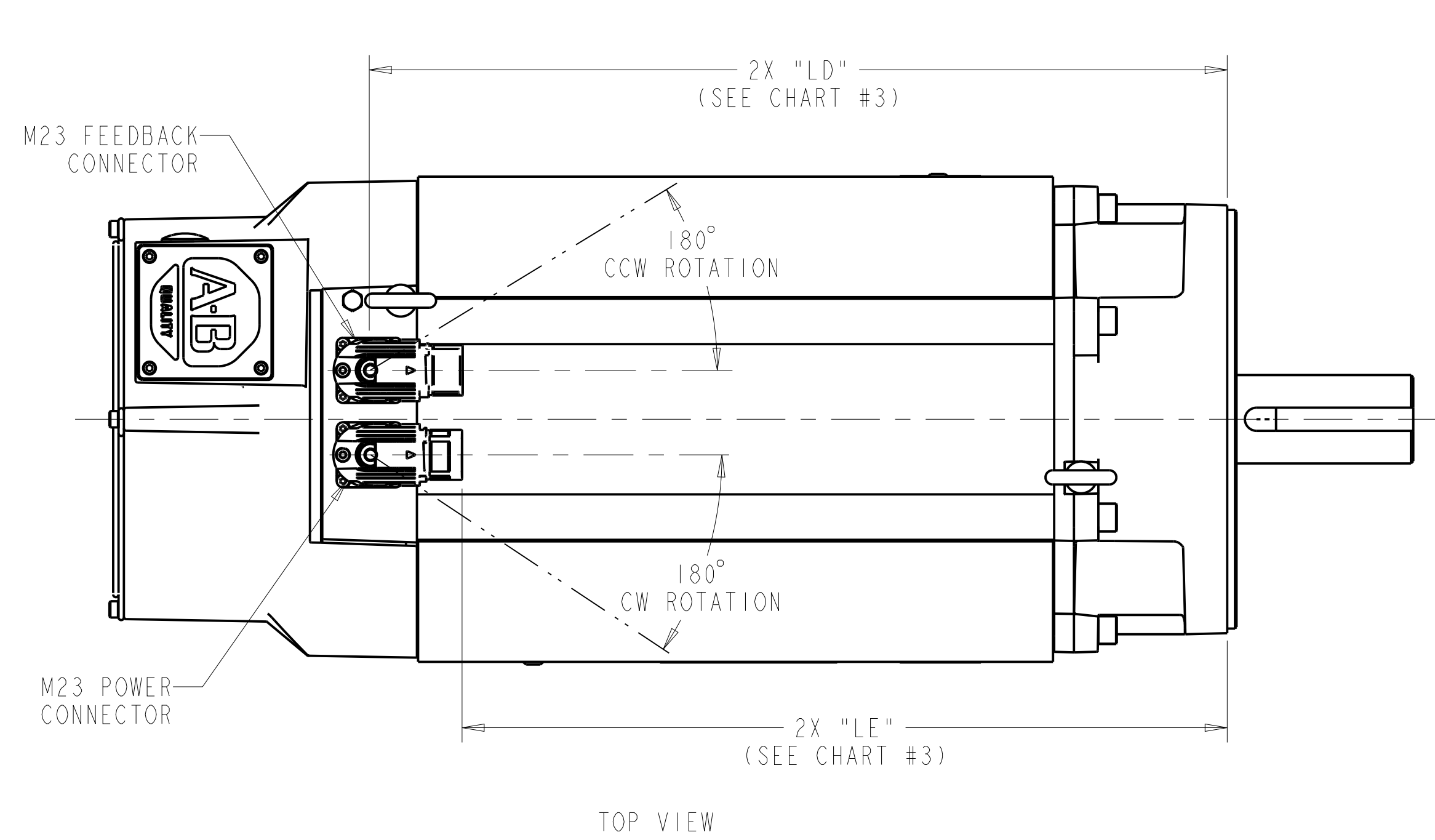
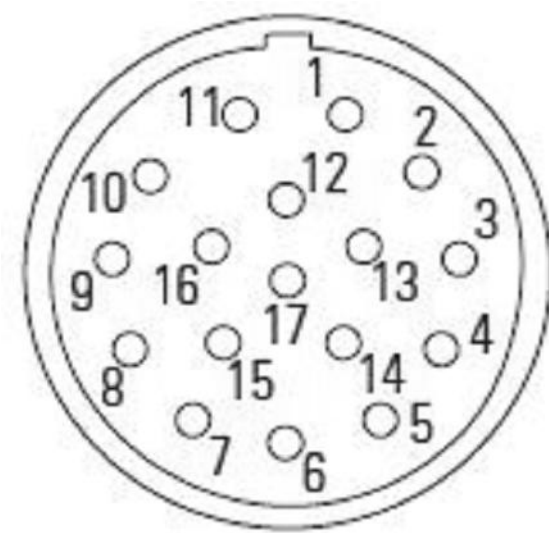


CHART #3 (FOR FIGURE #3)

| FRAME-STACKS | BRAKE OPTION | MOTOR DIMENSIONS | |
|--------------|--------------|------------------|---------------|
| | | LD | LE |
| 215-3 | 2 | 328,4 [12.93] | 288,5 [11.36] |
| | 4 | 409,4 [16.12] | 369,5 [14.55] |
| 215-4 | 2 | 368,9 [14.52] | 329,0 [12.95] |
| | 4 | 449,9 [17.71] | 410,0 [16.14] |

M23 FEEDBACK CONNECTOR PIN-OUTS (FIGURE #3)



21 BIT SINGLE-TURN
FEEDBACK OPTION "S"

| M623 FEEDBACK CONNECTOR | |
|-------------------------|----------|
| PIN ID | FUNCTION |
| 1 | SIN + |
| 2 | SIN - |
| 3 | COS + |
| 4 | COS - |
| 5 | DATA + |
| 6 | DATA - |
| 7-8 | - |
| 9-10 | - |
| 11 | EPWR 9V |
| 12 | ECOM |
| 13 | THERM + |
| 14 | THERM - |
| 15-17 | - |

APPLICABLE CATALOG STRINGS

VPC-B2153x-Sx7x7Fx
VPC-B21549-Sx7x7Fx

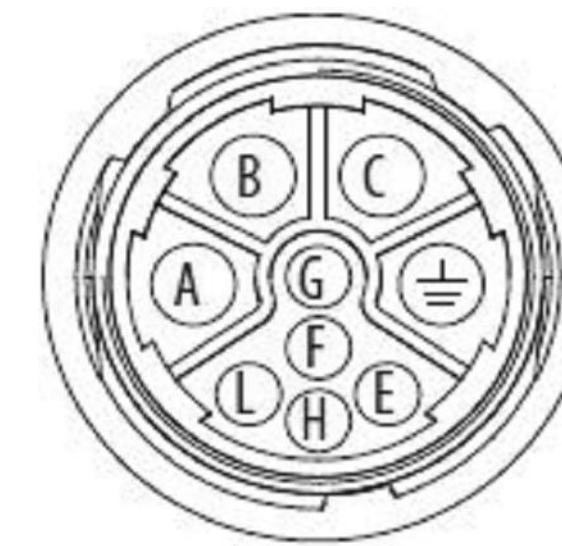
25 BIT MULTI-TURN
FEEDBACK OPTION "Y"

| M623 FEEDBACK CONNECTOR | |
|-------------------------|----------|
| PIN ID | FUNCTION |
| 1-2 | - |
| 3 | CLOCK + |
| 4 | CLOCK - |
| 5 | DATA + |
| 6 | DATA - |
| 7-8 | - |
| 9 | PWR 5V |
| 10 | ECOM |
| 11-12 | - |
| 13 | THERM + |
| 14 | THERM - |
| 15-17 | - |

APPLICABLE CATALOG STRINGS

VPC-B2153x-Yx72Fx
VPC-B21549-Yx72Fx

M23 POWER CONNECTOR PIN-OUTS (FIGURE #3)



NON-BRAKE MOTOR
BRAKE OPTION "2"

| M923 POWER CONNECTOR | |
|----------------------|----------|
| PIN ID | FUNCTION |
| A | U |
| B | V |
| C | W |
| ⊖ | GND |
| E | - |
| F | - |
| G | - |
| H | - |
| L | - |

APPLICABLE CATALOG STRINGS

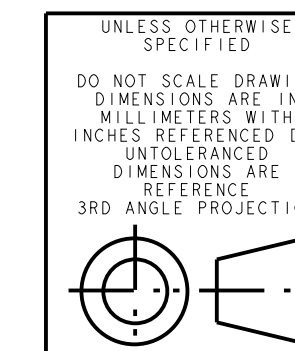
VPC-B2153x-Sx72Fx
VPC-B2153x-Yx72Fx
VPC-B21549-Sx72Fx
VPC-B21549-Yx72Fx

BRAKE MOTOR
BRAKE OPTION "4"

| M923 POWER CONNECTOR | |
|----------------------|----------|
| PIN ID | FUNCTION |
| A | U |
| B | V |
| C | W |
| ⊖ | GND |
| E | - |
| F | MBRK + |
| G | MBRK - |
| H | - |
| L | - |

APPLICABLE CATALOG STRINGS

VPC-B2153x-Sx74Fx
VPC-B21549-Sx74Fx



UNLESS OTHERWISE SPECIFIED
DO NOT SCALE DRAWING DIMENSIONS ARE IN MILLIMETERS WITH INCHES REFERENCED (X1) UNLESS OTHERWISE SPECIFIED DIMENSIONS ARE IN INCHES
3RD ANGLE PROJECTION



VPC,215,ESM

CREATED BY: SWLARSON

CHANGED BY: VTHIMMA

CONFIDENTIAL AND PROPRIETARY INFORMATION
THIS DOCUMENT CONTAINS CONFIDENTIAL AND PROPRIETARY INFORMATION OF ROCKWELL AUTOMATION, INC. AND MAY NOT BE USED, COPIED OR DISCLOSED TO OTHERS, EXCEPT WITH THE AUTHORIZED WRITTEN PERMISSION OF ROCKWELL AUTOMATION, INC.

DATE: 12-13-2019 SHEET 4 OF 5

SIZE: D1R VER: 03

10002385595

FIGURE #4

MODEL SHOWN IN FIGURE #4 IS VPC-B2156x-SJ14FS

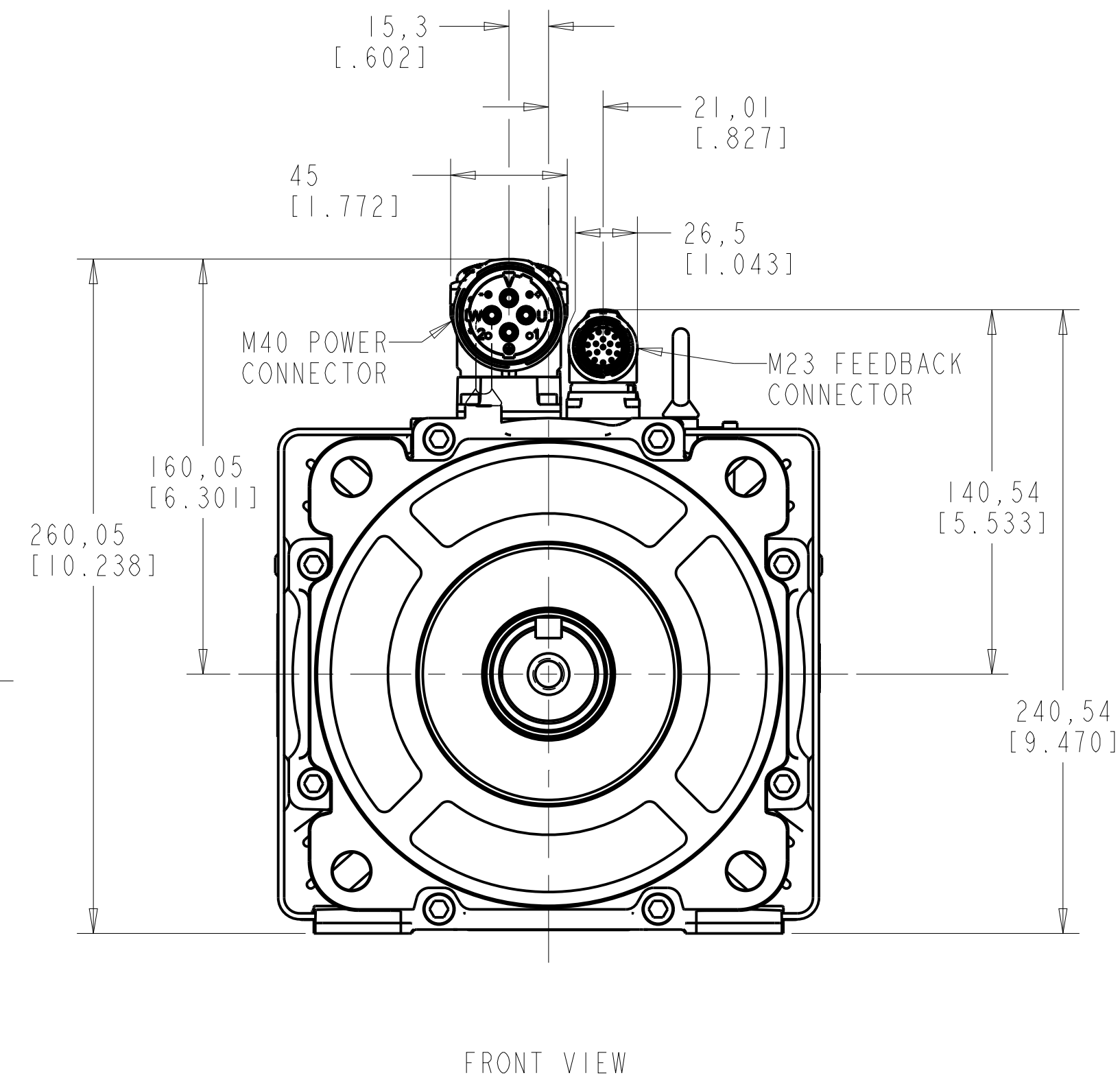
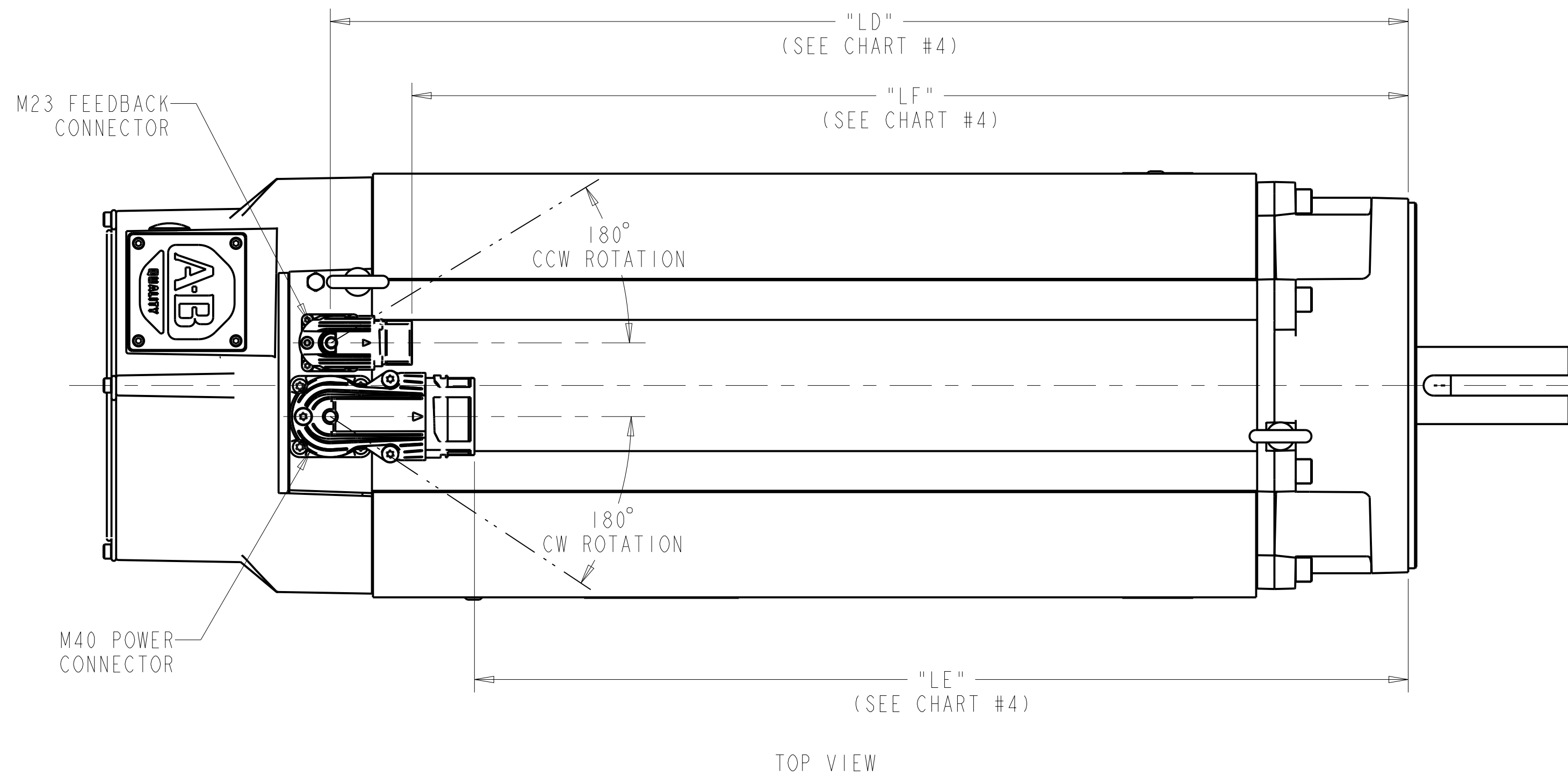
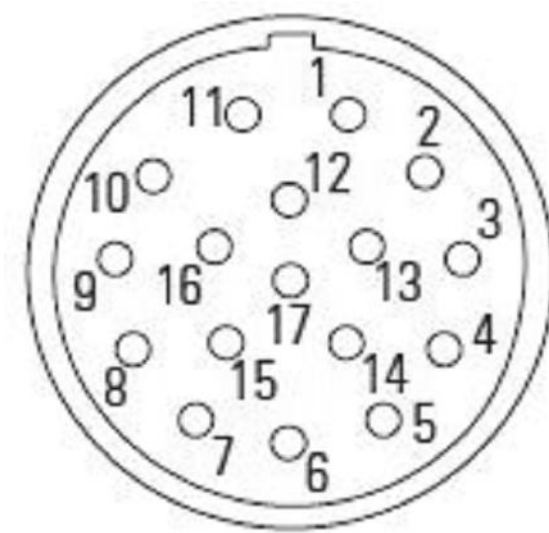


CHART #4 (FOR FIGURE #4)

| FRAME-STACKS | BRAKE OPTION | MOTOR DIMENSIONS | | |
|--------------|--------------|------------------|---------------|---------------|
| | | LD | LF | LE |
| 215-4 | 2 | 368,9 [14.52] | 329,0 [12.95] | 297,9 [11.73] |
| | 4 | 449,9 [17.71] | 410,0 [16.14] | 378,9 [14.92] |
| 215-5 | 2 | 409,4 [16.12] | 369,5 [14.55] | 338,4 [13.32] |
| | 4 | 530,9 [20.90] | 491,0 [19.33] | 459,9 [18.11] |
| 215-6 | 2 | 449,9 [17.71] | 410,0 [16.14] | 378,9 [14.92] |
| | 4 | 530,9 [20.90] | 491,0 [19.33] | 459,9 [18.11] |

M23 FEEDBACK CONNECTOR PIN-OUTS (FIGURE #4)

M40 POWER CONNECTOR PIN-OUTS (FIGURE #4)



21 BIT SINGLE-TURN
FEEDBACK OPTION "S"

| M623 FEEDBACK CONNECTOR | |
|-------------------------|----------|
| PIN ID | FUNCTION |
| 1 | SIN + |
| 2 | SIN - |
| 3 | COS + |
| 4 | COS - |
| 5 | DATA + |
| 6 | DATA - |
| 7-8 | - |
| 9-10 | - |
| 11 | EPWR 9V |
| 12 | ECOM |
| 13 | THERM + |
| 14 | THERM - |
| 15-17 | - |

APPLICABLE CATALOG STRINGS

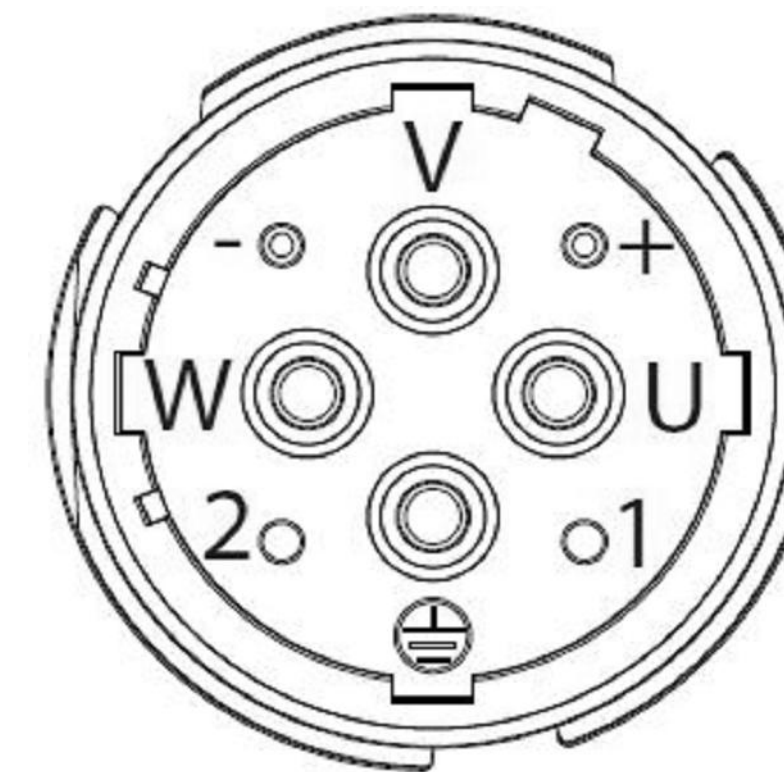
| |
|-------------------|
| VPC-B2154A-Sx7xFx |
| VPC-B2154D-Sx7xFx |
| VPC-B2155D-Sx7xFx |
| VPC-B2156D-Sx7xFx |

25 BIT MULTI-TURN
FEEDBACK OPTION "Y"

| M623 FEEDBACK CONNECTOR | |
|-------------------------|----------|
| PIN ID | FUNCTION |
| 1-2 | - |
| 3 | CLOCK + |
| 4 | CLOCK - |
| 5 | DATA + |
| 6 | DATA - |
| 7-8 | - |
| 9 | PWR 5V |
| 10 | COMMON |
| 11-12 | - |
| 13 | THERM + |
| 14 | THERM - |
| 15-17 | - |

APPLICABLE CATALOG STRINGS

| |
|-------------------|
| VPC-B2154A-Yx72Fx |
| VPC-B2154D-Yx72Fx |
| VPC-B2155D-Yx72Fx |
| VPC-B2156D-Yx72Fx |



NON-BRAKE MOTOR
BRAKE OPTION "2"

| M940 POWER CONNECTOR | |
|----------------------|----------|
| PIN ID | FUNCTION |
| U | U |
| V | V |
| W | W |
| ⊕ | GND |
| + | - |
| - | - |
| 1 | - |
| 2 | - |

APPLICABLE CATALOG STRINGS

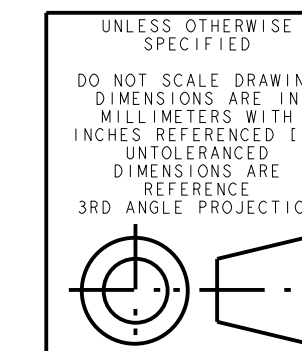
| |
|-------------------|
| VPC-B2154A-Sx72Fx |
| VPC-B2154A-Yx72Fx |
| VPC-B2154D-Sx72Fx |
| VPC-B2154D-Yx72Fx |
| VPC-B2155D-Sx72Fx |
| VPC-B2155D-Yx72Fx |
| VPC-B2156D-Sx72Fx |
| VPC-B2156D-Yx72Fx |

BRAKE MOTOR
BRAKE OPTION "4"

| M940 POWER CONNECTOR | |
|----------------------|----------|
| PIN ID | FUNCTION |
| U | U |
| V | V |
| W | W |
| ⊕ | GND |
| + | MBRK + |
| - | MBRK - |
| 1 | - |
| 2 | - |

APPLICABLE CATALOG STRINGS

| |
|-------------------|
| VPC-B2154A-Sx74Fx |
| VPC-B2154D-Sx74Fx |
| VPC-B2155D-Sx74Fx |
| VPC-B2156D-Sx74Fx |



UNLESS OTHERWISE SPECIFIED
DO NOT SCALE DRAWING DIMENSIONS ARE IN MILLIMETERS WITH INCHES REFERENCED (X) UNLESS OTHERWISE SPECIFIED
DIMENSIONS ARE IN MILLIMETERS
3RD ANGLE PROJECTION



VPC,215,ESM

CREATED BY: SWLARSON

CHANGED BY: VTHIMMA

CONFIDENTIAL AND PROPRIETARY INFORMATION
THIS DOCUMENT CONTAINS CONFIDENTIAL AND PROPRIETARY INFORMATION OF ROCKWELL AUTOMATION, INC. AND MAY NOT BE USED, COPIED OR DISCLOSED TO OTHERS, EXCEPT WITH THE AUTHORIZED WRITTEN PERMISSION OF ROCKWELL AUTOMATION, INC.

DATE: 12-13-2019 SHEET 5 OF 5

SIZE D1R VER

D 10002385595 03