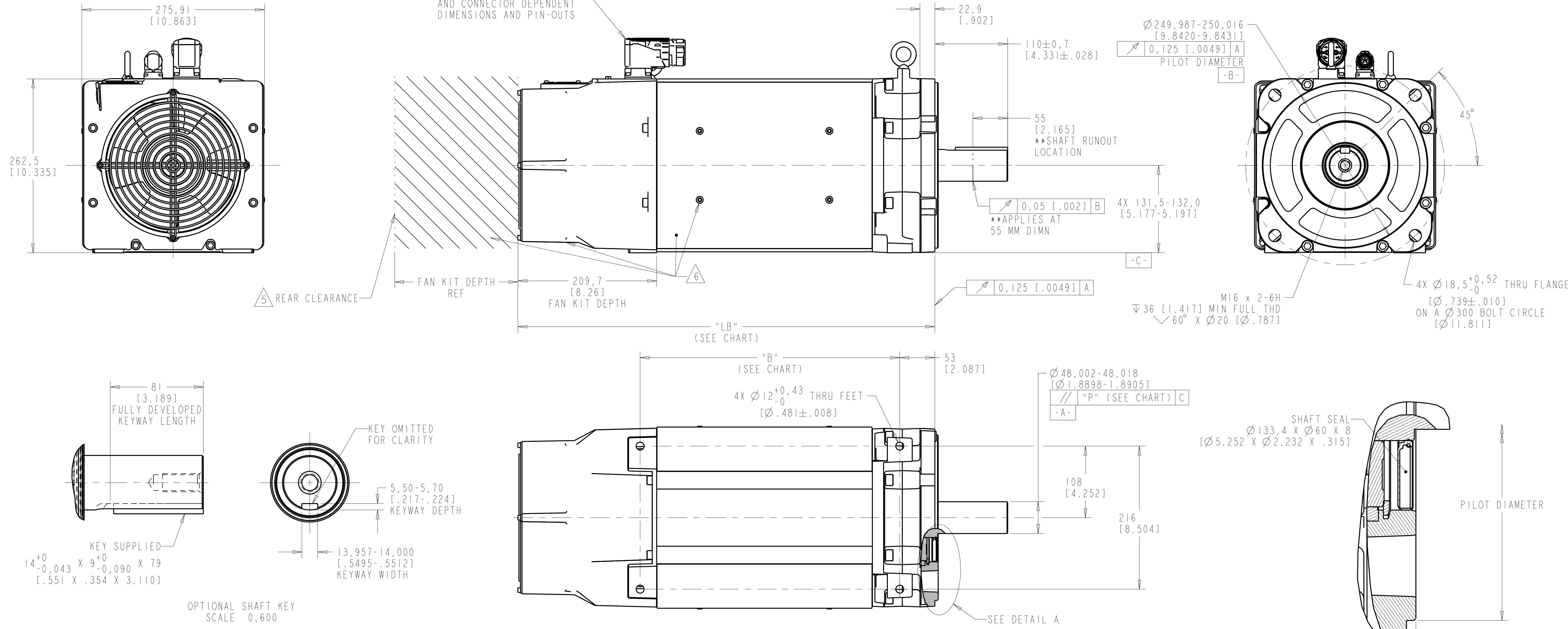
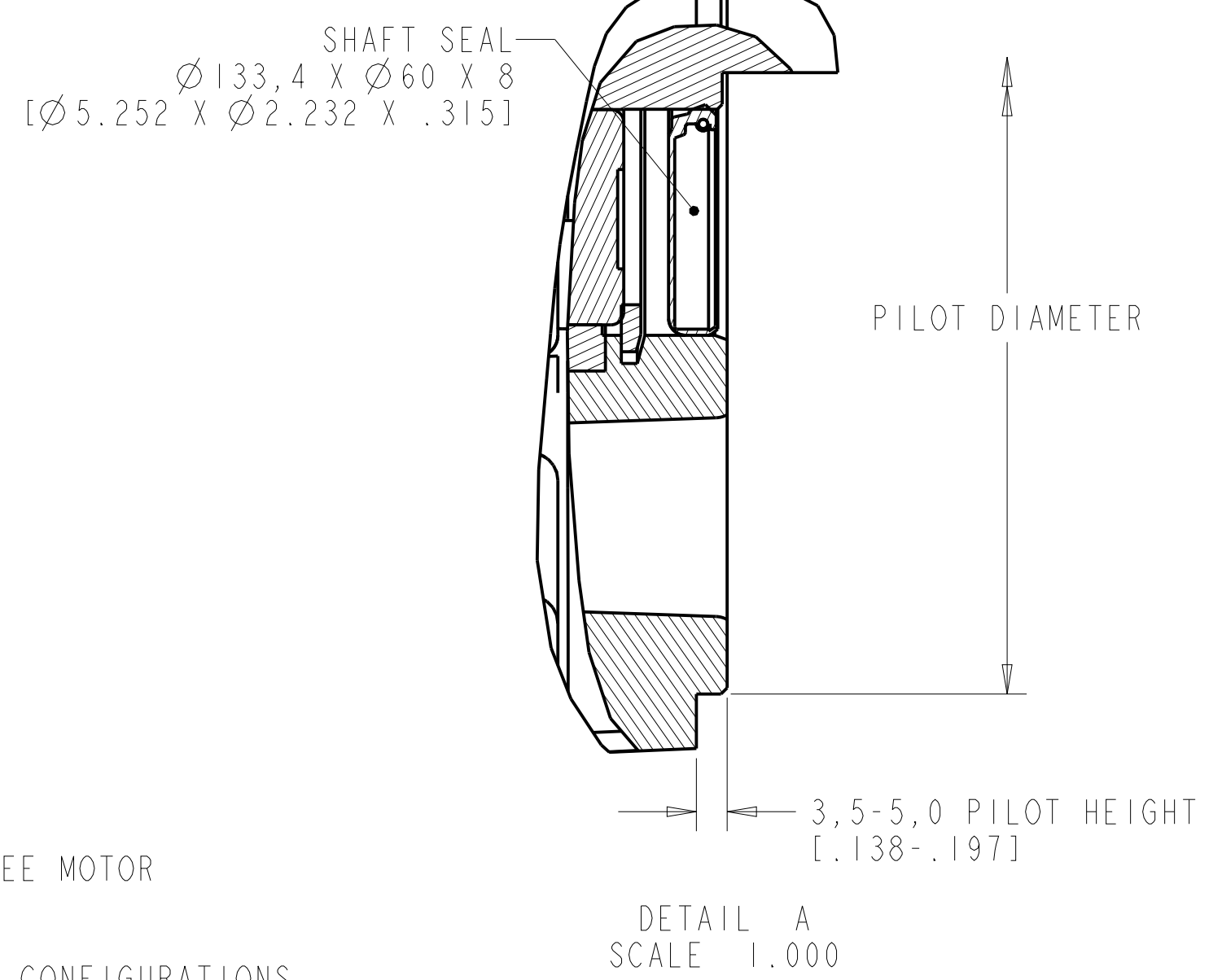


MODEL SHOWN ON THIS SHEET IS VPC-B3004x-SJ72FS

SEE SHEETS 3,4,& 5 FOR FEEDBACK AND CONNECTOR DEPENDENT DIMENSIONS AND PIN-OUTS



OPTIONAL SHAFT KEY SCALE 0.600



NOTES:

- DXF OF THIS DRAWING MUST BE SCALED TO LENGTH. SEE MOTOR DIMENSIONS CHART.
- 3D STEP (.stp) FILES ARE AVAILABLE FOR ALL MOTOR CONFIGURATIONS.
- FOR ADDITIONAL SPECIFICATIONS SEE ESE DRAWING DIR 10001892617.
- VPC CATALOG STRING CODES:  
 BRAKE:  
 2 = NO BRAKE  
 4 = BRAKE  
 RATED SPEED:  
 A = 1500 RPM  
 D = 3000 RPM  
 FEEDBACK TYPE:  
 S = 21 BIT SINGLE-TURN (HIPERFACE)  
 M = 21 BIT MULTI-TURN (HIPERFACE)  
 Q = 23 BIT MULTI-TURN (HIPERFACE DSL)  
 Y = 25 BIT MULTI-TURN (ENDAT 2.2)  
 COOLING:  
 A = NATURAL CONVECTION (FAN-LESS)  
 F = FORCED VENTILATION (WITH FAN-KIT)

5. FOR SUFFICIENT AIRFLOW AND SPACE FOR FAN KIT REMOVAL AND INSTALLATION, ENSURE THERE IS SPACE GREATER THAN OR EQUAL TO THAT OF THE FAN KIT DEPTH BEYOND THE REAR OF THE MOTOR (SHOWN). ONLY APPLICABLE FOR CATALOGS WITH FAN-KIT.

6. DIMENSIONS AND PARTS NOT APPLICABLE FOR FANLESS CATALOG CONFIGURATIONS.

FRAME-STACKS	BRAKE OPTION	MOTOR DIMENSIONS				RATED SPEED	FEEDBACK TYPE			
		LB	LB-FANLESS	B	P		S	M	Q	Y
300-2	2	582,1 [22.92]	468.83 [18.46]	344,7 [13.57]	0,8 [.03]	9	SEE FIGURE 2,SH 4	N/A	SEE FIGURE 1,SH 3	SEE FIGURE 2,SH 4
	4	629,6 [24.79]	516.33 [20.33]	392,2 [15.44]	0,8 [.03]	9	SEE FIGURE 2,SH 4	N/A	SEE FIGURE 1,SH 3	N/A
300-3	2	582,1 [22.92]	468.57 [18.45]	344,7 [13.57]	0,8 [.03]	9	SEE FIGURE 2,SH 4	N/A	SEE FIGURE 1,SH 3	SEE FIGURE 2,SH 4
	4	677,1 [26.66]	563.57 [22.12]	439,7 [17.31]	1,0 [.04]	9	SEE FIGURE 2,SH 4	N/A	SEE FIGURE 1,SH 3	N/A
300-4	2	629,6 [24.79]	516.33 [20.32]	392,2 [15.44]	1,0 [.04]	9	SEE FIGURE 2,SH 4	N/A	SEE FIGURE 1,SH 3	SEE FIGURE 2,SH 4
						A	SEE FIGURE 3,SH 5	SEE FIGURE 3,SH 5	N/A	SEE FIGURE 3,SH 5
	4	772,1 [30.40]	658.83 [25.94]	534,7 [21.05]	1,0 [.04]	9	SEE FIGURE 2,SH 4	N/A	SEE FIGURE 1,SH 3	N/A
						A	SEE FIGURE 3,SH 5	SEE FIGURE 3,SH 5	N/A	N/A

UNLESS OTHERWISE SPECIFIED  
 DO NOT SCALE DRAWING DIMENSIONS ARE IN MILLIMETERS WITH INCHES REFERENCED (X) UNLESS OTHERWISE SPECIFIED  
 DIMENSIONS ARE REFERENCE  
 3RD ANGLE PROJECTION

**RA Rockwell Automation**

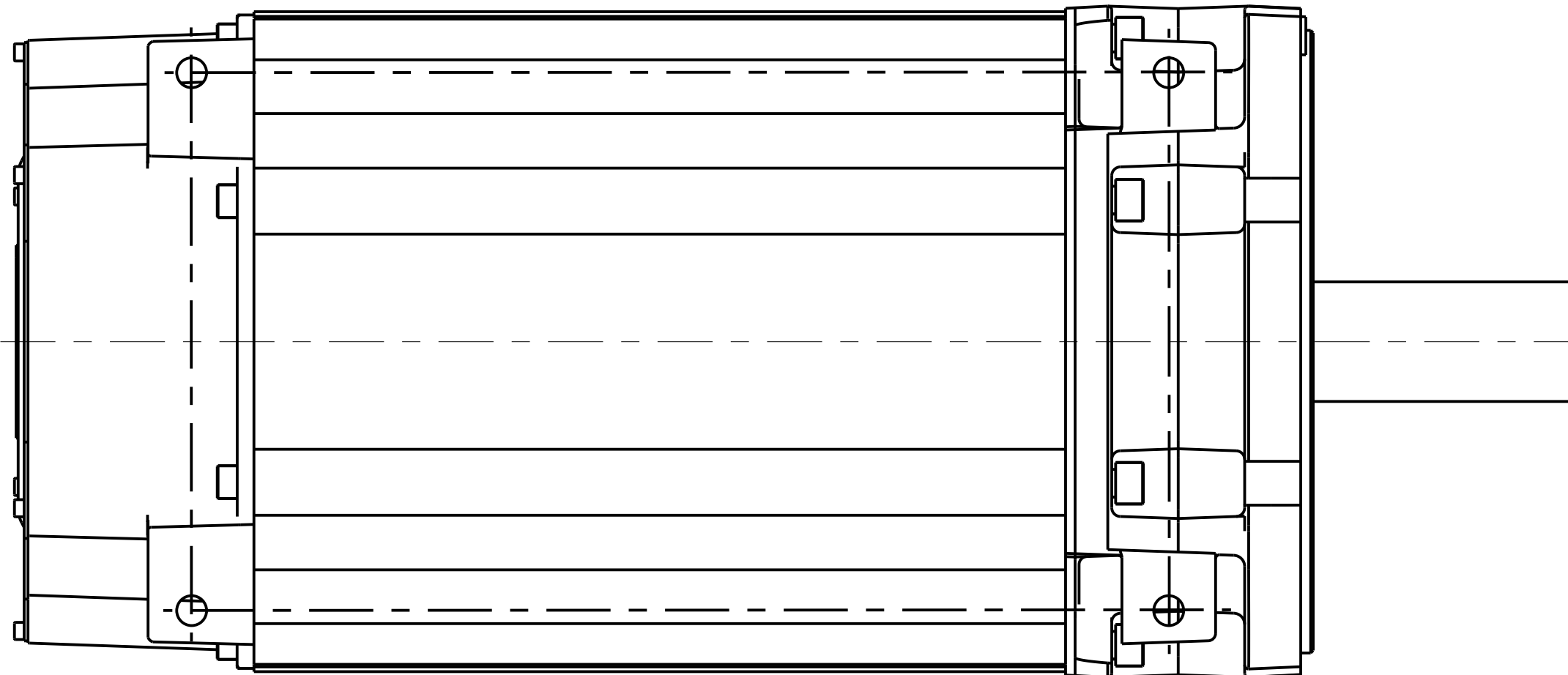
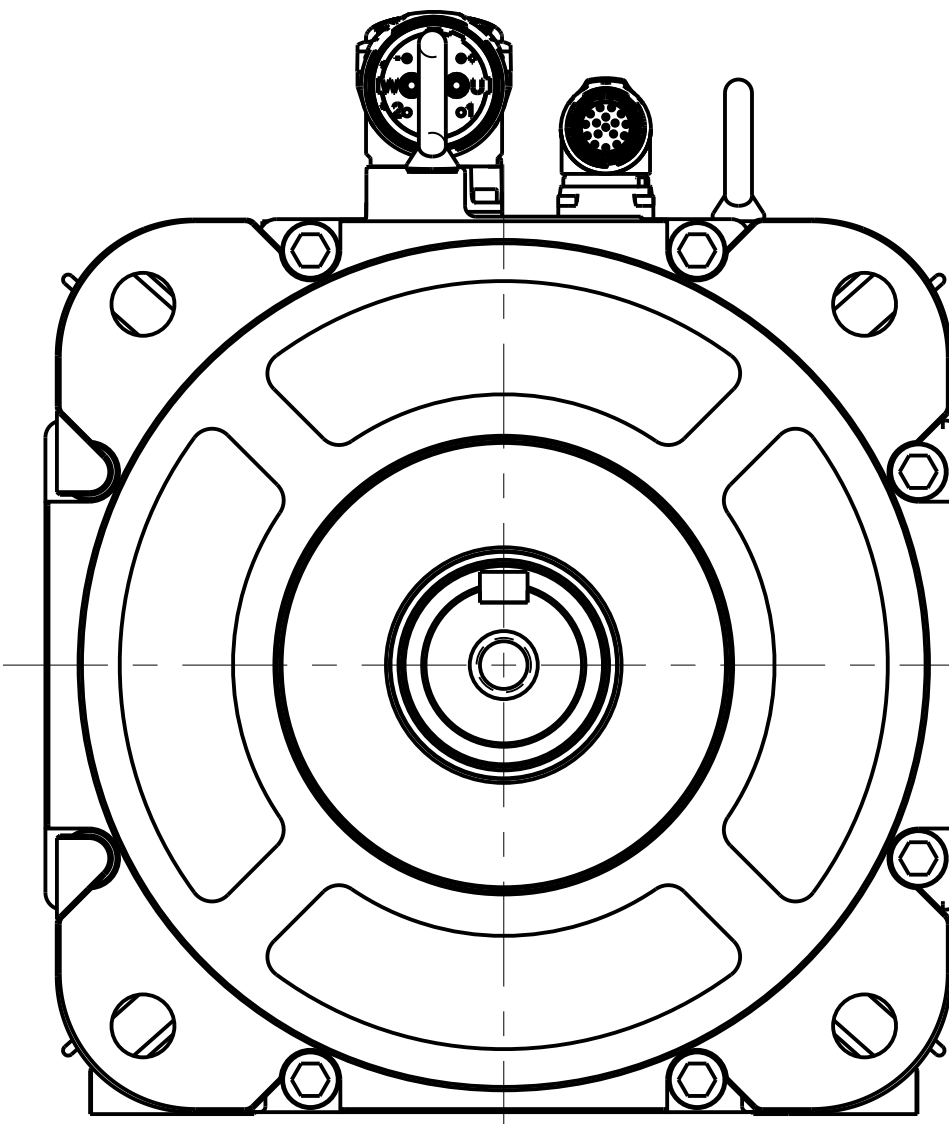
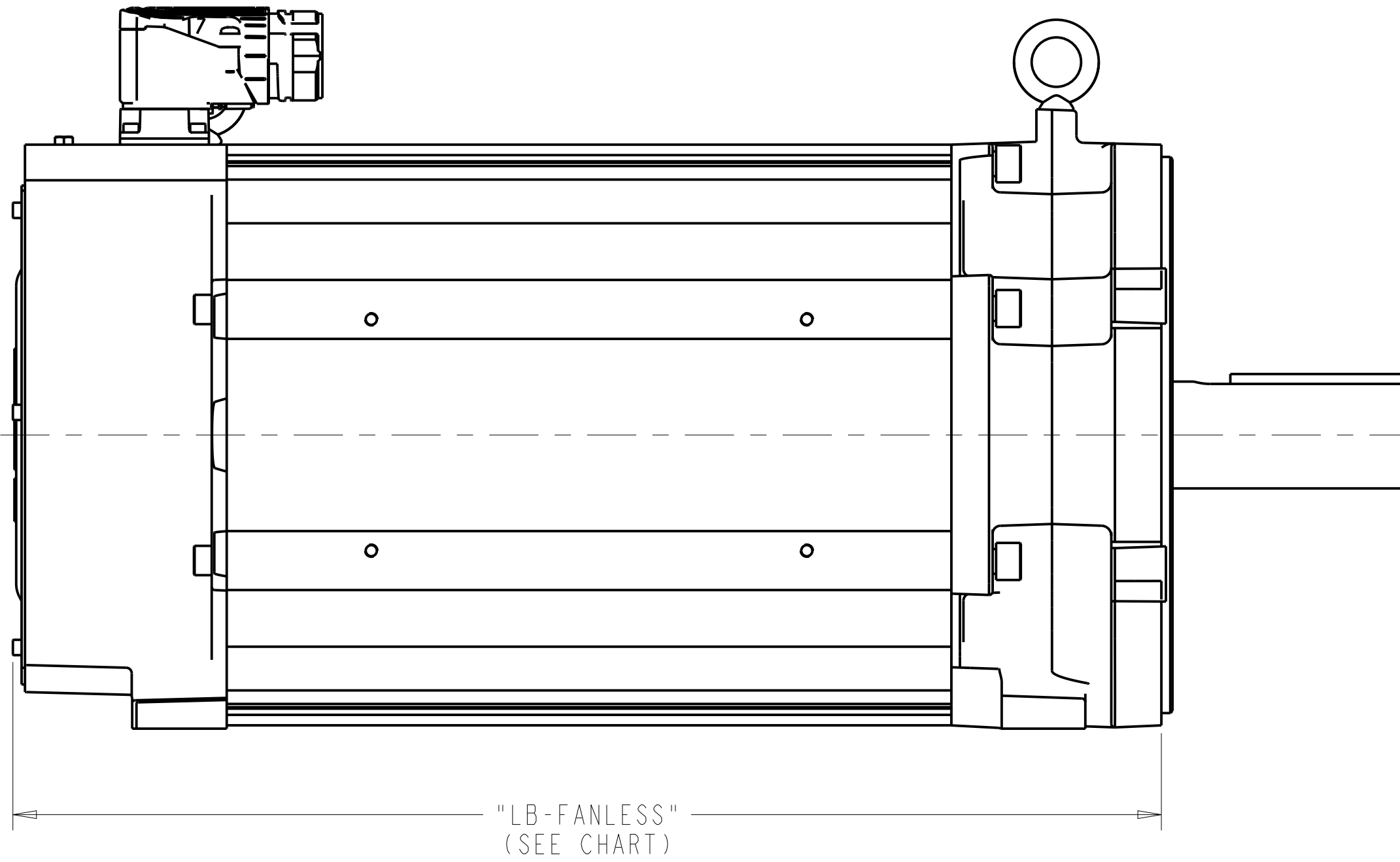
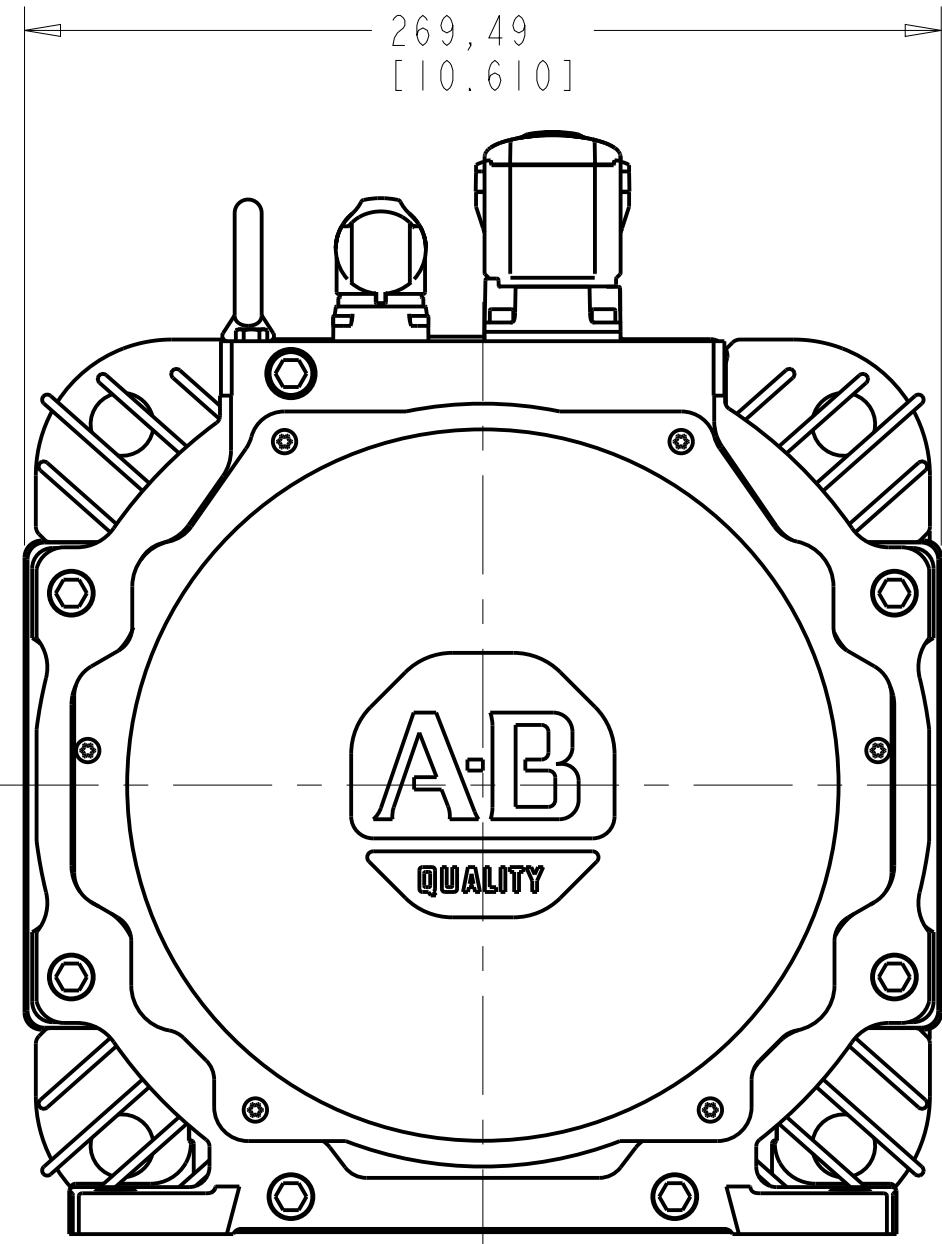
VPC, F300, ESM

DATE: 11-20-2019 SHEET 1 OF 5  
 SIZE DIR VER  
 D 10002434953 04

CREATED BY: JMEREDIG CHANGED BY: VTHIMMA

# FAN-LESS MOTOR CONFIGURATIONS

MODEL SHOWN ON THIS SHEET IS VPC-B3004x-SJ72AS



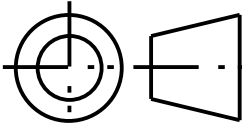

<small>UNLESS OTHERWISE SPECIFIED: DO NOT SCALE DRAWING DIMENSIONS ARE IN MILLIMETERS WITH INCHES REFERENCED (X) DIMENSIONS ARE REFERENCE 3RD ANGLE PROJECTION</small> 	 <p><b>Rockwell Automation</b></p> <p>VPC, F300, ESM</p> <p>CREATED BY: JMEREDIG      CHANGED BY: VTHIMMA</p>	<small>CONFIDENTIAL AND PROPRIETARY INFORMATION THIS DOCUMENT CONTAINS CONFIDENTIAL AND PROPRIETARY INFORMATION OF ROCKWELL AUTOMATION, INC. AND MAY NOT BE USED, COPIED OR DISCLOSED TO OTHERS, EXCEPT WITH THE AUTHORIZED WRITTEN PERMISSION OF ROCKWELL AUTOMATION, INC.</small>	
		<small>DATE: 11-20-2019</small>	<small>SHEET 2 OF 5</small>
<small>DESCRIPTION</small>	<small>SIZE</small>	<small>DIR</small>	<small>VER</small>
	D	10002434953	04

FIGURE #1

MODEL SHOWN IN FIGURE #1 IS VPC-B3002x-QJ12FS

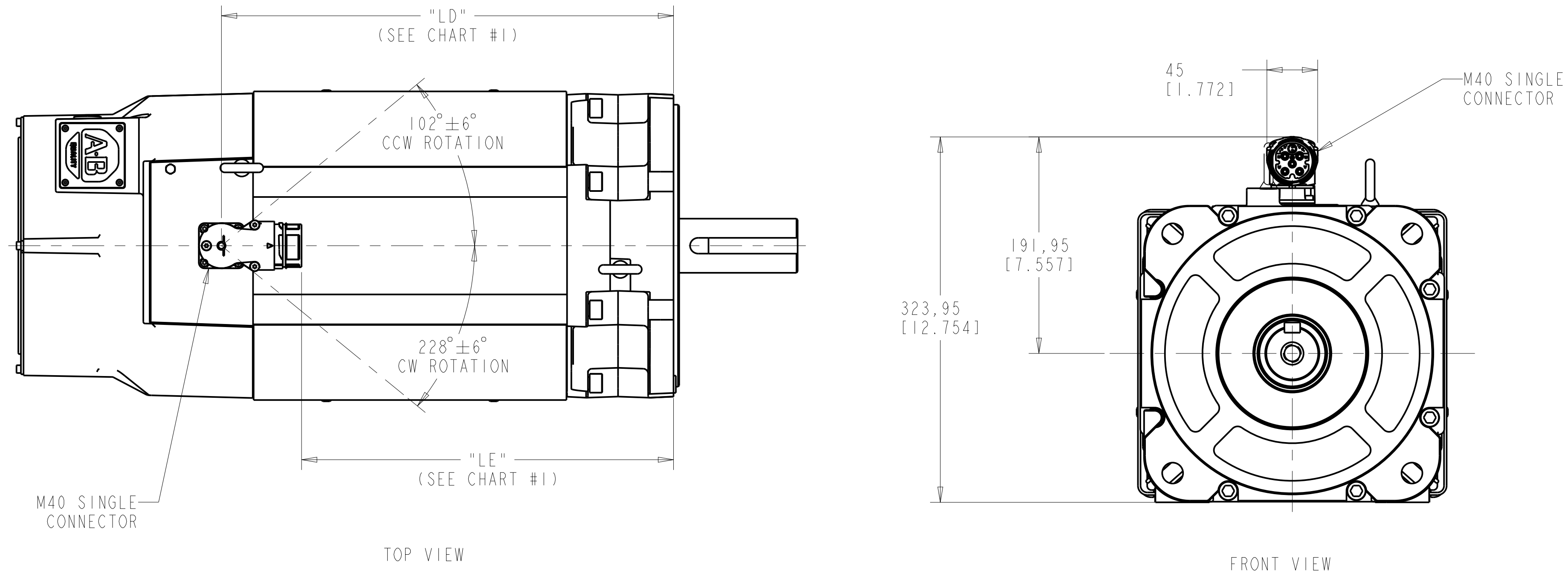
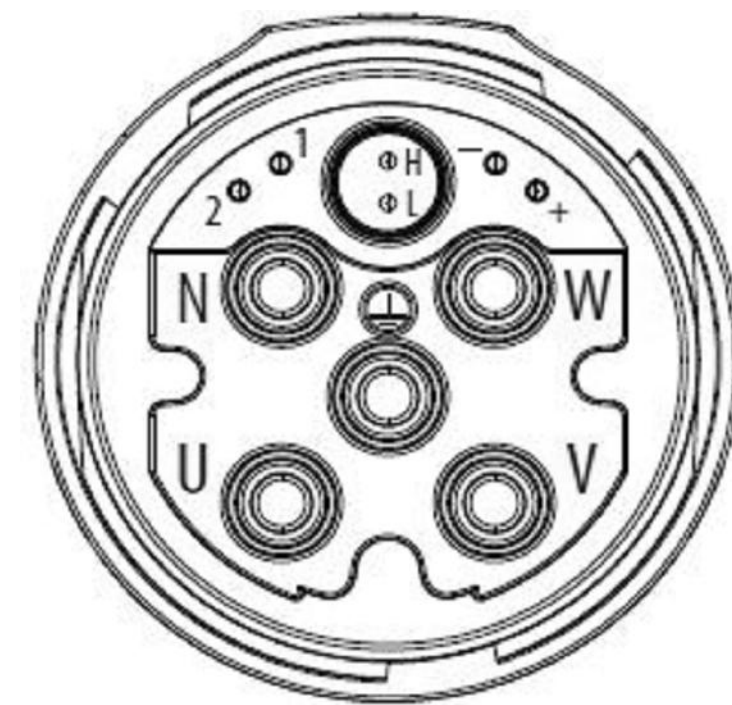


CHART #1 (FOR FIGURE #1)

FRAME-STACKS	BRAKE OPTION	MOTOR DIMENSIONS	
		LD	LE
300-2	2	400,7 [15.78]	329,7 [12.98]
	4	448,2 [17.65]	377,2 [14.85]
300-3	2	400,7 [15.78]	329,7 [12.98]
	4	495,7 [19.52]	424,7 [16.72]
300-4	2	448,2 [17.65]	377,2 [14.85]
	4	590,7 [23.26]	519,7 [20.46]

SINGLE M40 CONNECTOR PIN-OUTS (FIGURE #1)



NON-BRAKE MOTOR  
BRAKE OPTION "2"

M740 SINGLE CONNECTOR	
PIN ID	FUNCTION
U	U
V	V
W	W
⊖	GND
1	-
2	-
L	DSL +
H	DSL -
+	-
-	-
N	-

APPLICABLE CATALOG STRINGS

VPC-B30029-Qx12Fx
VPC-B30039-Qx12Fx
VPC-B30049-Qx12Fx
VPC-B3002A-Qx12Fx
VPC-B3003A-Qx12Fx

BRAKE MOTOR  
BRAKE OPTION "4"

M740 SINGLE CONNECTOR	
PIN ID	FUNCTION
U	U
V	V
W	W
⊖	GND
1	MBRK +
2	MBRK -
L	DSL +
H	DSL -
+	-
-	-
N	-

APPLICABLE CATALOG STRINGS

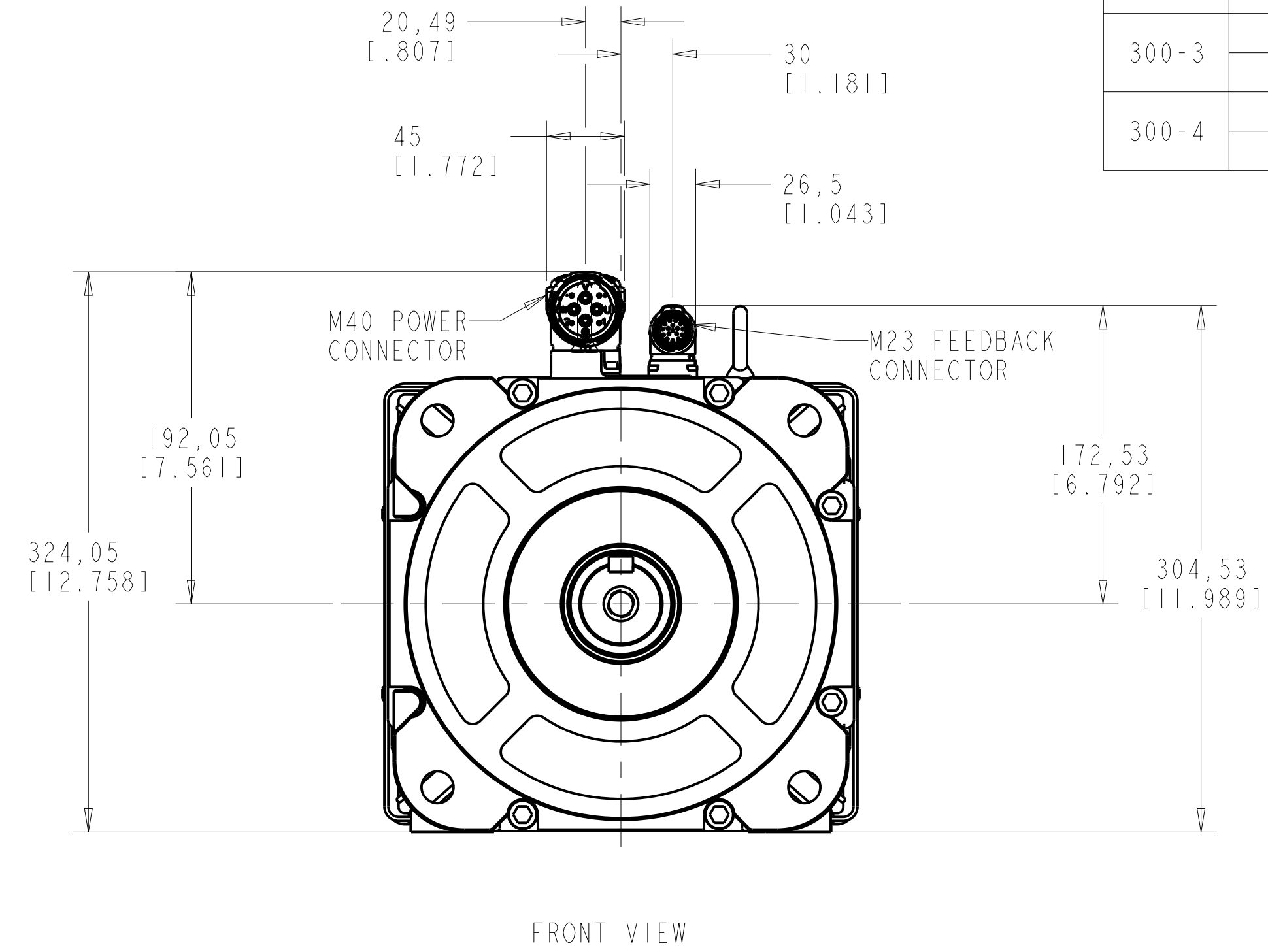
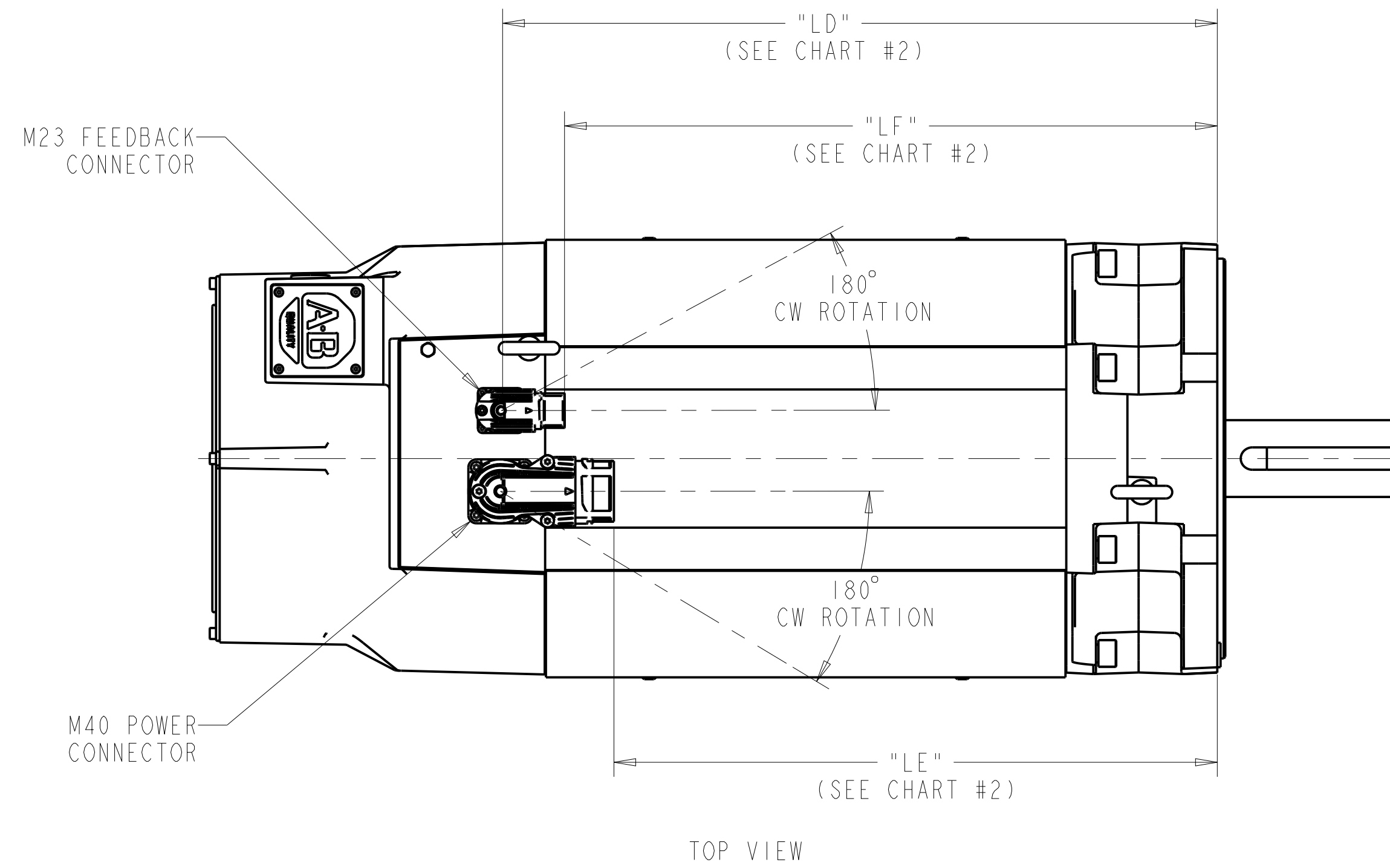
VPC-B30029-Qx14Fx
VPC-B30039-Qx14Fx
VPC-B30049-Qx14Fx
VPC-B3002A-Qx14Fx
VPC-B3003A-Qx14Fx

<small>UNLESS OTHERWISE SPECIFIED</small> DO NOT SCALE DRAWING DIMENSIONS ARE IN MILLIMETERS WITH INCHES REFERENCED (X1) UNLESS OTHERWISE SPECIFIED 3RD ANGLE PROJECTION		CONFIDENTIAL AND PROPRIETARY INFORMATION. THIS DOCUMENT CONTAINS CONFIDENTIAL AND PROPRIETARY INFORMATION OF ROCKWELL AUTOMATION, INC. AND MAY NOT BE USED, COPIED OR DISCLOSED TO OTHERS, EXCEPT WITH THE AUTHORIZED WRITTEN PERMISSION OF ROCKWELL AUTOMATION, INC.	
		VPC, F300, ESM	DATE: 11-20-2019 SHEET 3 OF 5
CREATED BY: JMEREDIG	CHANGED BY: VTHIMMA	SIZE: D	VER: 04 10002434953

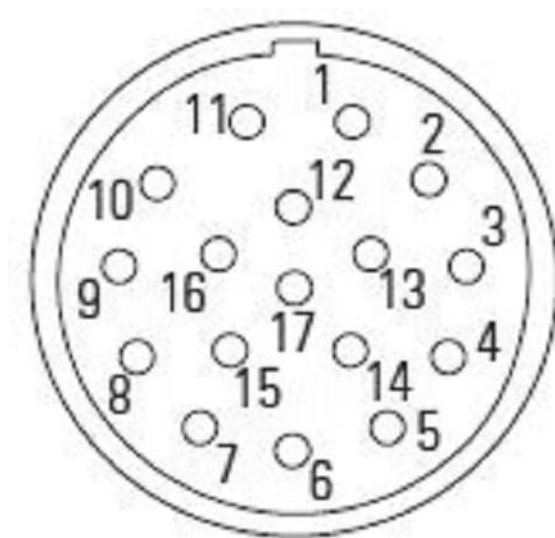
FIGURE #2

MODEL SHOWN IN FIGURE #2 IS VPC-B3004x-xJ72FS

CHART #2 (FOR FIGURE #2)				
FRAME-STACKS	BRAKE OPTION	MOTOR DIMENSIONS		
		LD	LF	LE
300-2	2	400,7 [15.78]	360,7 [14.20]	329,7 [12.98]
	4	448,2 [17.65]	408,2 [16.07]	377,2 [14.85]
300-3	2	400,7 [15.78]	360,7 [14.20]	329,7 [12.98]
	4	495,7 [19.52]	455,7 [17.94]	424,7 [16.72]
300-4	2	448,2 [17.65]	408,2 [16.07]	377,2 [14.85]
	4	590,7 [23.26]	550,7 [21.68]	519,7 [20.46]



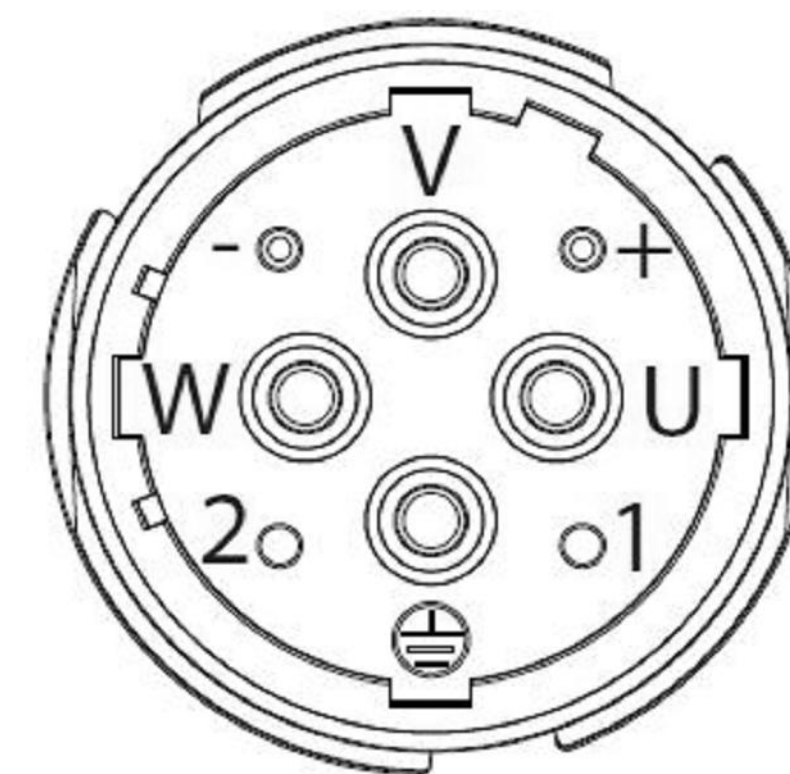
M23 FEEDBACK CONNECTOR PIN-OUTS (FIGURE #2)



21 BIT SINGLE-TURN FEEDBACK OPTION "S"	
M623 FEEDBACK CONNECTOR	
PIN ID	FUNCTION
1	SIN +
2	SIN -
3	COS +
4	COS -
5	DATA +
6	DATA -
7-8	-
9-10	-
11	EPWR 9V
12	ECOM
13	THERM +
14	THERM -
15-17	-
APPLICABLE CATALOG STRINGS	
VPC-B3002x-Sx7xFx	
VPC-B3003x-Sx7xFx	
VPC-B30049-Sx7xFx	

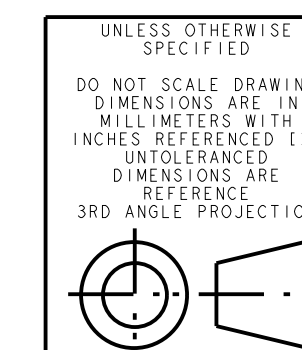
25 BIT MULTI-TURN FEEDBACK OPTION "Y"	
M623 FEEDBACK CONNECTOR	
PIN ID	FUNCTION
1-2	-
3	CLOCK +
4	CLOCK -
5	DATA +
6	DATA -
7-8	-
9	PWR 5V
10	ECOM
11-12	-
13	THERM +
14	THERM -
15-17	-
APPLICABLE CATALOG STRINGS	
VPC-B3002x-Yx72Fx	
VPC-B3003x-Yx72Fx	
VPC-B30049-Yx72Fx	

M40 POWER CONNECTOR PIN-OUTS (FIGURE #2)



NON-BRAKE MOTOR BRAKE OPTION "2"	
M940 POWER CONNECTOR	
PIN ID	FUNCTION
U	U
V	V
W	W
⊕	GND
+	-
-	-
1	-
2	-
APPLICABLE CATALOG STRINGS	
VPC-B3002x-Sx72Fx	
VPC-B3002x-Yx72Fx	
VPC-B3003x-Sx72Fx	
VPC-B3003x-Yx72Fx	
VPC-B30049-Sx72Fx	
VPC-B30049-Yx72Fx	

BRAKE MOTOR BRAKE OPTION "4"	
M940 POWER CONNECTOR	
PIN ID	FUNCTION
U	U
V	V
W	W
⊕	GND
+	MBRK +
-	MBRK -
1	-
2	-
APPLICABLE CATALOG STRINGS	
VPC-B3002x-Sx74Fx	
VPC-B3003x-Sx74Fx	
VPC-B30049-Sx74Fx	



DESCRIPTION



VPC, F300, ESM

CREATED BY: JMEREDIG

CHANGED BY: VTHIMMA

CONFIDENTIAL AND PROPRIETARY INFORMATION. THIS DOCUMENT CONTAINS CONFIDENTIAL AND PROPRIETARY INFORMATION OF ROCKWELL AUTOMATION, INC. AND MAY NOT BE USED, COPIED OR DISCLOSED TO OTHERS, EXCEPT WITH THE AUTHORIZED WRITTEN PERMISSION OF ROCKWELL AUTOMATION, INC.

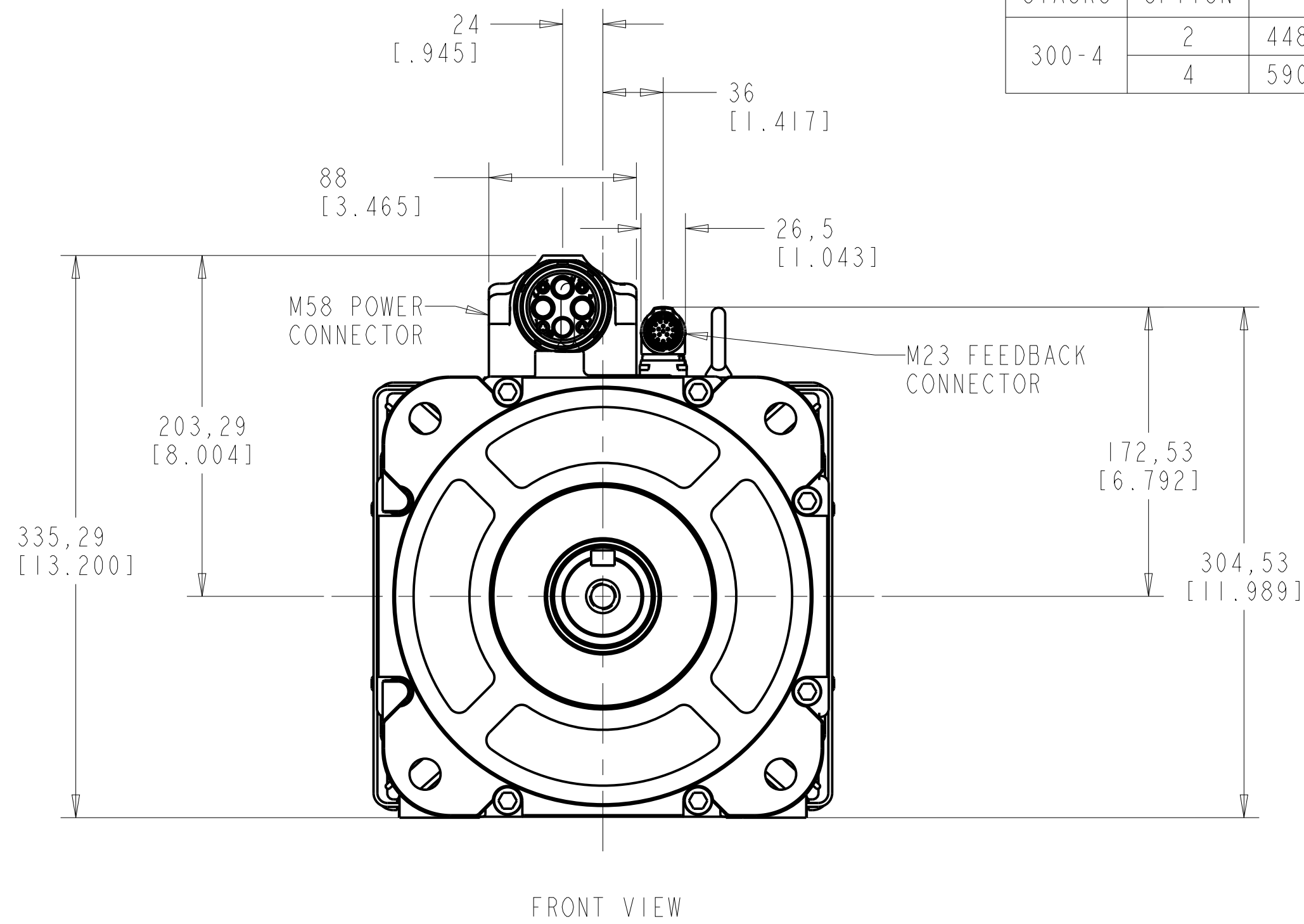
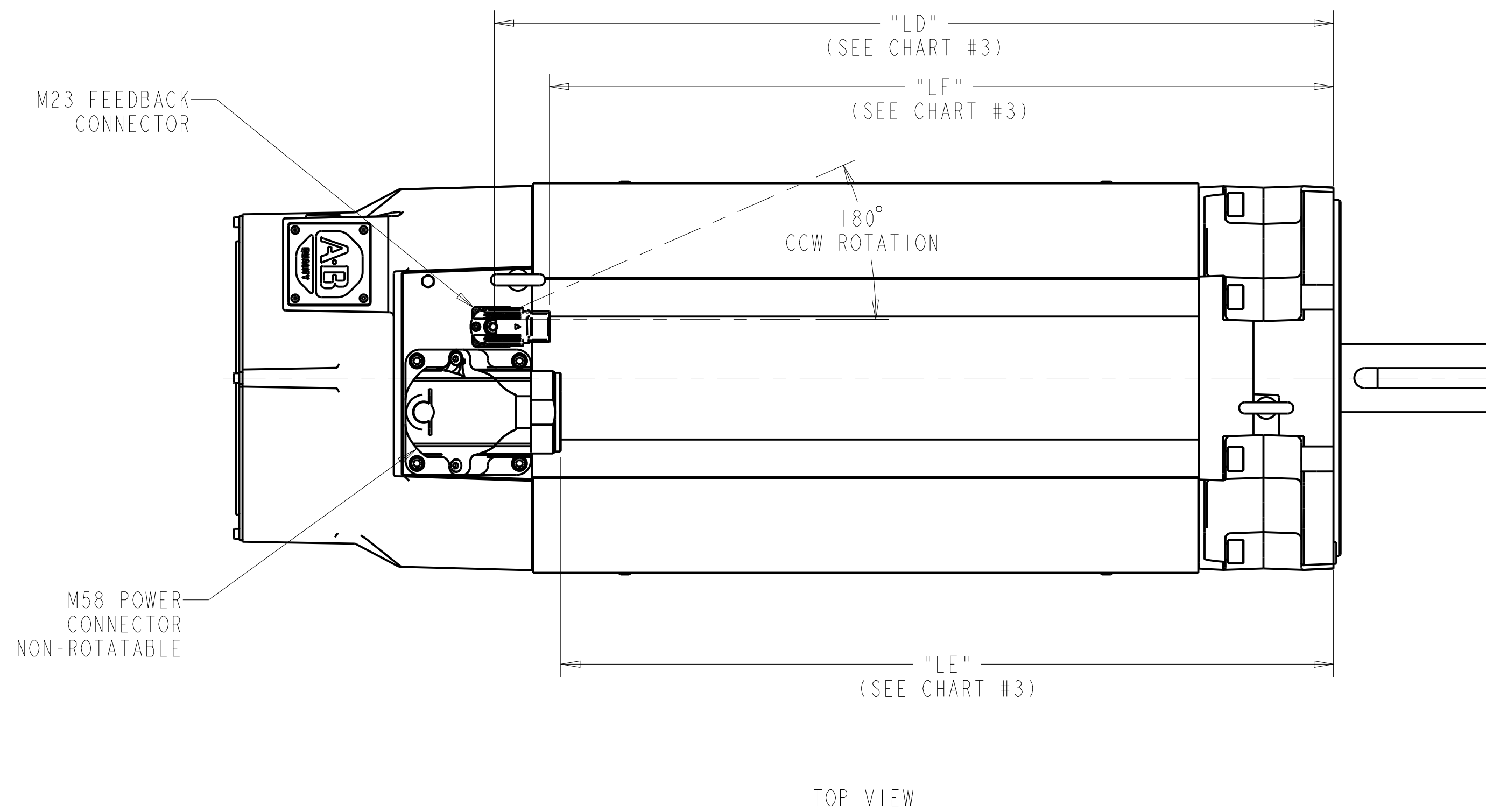
DATE: 11-20-2019 SHEET 4 OF 5

SIZE: D1R VER:

D 10002434953 04

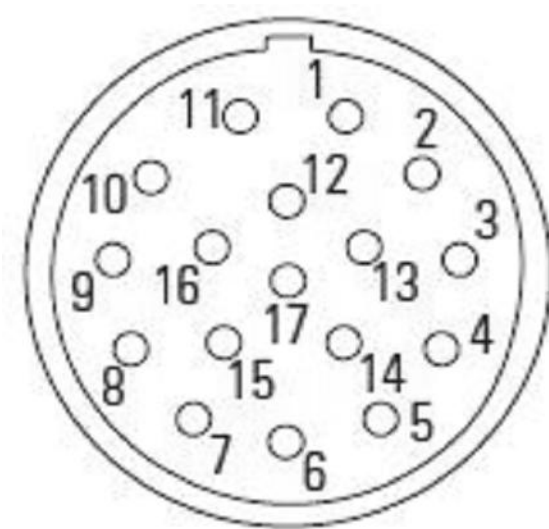
FIGURE #3

MODEL SHOWN IN FIGURE #3 IS VPC-B3004x-xJ74FS



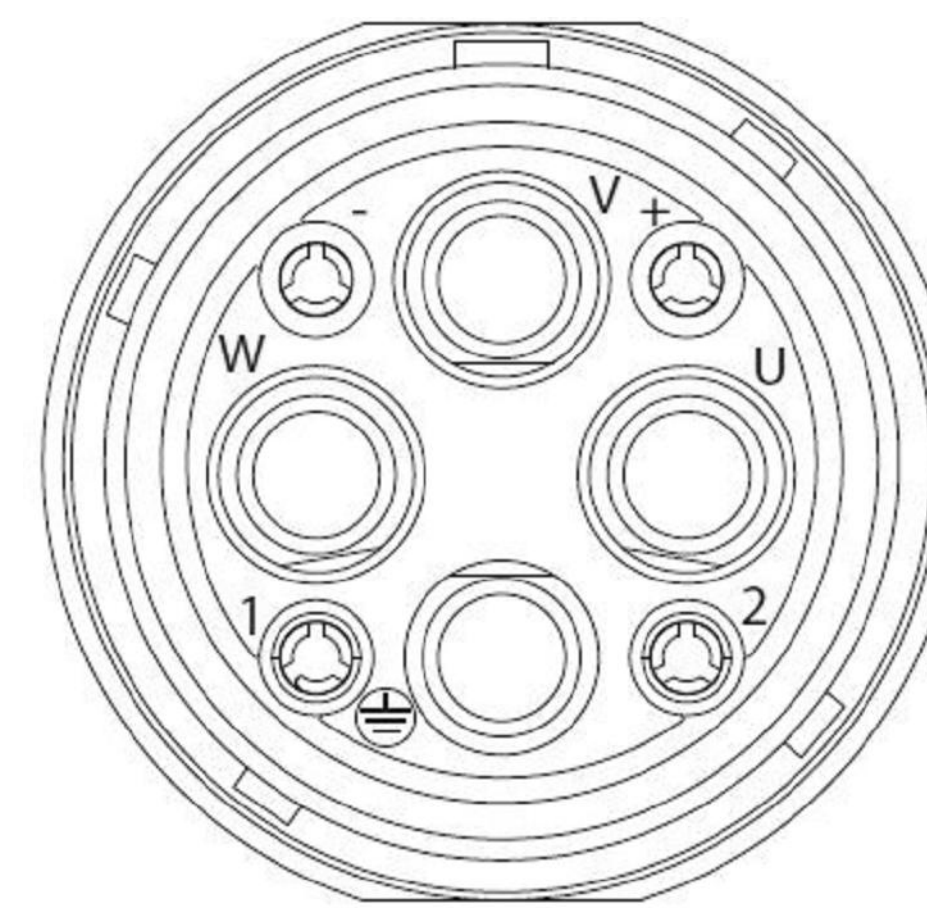
		MOTOR DIMENSIONS		
FRAME-STACKS	BRAKE OPTION	LD	LF	LE
300-4	2	448,2 [17.65]	408,2 [16.07]	400,2 [15.76]
	4	590,7 [23.26]	550,7 [21.68]	542,7 [21.37]

M23 FEEDBACK CONNECTOR PIN-OUTS (FIGURE #3)



21 BIT SINGLE-TURN FEEDBACK OPTION "S"		21 BIT MULTI-TURN FEEDBACK OPTION "M"		25 BIT MULTI-TURN FEEDBACK OPTION "Y"	
M623 FEEDBACK CONNECTOR		M623 FEEDBACK CONNECTOR		M623 FEEDBACK CONNECTOR	
PIN ID	FUNCTION	PIN ID	FUNCTION	PIN ID	FUNCTION
1	SIN +	1	SIN +	1-2	-
2	SIN -	2	SIN -	3	CLOCK +
3	COS +	3	COS +	4	CLOCK -
4	COS -	4	COS -	5	DATA +
5	DATA +	5	DATA +	6	DATA -
6	DATA -	6	DATA -	7-8	-
7-8	-	7-8	-	9	PWR 5V
9-10	-	9-10	-	10	ECOM
11	EPWR 9V	11	EPWR 9V	11-12	-
12	ECOM	12	ECOM	13	THERM +
13	THERM +	13	THERM +	14	THERM -
14	THERM -	14	THERM -	15-17	-
15-17	-	15-17	-		
APPLICABLE CATALOG STRINGS		APPLICABLE CATALOG STRINGS		APPLICABLE CATALOG STRINGS	
VPC-B3004A-Sx7xFx		VPC-B3004A-Mx7xFx		VPC-B3004A-Yx72Fx	
VPC-B3004D-Sx7xFx		VPC-B3004D-Mx7xFx		VPC-B3004D-Yx72Fx	

M58 POWER CONNECTOR PIN-OUTS (FIGURE #3)



NON-BRAKE MOTOR BRAKE OPTION "2"		BRAKE MOTOR BRAKE OPTION "4"	
M958 POWER CONNECTOR		M958 POWER CONNECTOR	
PIN ID	FUNCTION	PIN ID	FUNCTION
U	U	U	U
V	V	V	V
W	W	W	W
⊕	GND	⊕	GND
+	-	+	MBRK +
-	-	-	MBRK -
1	-	1	-
2	-	2	-
APPLICABLE CATALOG STRINGS		APPLICABLE CATALOG STRINGS	
VPC-B3004A-Sx72Fx		VPC-B3004A-Sx74Fx	
VPC-B3004A-Yx72Fx		VPC-B3004A-Mx74Fx	
VPC-B3004A-Mx72Fx		VPC-B3004D-Sx74Fx	
VPC-B3004D-Sx72Fx		VPC-B3004D-Mx74Fx	
VPC-B3004D-Yx72Fx			
VPC-B3004D-Mx72Fx			

UNLESS OTHERWISE SPECIFIED  
DO NOT SCALE DRAWING  
DIMENSIONS ARE IN  
MILLIMETERS WITH  
INCHES REFERENCED (X1)  
DIMENSIONS ARE  
REFERENCE  
3RD ANGLE PROJECTION



VPC, F300, ESM

DESCRIPTION  
CREATED BY: JMEREDIG  
CHANGED BY: VTHIMMA

CONFIDENTIAL AND PROPRIETARY INFORMATION  
THIS DOCUMENT CONTAINS CONFIDENTIAL AND PROPRIETARY  
INFORMATION OF ROCKWELL AUTOMATION, INC. AND MAY  
NOT BE USED, COPIED OR DISCLOSED TO OTHERS, EXCEPT  
WITH THE AUTHORIZED WRITTEN PERMISSION OF ROCKWELL  
AUTOMATION, INC.

DATE: 11-20-2019 SHEET 5 OF 5  
SIZE: D1R VER:  
D 10002434953 04