

FRAME-STACKS	BRAKE OPTION	MOTOR DIMENSIONS		CATALOG STRING	APPROX MOTOR BODY WEIGHT KG [LBS]
		L	LC		
100-1	2	183,0 [7.2]	110,8 [4.36]	VPH-x1001x-xxx2xxx	8.7 [19.2]
	4	215,1 [8.47]	142,9 [5.63]	VPH-x1001x-xxx4xxx	10.7 [23.6]
100-3	2	233,8 [9.2]	161,6 [6.36]	VPH-x1003x-xxx2xxx	12.3 [27.1]
	4	265,9 [10.47]	193,7 [7.63]	VPH-x1003x-xxx4xxx	14.1 [31.1]

CABLE LENGTH OPTION	CABLE TYPE	CABLE LENGTH DIMENSION C	CATALOG STRING	APPROX CABLE WEIGHT
				KG [LBS]
01	FLEX	1000 [39.37] (1 METER)	VPH-x100xx-xx0xx01	0.4 [0.9]
			VPH-x100xx-xx1xx01	0.5 [1.1]
03	FLEX	3000 [118.11] (3 METERS)	VPH-x100xx-xx0xx03	1.2 [2.6]
			VPH-x100xx-xx1xx03	1.5 [3.3]
05	FLEX	5000 [196.85] (5 METERS)	VPH-x100xx-xx0xx05	1.6 [3.4]
			VPH-x100xx-xx1xx05	2.5 [5.5]
07	FLEX	7000 [275.59] (7 METERS)	VPH-x100xx-xx0xx07	2.7 [6.0]
			VPH-x100xx-xx1xx07	3.5 [7.7]
09	STANDARD	9000 [354.33] (9 METERS)	VPH-x100xx-xx0xx09	3.5 [7.7]
			VPH-x100xx-xx1xx09	4.7 [10.3]
12	STANDARD	12000 [472.44] (12 METERS)	VPH-x100xx-xx0xx12	4.7 [10.2]
			VPH-x100xx-xx1xx12	5.6 [12.3]
15	STANDARD	15000 [590.55] (15 METERS)	VPH-x100xx-xx0xx15	5.8 [12.8]
			VPH-x100xx-xx1xx15	6.7 [14.8]

- NOTES:
- DXF OF THIS DRAWING MUST BE SCALED TO LENGTH. SEE MOTOR DIMENSIONS CHART.
 - 3D STEP (.stp) FILES ARE AVAILABLE FOR ALL MOTOR CONFIGURATIONS.
 - FOR ADDITIONAL SPECIFICATIONS SEE ESE DRAWING DIR 10004356352.
 - APPROX TOTAL MOTOR WEIGHT EQUALS MOTOR BODY WEIGHT PLUS CABLE WEIGHT (SEE CHARTS).
 - MOTOR OUTER BODY MATERIAL: 316 STAINLESS STEEL
 - VPH CATALOG STRING CODE:

BRAKE: 2 = NO BRAKE, 4 = BRAKE
 CONNECTOR: 0 = FLYING LEADS, 1 = SINGLE SPEEDTEC DIN CONNECTOR
 CABLE LENGTH: SEE CHART

TYPE OF BEND RADIUS	TYPE OF CABLE	MINIMUM BEND RADIUS
STATIC BEND RADIUS	STANDARD	119 [4.7]
	FLEX	
CONTINUOUS BEND RADIUS	FLEX	170 [6.7]

UNLESS OTHERWISE SPECIFIED
 DO NOT SCALE DRAWING DIMENSIONS ARE IN MILLIMETERS WITH INCHES REFERENCED (X) UNLESS OTHERWISE REFERENCED DIMENSIONS ARE IN INCHES
 3RD ANGLE PROJECTION

Rockwell Automation

VPH, F100, ESM

CONFIDENTIAL AND PROPRIETARY INFORMATION THIS DOCUMENT CONTAINS CONFIDENTIAL AND PROPRIETARY INFORMATION OF ROCKWELL AUTOMATION, INC. AND MAY NOT BE USED, COPIED OR DISCLOSED TO OTHERS, EXCEPT WITH THE AUTHORIZED WRITTEN PERMISSION OF ROCKWELL AUTOMATION, INC.

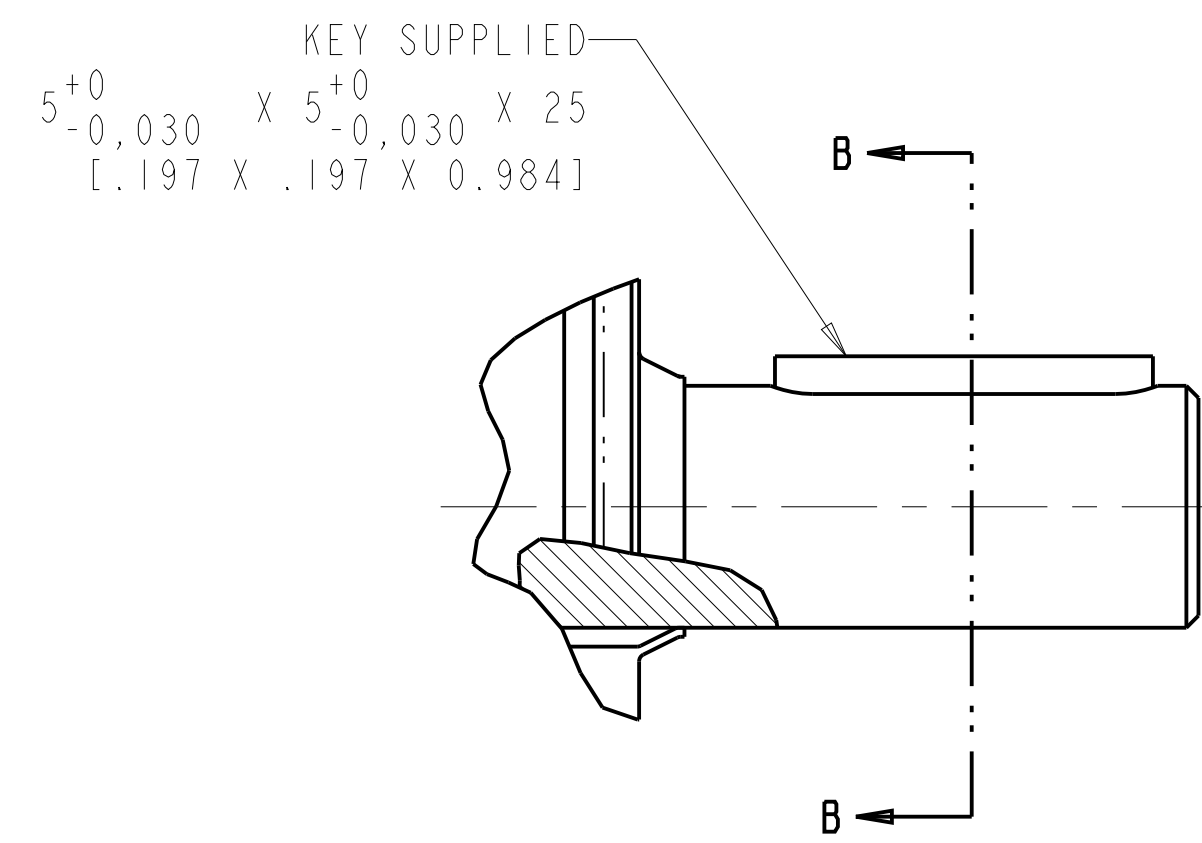
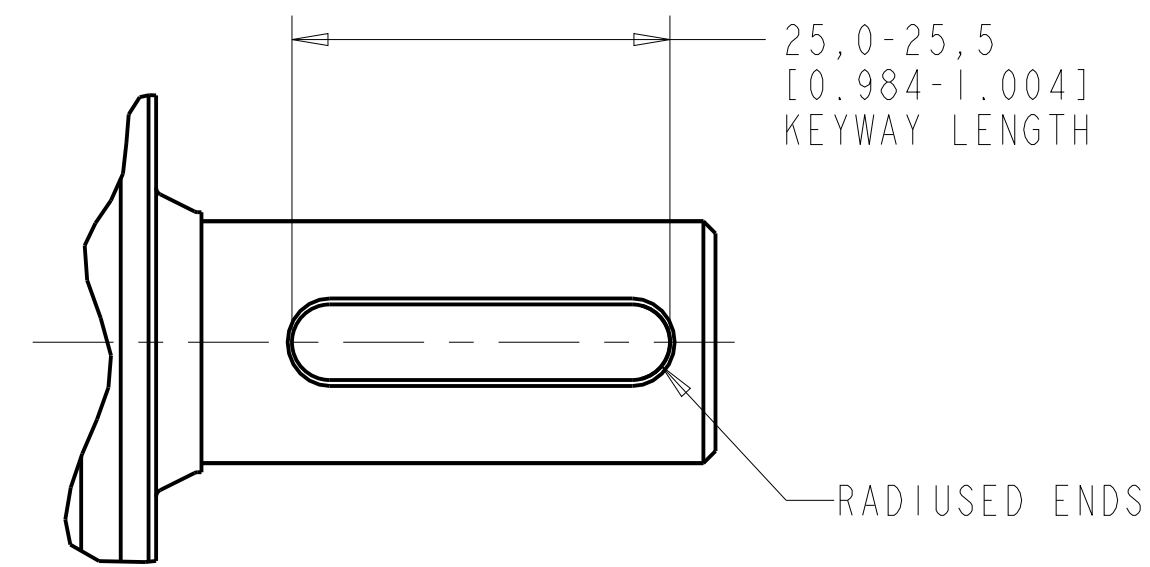
SHEET 1 OF 2

SIZE D1R D
 10003678011

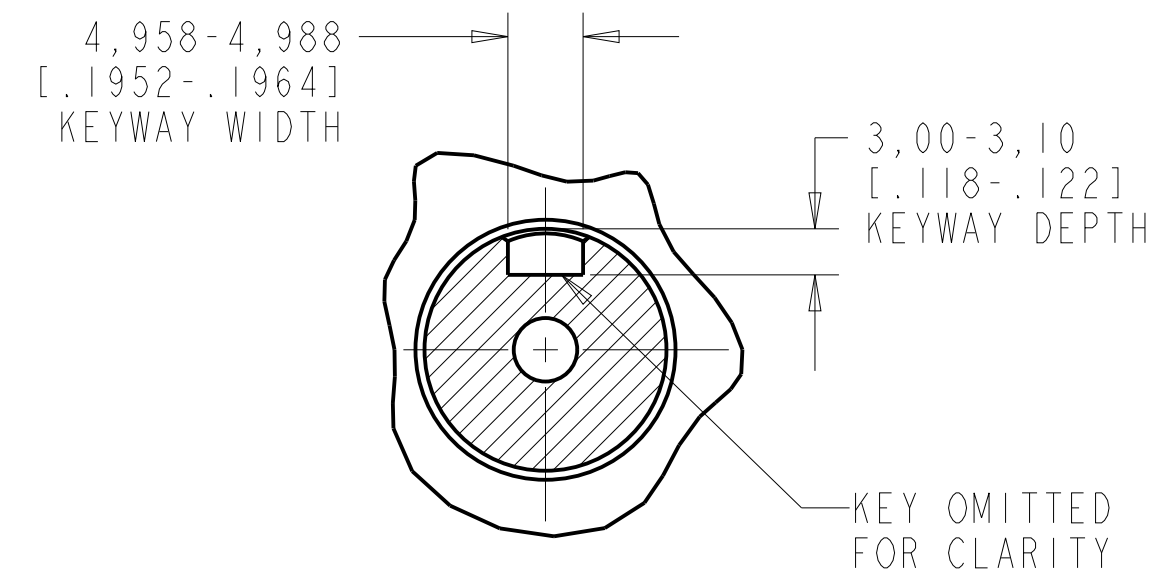
VER 01

DRAWN BY: SRGADDAM DATE: FEB-21-2019

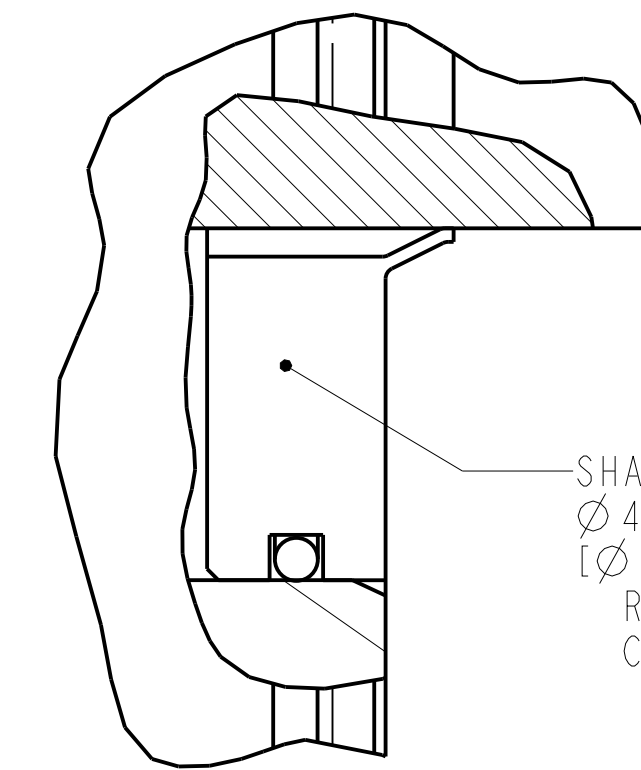
1 2 3 4 5 6 7 8



DETAIL B
SH 1, ZONE D6
SCALE 2.000



SECTION B-B



SHAFT SEAL
Ø47 X Ø16 X 7.9
[Ø1.850 X Ø.630 X .31]
REFERENCE REPLACEMENT SHAFT SEAL KIT
CATALOG NUMBER: VPH-SST-F100

DETAIL A
SH 1, ZONE E5
SCALE 3.000

CONNECTOR OPTION "0"		
FLYING LEADS		
WIRE COLOR	AWG	FUNCTION
BROWN	14	U
BLACK	14	V
BLUE	14	W
GREEN/YELLOW	14	GND
BLUE	22	DSL +
BLACK	18	MBRK +
WHITE	18	MBRK -
WHITE/BLUE	22	DSL -
-	-	-
APPLICABLE CATALOG STRINGS		
VPH-x165xx-xx0xxxx		

CONNECTOR OPTION "1"	
M923 EXTENSION CONNECTOR	
PIN ID	FUNCTION
A	U
B	V
C	W
⊕	GND
E	DSL +
F	MBRK +
G	MBRK -
H	DSL -
L	-
APPLICABLE CATALOG STRINGS	
VPH-x165xx-xx1xxxx	

